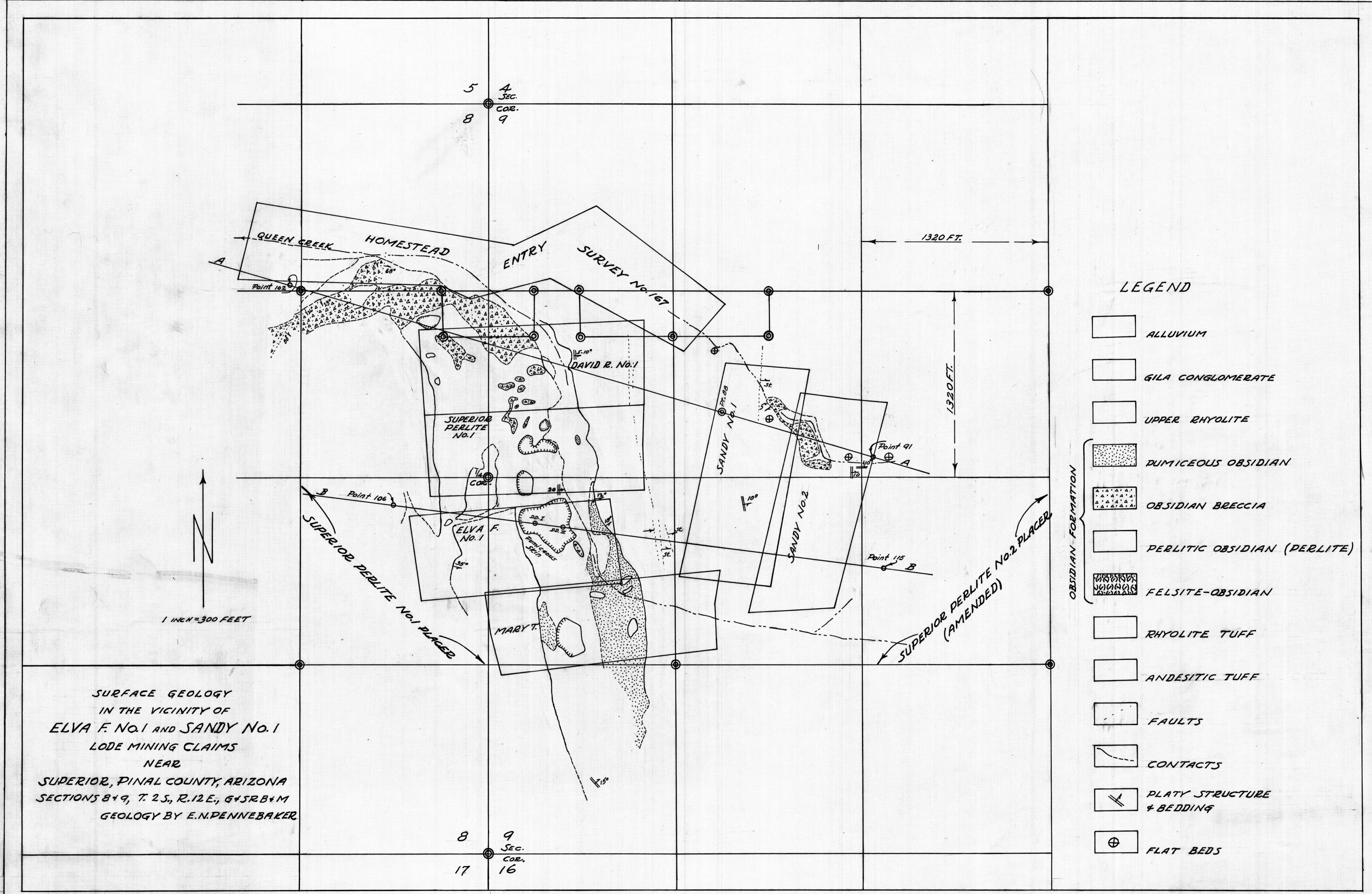


TRIM TO HERE



SURFACE GEOLOGY
 IN THE VICINITY OF
 ELVA F. NO. 1 AND SANDY NO. 1
 LODGE MINING CLAIMS
 NEAR
 SUPERIOR, PINAL COUNTY, ARIZONA
 SECTIONS 8 & 9, T. 2S., R. 12E., G+SRB+M
 GEOLOGY BY E.N. PENNEBAKER

- LEGEND
- ALLUVIUM
 - GILA CONGLOMERATE
 - UPPER RHYOLITE
 - DUMICEOUS OBSIDIAN
 - OBSIDIAN BRECCIA
 - PERLITIC OBSIDIAN (PERLITE)
 - FELSITE-OBSIDIAN
 - RHYOLITE TUFF
 - ANDESITIC TUFF
 - FAULTS
 - CONTACTS
 - PLATY STRUCTURE & BEDDING
 - FLAT BEDS
- OBSIDIAN FORMATION

TRIM TO HERE