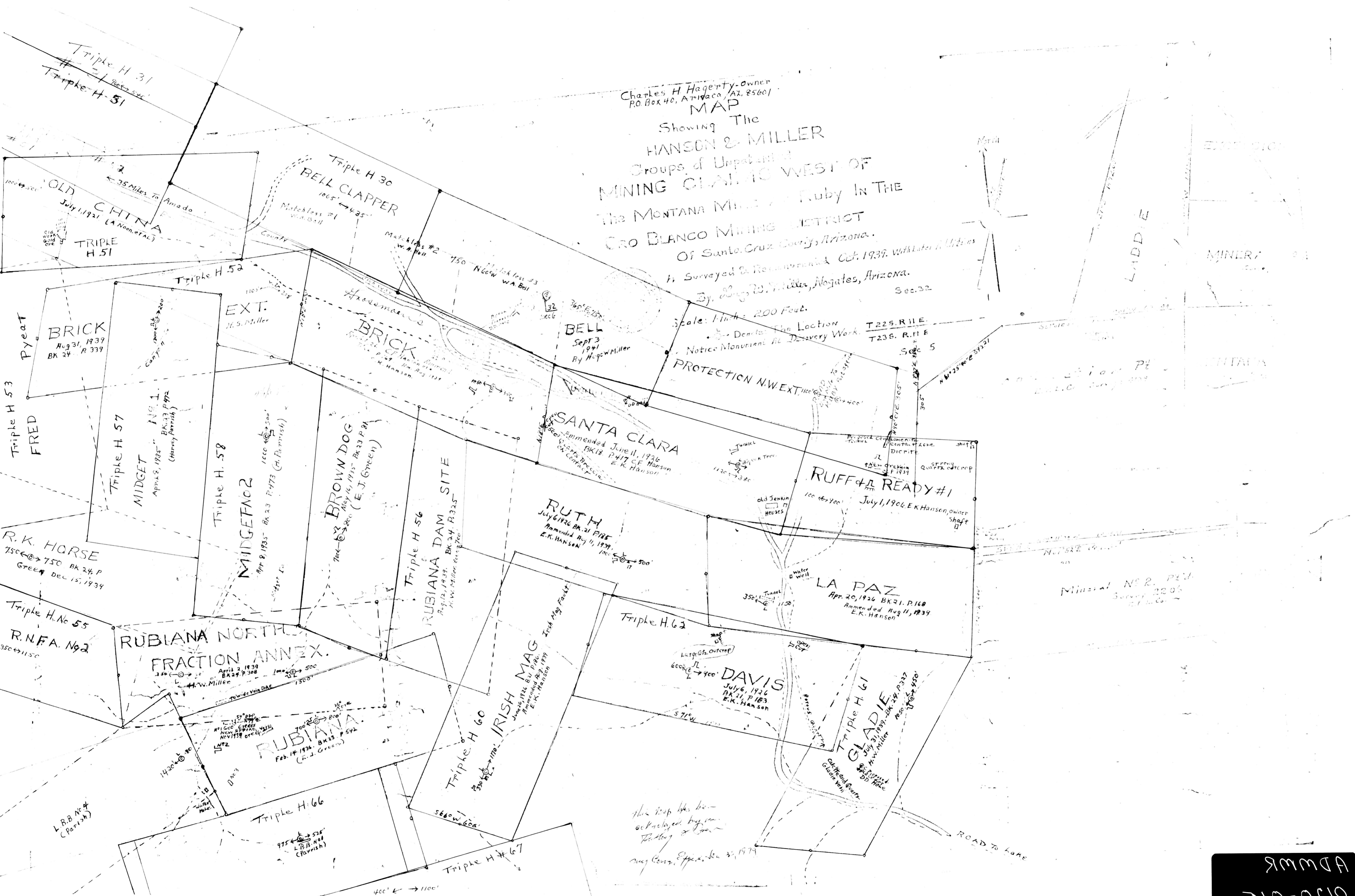


Charles H. Hagerty, owner
P.O. Box 40, Nogales, AZ, 85601

MAP Showing The HANSON & MILLER Groups of Unpatented MINING CLAIMS WEST OF The MONTANA Mine & Ruby In The CRO BLANCO Mining District Of Santa Cruz County, Arizona.

As Surveyed & Re-recorded Oct. 1939. With Later Activities
By, S. W. Miller, Nogales, Arizona. Sec. 32

Scale: 1 Inch = 200 Feet.
Denotes The Location
Notice Monument At Discovery Work.



This map has been
rechecked by me
S. W. Miller
my Cont. Exp. Jan 30, 1974

ADWR
0150-012