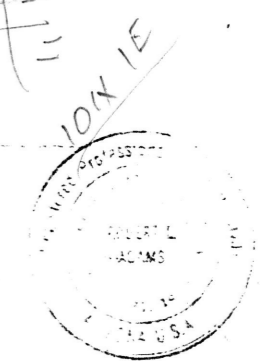
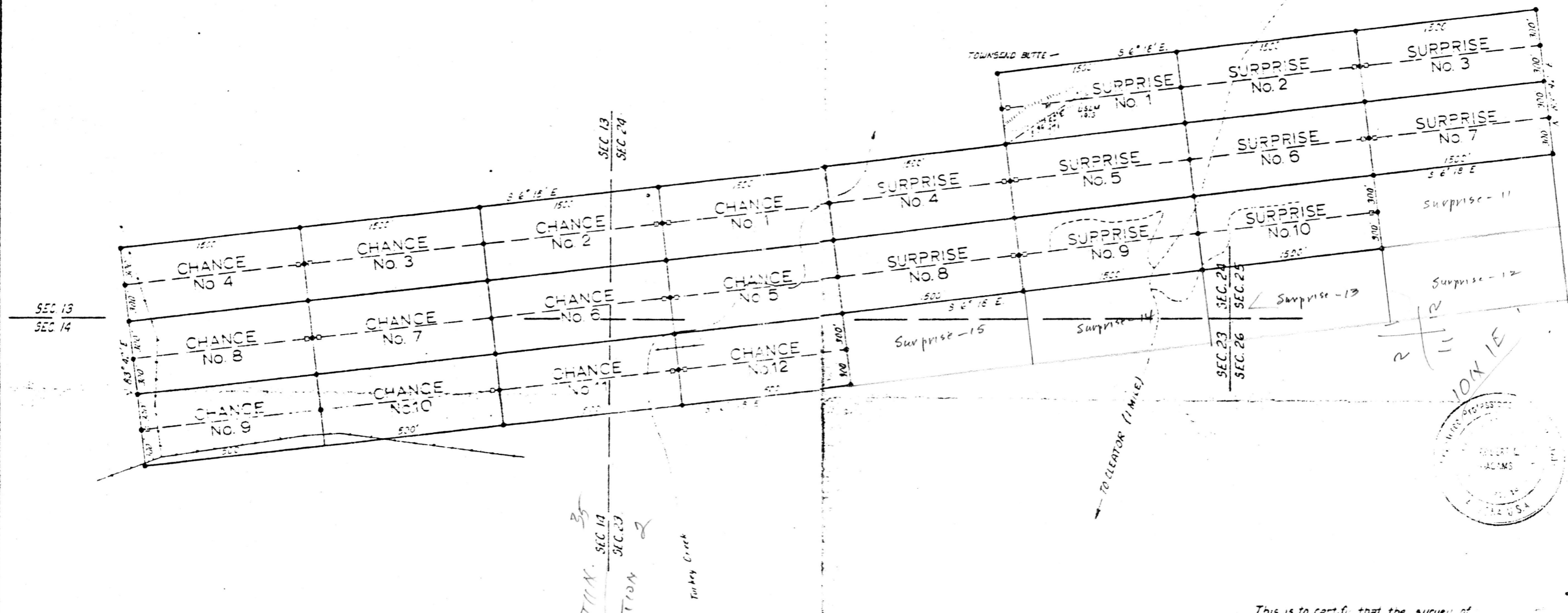
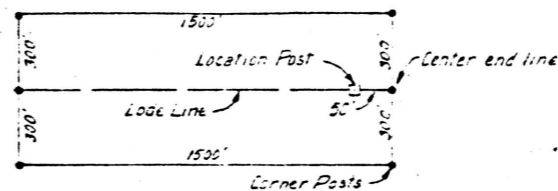


NOTES.

1. Claim corners and location monuments are 2" x 5" wood posts painted white
2. Basis of bearing is solar observation dated 11-9-74.
3. All location monuments are 50' from center end lines
4. Claim corners and center end lines
 - Location monuments
5. USLM is a US Location Monument 19.3 and marked by a cross and stone cairn 5' high on the South edge of Townsend Butte.
6. Section Lines are approximate and were obtained from the Pine Grove Mining District plat with protracted sections

Typical Lode Claim



This is to certify that the survey of the premises described and plotted here on were made under my direction during the month of November, 1974

Registered CE #4749
LS #7907

MINING CLAIM SURVEY
OF THE
CHANGE & SURPRISE GROUP OF CLAIMS
FOR
CHARLES E. GOETZ

SITUATED IN PORTIONS OF
UNSURVEYED SECTIONS 13, 14, 23, 24 & 25
T.11N. R.1E S&SRB&M.

YAVAPAI COUNTY ARIZONA
PECK MINING DISTRICT

D. K. MARTIN & ASSOC.
315 W. MONTEROSA
PHOENIX, ARIZONA 85013

| | |
|-----------------|---|
| Surveyed By: | ABCO Engineering Inc. 7534 No 46 Circle Glendale Az 85301 |
| SCALE 1" = 600' | APPROVED BY: |
| DATE 11 14 74 | DRAWN BY R.K.T. |
| | REVISED |

ADMMR 0106-010