

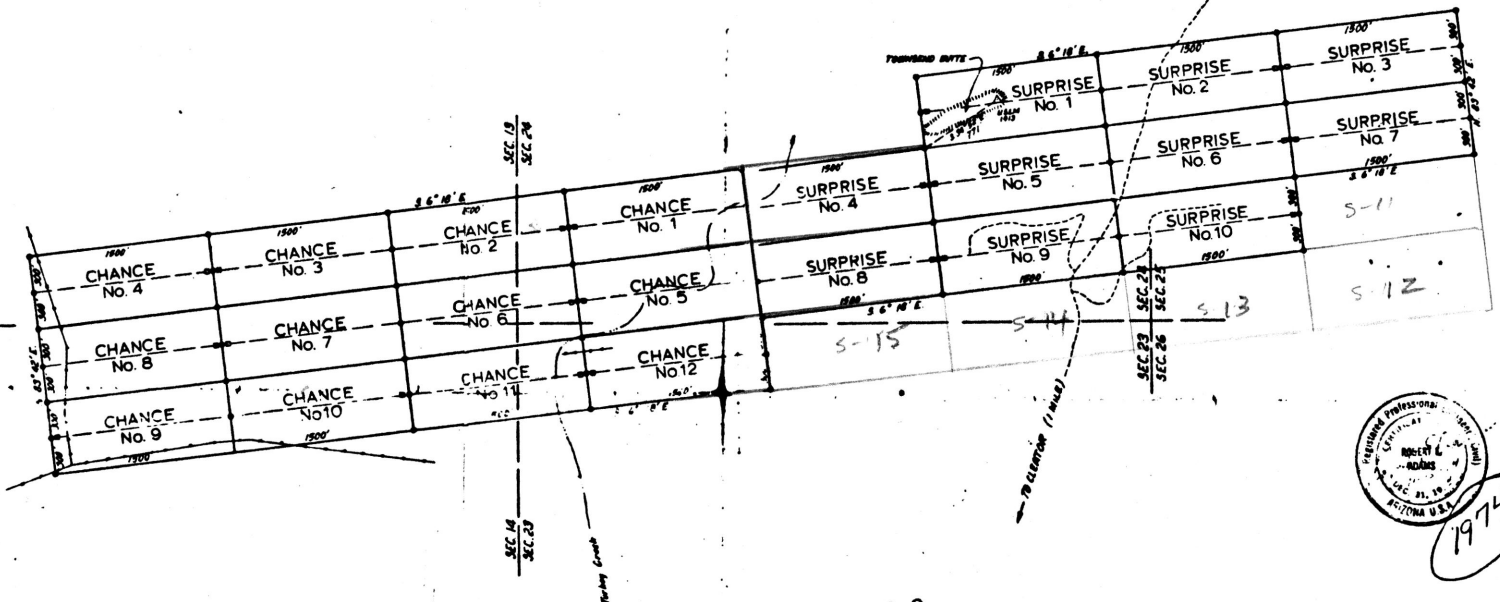
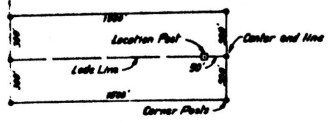
*Check corners
5-12-74*

center 7 1/2 Quad

NOTES:

1. All claim corners and location monuments are 2"x2"x5' wood posts painted white.
2. Basis of bearing is solar observation dated 11-9-74.
3. All location monuments are 50' from center end lines.
4. Claim corners and center end lines
 - Location monuments
5. USLM is a U.S. Location Monument 1913 and marked by a cross and stone corner 5' high on the South edge of Townsend Butte.
6. Section Lines are approximate and were obtained from the Pine Growth Mining District plat with protracted sections.

Typical Lode Claim



MAP
MINING CLAIM SURVEY
OF THE
CHANCE & SURPRISE GROUP OF CLAIMS

This is to certify that the survey of the premises described and plotted here on were made under my direction during the month of November, 1974.

Robert L. Adams
Registered CE #4789
L.S. #7907

SITUATED IN PORTIONS OF
UNSURVEYED SECTION 5 13,14,23,24 & 25
T.11N. R.1E G&SR.B&M.

YAVAPAI COUNTY ARIZONA
PECK MINING DISTRICT

D. K. MARTIN & ASSOC.
315 W. MONTEROSA
PHOENIX, ARIZONA 85013

Surveyed By: ABCO Engineering Inc. 7534 No 44 Circle Glendale Az 85301		Drawn by: R.K.T.
Scale: 1" = 600'	Approved by:	Revised:
Date: 11-18-74		
		Drawing Number: 73

ADMMR 0106-010