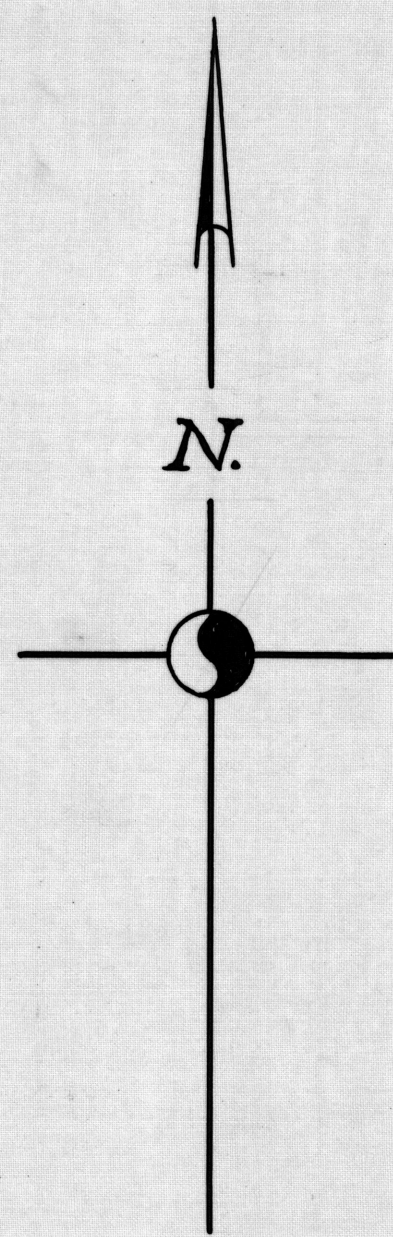
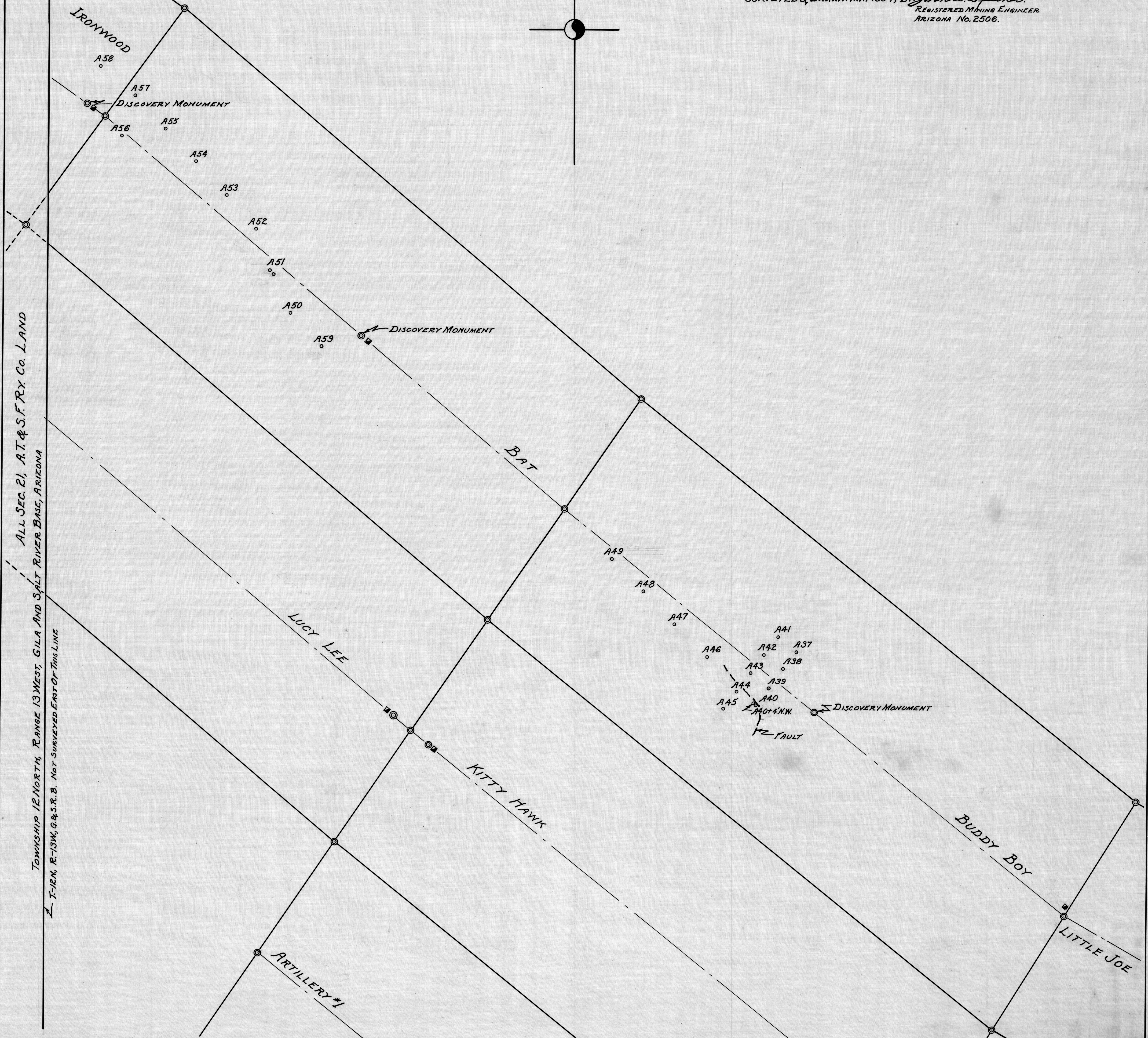


16 15
21 22



JAQUAYS MINING CORP.
1219 SOUTH 19TH AVE., PHOENIX, ARIZONA
MAP SHOWING
LOCATION OF DRILL HOLES ON IRONWOOD, BAT AND BUDDY BOY CLAIMS
ARTILLERY PEAK DISTRICT, MOHAVE COUNTY, ARIZONA
SCALE: 1 IN. = 100 FT.
SURVEYED & DRAWN: MAY 1957; BY: *John L. Spitzer*
REGISTERED MINING ENGINEER
ARIZONA No. 2506.



ALL SEC. 21, A.T. & S.F. RY. CO. LAND
TOWNSHIP 12 NORTH, RANGE 13 WEST, GILA AND SALT RIVER BASE, ARIZONA
T-12N, R-13W, G&S.R.B. NOT SURVEYED EAST OF THIS LINE

ADMMR 103-003

Jaquays Mining Corp Plat 3
Scanned 4/08