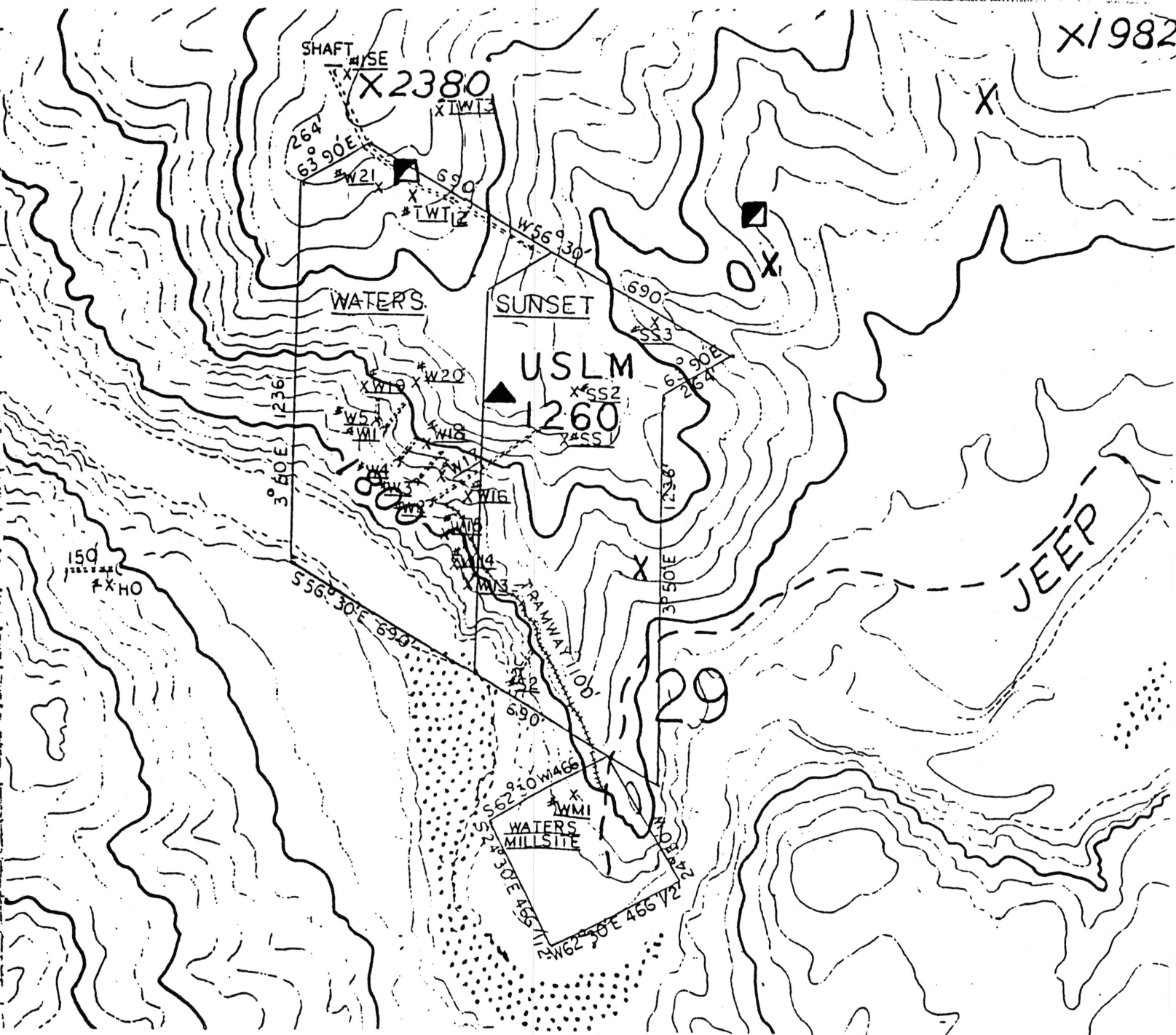


REF	DESCRIP.	OZ/AU	TON	OZ/TON	TON
2-13		OZ/AU	TON	OZ/TON	TON
14	WM 1	.018	NIL.		
20	S 2	.092	NIL.		
17	SS 1	1.116	1.09		
18	SS 2	.332	.05		
19	SS 3	.140	.46		
16	TWT 3	.016	NIL.		
13	I I SE	.424	.16		
15	TWT 12	.018	NIL.		
P-11	W 13	.011	—		
P-2	W 14	.018	—		
P-3	W 15	.058	—		
P-5	W 16	.168	—		
P-4	W 2	.5538	—		
P-7	W 3	.582	—		
P-9	W 4	1.89	—		
P-11	W 5	.163	—		
P-6	W 17	.236	—		
P-8	W 18	.010	—		
P-12	W 19	.099	—		
P-13	W 20	.296	—		
P-14	W 21	.683	—		
	HO	.224	.18		
ALL SAMPLES-CHANNEL CUT					
BY LEWIS TOWNSEND AND					
DAVID LAXTON AV. 5 FEET					
ALL ASSAYS FIRE METHOD					
BY WALT STATLER P.O. BOX					
247 HUMBOLT AZ. 86329					
AVERAGE SAMPLE 333					



ADMMR0094-009