

T. 2 S., R. 12 E., G. & S. R. M.

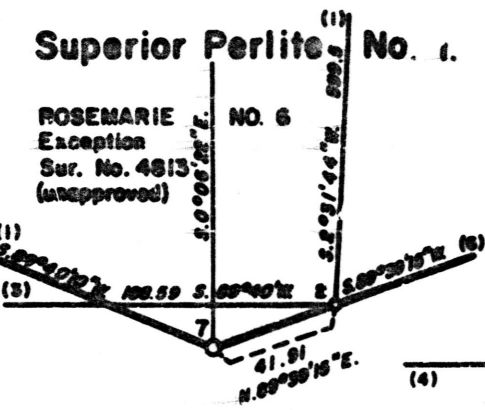
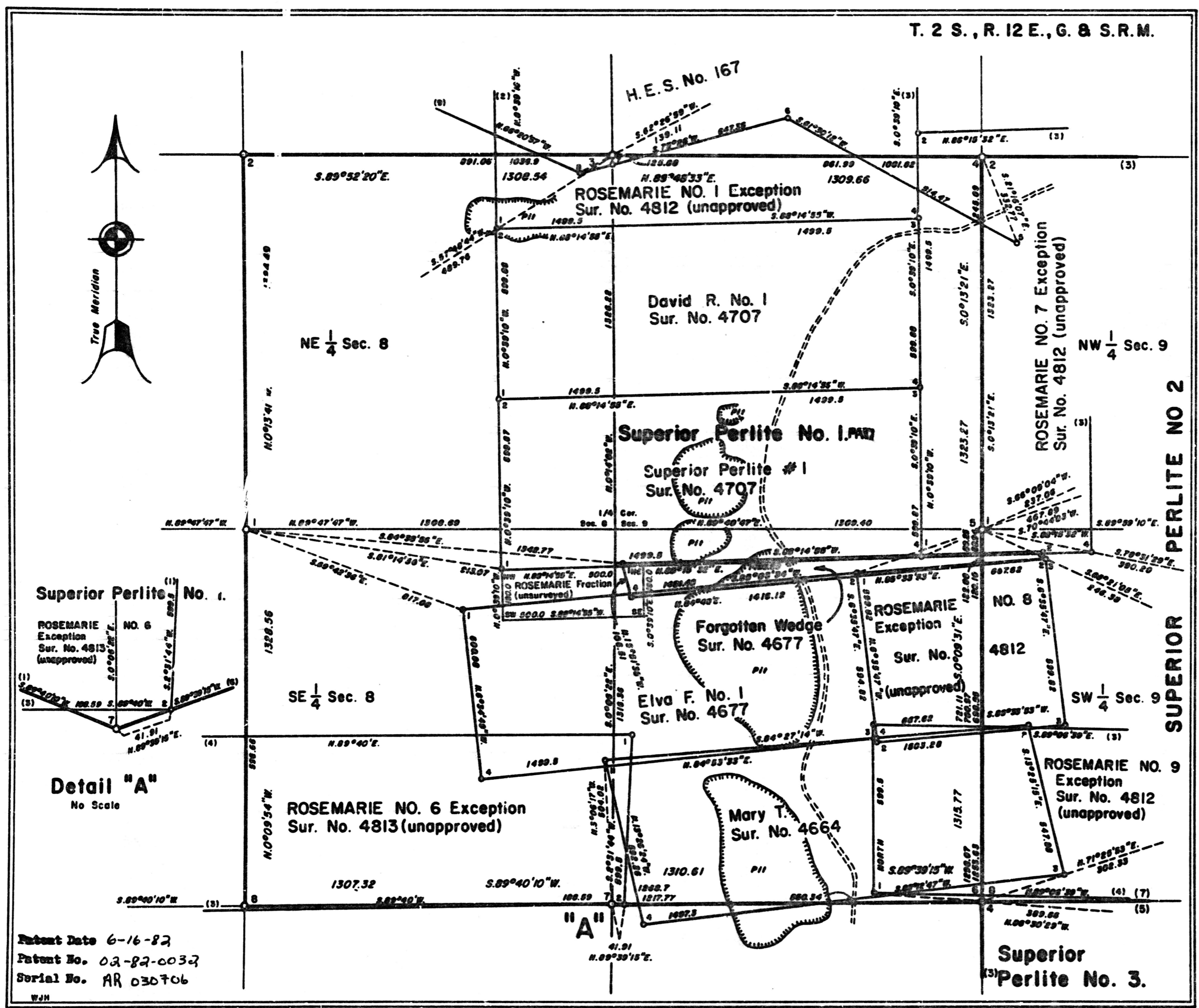
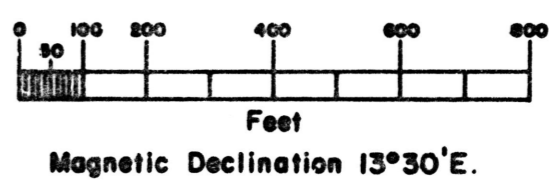
Sheet 1 of 3

MINERAL SURVEY No. 4810-Am. ARIZONA

CLAIM OF
HARBORLITE CORPORATION

KNOWN AS THE
Superior Perlite No. 1, SUPERIOR
PERLITE NO 2 & Superior Perlite
No. 3 PLACERS

SITUATE IN
Sec. 8 & 9, T. 2 S., R. 12 E., G. & S. R. M.
Pinal County
Pioneer Mining District
Arizona Land District
Lat. 33°16'16"N., Long. 111°08'51"W., at Cor.
No. 3, Superior Perlite No. 1 Placer



Patent Date 6-16-82
Patent No. 02-82-0032
Serial No. AR 030706

ADMMR0093-005