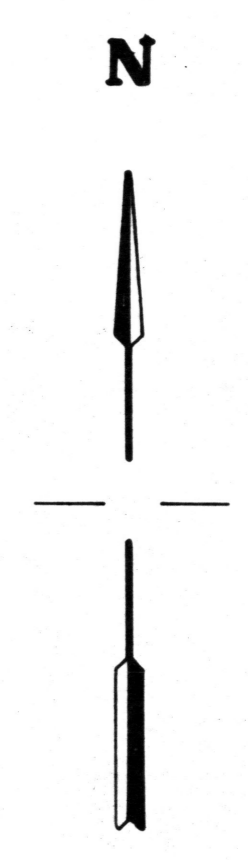


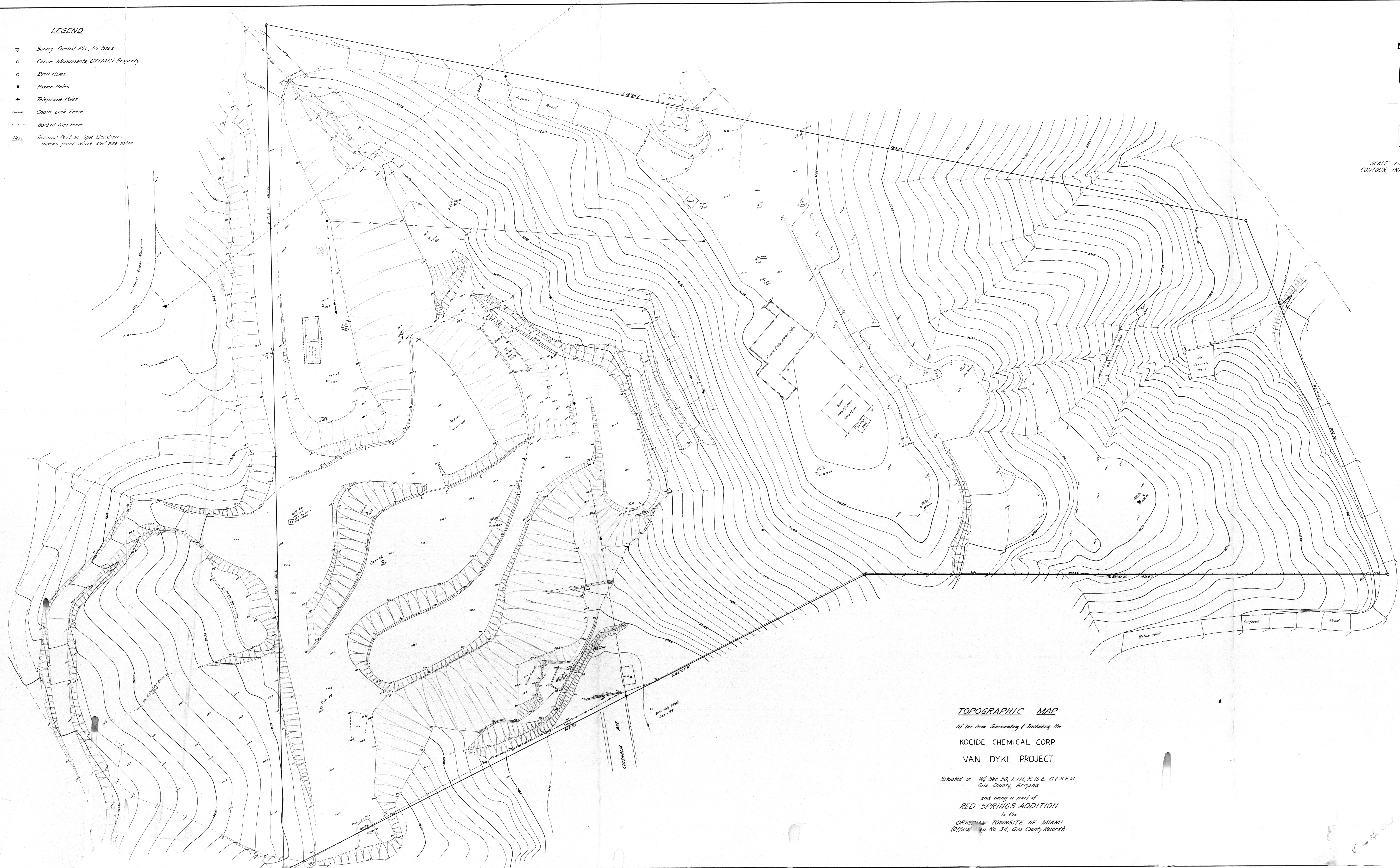
ADMMR0089-001

LEGEND

- ▽ Survey Control Pts. Tri Stas
 - Corner Monuments OXYMIN Property
 - Drill Holes
 - Power Poles
 - Telephone Poles
 - Chain-Link Fence
 - Barbed Wire Fence
- NOTE: Decimal Point on Spot Elevations marks point where shot was taken.*



SCALE 1" = 20' ft
 CONTOUR INTERVAL = 5' ft



TOPOGRAPHIC MAP

Of the Area Surrounding & Including the
 KOCIDE CHEMICAL CORP.
 VAN DYKE PROJECT

Situated in W¹/₂ Sec 30, T.1N., R.15E., G.1 S.R.M.,
 Gila County, Arizona
 and being a part of
 RED SPRINGS ADDITION
 to the
 ORIGINAL TOWNSITE OF MIAMI
 (Official Map No. 34, Gila County Records)

OCCIDENTAL MINERALS CORP.	
Prepared by	Clyde Crockett
Checked by	J. D. Berger
Drawn by	W. J. Gandy
GANDY & ASSOCIATES	
ENGINEERS & SURVEYORS	
PHOENIX, ARIZONA	
78000	

ADMMR0089-001