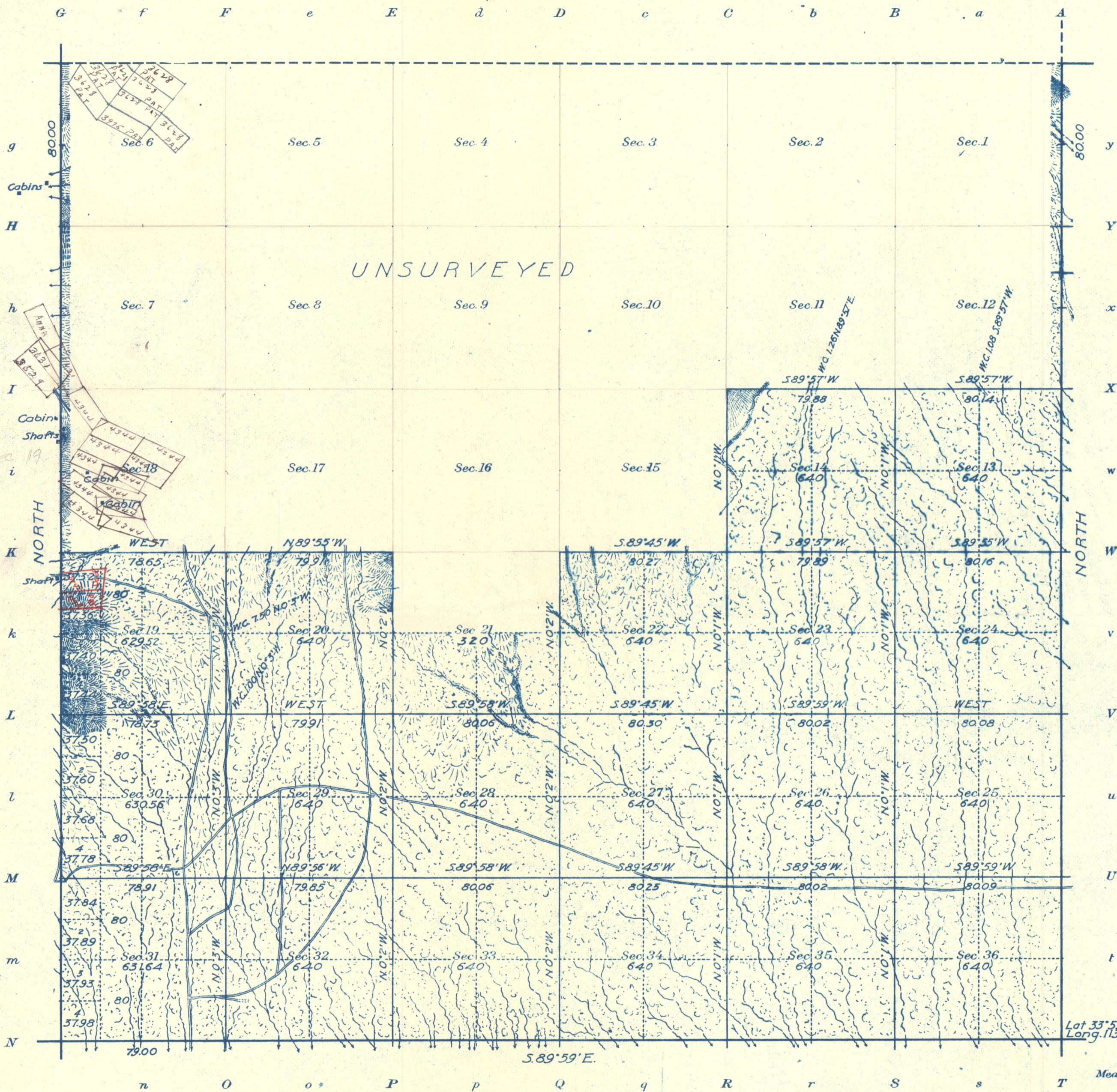


Township N^o 7 North Range N^o 12 West Gila and Salt River Meridian, Arizona.



Areas in Acres	
Public Land	12,451.72
Indian Reservation	
Indian Allotments	
Mineral Claims	
Water Surface	
Total Area	12,451.72

Lot 33° 53' 53" N
 Long. 113° 27' 09" W
 Scale 40 Chains to an inch
 Mean Magnetic Declination 14° 30' E

Surveys Designated	By Whom Surveyed	Group		Amount of Surveys			When Surveyed	
		No.	Date of Instructions	Mls.	chs.	lks.	Begun	Completed
Subdivisions	W. K. Kierulpp	34	Feb. 11, 1914	As shown			May 13	21, 1914.
E. T. Line	" " "	"	" " "	Complete			April 29,	"
W. " "	W. H. Thorn	"	" " "	"			May 18-19,	"
S. " "	John F. Hesse	938	Oct. 10, 1908.	"			December 20,	1908.

The above map of Township No. 7 North Range No. 12 West of the Gila and Salt River Meridian, Arizona is strictly conformable to the field notes of the survey thereof on file in this office, which have been examined and approved
 U. S. Surveyor General's Office.
 Phoenix, Arizona, Dec. 30, 1915.

Frank Ingalls
 Surveyor General.

ADMMR0072-003