

RED BLUFF No. 5.

RED BLUFF No. 4.

RED BLUFF No. 1.

RED BLUFF No. 3.

RED BLUFF MILLSITE No. 1.

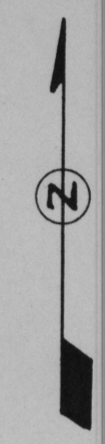
RED BLUFF MILLSITE No. 2.

RED BLUFF No. 2.

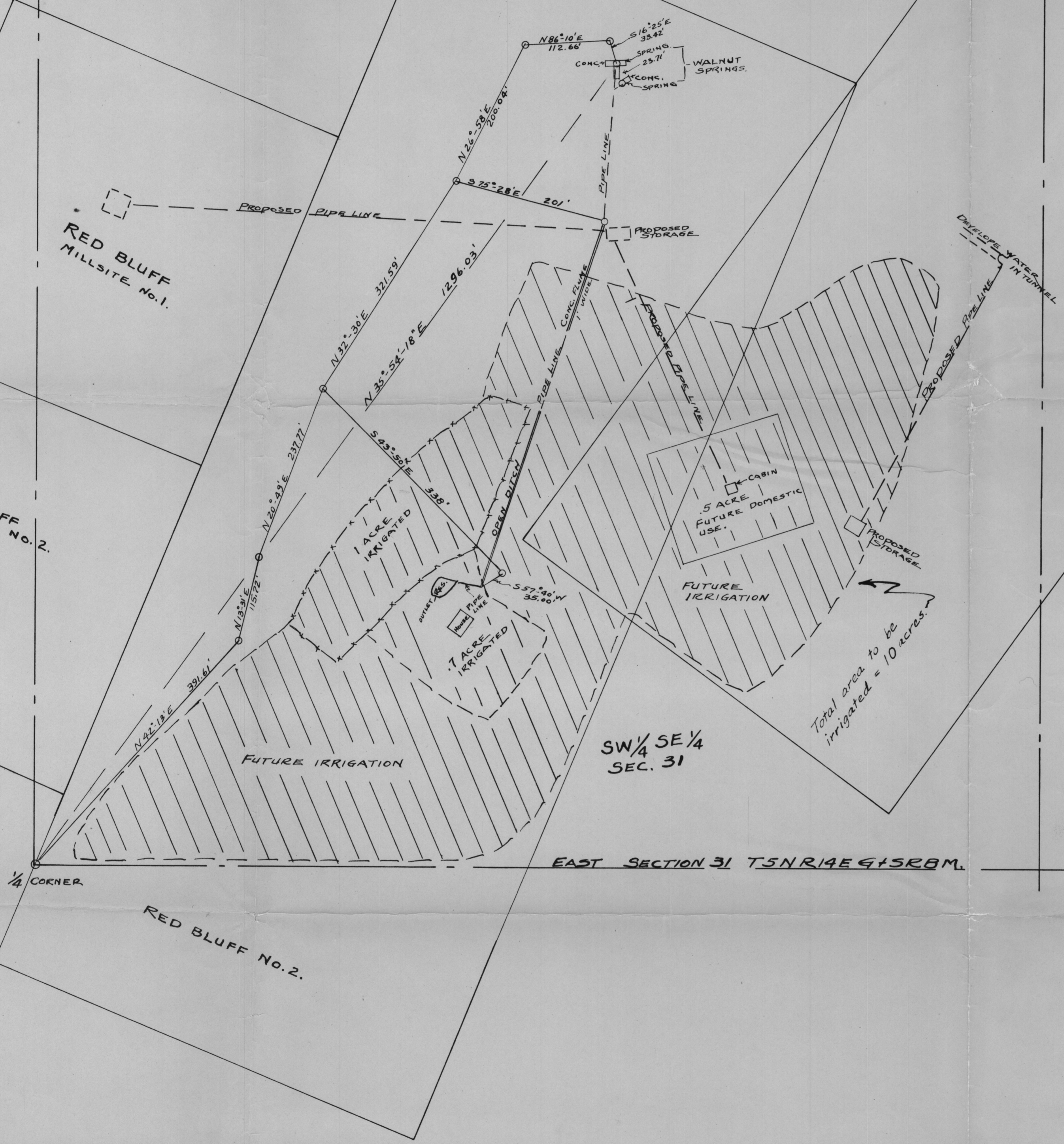
SW 1/4 SE 1/4 SEC. 31

SE 1/4 SE 1/4 SEC. 31

EAST SECTION 31 T5N R14E G1S RBMA.



31 32
6 5



I hereby certify that this map was made from notes of a survey made by me and under my direction in April 1950, and that such survey is accurately represented on this map.
K. W. Hammes
REGISTERED ENGINEER # 1038



MAP OF THE
WALNUT SPRINGS
T5N R14E G1S RBMA
GILA COUNTY, ARIZ.
ETHEL SCHELL LARSEN
APPLICANT

Scale 1" = 100' Date: 4/26/50

ADM MR 0067-001