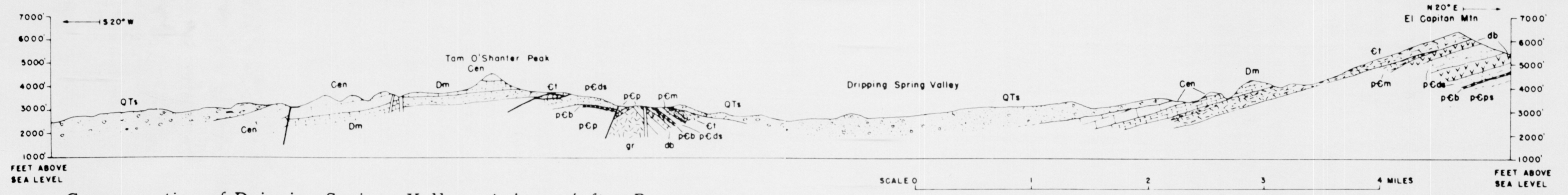
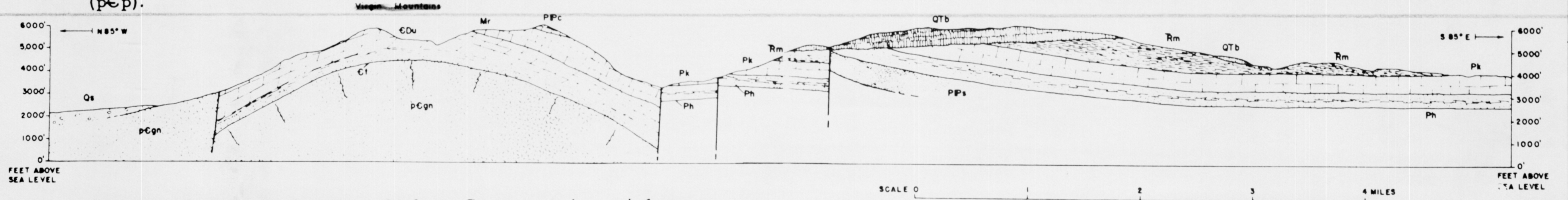


Cross section in Bisbee district, Arizona (after Ransome, 1904). Valley fill (Qs); Cretaceous Bisbee group (Kb); Pennsylvanian Naco limestone (Cn); Mississippian Escabrosa limestone (Ce); Devonian Martin limestone (Dm); Cambrian Abrigo limestone (Ca).



Cross section of Dripping Springs Valley, Arizona (after Ransome, 1923). Valley fill (Qts); Carboniferous Naco and Escabrosa limestones (Cen); Devonian Martin limestone (Dm); Cambrian Troy quartzite (Ct); diabase (db); younger Precambrian Apache group -- Mescal limestone (pCm), Dripping Spring quartzite (pCds), Barnes conglomerate (pCb); granite (gr); older Precambrian Pinal schist (pCp).



Cross section in northwestern Mohave County, Arizona (after Moore, 1958). Valley fill (Qs); basalt (Qtb); Triassic Moenkopi formation (TRm); Permian Kaibab formation (Pk); Permian Hermit shale (Ph); Permian and Pennsylvanian Supai formation (IPPs) and Callville limestone (IPPc); Mississippian Redwall limestone (Mr); Cambrian and Devonian limestone and dolomite (EDu); Cambrian Tonto group (Ct); older Precambrian granite and gneiss (pCgn).

ADMMR  
0016-013

FIGURE 16. Left half of cross sections of the Bisbee district, Dripping Springs Right half of cross sections in the Bisbee district, Dripping Springs