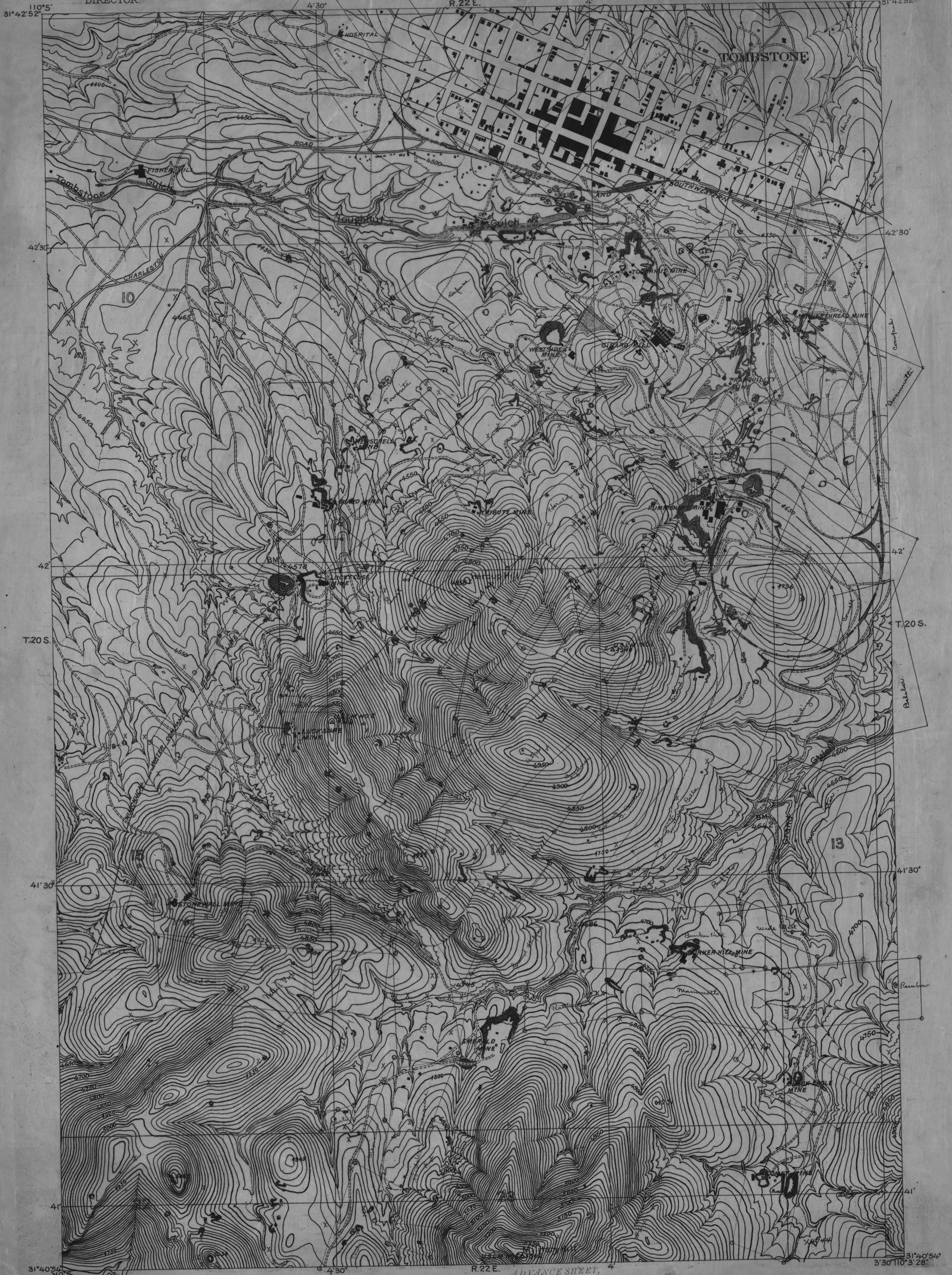


U.S. GEOLOGICAL SURVEY
GEORGE OTIS SMITH
DIRECTOR

ARIZONA
(COCHISE COUNTY)
TOMBSTONE SPECIAL MAP
83° 11' 32.8" W
31° 42' 52" N



E.M. Douglas, Geographer, in charge
Topography by E.R. Bartlett
Trangulation by T.M. Bannon
Surveyed in 1907

128
TRUE NORTH
MAGNETIC NORTH
APPROXIMATE MEAN
DECLINATION 1907

Scale 5000
500 0 500 1000 1500 2000 2500 Feet
Kilometer

Contour interval 10 feet.
Datum is mean sea level.

ADVANCE SHEET,
Subject to correction.

MICROFILMED DEC 3 '81

ADMMR 0016-021