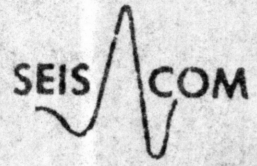


AJO
LINE B



LOUISIANA LAND & EXPLORATION COMPANY		
AREA AJO	LOCATION PIMA CO., ARIZONA	LINE NO. B
DIGITAL PROCESSES T/V DECON + 100% COVERAGE		
Delta Exploration Co Inc. Houston, Texas	FIELD DATA	PROCESSING DATA
DATE PARTY NO. 10	FIELD TAPE Techno REC SR	DATE 9-28-70 DECON OPER 120 Ms
ENERGY SOURCE Dynamite	REC FILTER TYPE GAIN 4GC	CODE SR 2 Ms DATUM 1800' +
Seismic Computing Corp. Houston, Texas	FIRING INT SP INT 650'	DIG FILTERS SHALLOW 40-100 DEEP 40-100
	CABLE LENGTH 600'	SCALE - HORZ 24 TR/IN. VERT 10 IN/SEC
	OFFSET #1(600)-#12(50)-0'-#3(50)-#24(600)	VEL FUNC SeisCom's Velocity Spectra
	DIR SHOT NORTH	



VEL USED 4 Ms. 12500'/s
1500 Ms. 12500'/s.

AJO
LINE B

← NORTH →

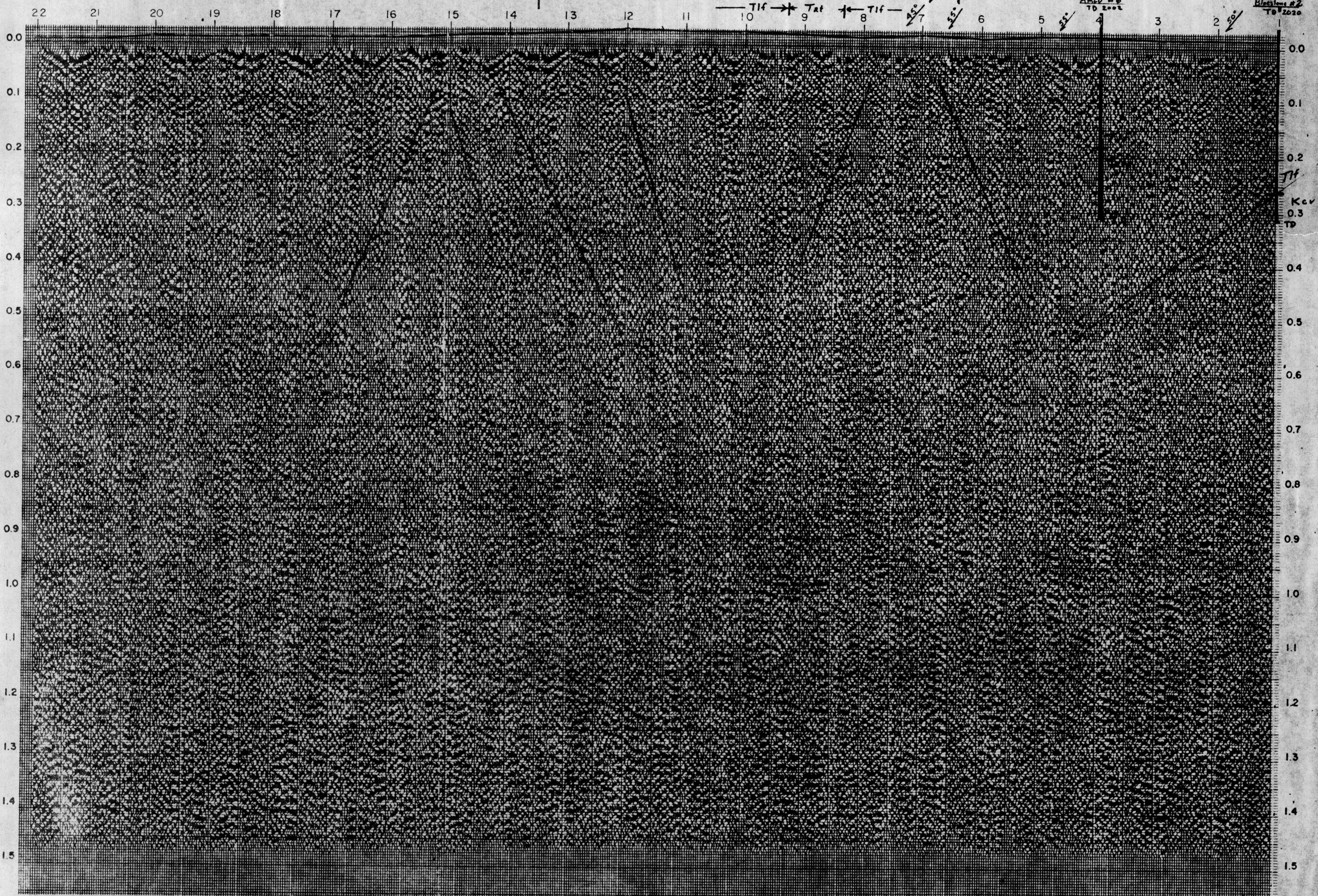
Locomotive Rock
800' west

Vol. Extrinsic

Surface Dip
55°

Line A
SP 17-8
Anch #6
TD 2002

Line C
SP 17-8
Blow #2
TD 2020



ADMMR 0043-007