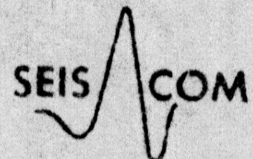


AJO
LINE A



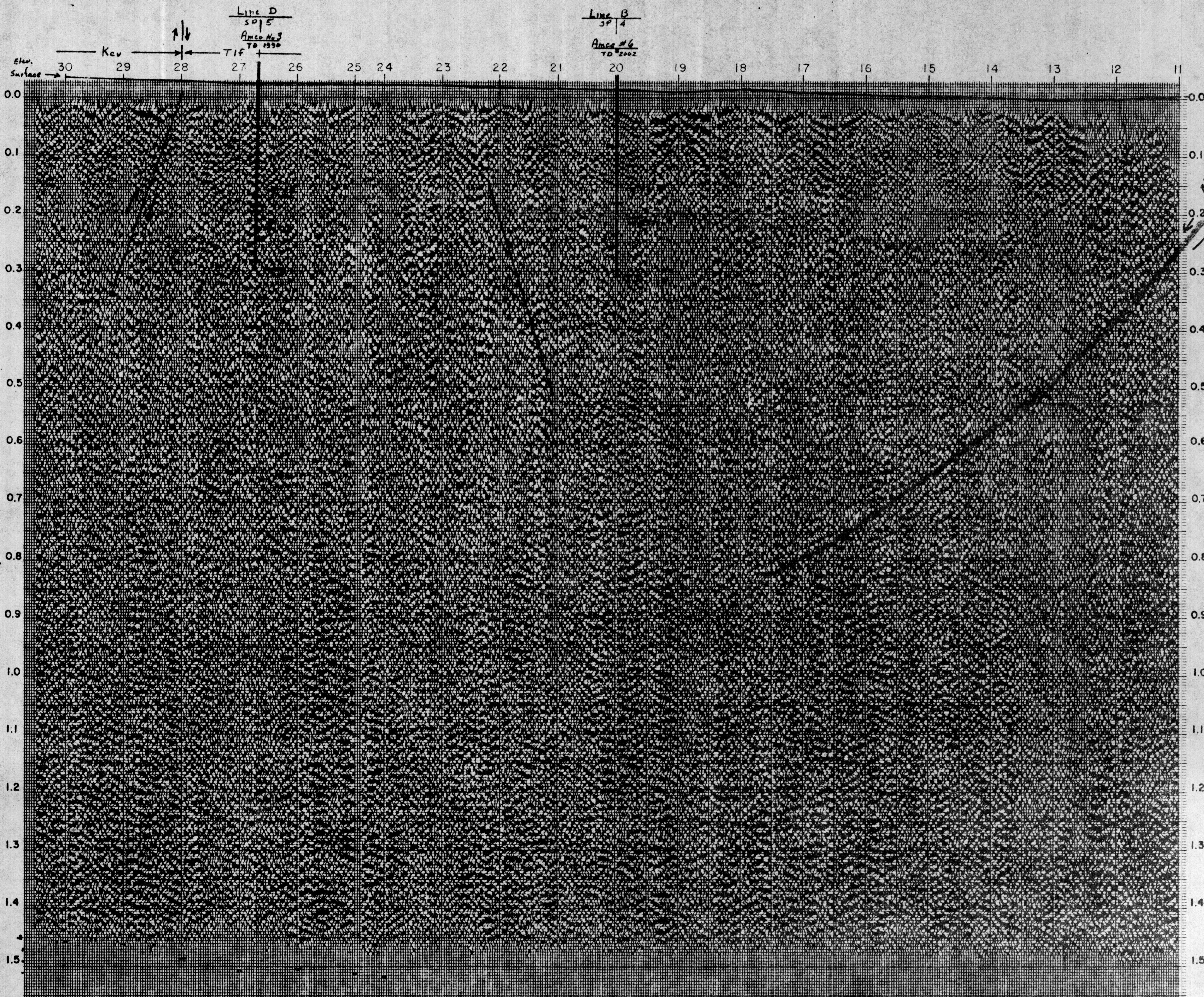
LOUISIANA LAND & EXPLORATION COMPANY		
AREA AJO	LOCATION PIMA CO, ARIZONA	LINE NO A
DIGITAL PROCESSES: T/V DECON + 100% COVERAGE		
Delta Exploration Co Inc. Houston, Texas	FIELD DATA	PROCESSING DATA
DATE	FIELD TAPE Techno	REC SR
PARTY NO 10	REC FILTER	TYPE GAIN AGC
ENERGY SOURCE Dynamic	FIRING INT	SP INT 550'
Seismic Computing Corp. Houston, Texas	CABLE LENGTH 600'	GEO TRACE
	OFFSET #1(600)-#12(50)-0-	DIR SHOT EAST
	#3(50)-#24(600)	
		DATE 9-28-71 DECON OPER 120 Ms
		CODE SR 2 Ms DATUM +1800'
		DIG FILTERS SHALLOW 40-100 DEEP 40-100
		SCALE - HOR 24 TR/IN, VERT 10 IN/SEC
		VEL FUNC SeisCom's Velocity Spectra



VEL USED 4 Ms 12500'/s
1500Ms 12500'/s

1

EAST



Block
Fault

2

ADM MR 0043-008