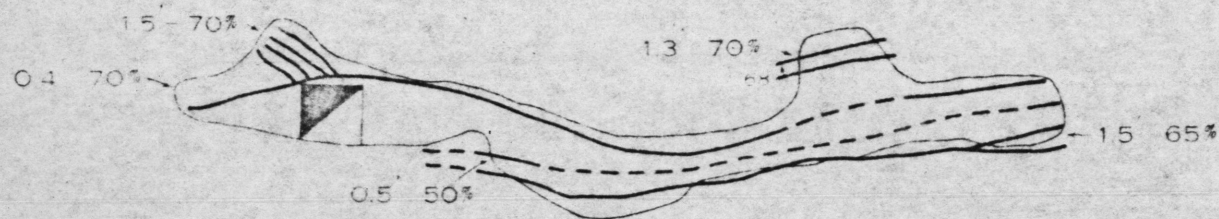
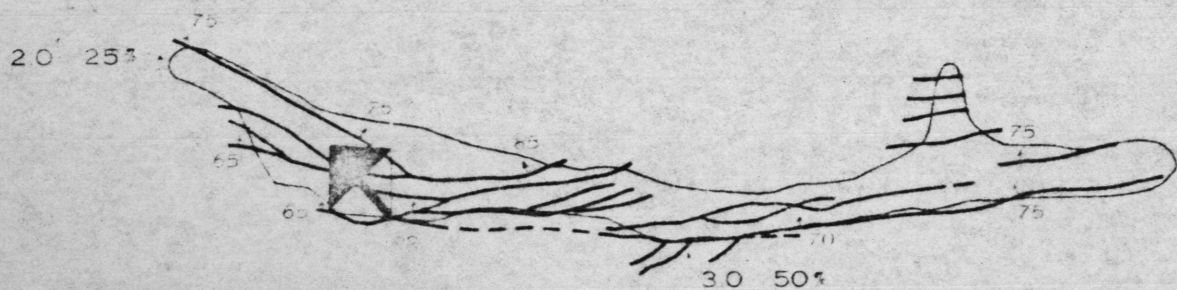


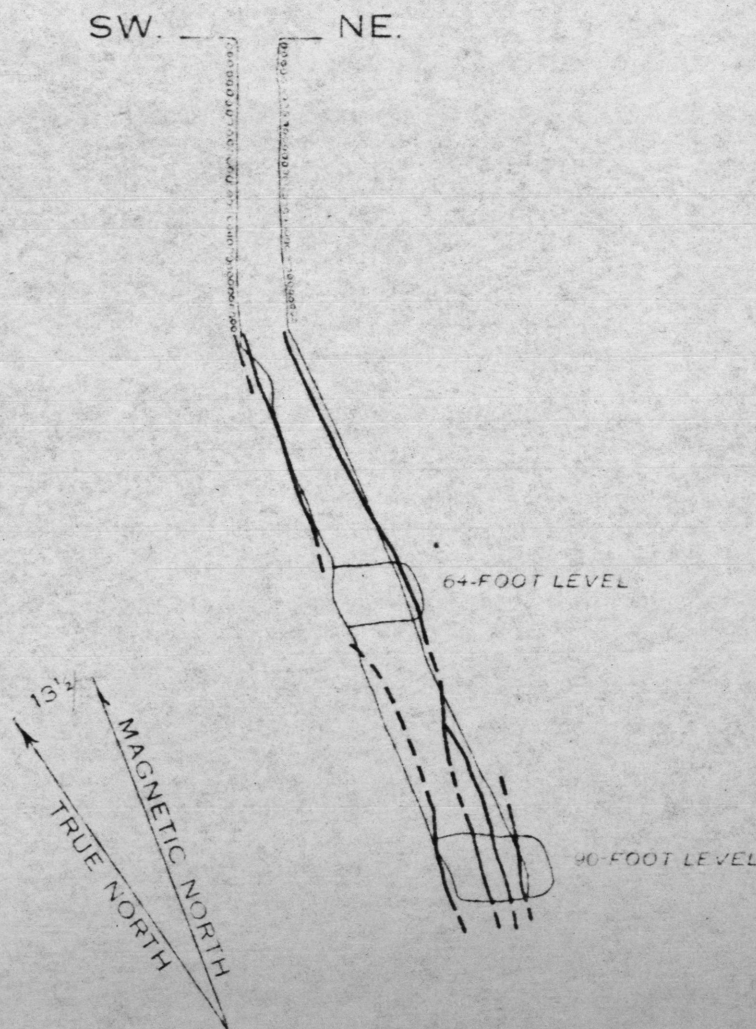
PLAN OF 64-FOOT LEVEL



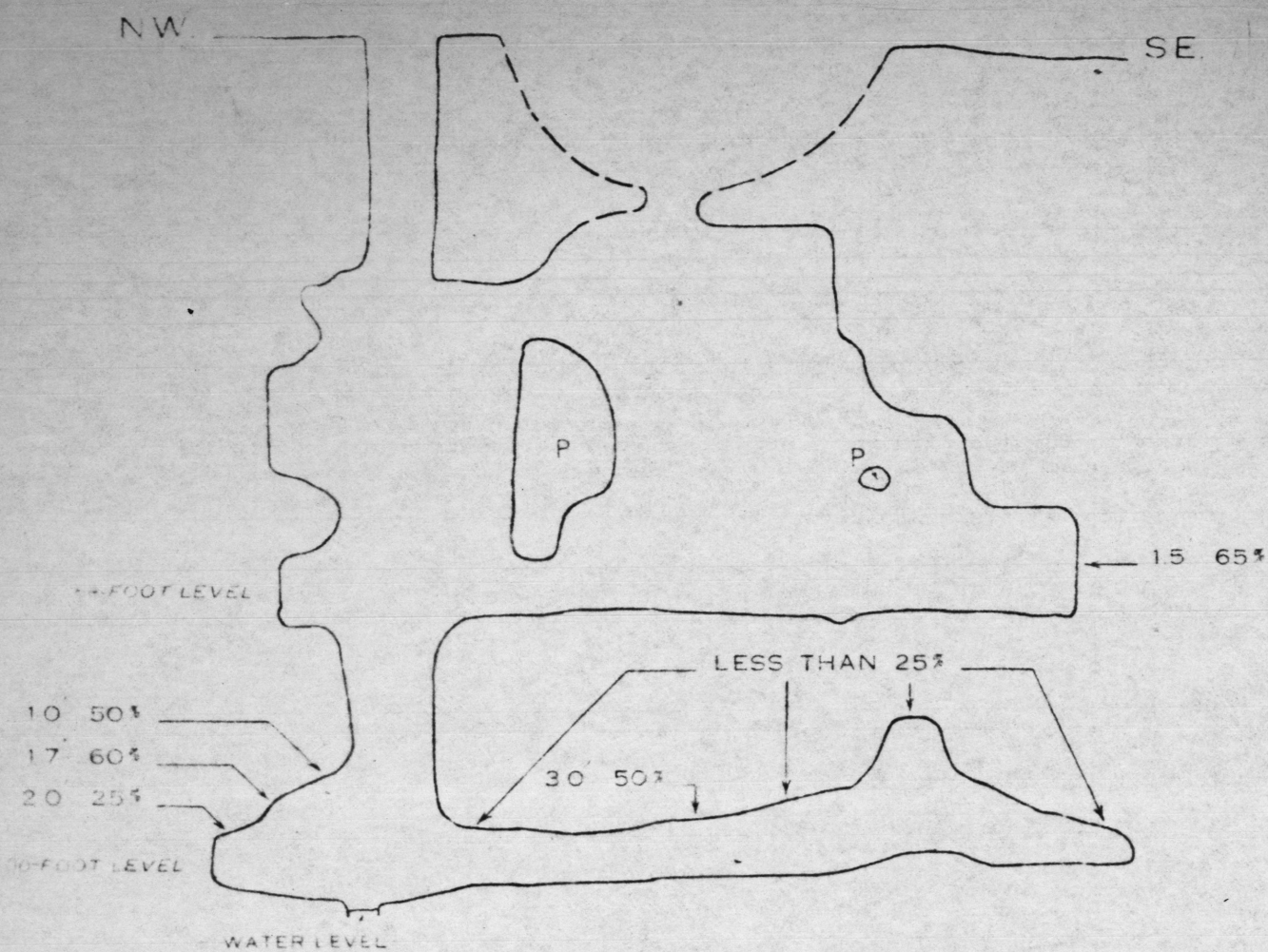
PLAN OF 90-FOOT LEVEL



SECTION THROUGH SHAFT



SECTION ALONG VEIN



EXPLANATION

- Fault, showing dip
- Width of fluor spar vein and estimated content of CaF₂
- Inclined shaft
- Bottom of shaft
- Pillar
- Lagging

0 20 40 60 80 FEET

Tape and compass survey
by R. D. Traile and J. K. Grunig
March 1944

LEVEL MAPS AND SECTIONS, LUCKIE NO. 2
FLUORSPAR MINE, GREENLEE COUNTY, ARIZONA

ADMMR0029-002