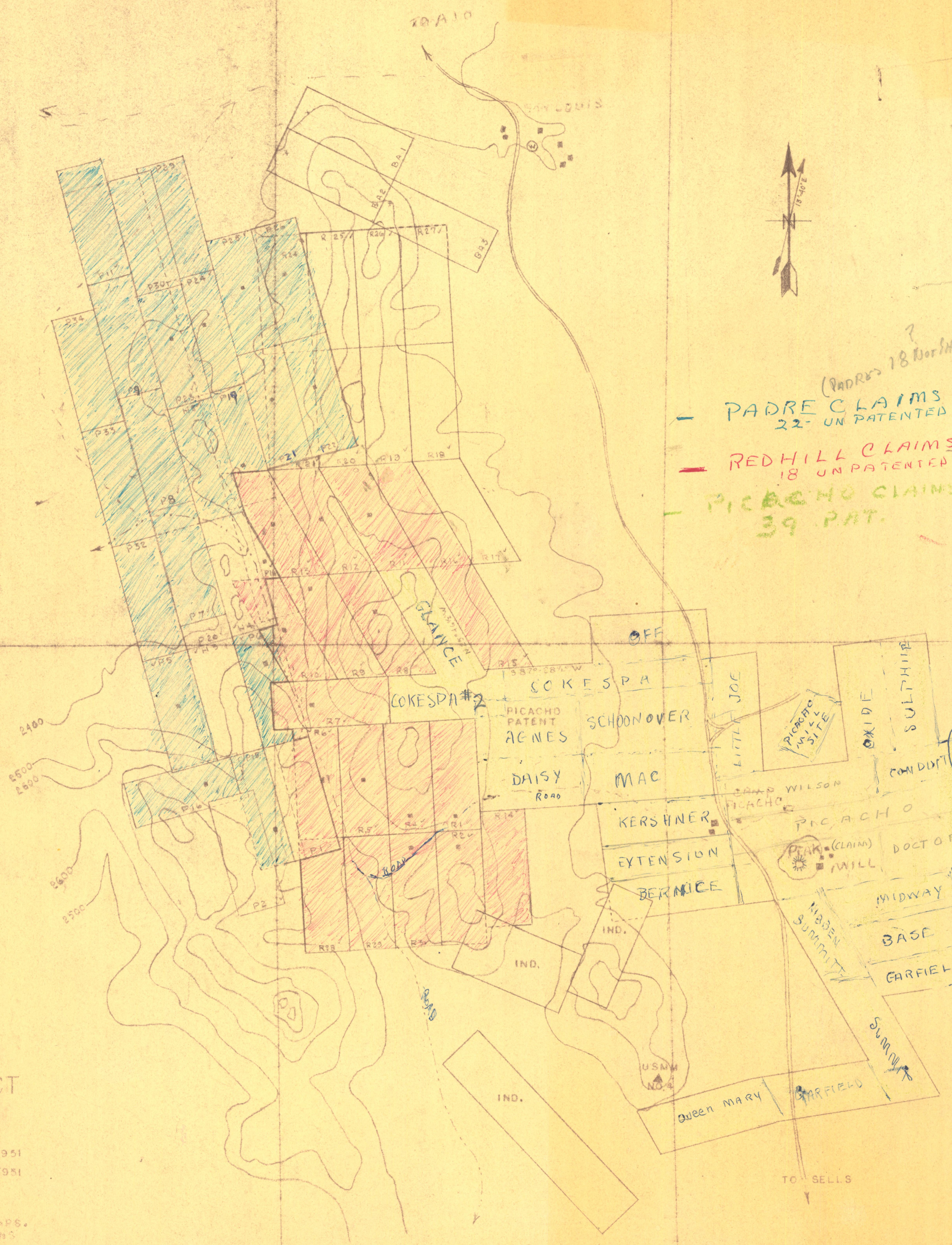


- RED HILL CLAIMS (R NO.)
- RUSSEL CLAIMS (P & H NO.) ▲
- INDIAN TRIBE PATENTS (ING.)
- PICACHO PATENTS
- BULLY AN CLAIMS (SA NO.) ▲



(PADRE 18 Nor Sh...)  
 - PADRE CLAIMS  
 22 UNPATENTED  
 - REDHILL CLAIMS  
 18 UNPATENTED  
 - PICACHO CLAIMS  
 39 PAT.

RED HILL COPPER PROSPECT  
 PIMA COUNTY, ARIZONA

1 IN = 1000 FT.

JULY, 1951

▲ REVISED OCT. 1951

NOTES:- BRUTON SURVEY ON REDHILL CLAIMS.  
 PATENT LOCATIONS FROM PATENT MAPS.  
 ▲ APPROXIMATE DESCRIPTIVE LOCATIONS  
 OF RUSSEL GROUP AND BALLAM CLAIMS.

ADMMR0011-002