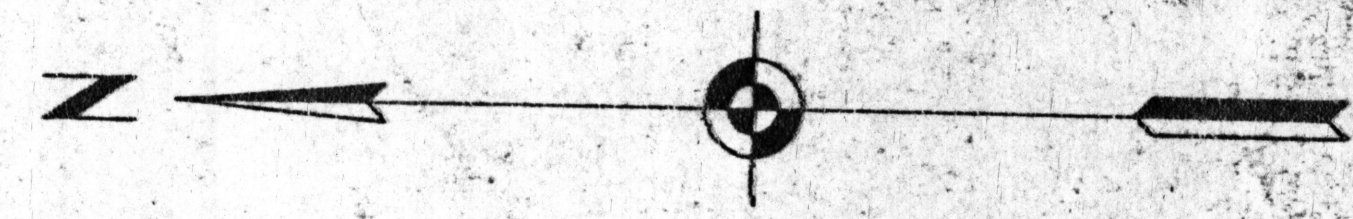
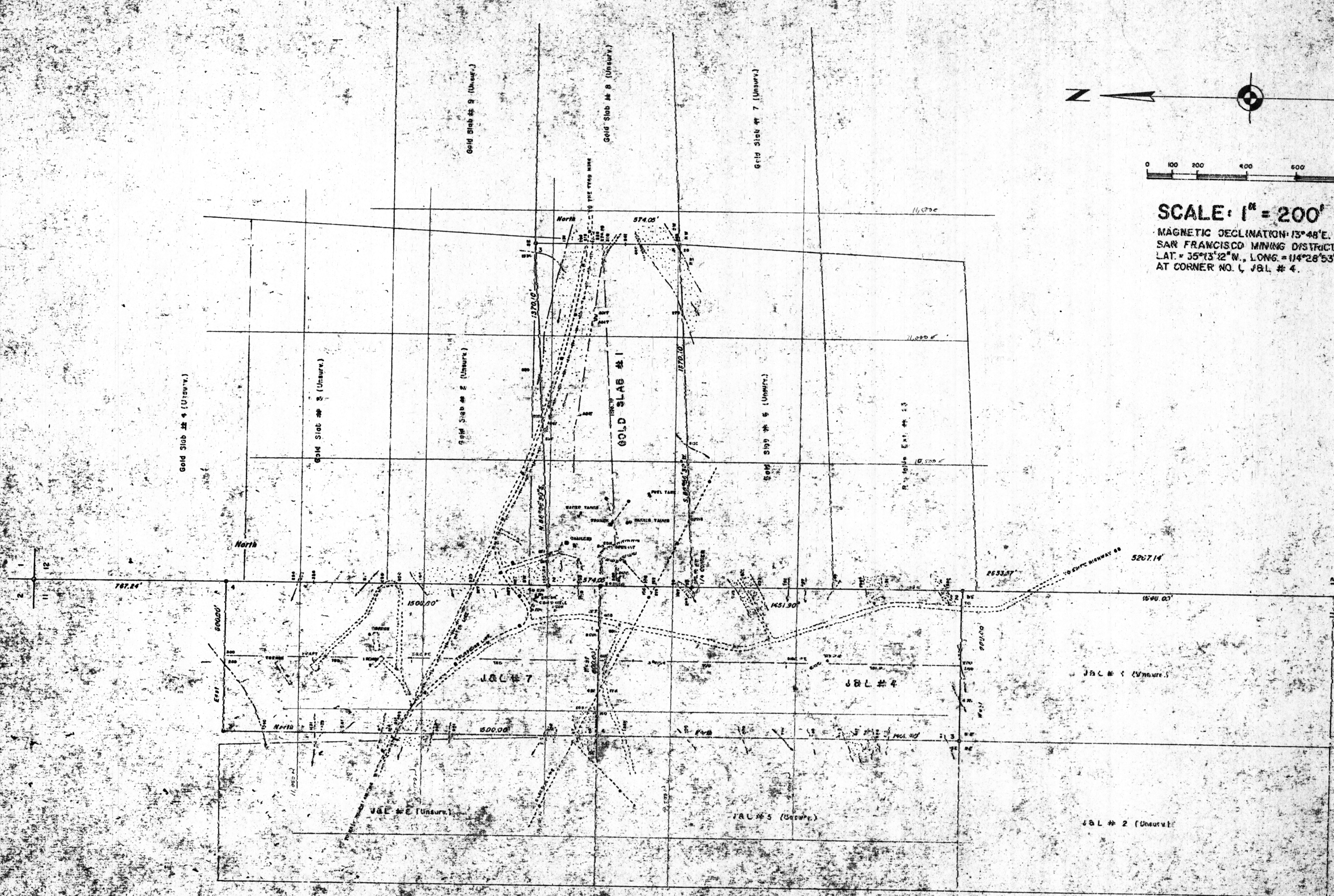


M. S. 4863 SITUATE IN SECTIONS 11 & 12, T.21N., R.21W., G. & S.R.M., MOHAVE COUNTY, ARIZONA.



SCALE: 1" = 200'

MAGNETIC DECLINATION: 13°48'E.  
 SAN FRANCISCO MINING DISTRICT.  
 LAT. = 35°13'12"W., LONG. = 114°28'53"W.  
 AT CORNER NO. 1, J.B.L. # 4.



PRELIMINARY

ADMMR0007  
 -096

DATE OF THIS SURVEY	APPROVED FOR THE ARIZONA STATE OFFICE, U.S.B.L.M.
JOB NO. 662	BY: [Signature]
DRAWN BY: [Signature]	DATE: March 31, 1987
SCALE: AS SHOWN	SHEET 1 OF 1