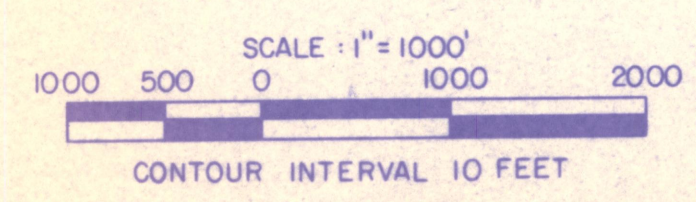
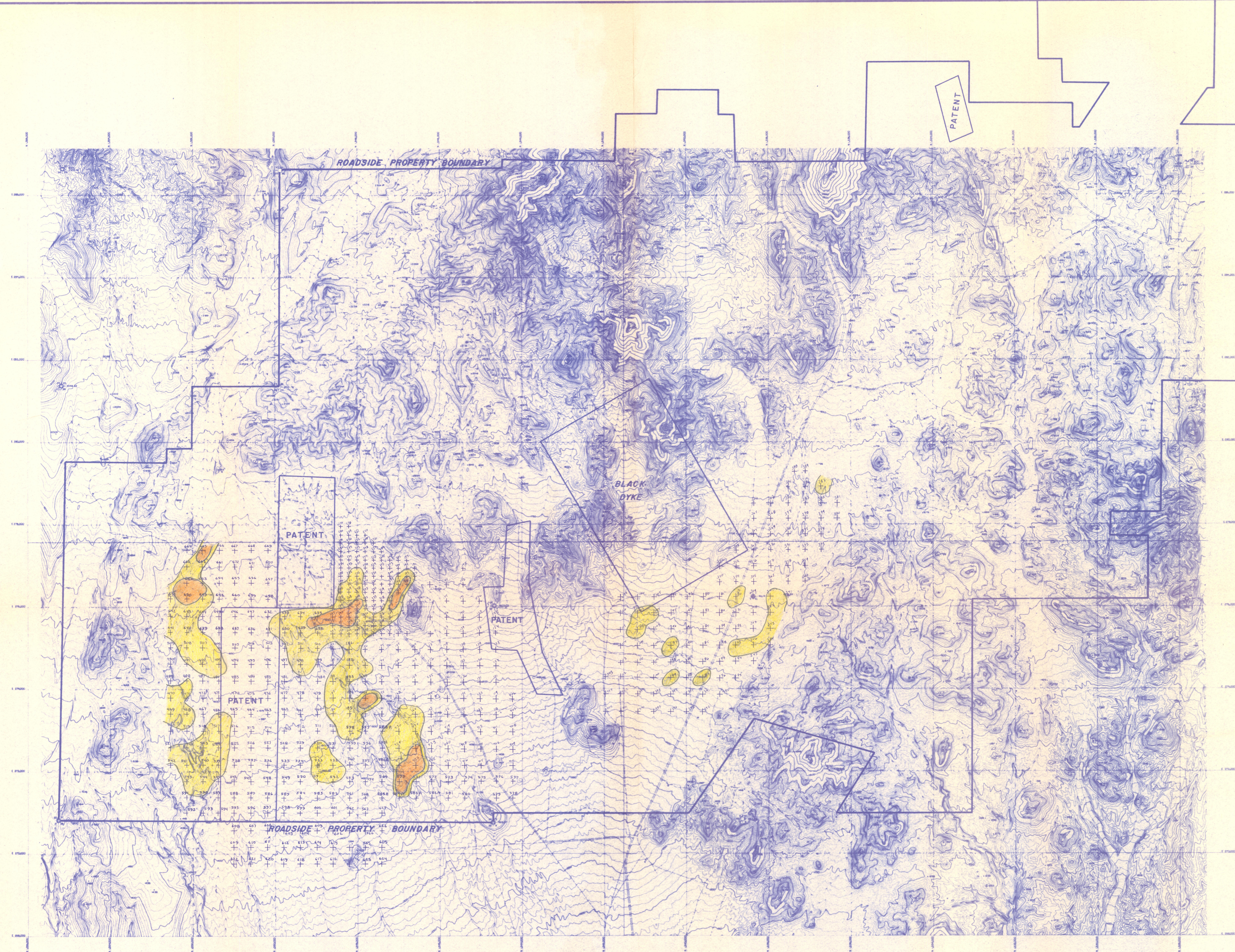


ADMNR 0007-068

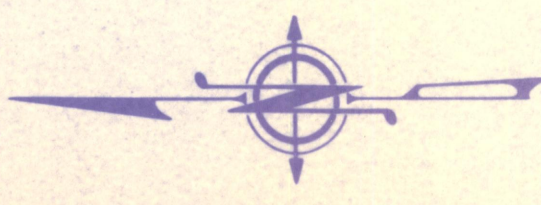
ADMNR 0007-068



COMPOSITE INDEX

1	2
3	4

- + SAMPLE LOCATION (RM 350)
- WEAKLY ANOMALOUS
- MODERATELY ANOMALOUS
- STRONGLY ANOMALOUS
- MBG =



Cu IN VEG

- MODERATELY ANOMALOUS
- WEAKLY ANOMALOUS

**ROADSIDE PROPERTY  
BIOGEOCHEMICAL SURVEY**  
MOHAVE COUNTY, ARIZONA

DATE ORIG.	DATE REVISED	SCALE	1" = 1000 FEET
PREPARED BY	DRAFTED BY	PROJECT NO.	

**AMERICAN COPPER & NICKEL CO., INC.**