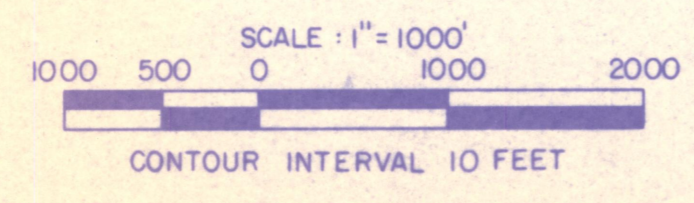
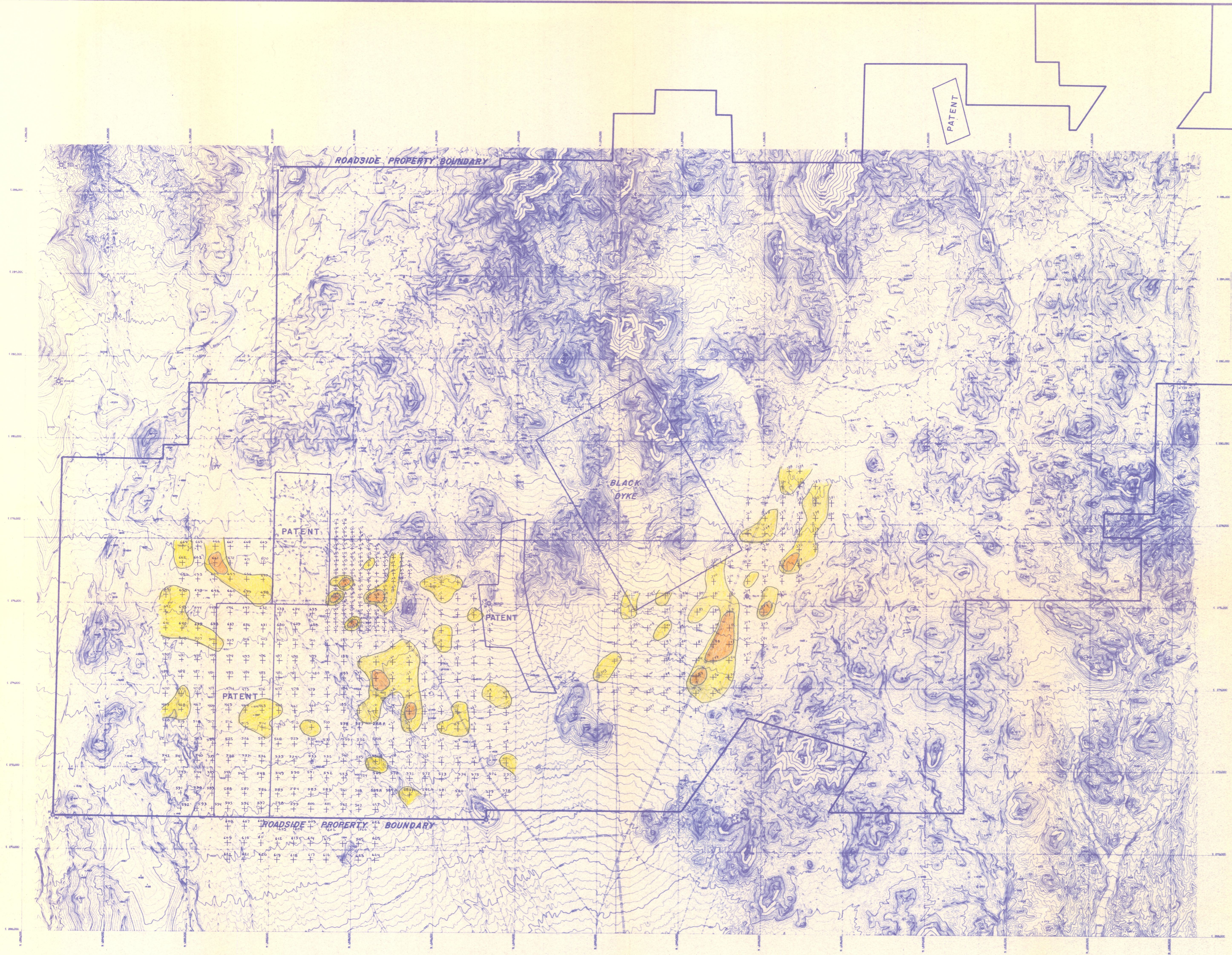


ADMNR 0007-067

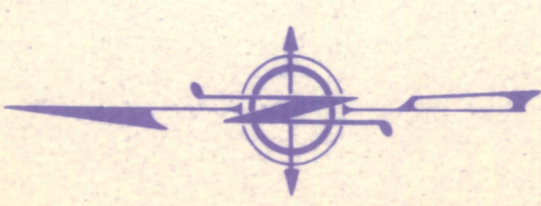
ADMNR 0007-067



COMPOSITE INDEX

1	2
3	4

- + SAMPLE LOCATION (RM 350)
- WEAKLY ANOMALOUS
- MODERATELY ANOMALOUS
- STRONGLY ANOMALOUS
- MBG =



- Au IN VEG*
- MODERATELY ANOMALOUS
 - WEAKLY ANOMALOUS

**ROADSIDE PROPERTY
BIOGEOCHEMICAL SURVEY**
MOHAVE COUNTY, ARIZONA

DATE ORIG.	DATE REVISED	SCALE	1" = 1000 FEET
PREPARED BY	DRAFTED BY	PROJECT NO.	

AMERICAN COPPER & NICKEL CO., INC.