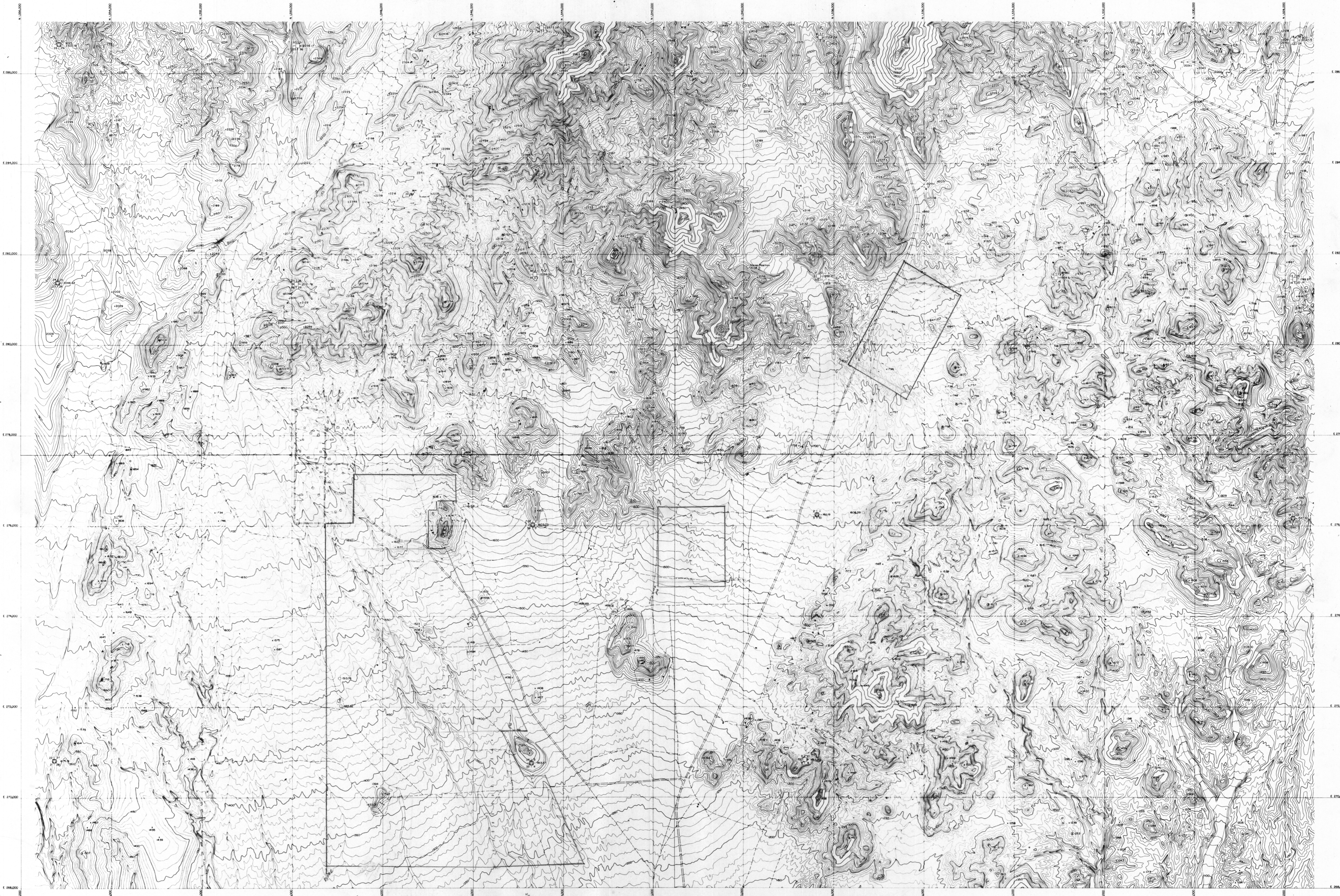


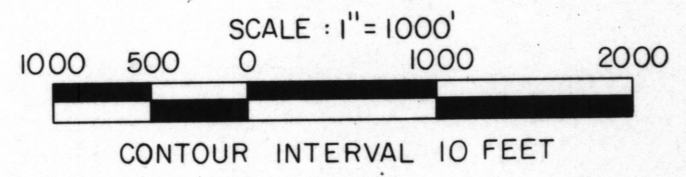
ADMMR 0007-043

Roadside
14 lines N 30° E
25' spacing
61.5 ft / 1 mi



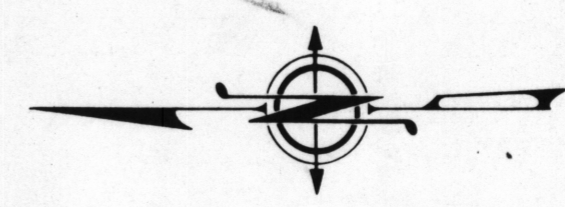
ADMMR 0007-043

Handwritten notes and a cross symbol: "Kirkman Road", "Bl. 5.5 Sec", "10 lines N 30° E", "25' spacing", "61.5 ft / 1 mi".



COMPOSITE INDEX

1	2
3	4



ANACONDA Minerals Company
Division of AtlanticRichfieldCompany