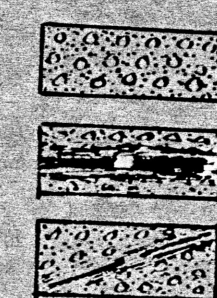


Permian recementation of  
early Paleozoic (Cambrian,  
Ordovician, Silurian, Devonian,  
Carboniferous) contains  
throughout the depth  
of sedimentation frag-  
ments of quartzite, gneiss,  
etc., later cementation  
with ferromagnesian  
of a reddish appearance  
oxidation of iron to  
mineral. The more  
imporous zones are  
unsubjected and retain  
the characteristic gise.  
Can mineral  
Classed as a coal seam  
conglomerate, being the  
actual recementation  
of a former sludge of  
conglomerate, as above  
stated.

Conglomerate  
Master faults  
Master Slips



SHEET NO. 1  
TO ACCOMPANY  
GEOLOGICAL REPORT OF EWBEDFORD, E.M.  
YOUNG MINES CO.  
YOUNGSBERG ARIZONA  
DECEMBER 1923  
GEOLOGICAL FEATURES OF THE A, B & C LEVELS  
PLANS & CROSS-SECTION.  
Scale 1 in = 40 ft.



EW Bedford, Dec 23rd 1923.