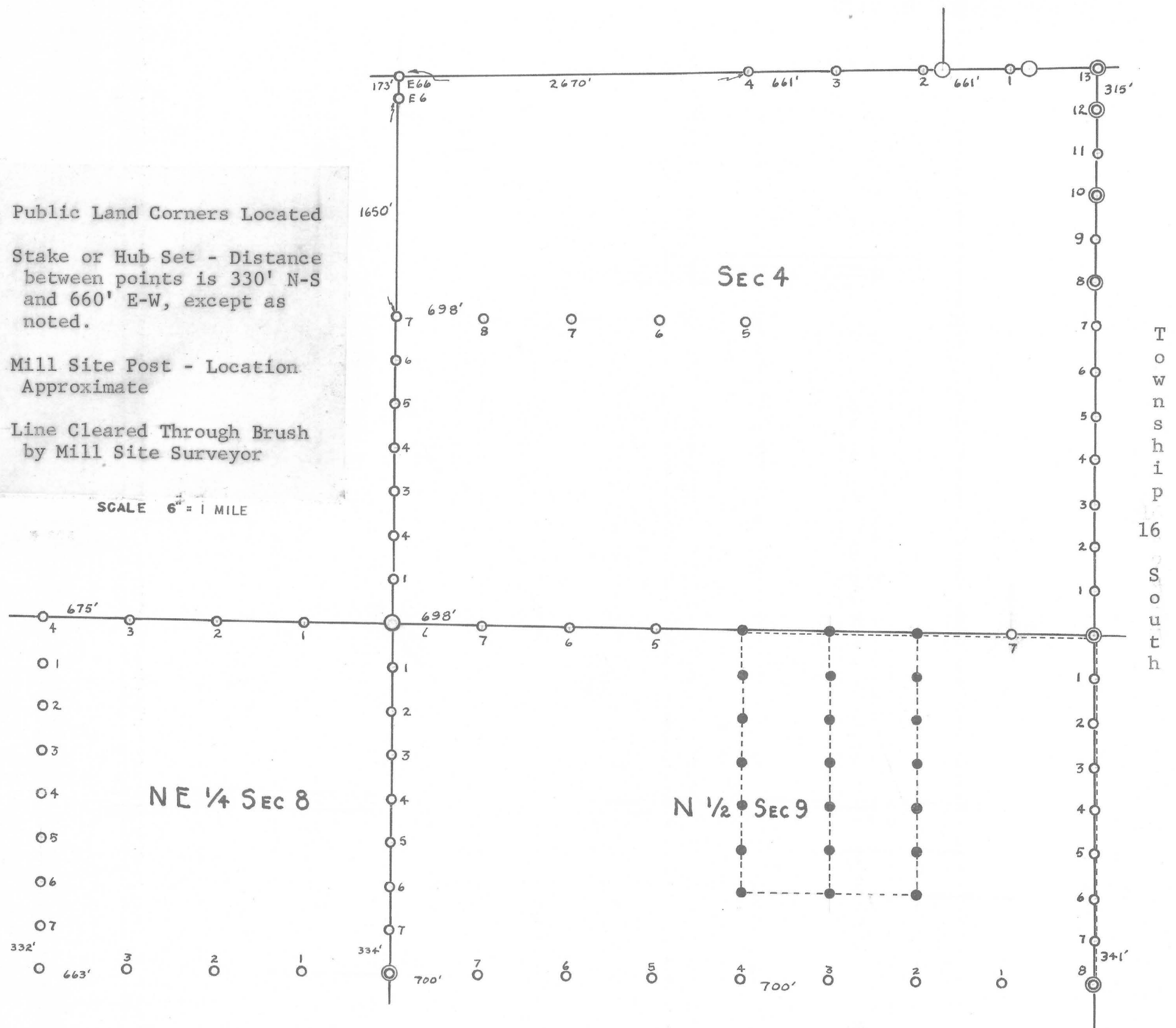


Range 10 East

- Public Land Corners Located
 - Stake or Hub Set - Distance between points is 330' N-S and 660' E-W, except as noted.
 - Mill Site Post - Location Approximate
- Line Cleared Through Brush by Mill Site Surveyor

SCALE 6" = 1 MILE



SAN XAVIER RANCH

CLAIM CONTROL SURVEY

by

HEINRICHS GEOEXPLORATION COMPANY

P.O. BOX 5671

TUCSON, ARIZ.