

EXPLANATION

Geology

- an ANDESITE  
Plugs
- db DIABASE  
Intrusive masses, dikes and sills
- D-ls MARTIN LIMESTONE 325' Thickness  
Generally rather thin beds, fossiliferous in upper half. Grity at base. Shale at top.
- T-qtz TROY QUARTZITE 400' Thickness  
Generally pebbly cross-bedded quartzite with lenses of conglomerate. Shaly rusty beds with worm casts at top.  
Vesicular basalt flow separating Troy and Mesal. 25-75' Thickness
- M-ls MESCAL LIMESTONE 225' Thickness  
Thin varicolored, more or less dolomitic beds with conspicuous cherty layers.
- D-qtz DRIPPING SPRING QUARTZITE 450' Thickness  
Fine-grained varicolored arkosic quartzite, much of it with dark-red and gray banding. Partings between beds not distinct. Ripple marks.

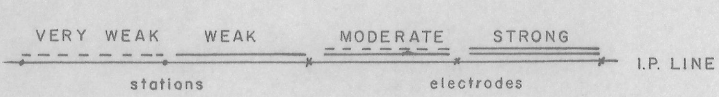
Claims

- KENNECOTT CLAIMS
- HAGEN PATENTED CLAIMS
- HAGEN CLAIMS, 1967 AFFIDAVIT OF LABOR FILED
- HAGEN CLAIMS, DELINQUENT
- FIRST NATIONAL BANK OF ARIZONA PATENTED CLAIMS
- CURRENT HAGEN CLAIMS
- CLAIMS STAKED BY PAUL KAYSER

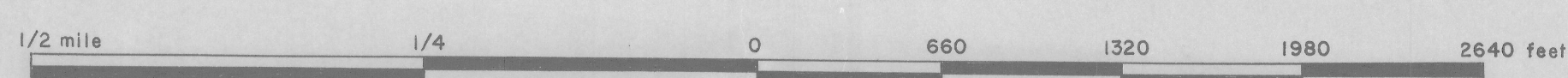
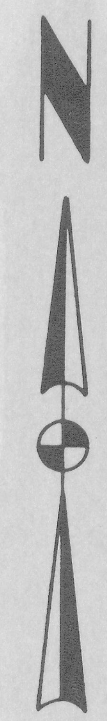
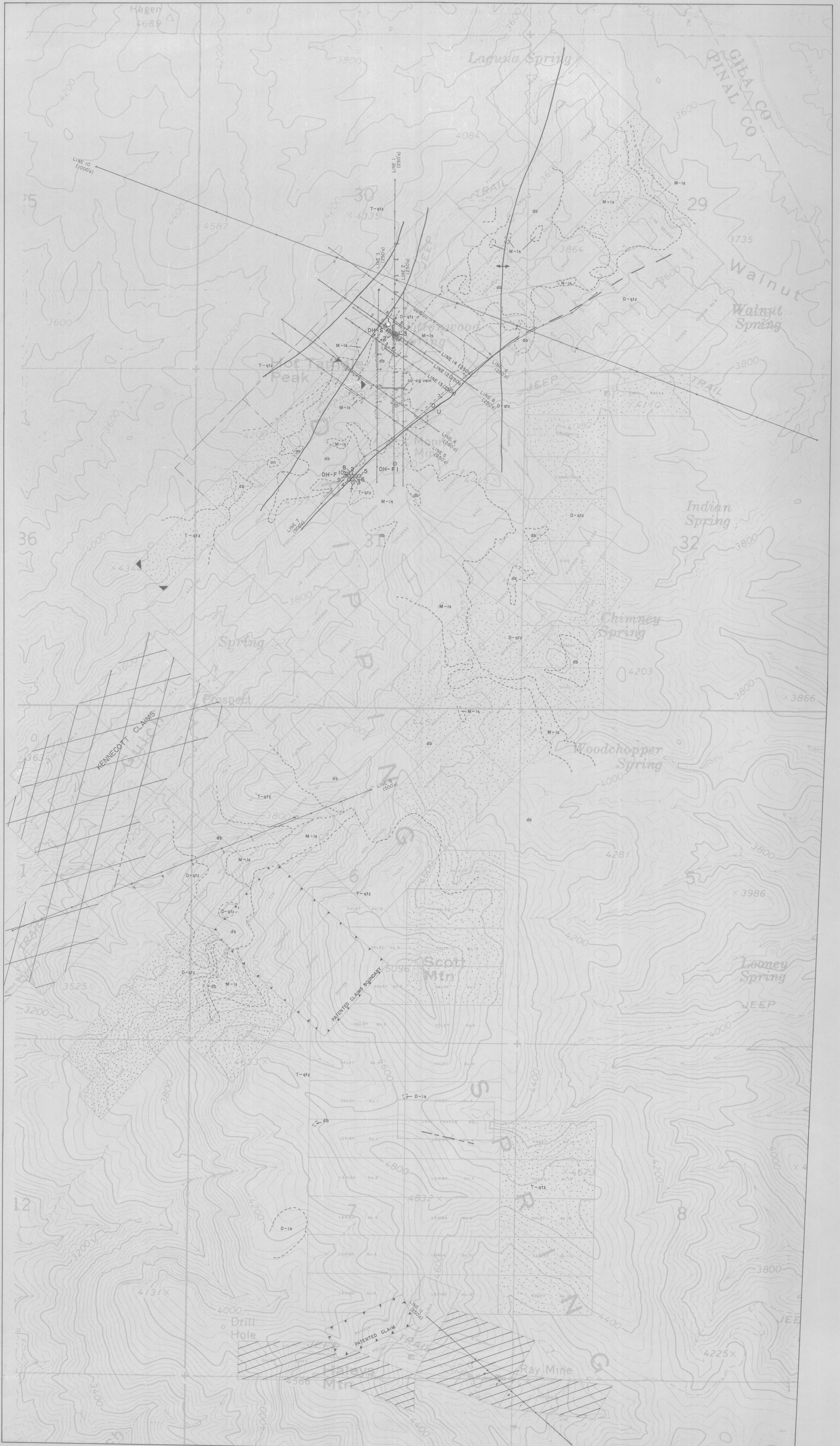
General

- DH-1 DRILL HOLE, DH-F5 (FIRST PHASE), DH-S5 (SECOND PHASE)
- I.P. LINE WITH ILLUSTRATED INTERPRETATION, ELECTRODE NO. & SPREAD NO.

RELATIVE ANOMALY STRENGTH



- FAULT - Showing relative movement
- FAULT
- ANTICLINE



CONTOUR INTERVAL 40 FEET

BUREAU OF GEOGRAPHICAL NAMES  
 COMPOSITE MAP  
 HAGEN PROPERTY  
 FOR  
 PAUL KAYSER  
 Scale: 1" = 600' Date: 3/28/67