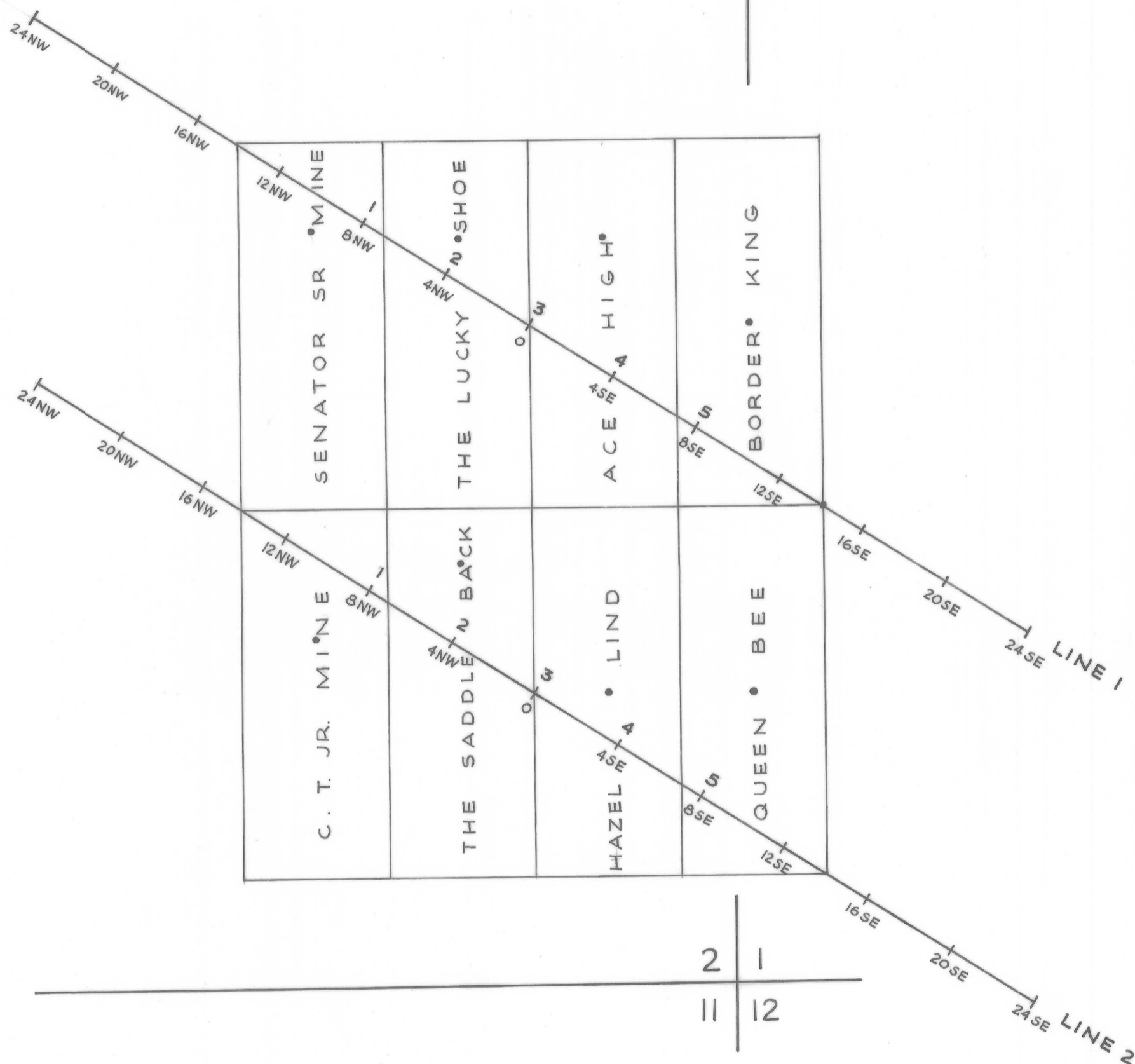


R15E

35 | 36
2 | 1

T
24
S



• LOCATION MONUMENT

INDUCED POLARIZATION SURVEY
 FOUR METALS AREA
 PATAGONIA, SANTA CRUZ CO., ARIZONA
 FOR
 C.T. MOSES, JR.
 BY
 HEINRICHS GEOEXPLORATION CO.
 SCALE: 1" = 500' AUG. 1964