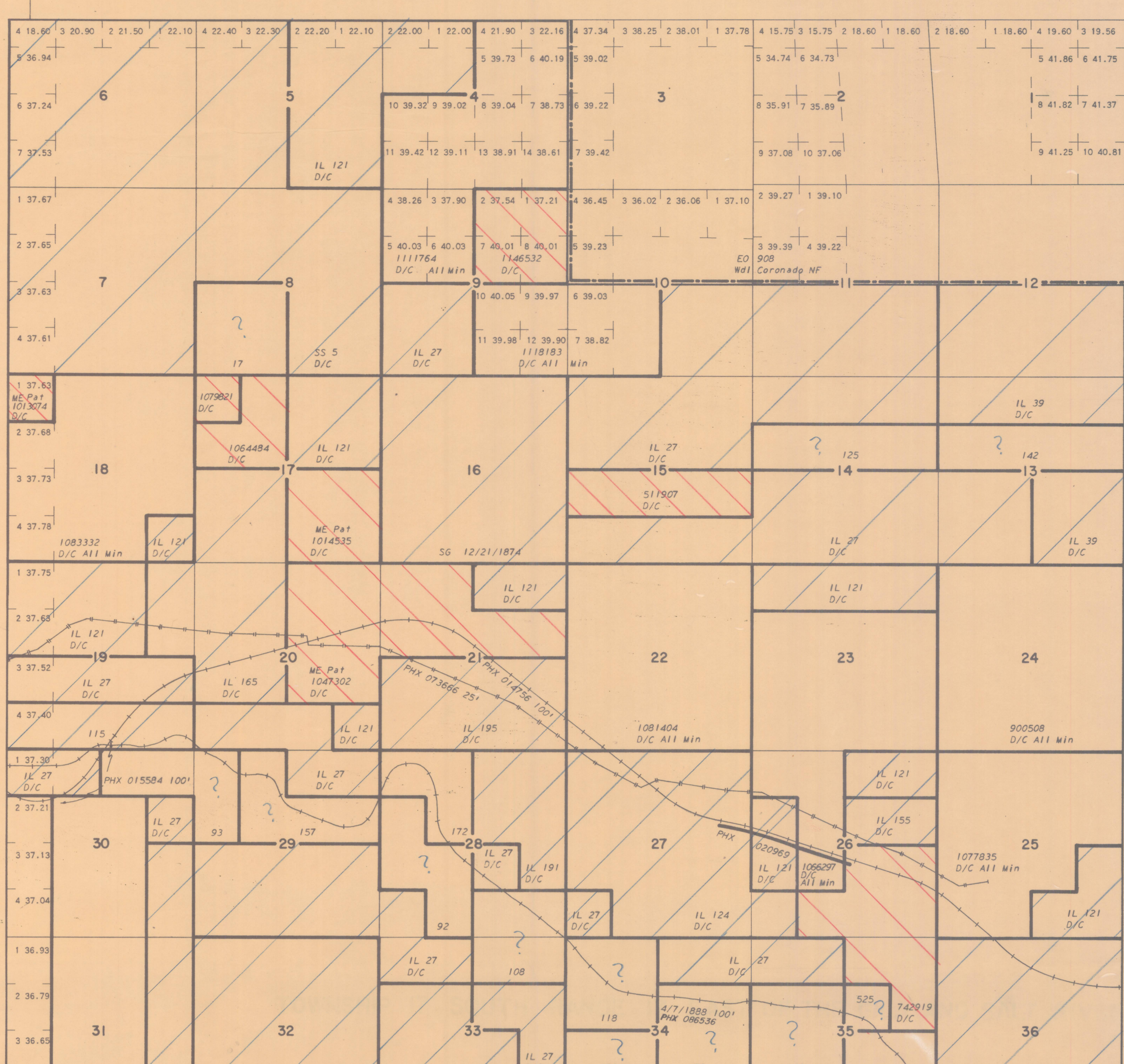


TOWNSHIP 16 SOUTH RANGE 17 EAST OF THE GILA AND SALT RIVER MERIDIAN, ARIZONA

PIMA COUNTY

STATUS OF PUBLIC DOMAIN LAND AND MINERAL TITLES



INDEX TO SEGREGATED TRACTS table with columns: TRACT NO., T, R, SEC., SUBDIVISION

FOR ORDERS EFFECTING DISPOSAL OR USE OF UNIDENTIFIED LANDS WITHDRAWN FOR CLASSIFICATION, MINERALS, WATER AND/OR OTHER PUBLIC PURPOSES, REFER TO INDEX OF MISCELLANEOUS DOCUMENTS.

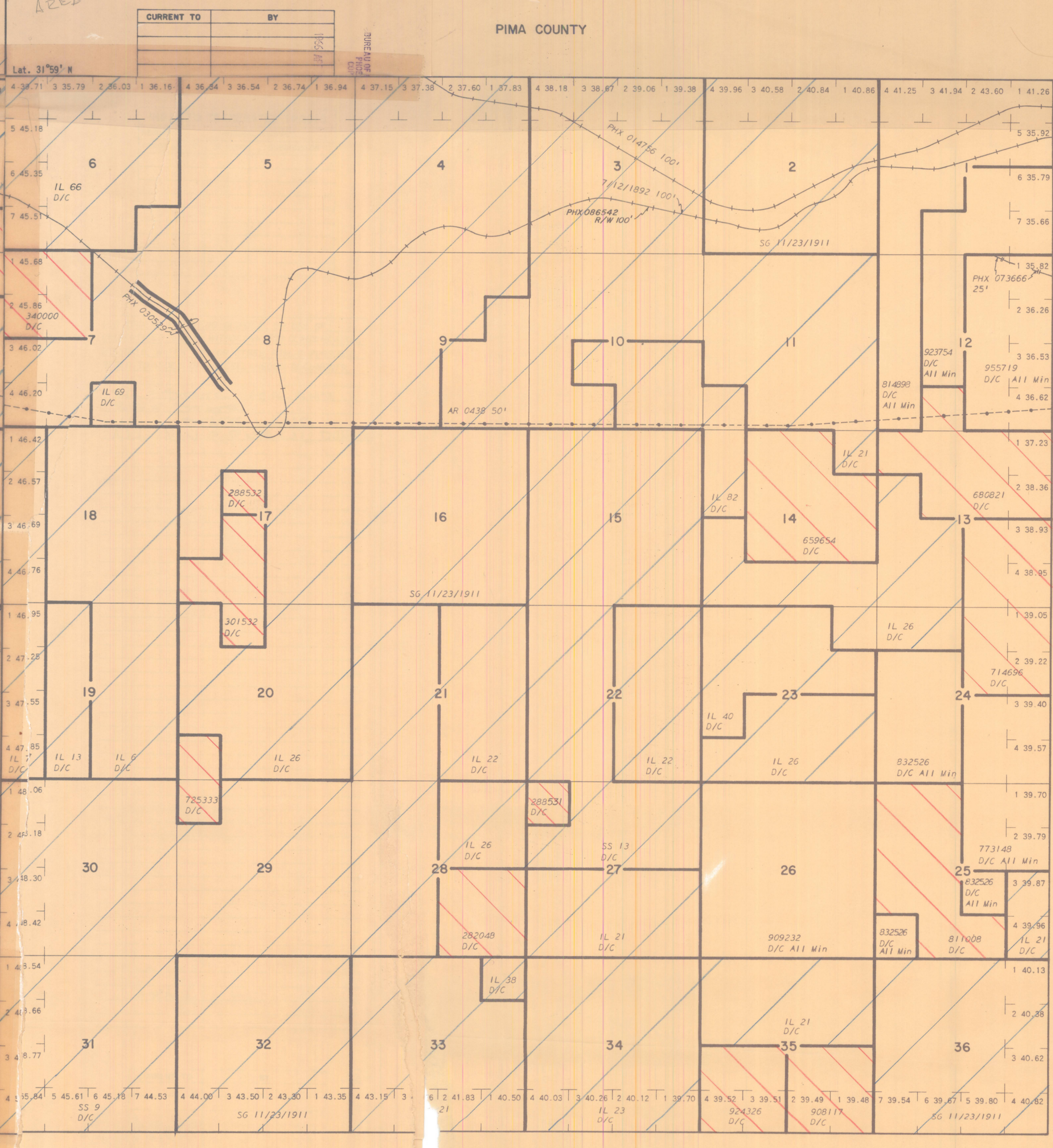
D/C = PRIVATE
S.G. = STATE GRANT
S.S. = STATE
I.L. = STATE LAND
ALL MIN. = PUBLIC DOMAIN

TOPO: RINCON VALLEY - 1957

OUTH RANGE 18 EAST OF THE GILA AND SALT RIVER MERIDIAN, ARIZONA

PIMA COUNTY

STATUS OF PUBLIC DOMAIN LAND AND MINERAL TITLES

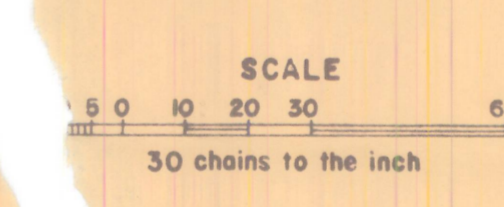


INDEX TO SEGREGATED TRACTS table with columns: TRACT NO., T, R, SEC., SUBDIVISION

FOR ORDERS EFFECTING DISPOSAL OR USE OF UNIDENTIFIED LANDS WITHDRAWN FOR CLASSIFICATION, MINERALS, WATER AND/OR OTHER PUBLIC PURPOSES, REFER TO INDEX OF MISCELLANEOUS DOCUMENTS.

D/C = PRIVATE
S.G. = STATE GRANT
S.S. = STATE
I.L. = STATE LAND
ALL MIN. = PUBLIC DOMAIN

TOPO: EMPIRE MTS. - 1958



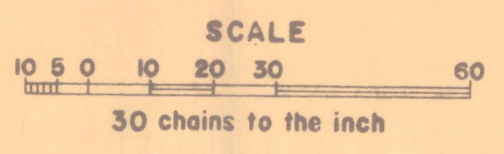
Lat. 31°50' N Long. 110°28' W

FOR ORDERS EFFECTING DISPOSAL OR USE OF UNIDENTIFIED LANDS WITHDRAWN FOR CLASSIFICATION, MINERALS, WATER AND/OR OTHER PUBLIC PURPOSES, REFER TO INDEX OF MISCELLANEOUS DOCUMENTS.

D/C = PRIVATE
S.G. = STATE GRANT
S.S. = STATE
I.L. = STATE LAND
ALL MIN. = PUBLIC DOMAIN
MIN. PATENTS
TOPO: EMPIRE MTS. - 1958

TOPO: RAINBOW - 1957

CURRENT TO BY table with columns: CURRENT TO, BY



Lat. 31°48' N Long. 110°33' W