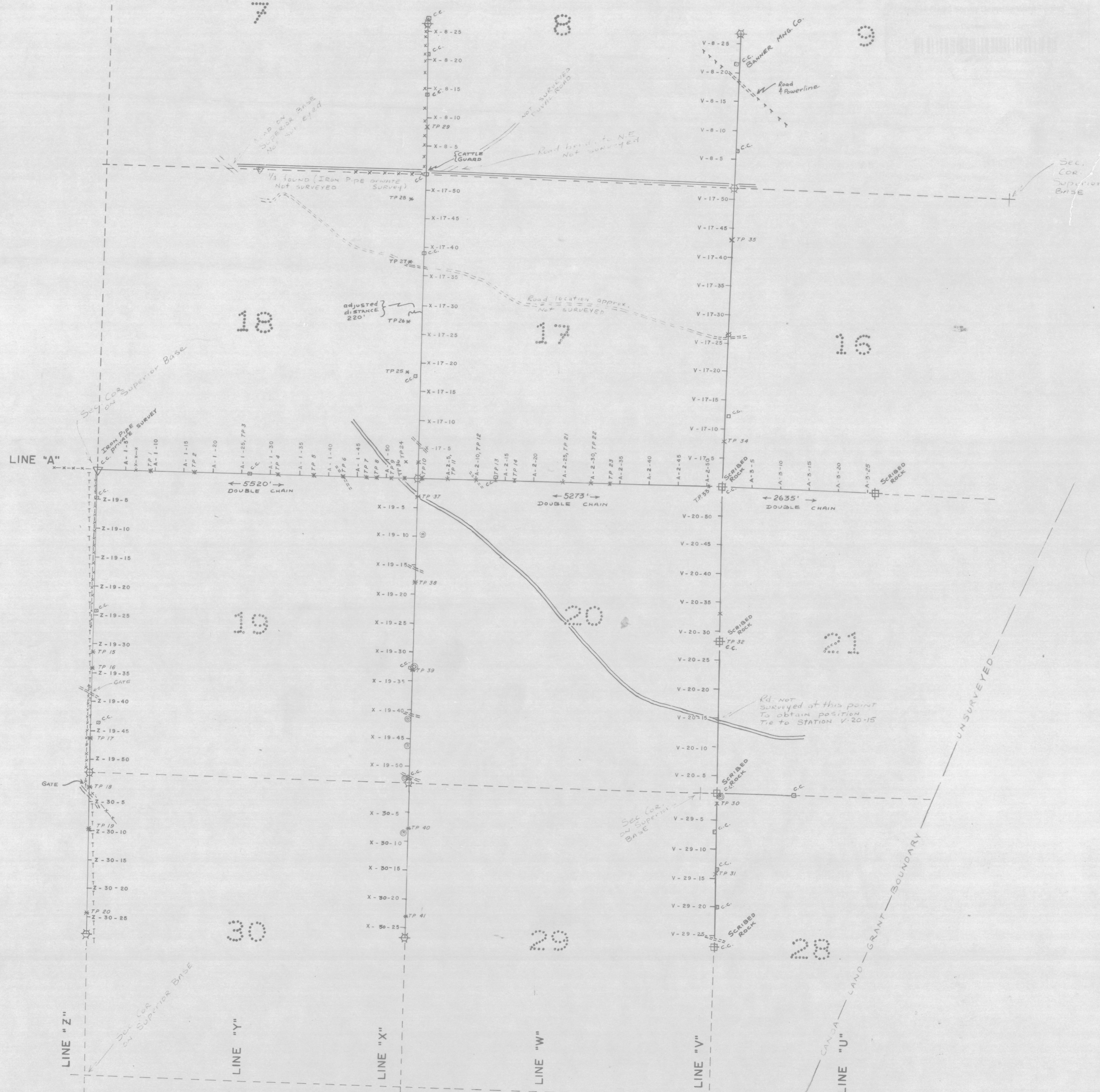


R.12E.

R.13E.

T.18S.

T. 18 S.



INFORMATION

- x-x- Fence Line
- TTTTT Power Line & Phone Line
- === Unimproved Road
- ==== Improved Road
- ⊕ Scribbled Rock Corner Located
- ⊕ Corner Surveyed - Stake Set
- ∇ Iron Pipe Corner Private Survey
- Claim Corner
- * Turning Point
- ⊙ Drill Hole
- ←5280→ Distance Surveyed

Pencil Line indicates unsurveyed position. All Survey Stations identified as shown and are a white tipped 1" x 2" stake set in ground.

Lines are flagged with white and blue. Only drill holes encountered on survey line shown. Sections 7, 18, 19, 30 are wide EAST, WEST. This is common to have larger sections on WEST side of township. This does not agree with plat and was double chained.

HEINRICH'S GEOEXPLORATION COMPANY P.O. Box 5671 Tucson, Arizona		
TRANSIT & STADIA SURVEY DEMETRIE WASH PROJECT FOR THE SUPERIOR OIL COMPANY		
TWIN BUTTES MNG. DISTRICT PIMA COUNTY, ARIZONA		
SCALE: 1" = 1000'	CONTOUR INTERVAL:	REVISIONS
DATE: 2-24-64	DATA BY: U.S.B.L.M., D.A., E.G.H.	
DRAWN BY: S.I.G., E.G.H.	SHEET 1 OF 1	FILE:
	DRAWING NO.:	