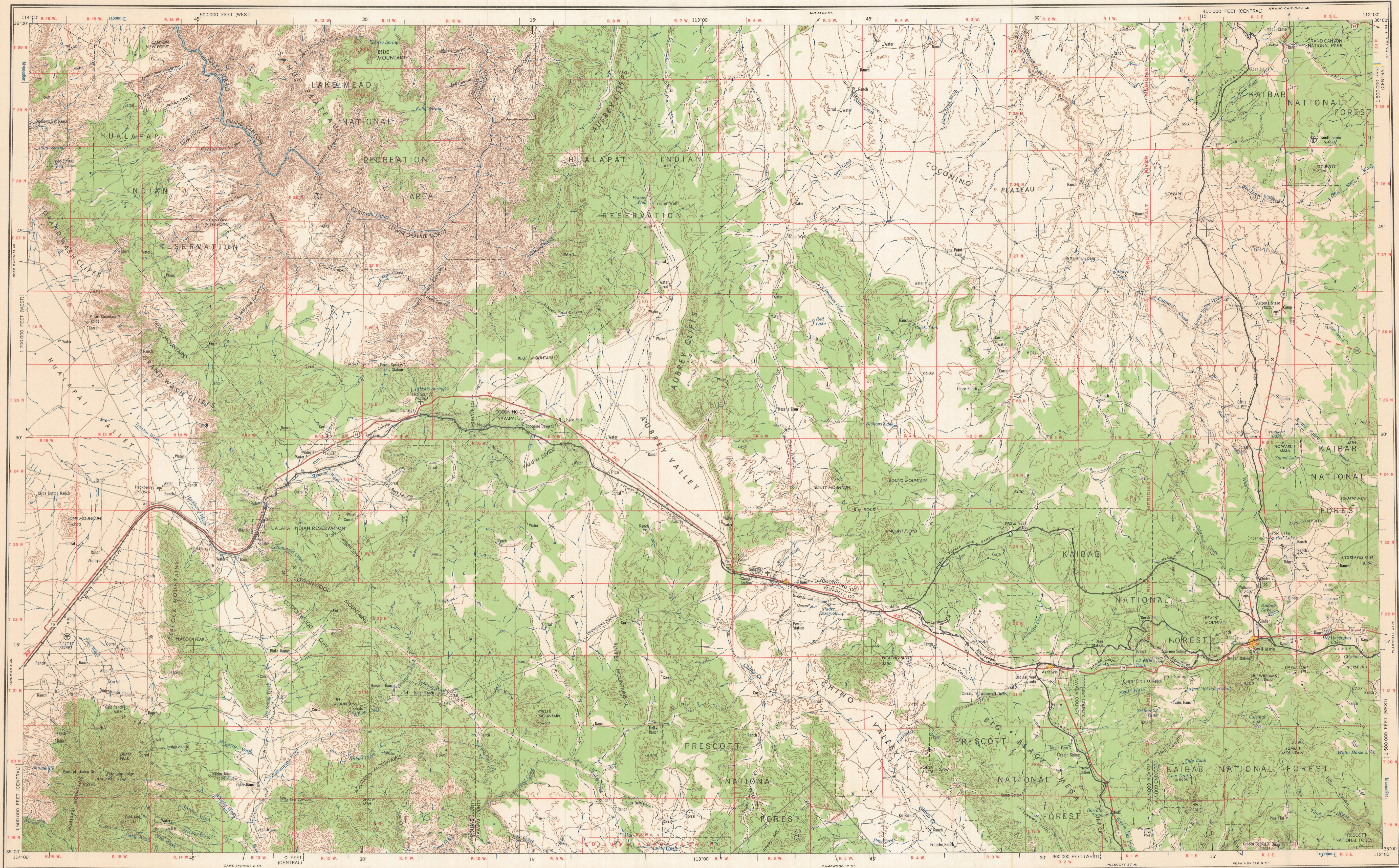


482
JOB



Prepared by the Army Map Service (CGS), Corps of Engineers, U.S. Army, Washington, D.C. Compiled in 1956 by U.S. Coast and Geodetic Survey by photogrammetric methods and from USGS quadrangles, 1:62,500, 1949-50. Planimetric detail revised by photogrammetric methods. Horizontal and vertical control by USGS, USCGS and USCE. Photography field annotated 1954. Limited revision by U.S. Geological Survey 1953.

100,000-foot grids based on Arizona coordinate system, central and west zones.

10,000 meter Universal Transverse Mercator grid ticks, zone 12, shown in blue.

LEGEND

ROAD DATA 1954 PARTIALLY REVISED 1962
 Figures in red denote approximate distances in miles between stars

POPULATED PLACES

Over 500,000
 100,000 to 500,000
 25,000 to 100,000
 5,000 to 25,000
 Less than 5,000

RAILROADS

Standard gauge
 Narrow gauge
 BOUNDARIES
 International
 State
 County
 Park or reservation

LANDMARKS

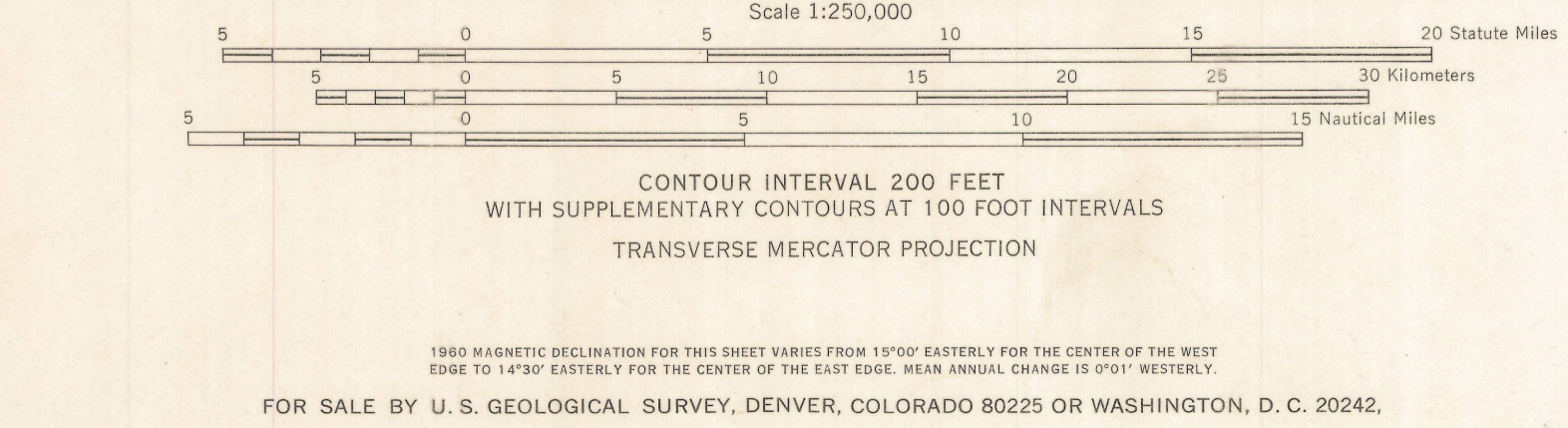
School, Church, Other
 Spot elevation in feet
 Marsh or swamp
 Intermittent or dry stream
 Power line

ROADS

Hard surface, heavy duty
 More than two lanes wide
 Two lanes wide, Federal route marker
 Hard surface, medium duty
 More than two lanes wide
 Two lanes wide, State route marker
 Improved light duty
 Unimproved dirt
 Trail

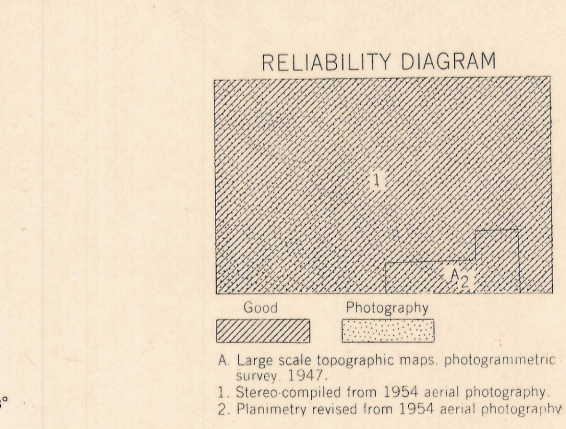
Other Features

Landplane airport
 Landing area
 Seaplane airport
 Orchard
 Woods/bushwood



LOCATION DIAGRAM FOR NI 12-1

NEVADA NI 118 NI 119 NI 120 NI 121 NI 122 NI 123 NI 124 NI 125 NI 126 NI 127 NI 128 NI 129	UTAH NI 127 NI 128 NI 129 NI 130 NI 131 NI 132 NI 133 NI 134 NI 135 NI 136 NI 137 NI 138 NI 139	ARIZONA NI 125 NI 126 NI 127 NI 128 NI 129 NI 130 NI 131 NI 132 NI 133 NI 134 NI 135 NI 136 NI 137 NI 138 NI 139	COLO. NI 129 NI 130 NI 131 NI 132 NI 133 NI 134 NI 135 NI 136 NI 137 NI 138 NI 139 NI 140 NI 141 NI 142 NI 143 NI 144 NI 145 NI 146 NI 147 NI 148 NI 149 NI 150
--	--	---	---



SECTIONIZED TOWNSHIP

6	5	4	3	2	1
7	8	9	10	11	12
18	17	16	15	14	13
19	20	21	22	23	24
30	29	28	27	26	25
31	32	33	34	35	36

TOWNSHIP OR RANGE LINE
 LAND GRANT BOUNDARY

1. Large scale topographic map, photogrammetric survey 1947.
 2. State compiled from 1954 aerial photography.
 3. Planimetry revised from 1954 aerial photography.