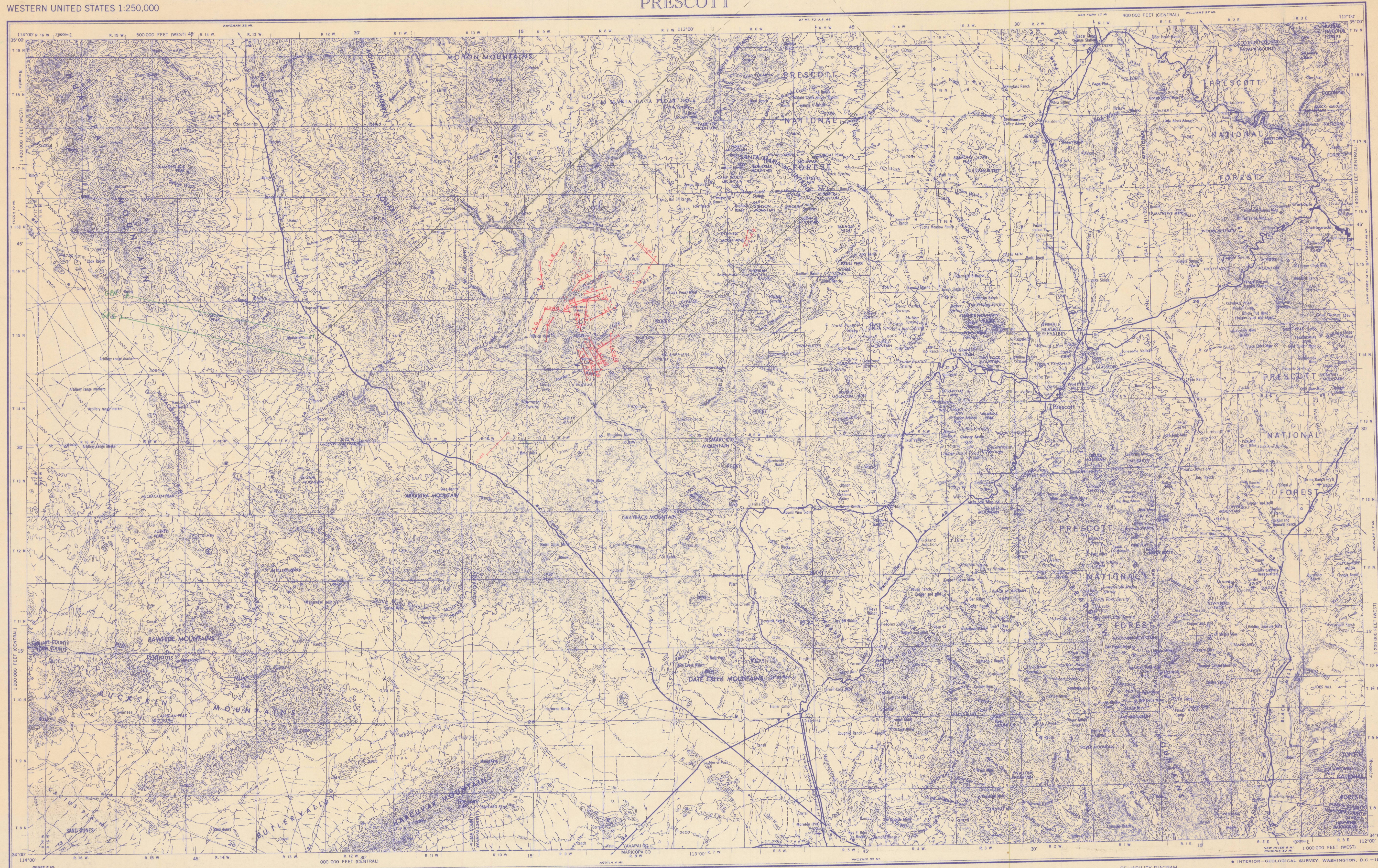


482
JOB



Prepared by the Army Map Service (AGS), Corps of Engineers, U.S. Army, Washington, D.C. Compiled in 1956 by U.S. Coast & Geodetic Survey by photogrammetric methods and from USGS quadrangles, 1:62,500, 1947-1950. Planimetric detail revised by photogrammetric methods. Horizontal and vertical control by USGS, USCGS and USCE. Photography field annotated 1954. Limited revision by U.S. Geological Survey 1962.

LEGEND
ROAD DATA 1954. PARTIALLY REVISED 1962
Figures in red denote approximate distances in miles between stars

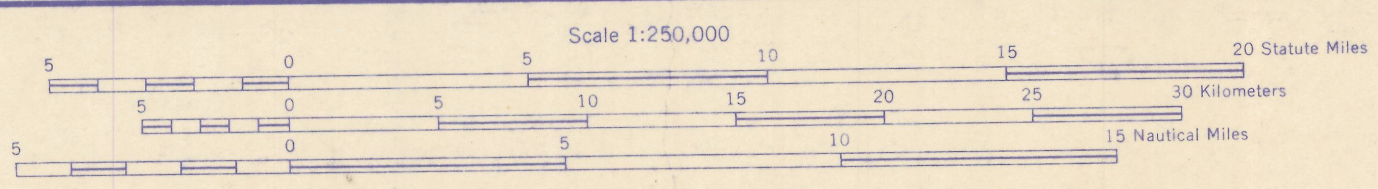
POPULATED PLACES
Over 500,000
100,000 to 500,000
25,000 to 100,000
5,000 to 25,000
1,000 to 5,000
Less than 1,000

RAILROADS
Standard gauge
Narrow gauge
International
State
County
Park or reservation

ROADS
Hard surface, heavy duty
More than two lanes wide
Two lanes wide, Federal route marker
Hard surface, medium duty
More than two lanes wide
Two lanes wide, State, Interstate route markers
Improved light duty
Unimproved dirt
Trail

LANDMARKS
School, Church, Other
Spot elevation in feet
Marsh or swamp
Intermittent or dry stream
Power line

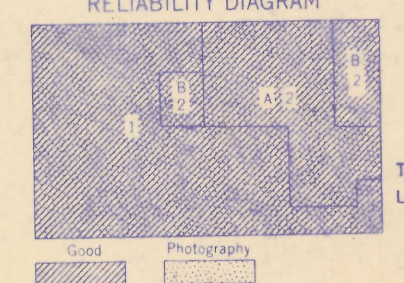
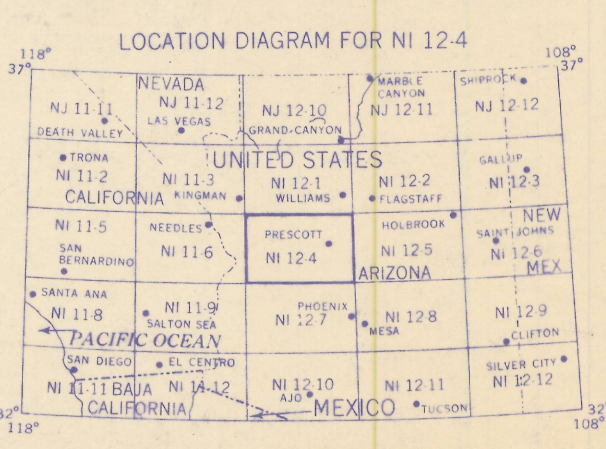
BOUNDARIES
Landplane airport
Landing area
Seaplane airport
Seaplane anchorage
Woods-brushwood
Approximate road alignment



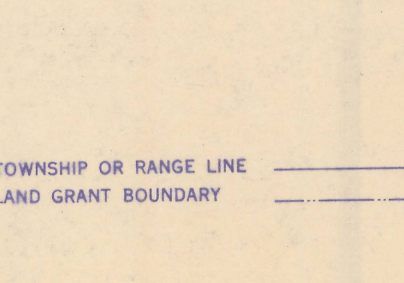
CONTOUR INTERVAL 200 FEET
WITH SUPPLEMENTARY CONTOURS AT 100 FOOT INTERVALS
TRANSVERSE MERCATOR PROJECTION

1960 MAGNETIC DECLINATION FOR THIS SHEET VARIES FROM 1°43' EASTERLY FOR THE CENTER OF THE WEST EDGE TO 1°15' EASTERLY FOR THE CENTER OF THE EAST EDGE. MEAN ANNUAL CHANGE IS 0'01" WESTERLY.

FOR SALE BY U.S. GEOLOGICAL SURVEY, DENVER, COLORADO 80225 OR WASHINGTON, D.C. 20242



Good
Fair
Poor
Photography



6	5	4	3	2	1
7	8	9	10	11	12
13	14	15	16	17	18
19	20	21	22	23	24
25	26	27	28	29	30
31	32	33	34	35	36

PRESCOTT, ARIZONA
1954
LIMITED REVISION 1962