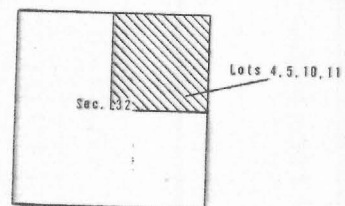


Contour Interval 10

INDEX MAP



1" = 400'



HEINRICHS GEOEXPLORATION COMPANY POST OFFICE BOX 8671, TUCSON, ARIZONA, 85703 Phone: 602/623-9578 Cable: GEOEX, Tucson	
Geological engineers geophysical engineers hydrogeologists	Tucson Sydney J.O.D. No. 188
GEOCHEMICAL SURVEY of LOTS 4, 5, 10 & 11 SECTION 32, T. 13 S. R. 12 E PIMA COUNTY, ARIZONA COPPER IN PARTS PER MILLION FOR RICHARD M. GERHART	
SCALE 1" = 200' DRAWN BY D.F. DATE March, 1970	