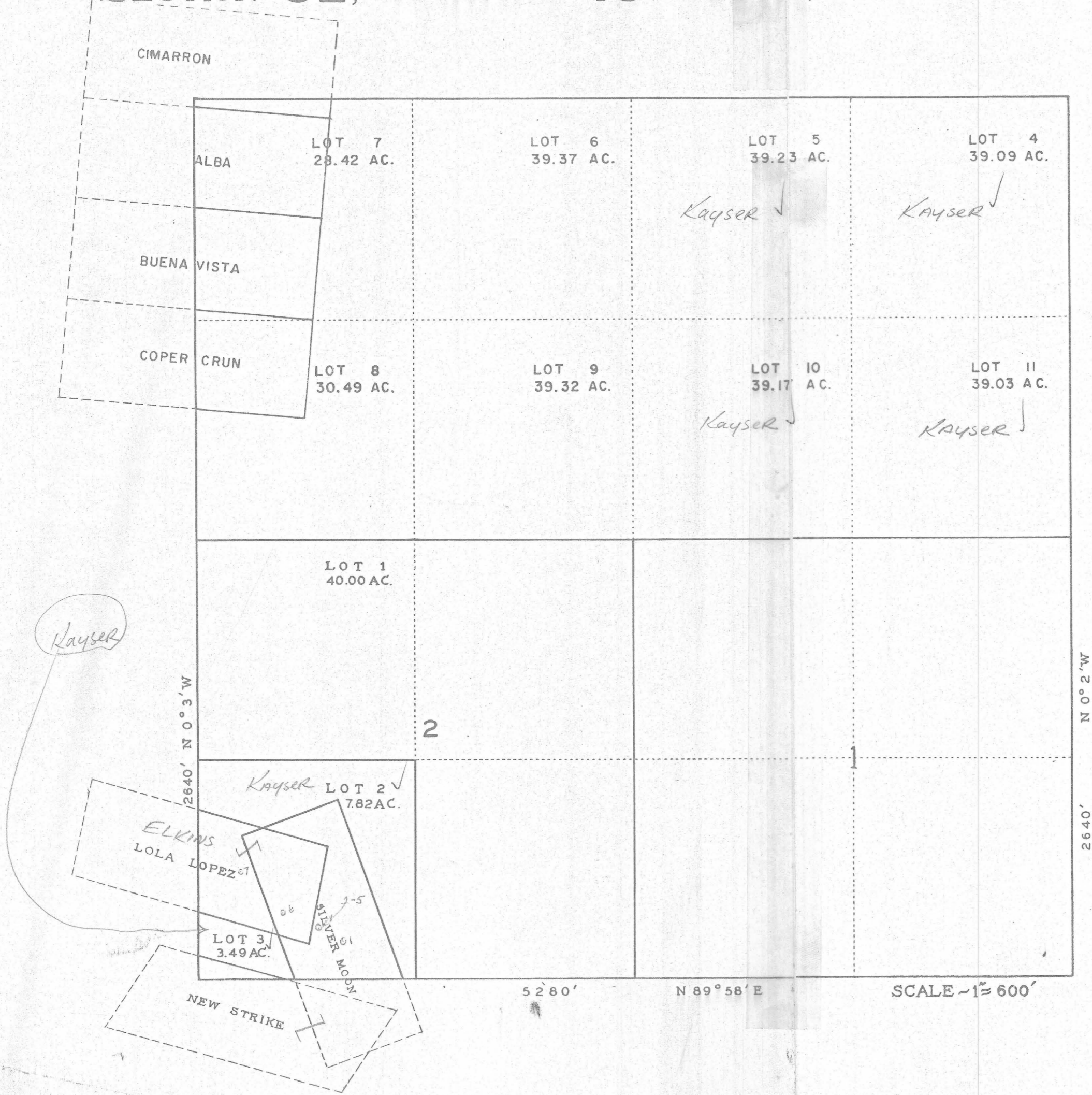


SECTION 32, TOWNSHIP 13 SOUTH, RANGE 12 EAST



U.S. LAND -----
 STATE LAND -----
 ROADS -----
 R.R., R. OF W. -----
 PAT. MINERAL CLAIMS -----
 SUBDIVISIONS -----

ACREAGE ASSESSED IN THIS BOOK

IRRIGATED -----
 IRRIGABLE -----
 DRY FARM -----
 DRY LAND -----
 GRAZING -----
 WASTE -----
 DESERT HOMESTEAD -----
 SUBURBAN -----
 CANALS -----
 WELLSITES -----
 SAND PITS -----
 ACREAGE ASSESSED -----
 TOTAL ACREAGE -----

Return to
Elkins