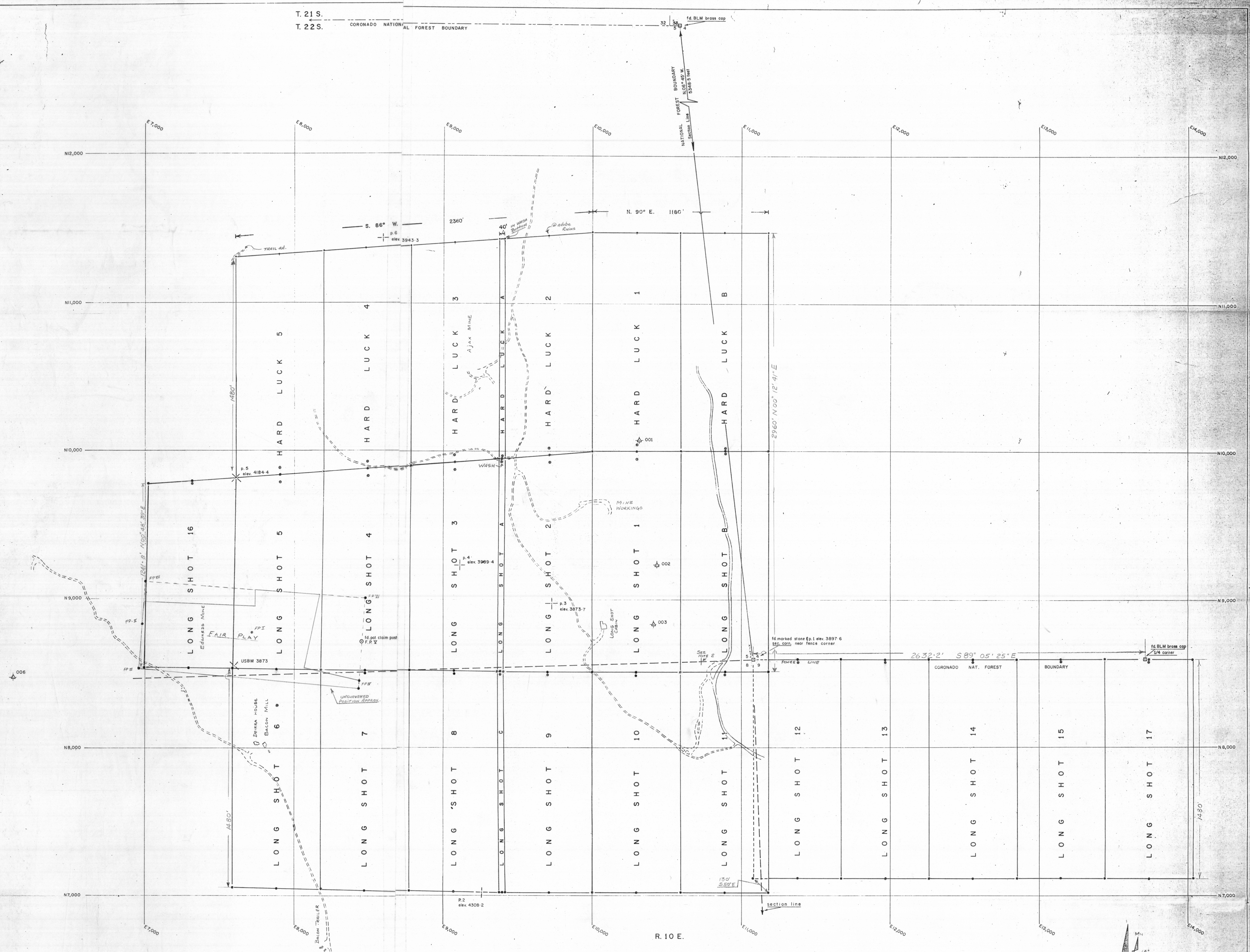


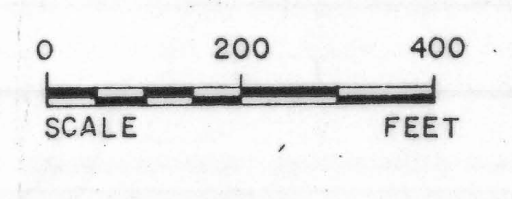
T. 21 S.
T. 22 S. CORONADO NATIONAL FOREST BOUNDARY



EXPLANATION

- ▲ Survey Control
 - ⊕ Photo Control & Elev. in Feet
 - ⊕ Section Corner
 - Improved Road
 - - - Unimproved Road
 - ⊕ CLAIM CORNER
 - ⊕ CLAIM LOCATION MONUMENT
 - END CENTER CLAIM MONUMENT
- Note 1: ROADS ARE IN THEIR APPROXIMATE LOCATION & HAVE NOT BEEN SURVEYED.
- Note 2: Sec. CORNER 214 IS APPROX. 350' SW of the PLATTED & ASSUMED POSITION IN THE U.S.G.S. ARIZONA QUAD TOPO. MAP DATED 1970.

AZ MAP LOCATION



CREDITS FOR INFORMATION		compiled
Instr. M. Stoll of Stitzer & Johnson	map rev.	Dec. 1983
Field Tech: D. Beckett	1/16/84	
Aerophoto: Cooper Aerial Surveys 12-14-83		
8-90 CLAIMS RELOCATED MAY 1990	8-29-90	
	9-18-90	
Checked: E.G.H.	Approved: _____	
Date: _____		

CLAIM MAP
for
THE SBSB GROUP
AJAX MINE AREA
Pima County, Arizona

Compiled By
E. Grover Heinrichs & Associates