

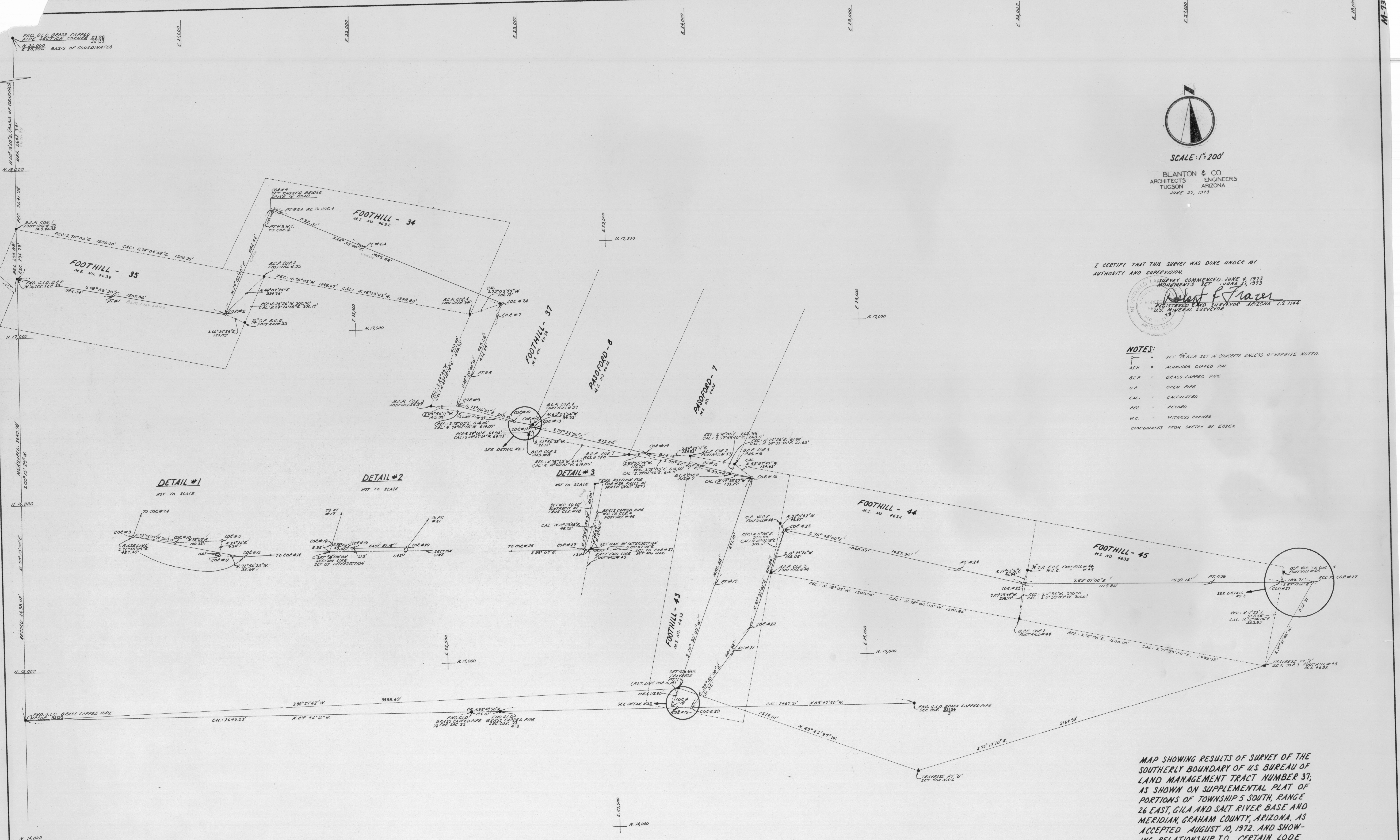
SCALE: 1"=200'

BLANTON & CO.
ARCHITECTS ENGINEERS
TUCSON ARIZONA
JUNE 27, 1973

I CERTIFY THAT THIS SURVEY WAS DONE UNDER MY
AUTHORITY AND SUPERVISION.

SURVEY COMMENCED: JUNE 3, 1973
MONUMENTS SET: JUNE 21, 1973
Robert E. Tracer
REGISTERED LAND SURVEYOR ARIZONA L.S. 1144
U.S. MINERAL SURVEYOR

- NOTES:**
- SET 7/8" A.C.P. SET IN CONCRETE UNLESS OTHERWISE NOTED.
 - ACP = ALUMINUM CAPPED PIN
 - B.C.P. = BRASS-CAPPED PIPE
 - O.P. = OPEN PIPE
 - CAL. = CALCULATED
 - REC. = RECORDED
 - W.C. = WITNESS CORNER
 - COORDINATES FROM SKETCH BY ESSEX



DETAIL #1
NOT TO SCALE

DETAIL #2
NOT TO SCALE

DETAIL #3
NOT TO SCALE

MAP SHOWING RESULTS OF SURVEY OF THE
SOUTHERLY BOUNDARY OF U.S. BUREAU OF
LAND MANAGEMENT TRACT NUMBER 37;
AS SHOWN ON SUPPLEMENTAL PLAT OF
PORTIONS OF TOWNSHIP 5 SOUTH, RANGE
26 EAST, GILA AND SALT RIVER BASE AND
MERIDIAN, GRAHAM COUNTY, ARIZONA, AS
ACCEPTED AUGUST 10, 1972. AND SHOWING
RELATIONSHIP TO CERTAIN LODE
CLAIM CORNERS OF MINERAL SURVEY
NUMBER 4632. SURVEYED UNDER AUTHORITY
OF DOCUMENT NUMBER CIV 72-
204 TUC OF THE UNITED STATES DISTRICT
COURT, DISTRICT OF ARIZONA.