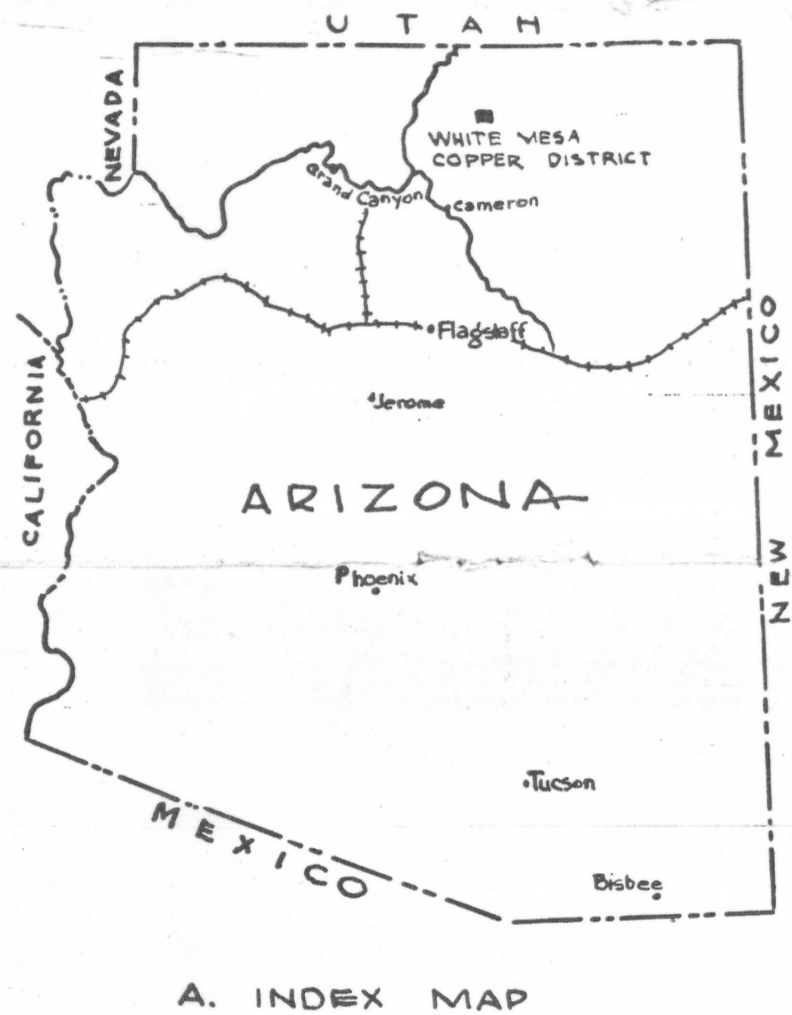
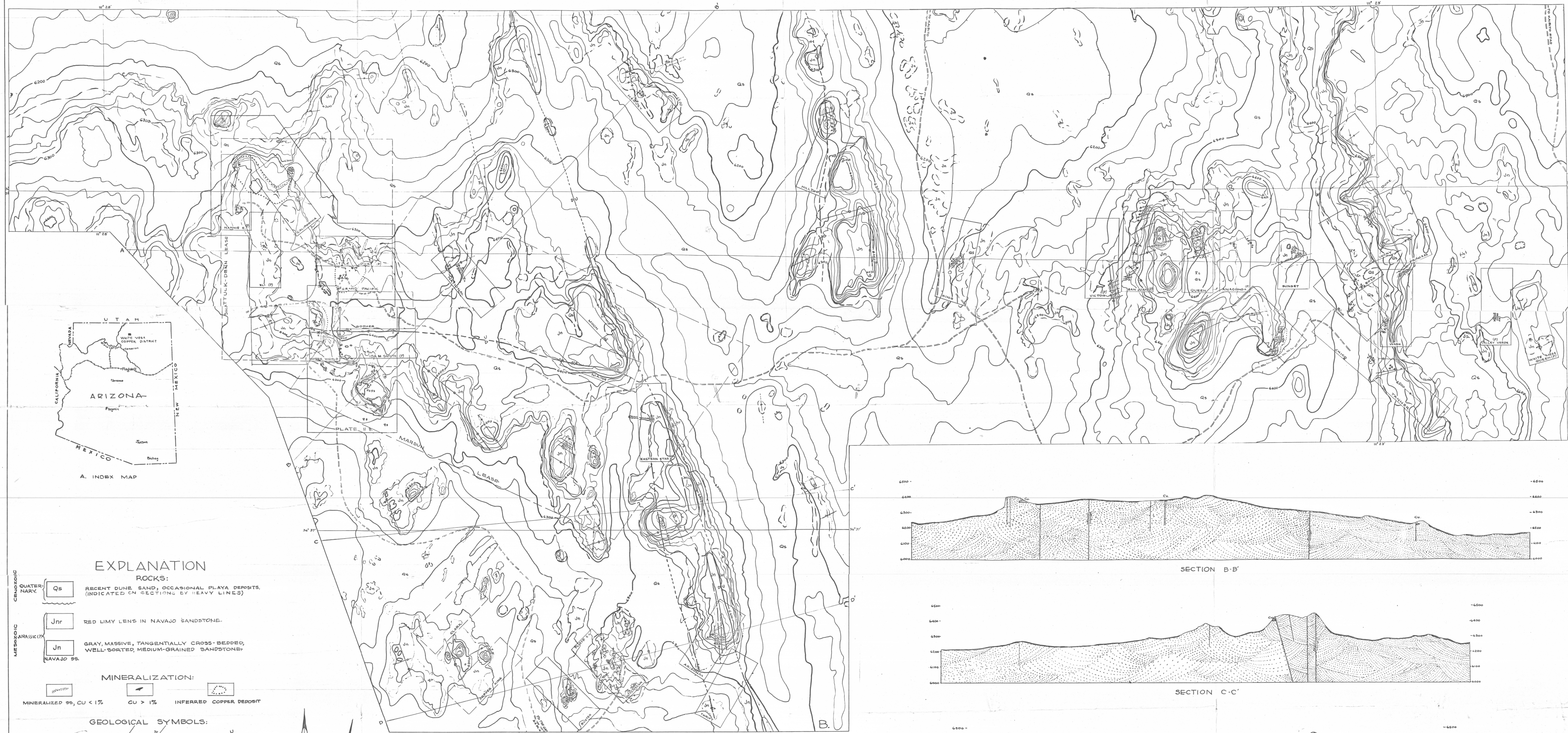


SECTION A-A'



A. INDEX MAP

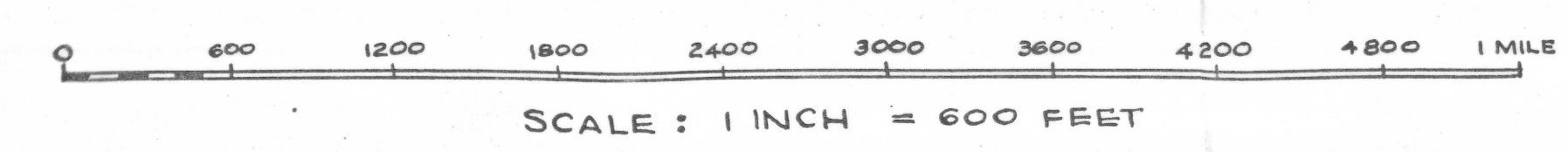
EXPLANATION

- ROCKS:**
- QUATERNARY:** Qs RECENT DUNE SAND, OCCASIONAL PLAYA DEPOSITS. (INDICATED ON SECTIONS BY HEAVY LINES)
  - MESOSAURIC:** Jnr RED LIMY LENS IN NAVAJO SANDSTONE.  
Jn GRAY, MASSIVE, TANGENTIALLY CROSS-BEDDED, WELL-SORTED, MEDIUM-GRAINED SANDSTONE-NAVAJO SS.
- MINERALIZATION:**
- MINERALIZED SS, CU < 1%
  - CU > 1%
  - INFERRED COPPER DEPOSIT
- GEOLOGICAL SYMBOLS:**
- CONTACTS
  - MAJOR JOINT FISSURES
  - FAULT FISSURES
- WORKINGS:**
- ABANDONED PROSPECT WITH ORE SHOWING
  - WITHOUT ORE
  - OPEN CUTS
  - ADIT
- CULTURE:**
- UNPATENTED
  - APPROXIMATE POSITION
  - PATENTED
- CLAIMS:**
- MINING OR PROSPECTING LEASE
  - BOUNDARY OF DETAILED AREAS
  - SECONDARY ROAD
  - BUILDING
  - TRIANGULATION POINT
  - U.S.L.M.

UNITED STATES DEPARTMENT OF THE INTERIOR, GEOLOGICAL SURVEY

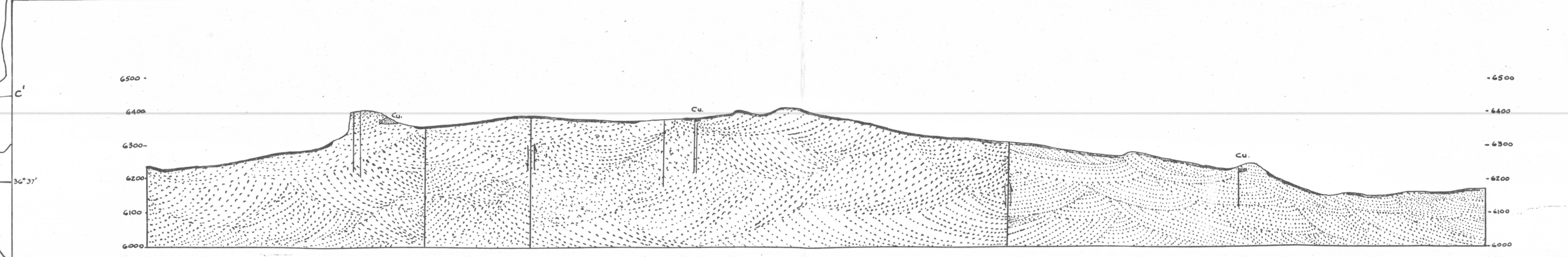
GEOLOGY and TOPOGRAPHY of the WHITE MESA COPPER DISTRICT COCONINO COUNTY, ARIZONA

BY C. B. READ, R. D. SAMPLE, & H. H. SULLWOLD, JR.

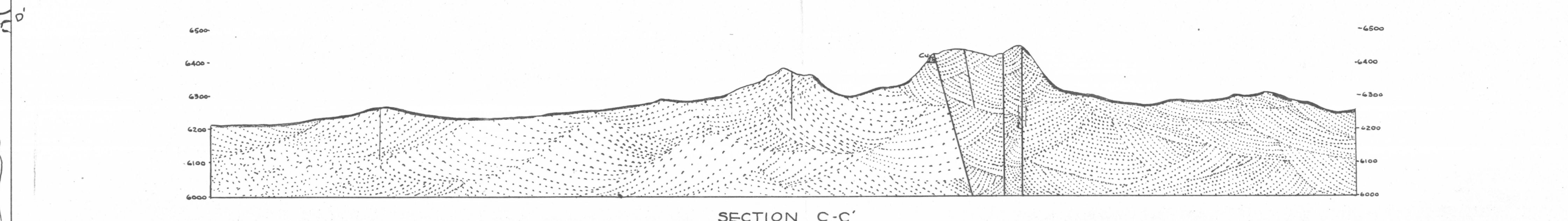


SCALE: 1 INCH = 600 FEET  
CONTOUR INTERVAL 20 FEET  
DATUM APPROXIMATELY MEAN SEA LEVEL

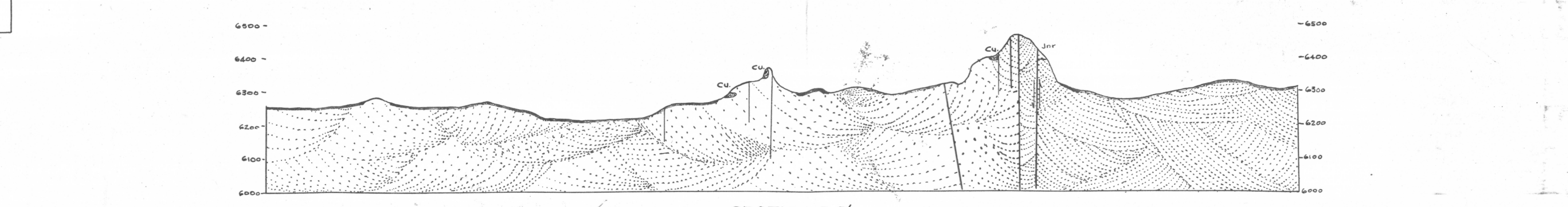
1943



SECTION B-B'



SECTION C-C'



SECTION D-D'  
GEOLOGIC SECTIONS

HORIZONTAL SCALE SAME AS MAP; VERTICAL SCALE X 3