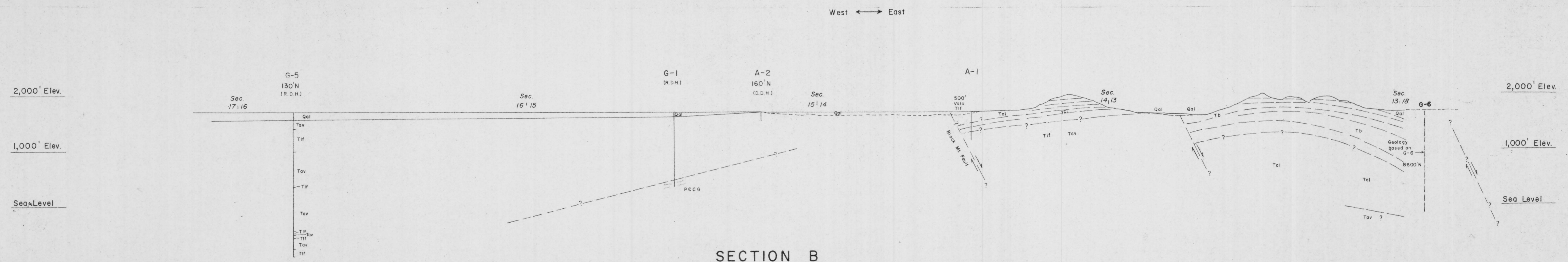
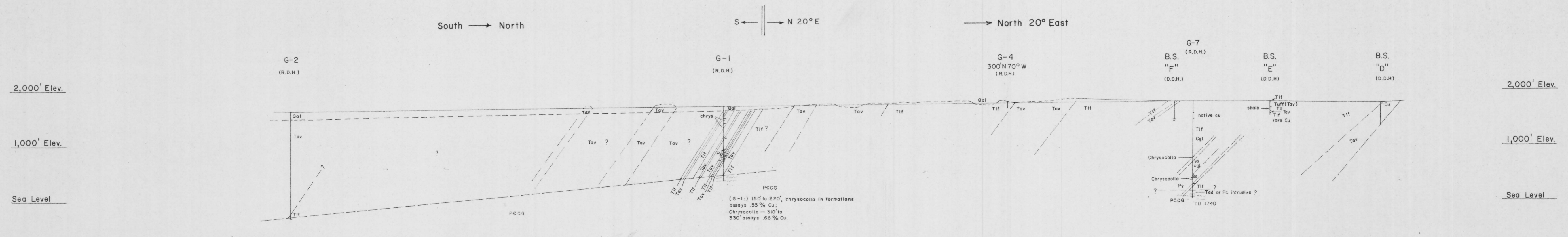


SECTION A
 (From section cor 22-23-27-26 to section cor 2-3-34-35)

Drawn by J.D. Lowell & J.D. Loghry



SECTION B



SECTION C

GOING SOUTH PROJECT
AJO, ARIZONA

J. DAVID LOWELL CONSULTING GEOLOGIST
 5215 NORTH ORACLE ROAD, TUCSON, ARIZONA

DRAWN BY: J. D. Loghry DATE: MAY, 1967.

GEOLOGY BY: J. D. Lowell SURVEY: _____

SCALE: 1" = 1000'