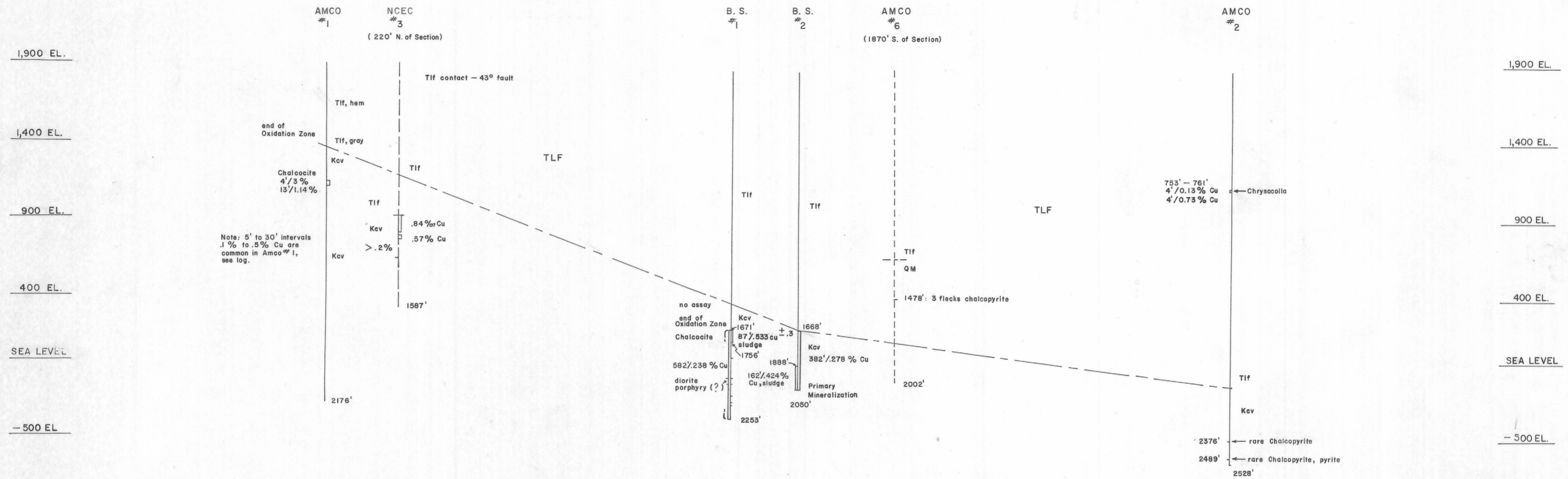
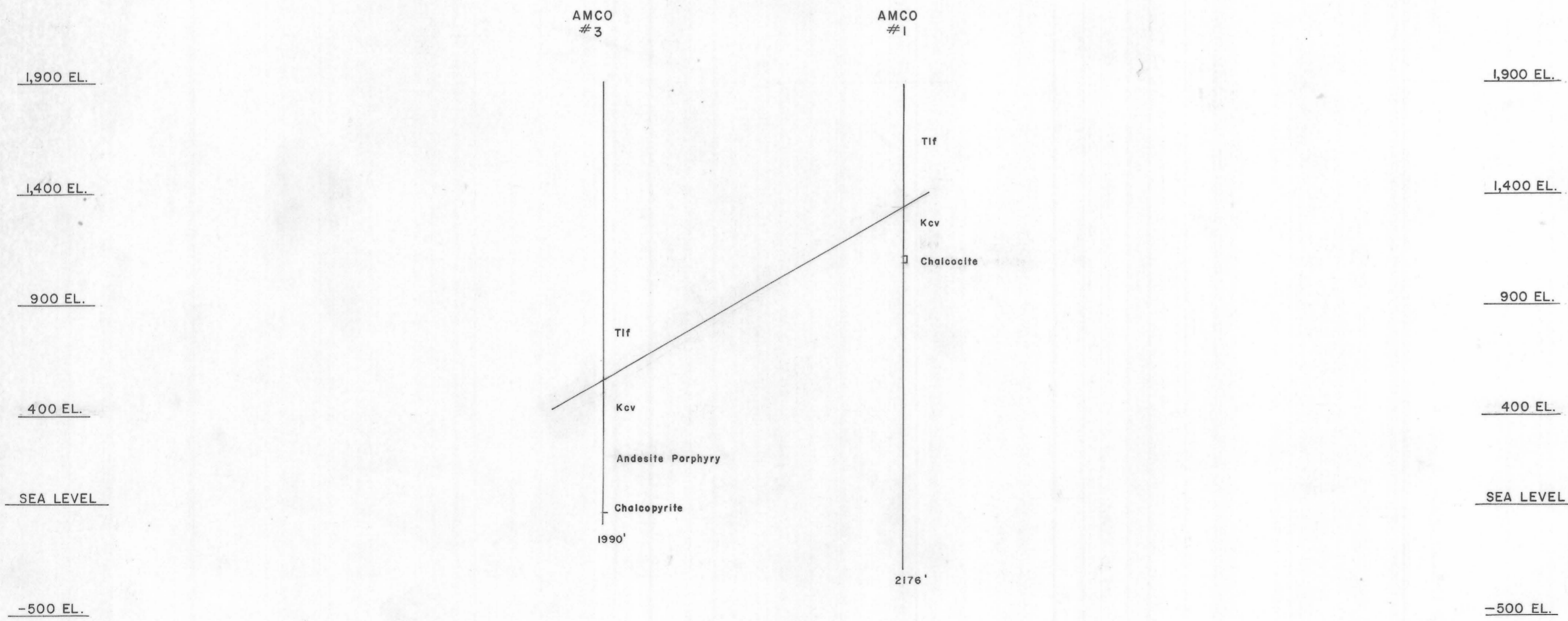


SECTION D
North 83° West Cross Section



Note: 5' to 30' intervals .1% to .5% Cu are common in Amco #1, see log.

SECTION E
North 7° East Cross Section



GOING SOUTH PROJECT - AJO, ARIZONA
AMCO & BLUESTONE
DIAMOND DRILL HOLES

J. DAVID LOWELL CONSULTING GEOLOGIST
5215 NORTH ORACLE ROAD, TUCSON, ARIZONA

DRAWN BY: J.D. Lohry DATE: Nov., 1966

GEOLOGY BY: J.D. Lohry SURVEY: _____

SCALE: 1" = 500'