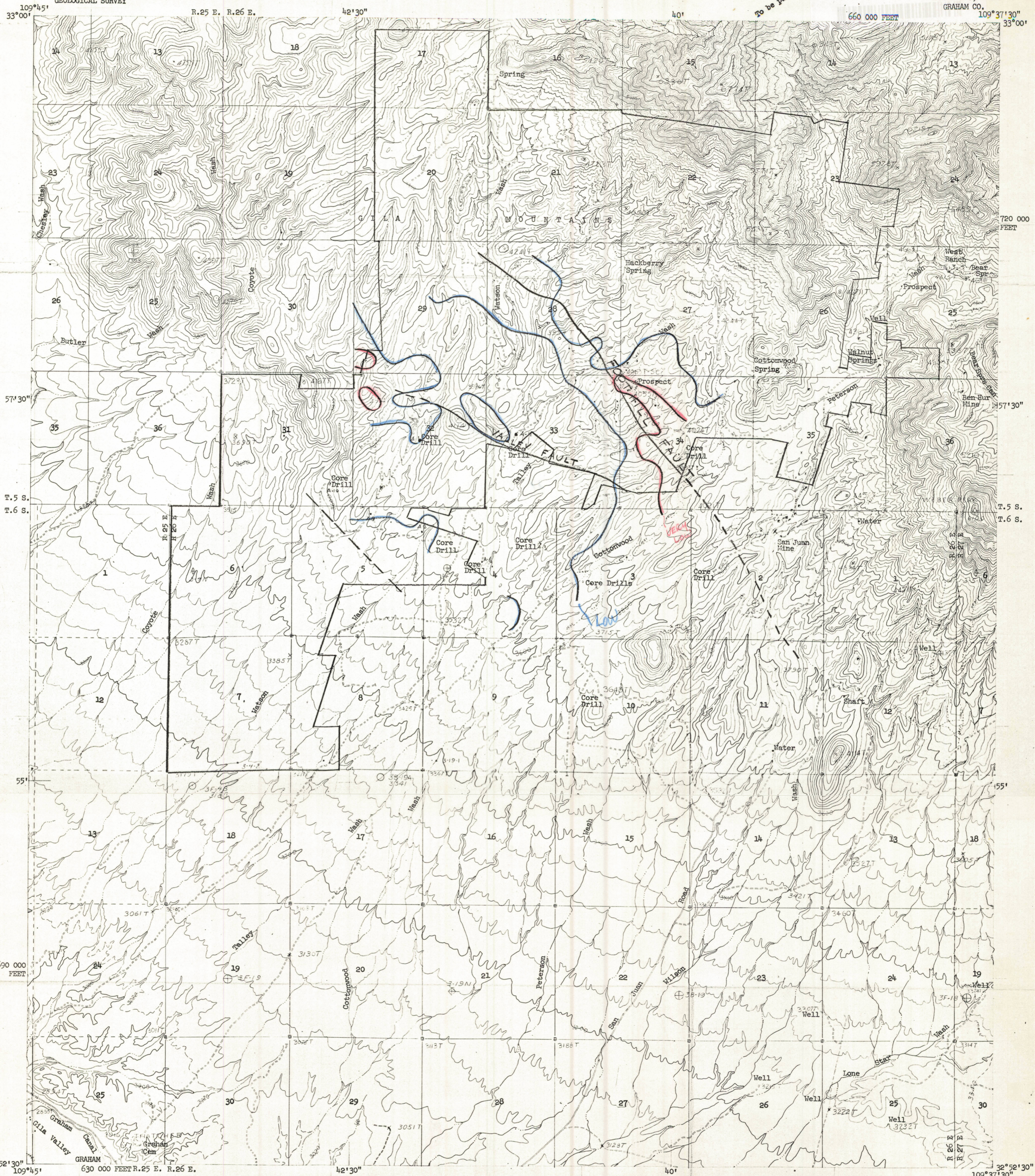


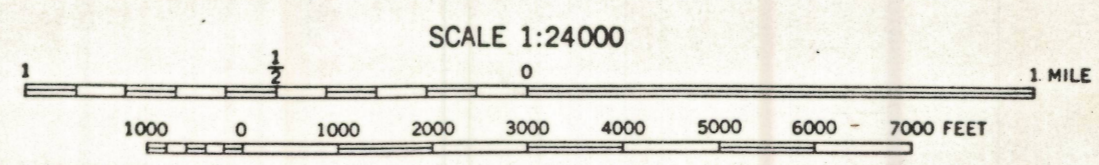
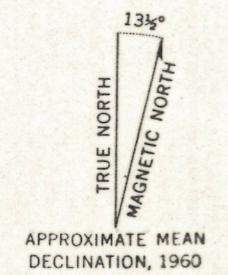
Advance Sheet
Subject to correction
To be published at 1:62500 scale

UNITED STATES
DEPARTMENT OF THE INTERIOR
GEOLOGICAL SURVEY

SAFFORD NW., ARIZ.
GRAHAM CO.



Mapped by Pacific Area, Geological Survey
This is an unedited copy of an original manuscript including field additions made in 1960



CONTOUR INTERVAL 40 FEET
DATUM IS MEAN SEA LEVEL

RESISTIVITY - JOHN SUMNER

"Resistivity lows seem to occur along faults"

SAFFORD NW., ARIZ.
GRAHAM CO.

Safford Project