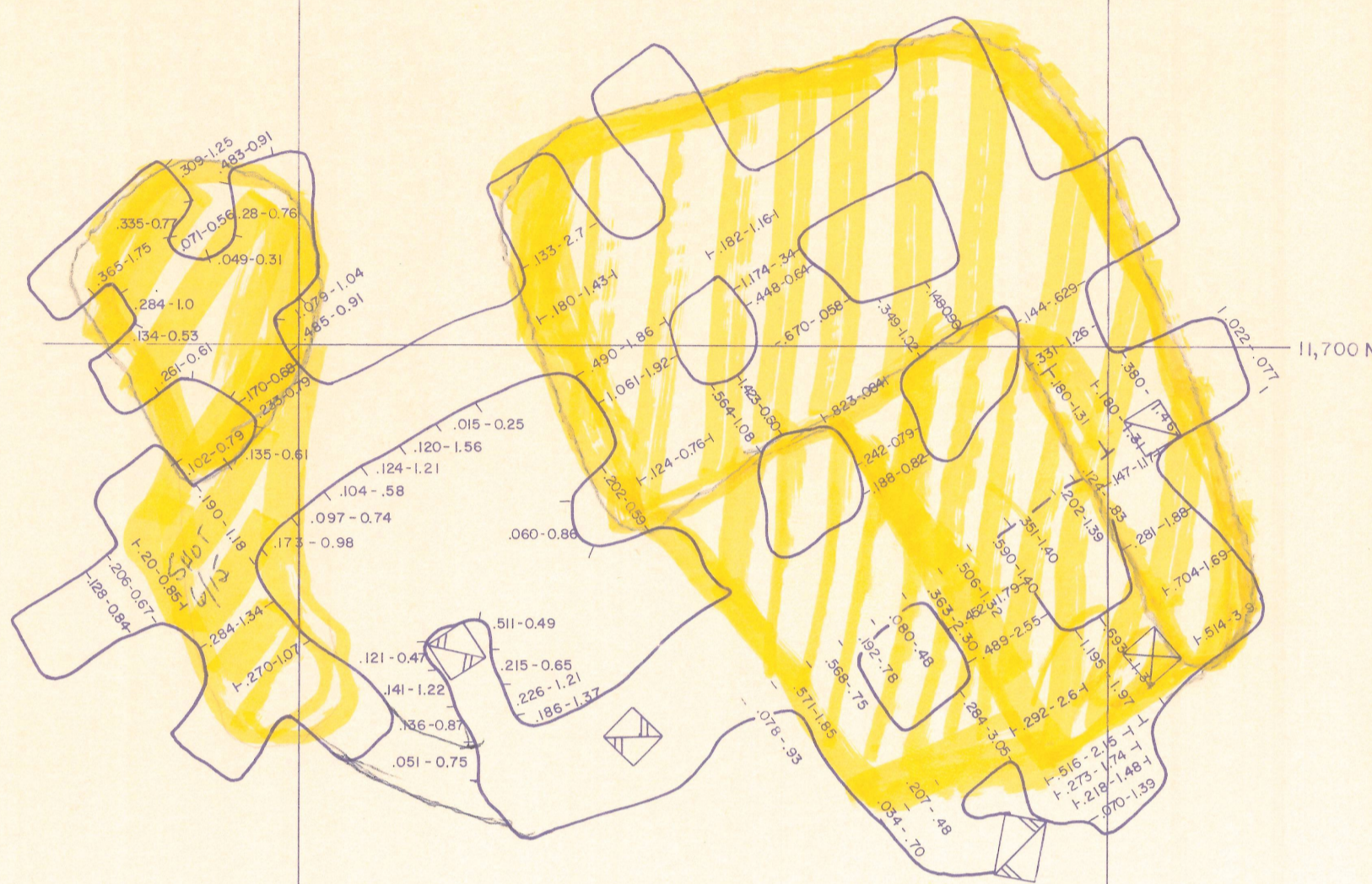


**800 LEVEL**

4335' Elevation  
(at survey point 80)

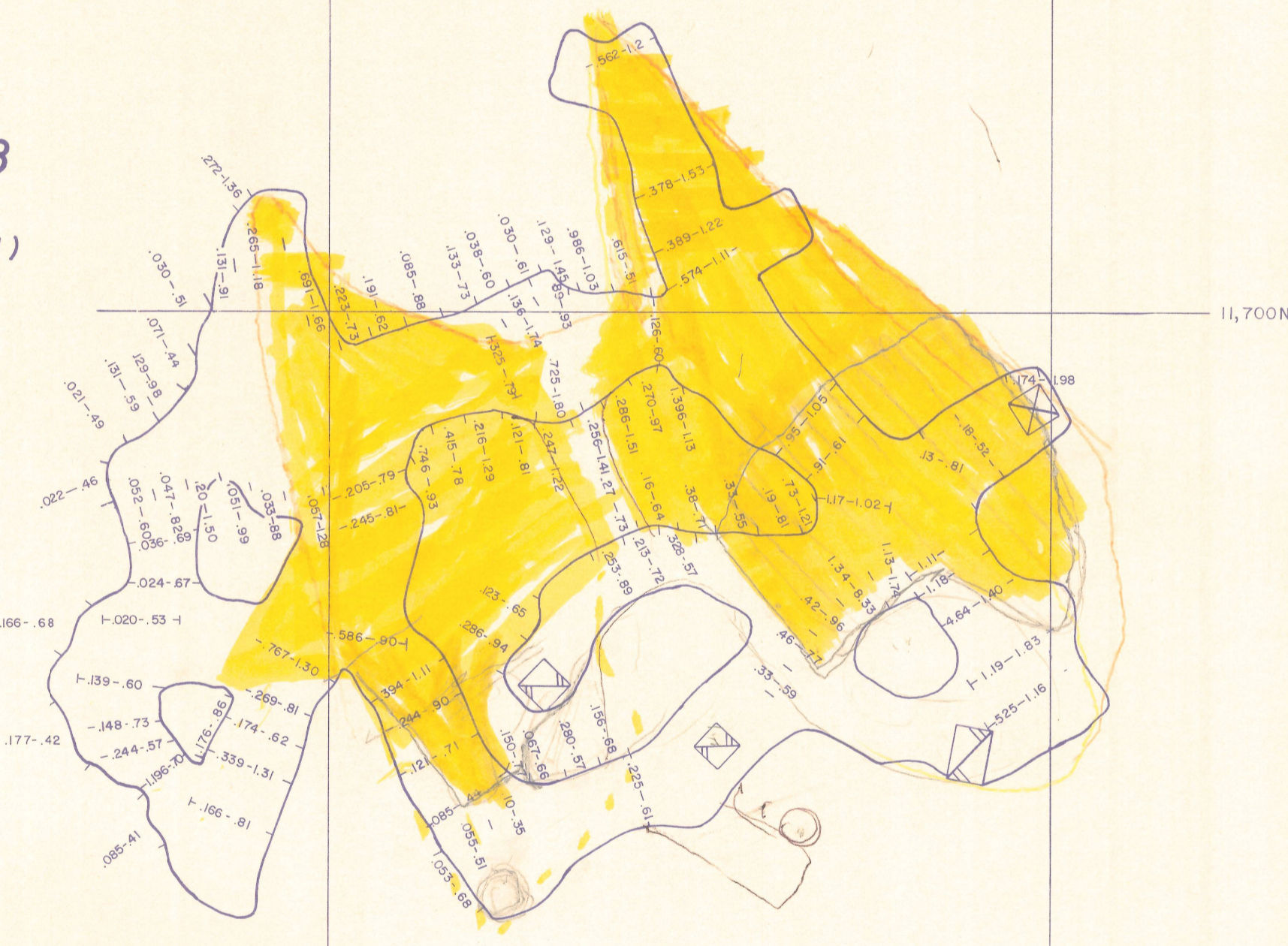
**SUBLEVEL C**

4306' Elevation  
(at survey point 9C-2)



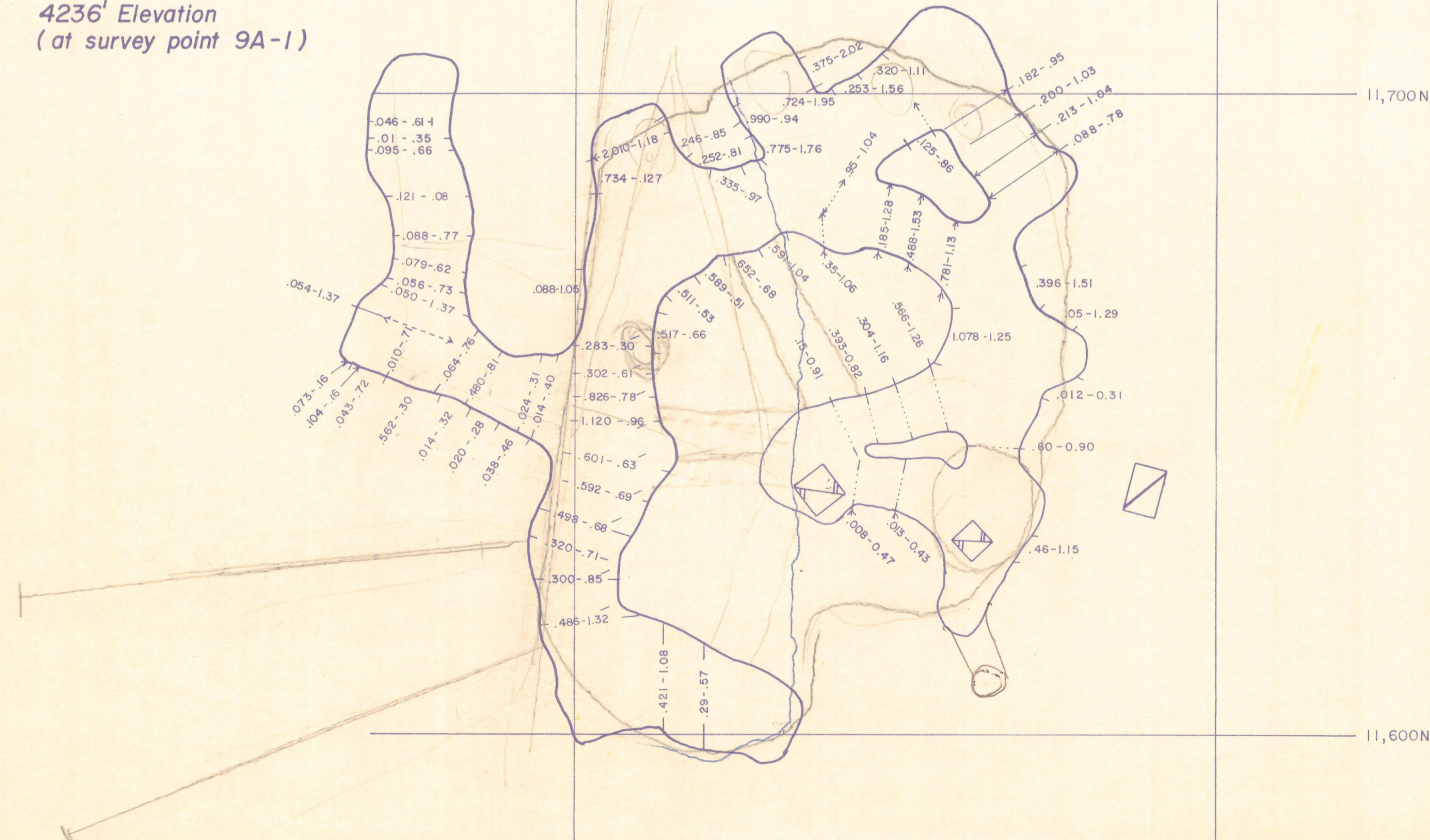
**SUBLEVEL B**

4270' Elevation  
(at survey point 9B-1)



**SUBLEVEL A**

4236' Elevation  
(at survey point 9A-1)

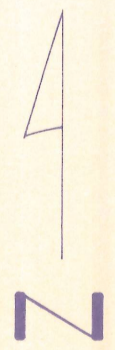


Explanation

Channel Sample  
oz. Au/ton - oz. Ag/ton

Assay Contours

- > 0.25 o.p.t. Au (ore)
- > 0.10 o.p.t. Au
- Assay Contour, dashed outside of workings



20 0 20 40 FEET

|                                    |                   |  |
|------------------------------------|-------------------|--|
| <b>A.F. BUDGE (MINING) LIMITED</b> |                   |  |
| UVX MINE                           |                   |  |
| 900 Orebody                        |                   |  |
| <b>LEVEL MAPS-ASSAYS</b>           |                   |  |
| Scale: 1" = 20 Feet                | By: J.A. McKenney | Date: 12/89<br>Drafting: Graphic Harmony |