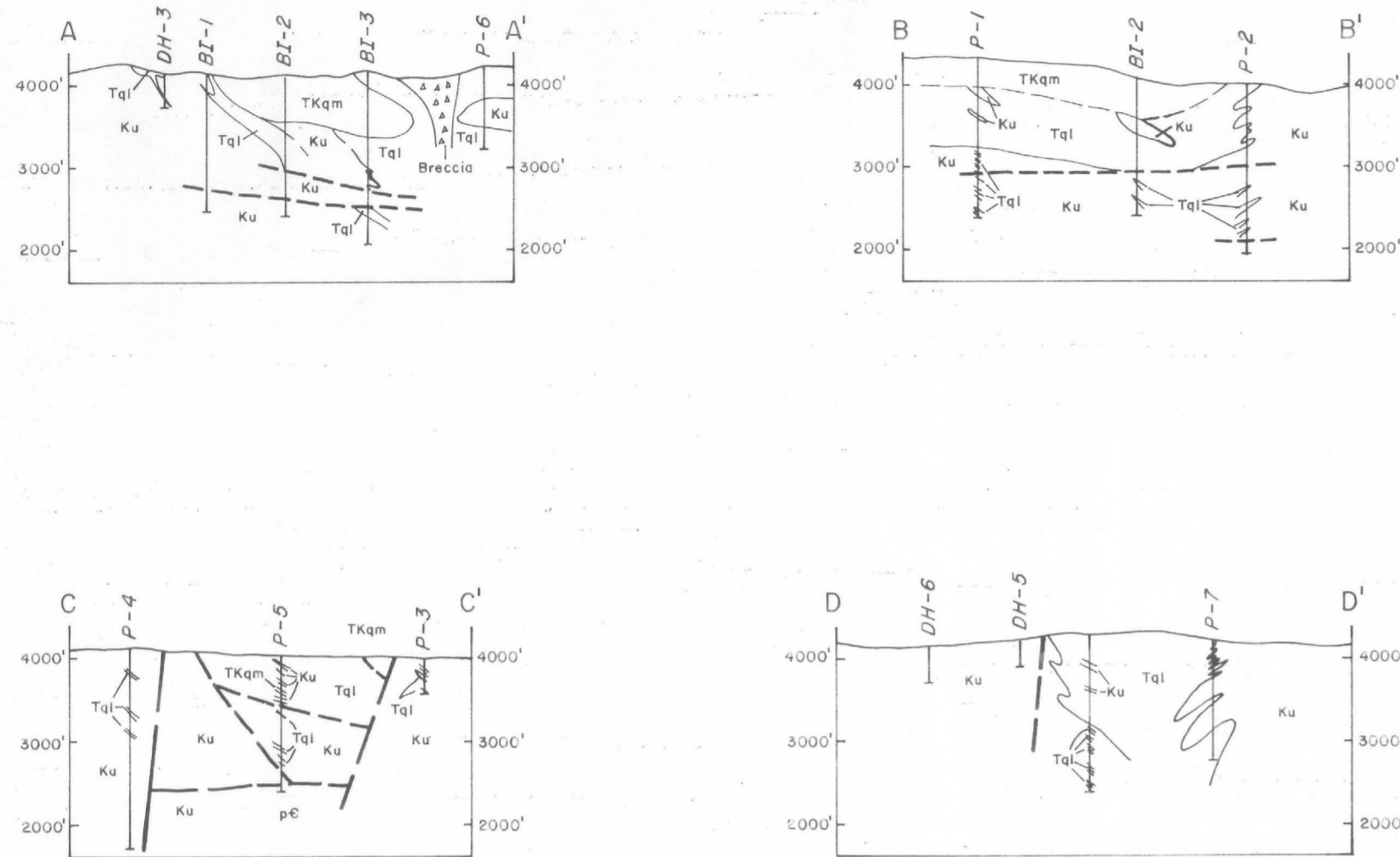


GEOLOGIC CROSS SECTIONS



- Tq1 Quartz latite porphyry
- TKqm Monzonite porphyry
- Ku Cretaceous sediments (undivided)
- pE Rincon Valley Granite

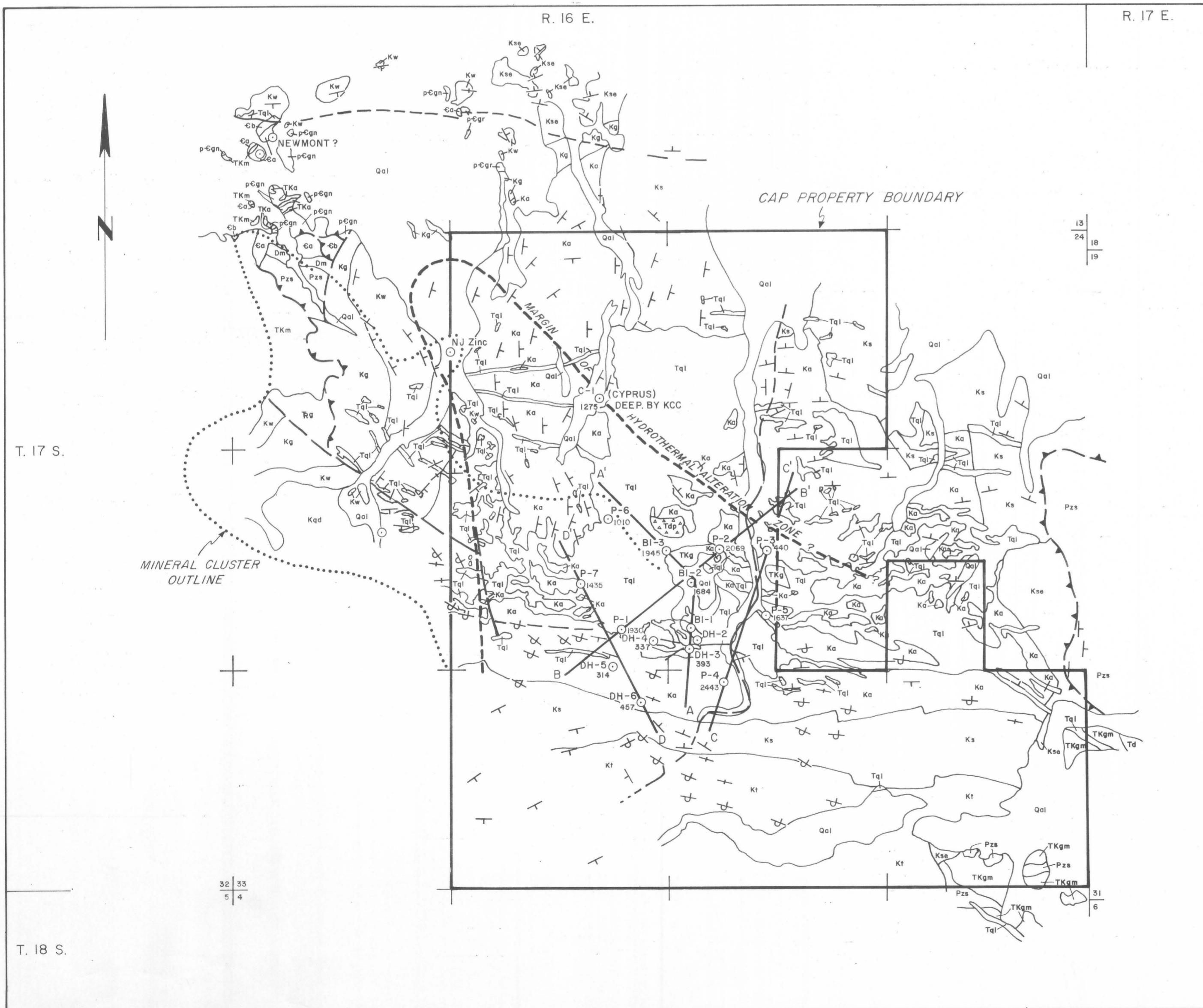
NOTE: For 200-scale cross sections see Pauline Project Final Report (December 1981)

EXPLANATION

- | | |
|-------------------------|--|
| QUATERNARY | Qal Alluvium |
| | Tq1 Porphyry intrusive rocks (Laramide Age), undifferentiated |
| TERTIARY | TKa TKm TKg TKgm |
| | TKm - Western quartz monzonite |
| | TKa - Aplite |
| | Middle quartz monzonite |
| UPPER CRETACEOUS | Kqd Quartz diorite |
| | Kse Salera Formation |
| | Kt Turney Ranch Formation |
| | Ks Shellenberger Canyon Formation |
| | Ka Apache Canyon Formation |
| | Kw Willow Canyon Formation |
| | Kg Glance Conglomerate |
| | Rg Gardner Canyon Formation |
| | Pzs Limestone, undifferentiated |
| | Dm Martin Formation |
| LOWER CRETACEOUS | Ca Abrigo Formation |
| | Cb Bolsa Quartzite |
| | pCgr Muscovite gneissic granite |
| MISSISSIPPIAN - PERMIAN | pEgn Quartz diorite and quartz monzonite gneiss |
| | pEgn Quartz diorite and quartz monzonite gneiss |
| TRIASSIC | pEgn Quartz diorite and quartz monzonite gneiss |
| | pEgn Quartz diorite and quartz monzonite gneiss |
| DEVONIAN | pEgn Quartz diorite and quartz monzonite gneiss |
| | pEgn Quartz diorite and quartz monzonite gneiss |
| CAMBRIAN | pEgn Quartz diorite and quartz monzonite gneiss |
| | pEgn Quartz diorite and quartz monzonite gneiss |
| PRECAMBRIAN | pEgn Quartz diorite and quartz monzonite gneiss |
| | pEgn Quartz diorite and quartz monzonite gneiss |

SYMBOLS

- ▲▲▲▲ Breccia
- Fault
- ▲▲▲▲ Low angle fault (saw teeth on upper plate)
- Strike and dip of beds
- Strike and dip of overturned beds



GEOLOGIC MAP
 PAULINE PROJECT
 (CAP No. 147-180)
 PIMA CO., ARIZONA
 PILLAR, LOWELL & ASSOCIATES, OPERATORS

