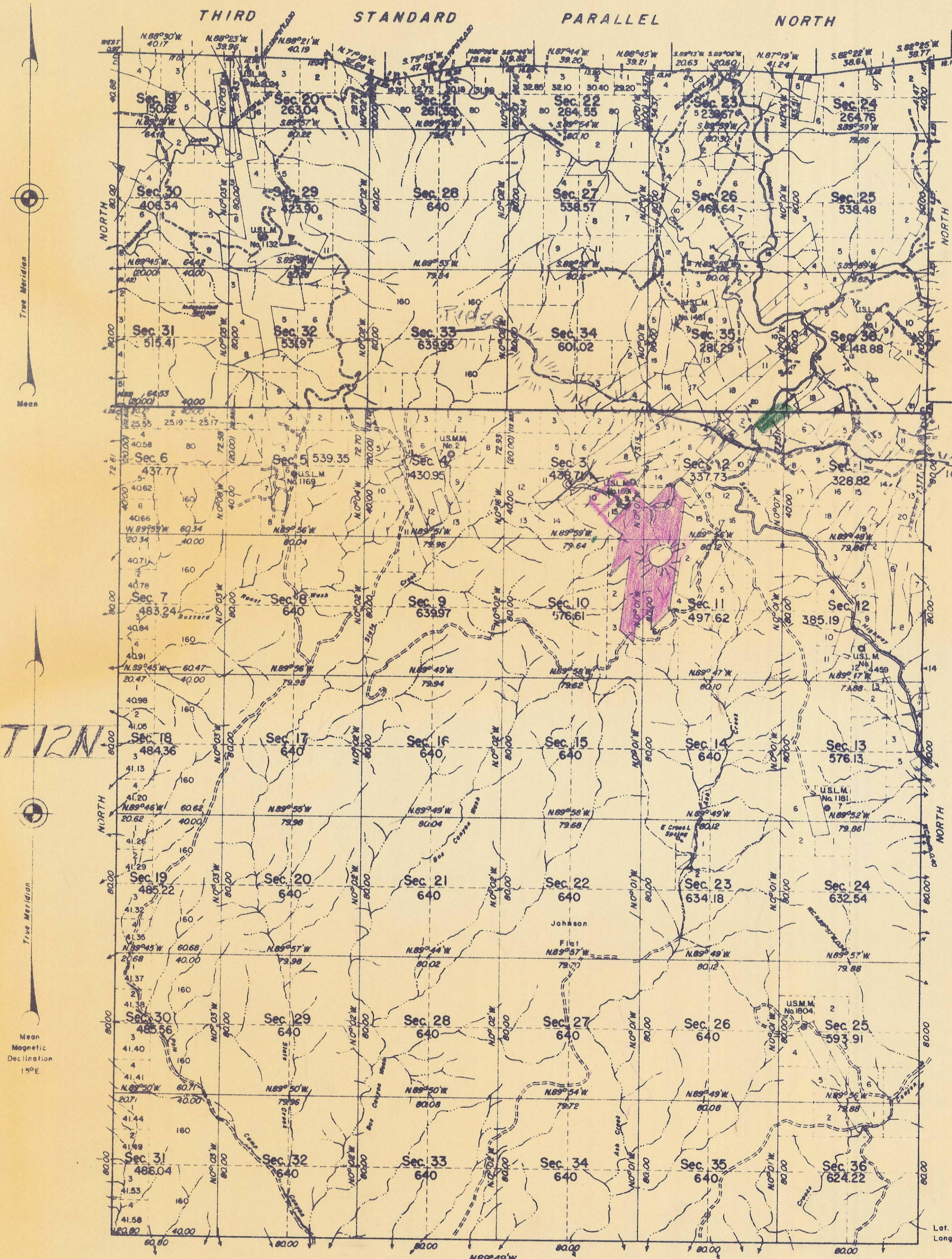


TOWNSHIP 12 1/2 NORTH, RANGE 2 WEST, OF THE GILA AND SALT RIVER MERIDIAN, ARIZONA.

THIRD STANDARD PARALLEL NORTH



Lat. 34°25'07.8"N  
Long. 112°24'48.2"W

Sec. 2	Sheet 3
Sec. 3	Sheet 4
Sec. 4 and 9	Sheet 5
Sec. 5	Sheet 6
Secs. 10 and 11	Sheet 7
Sec. 12	Sheet 8
Secs. 13 and 24	Sheet 9
Sec. 23	Sheet 10
Secs. 25 and 36	Sheet 11

A history of earlier surveys is contained in the field notes.

This plat (consisting of 11 sheets) represents a dependent resurvey of a portion of the south boundary of T. 12 N., R. 2 W., and a survey of the north boundary and subdivision lines of T. 12 N., R. 2 W., Gila and Salt River Meridian, Arizona, executed by Leonard W. Murphy, Cadastral Surveyor, from July 18, 1962, to November 27, 1962, under Special Instructions dated November 18, 1958, for Group No. 331, Arizona.

UNITED STATES  
DEPARTMENT OF THE INTERIOR  
BUREAU OF LAND MANAGEMENT  
Washington, D. C.  
September 27, 1968

This plat is strictly conformable to the approved field notes, and the survey, having been correctly executed in accordance with the requirements of law and the regulations of this Bureau, is hereby accepted.

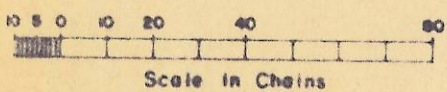
For the Director

*R.E. Brown*

Chief, Division of Engineering

Lat. 34°19'54"N  
Long. 112°24'55"W

Area Surveyed 20,338.12 Acres



Scale in Chains

T12N

Mean Magnetic Declination 15°E