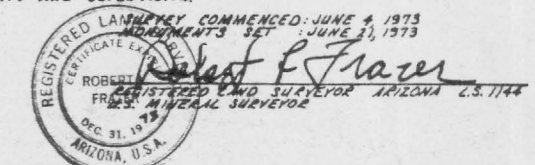




SCALE: 1"=200'

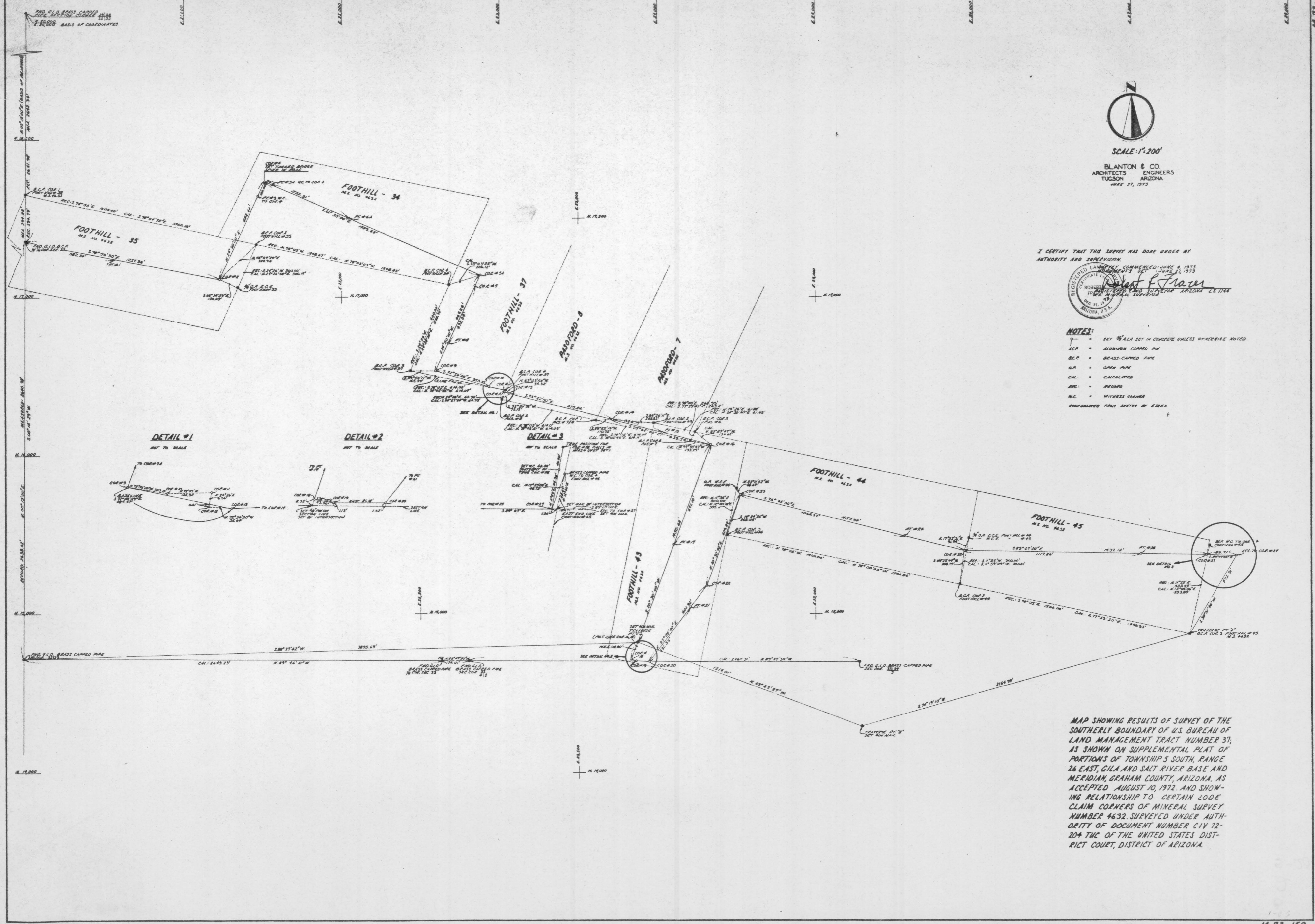
BLANTON & CO.  
ARCHITECTS ENGINEERS  
TUCSON ARIZONA  
JUNE 27, 1973

I CERTIFY THAT THIS SURVEY WAS DONE UNDER MY  
AUTHORITY AND SUPERVISION.



NOTES:

- SET 3/4" ACP SET IN CONCRETE UNLESS OTHERWISE NOTED.
  - ACP = ALUMINUM CLIPPED PIPE
  - BCP = BRASS-CAPPED PIPE
  - O.P. = OPEN PIPE
  - CAL. = CALCULATED
  - REC. = RECORD
  - W.C. = WITNESS CORNER
- COORDINATES FROM SHEET BY LESSEX



MAP SHOWING RESULTS OF SURVEY OF THE  
SOUTHERLY BOUNDARY OF U.S. BUREAU OF  
LAND MANAGEMENT TRACT NUMBER 37;  
AS SHOWN ON SUPPLEMENTAL PLAT OF  
PORTIONS OF TOWNSHIP 3 SOUTH, RANGE  
26 EAST, GILA AND SALT RIVER BASE AND  
MERIDIAN, GRAHAM COUNTY, ARIZONA, AS  
ACCEPTED AUGUST 10, 1972, AND SHOWING  
RELATIONSHIP TO CERTAIN LODE  
CLAIM CORNERS OF MINERAL SURVEY  
NUMBER 4632, SURVEYED UNDER AUTH-  
ORITY OF DOCUMENT NUMBER CIV 72-  
204 TUC OF THE UNITED STATES DIST-  
RICT COURT, DISTRICT OF ARIZONA.