



CONTACT INFORMATION

Mining Records Curator
Arizona Geological Survey
1520 West Adams St.
Phoenix, AZ 85007
602-771-1601
<http://www.azgs.az.gov>
inquiries@azgs.az.gov

The following file is part of the

Arizona Department of Mines and Mineral Resources Mining Collection

ACCESS STATEMENT

These digitized collections are accessible for purposes of education and research. We have indicated what we know about copyright and rights of privacy, publicity, or trademark. Due to the nature of archival collections, we are not always able to identify this information. We are eager to hear from any rights owners, so that we may obtain accurate information. Upon request, we will remove material from public view while we address a rights issue.

CONSTRAINTS STATEMENT

The Arizona Geological Survey does not claim to control all rights for all materials in its collection. These rights include, but are not limited to: copyright, privacy rights, and cultural protection rights. The User hereby assumes all responsibility for obtaining any rights to use the material in excess of "fair use."

The Survey makes no intellectual property claims to the products created by individual authors in the manuscript collections, except when the author deeded those rights to the Survey or when those authors were employed by the State of Arizona and created intellectual products as a function of their official duties. The Survey does maintain property rights to the physical and digital representations of the works.

QUALITY STATEMENT

The Arizona Geological Survey is not responsible for the accuracy of the records, information, or opinions that may be contained in the files. The Survey collects, catalogs, and archives data on mineral properties regardless of its views of the veracity or accuracy of those data.

PRINTED: 03/14/2003

ARIZONA DEPARTMENT OF MINES AND MINERAL RESOURCES AZMILS DATA

PRIMARY NAME: RUMICO MILLSITE

ALTERNATE NAMES:

YAVAPAI COUNTY MILS NUMBER: 1375

LOCATION: TOWNSHIP 10 N RANGE 5 W SECTION 30 QUARTER NW
LATITUDE: N 34DEG 10MIN 49SEC LONGITUDE: W 112DEG 48MIN 59SEC
TOPO MAP NAME: CONGRESS - 7.5 MIN

CURRENT STATUS: PAST PRODUCER

COMMODITY:
MILL

BIBLIOGRAPHY:
ADMMR RUMICO MILLSITE FILE

03/18/88

ARIZONA DEPARTMENT OF MINES AND MINERAL RESOURCES FILE DATA

PRIMARY NAME: RUMICO MILLSITE

ALTERNATE NAMES:

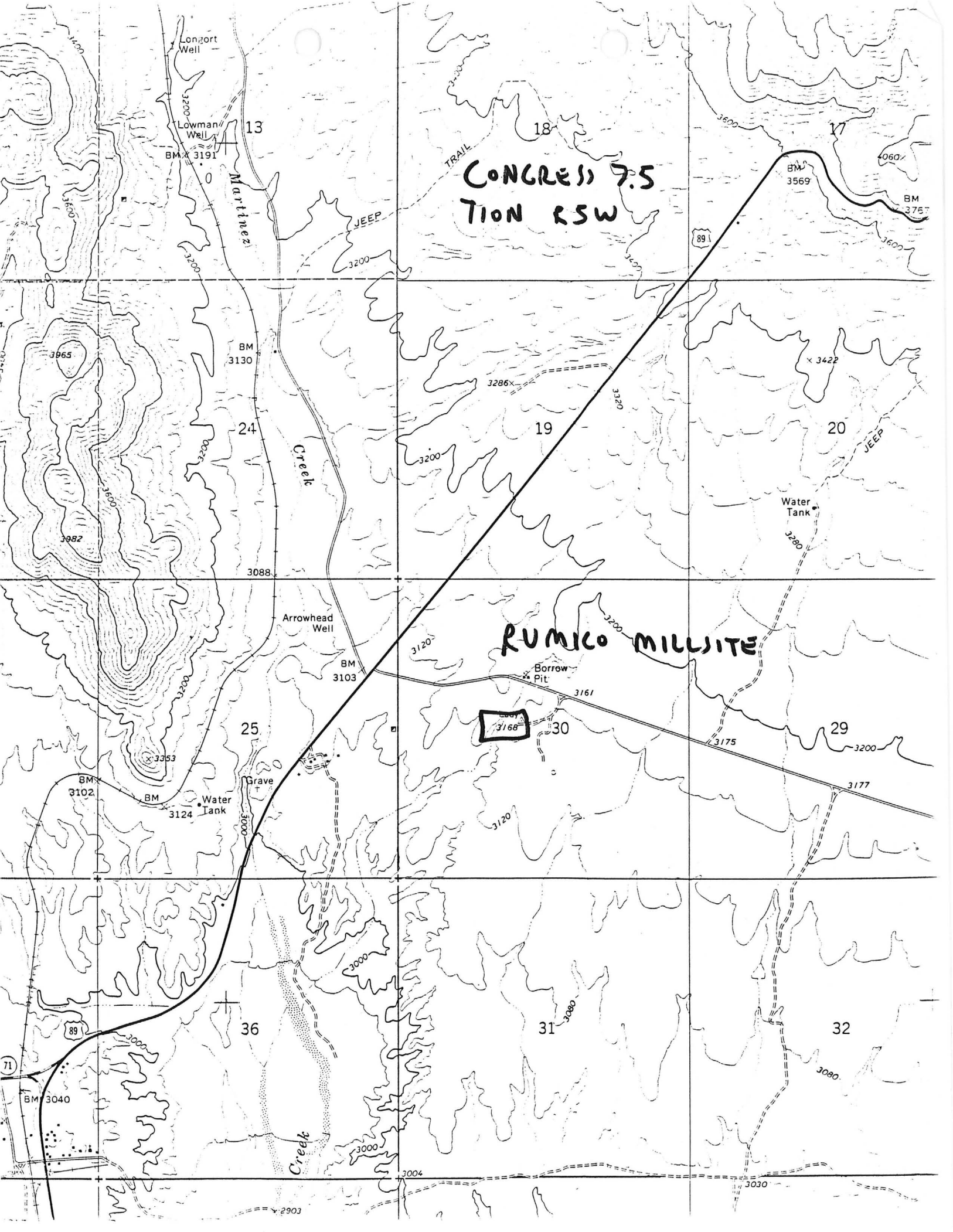
YAVAPAI COUNTY MILS NUMBER: 1375

LOCATION: TOWNSHIP 10 N RANGE 5 W SECTION 30 QUARTER NW
LATITUDE: N 34DEG 15MIN SEC LONGITUDE: W 112DEG 45MIN SEC
TOPO MAP NAME: CONGRESS - 7.5 MIN

CURRENT STATUS: ACTIVE

COMMODITY:
MILL

BIBLIOGRAPHY:
ADMMR RUMICO MILLSITE FILE



CONGRESS 7.5
TION RSW

RUMICO MILLSITE

3166

Longport Well
Lowman Well
BM 3191

Martinez Creek

BM 3130

24

3088

Creek

Arrowhead Well

BM 3103

25

BM 3102

BM 3124

Water Tank

Grave

36

Creek

18

TRAIL

JEEP

3200

19

3200

3285

3120

20

Water Tank

3200

Borrow Pit

3161

30

3120

31

3000

29

3175

3177

32

3000

3030

891

891

71

BM 3040

2903

3004

13

17

4060

BM 3757

3422

COMPLETE AND MAIL TO
STATE MINE INSPECTOR
705 WEST WING, CAPITOL TOWER
PHOENIX, ARIZONA 85007-2859

Rumico Mine (A)

OR OFFICE USE ONLY
START-UP NUMBER 64325117
STATE NUMBER _____
MS ~~STATE MINE INSPECTOR~~
Hamm

NOTICE TO ARIZONA STATE MINE INSPECTOR ^{JUL 10 1986}

In compliance with the Arizona Revised Statute Section 27-303, we are submitting this written notice to the Arizona State Mine Inspector of our intent to start stop _____ move _____ (Please check one) a mining operation.

If this is a move, please show last location: _____
If you have not operated a mine previously in Arizona, please check here: If you want the (new Corp. Education and Training Division to assist with your mine safety training, please check here: _____
If this operation will use Cyanide for leaching, please check here: _____

COMPANY NAME: Rumico Corporation

DIVISION: Mineral

MINE OR PLANT NAME: Rumico Mill TELEPHONE: 866-2823

CHIEF OFFICER: _____

COMPANY ADDRESS: 14203 North 19th Ave.

CITY: Phoenix STATE: Arizona ZIP CODE: 85023

MINE OR PLANT LOCATION: (Include county and nearest town, as well as directions or locating property by vehicle: 200' east of Highway 71, Congress, Arizona

(located at the junction of Highway 71 and Stanton Mine Road)

TYPE OF OPERATION: Grinding PRINCIPAL PRODUCT: Hematite-Magnetite

STARTING DATE: July 1, 1986 CLOSING DATE: _____ DURATION: _____

PERSON COMPLETING NOTICE: Herbert Russell TITLE: VP

DATE NOTICE MAILED TO STATE MINE INSPECTOR: 6-30-86

RUMICO MILL

YAVAPAI COUNTY

NJN WR 3/4/88: John Rudd (card) visited and reported the location of the Rumico Mill, Yavapai County to be T10N R5W Sec 30 NW.

KAP WR 5/27/88: In the company of Amy Holmes, Securities Division, Arizona Corporation Commission, a number of sites in western Maricopa County were visited to determine their applicability to use for background scenes for a movie. One such property was the Rumico Mill, Yavapai County. No one was at the mill during our visit. The plant consists of a rather complex assamblage of crushers, conveyors, rolls, mills (ball or tube?), in-process storage tanks, a rotary roasting furnace, and bagging plant. About a hundred tons of bagged hematite pigment was stockpiled on pallets. A video tape of the plant was made as a test for future filming and a copy made for our files. The site was not used for the movie. In a relaced discussion with Herbert Russell regarding the status of the mill he reported that it is functional, has produced acceptable product and has essentially used up their capital. He is trying to raise more money to continue marketing and production.

KAP WR 7/1/88: Passed the Rumico Mill (file) Yavapai County while en route to another property. It was noted that the mill is still idle.
