



CONTACT INFORMATION

Mining Records Curator
Arizona Geological Survey
1520 West Adams St.
Phoenix, AZ 85007
602-771-1601
<http://www.azgs.az.gov>
inquiries@azgs.az.gov

The following file is part of the

Arizona Department of Mines and Mineral Resources Mining Collection

ACCESS STATEMENT

These digitized collections are accessible for purposes of education and research. We have indicated what we know about copyright and rights of privacy, publicity, or trademark. Due to the nature of archival collections, we are not always able to identify this information. We are eager to hear from any rights owners, so that we may obtain accurate information. Upon request, we will remove material from public view while we address a rights issue.

CONSTRAINTS STATEMENT

The Arizona Geological Survey does not claim to control all rights for all materials in its collection. These rights include, but are not limited to: copyright, privacy rights, and cultural protection rights. The User hereby assumes all responsibility for obtaining any rights to use the material in excess of "fair use."

The Survey makes no intellectual property claims to the products created by individual authors in the manuscript collections, except when the author deeded those rights to the Survey or when those authors were employed by the State of Arizona and created intellectual products as a function of their official duties. The Survey does maintain property rights to the physical and digital representations of the works.

QUALITY STATEMENT

The Arizona Geological Survey is not responsible for the accuracy of the records, information, or opinions that may be contained in the files. The Survey collects, catalogs, and archives data on mineral properties regardless of its views of the veracity or accuracy of those data.

PRINTED: 03/14/2003

ARIZONA DEPARTMENT OF MINES AND MINERAL RESOURCES AZMILS DATA

PRIMARY NAME: ROUND MTN ROCKHOUND AREA

ALTERNATE NAMES:

GREENLEE COUNTY MILS NUMBER: 139

LOCATION: TOWNSHIP 11 S RANGE 32 E SECTION 22 QUARTER C
LATITUDE: N 32DEG 27MIN 47SEC LONGITUDE: W 109DEG 03MIN 55SEC
TOPO MAP NAME: ENGINE MOUNTAIN - 7.5 MIN

CURRENT STATUS: PAST PRODUCER

COMMODITY:
GEMSTONE FIRE AGATE

BIBLIOGRAPHY:
ADMMR ROUND MTN ROCKHOUND AREA FILE

10/12/88

ARIZONA DEPARTMENT OF MINES AND MINERAL RESOURCES FILE DATA

PRIMARY NAME: ROUND MTN ROCKHOUND AREA

ALTERNATE NAMES:

GREENLEE COUNTY MILS NUMBER: 139

LOCATION: TOWNSHIP 11 S RANGE 32 E SECTION 22 QUARTER
LATITUDE: N 32DEG 30MIN SEC LONGITUDE: W 109DEG 00MIN SEC
TOPO MAP NAME: ENGINE MOUNTAIN - 7.5 MIN

CURRENT STATUS: ACTIVE

COMMODITY:
GEMSTONE FIRE AGATE

BIBLIOGRAPHY:
ADMMR ROUND MTN ROCKHOUND AREA FILE

1 SIMON QUADRANGLE
ARIZONA-NEW MEXICO
15 MINUTE SERIES (TOPOGRAPHIC)

15 MINUTE SERIES (TOPOGRAPHIC)

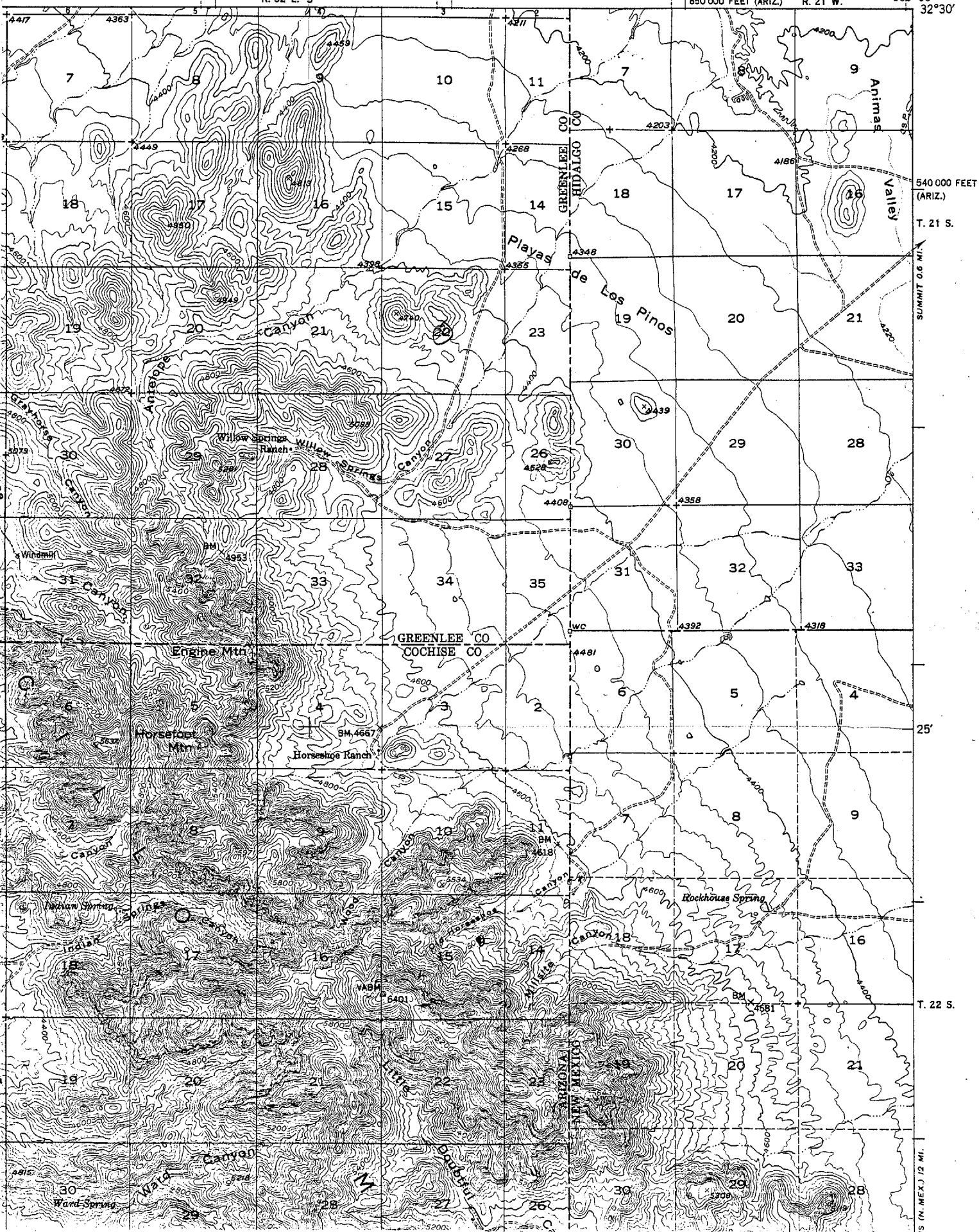
R. 32 E. 5'

12 MI. TO U.S. 70
1850,000 FEET (ARIZ.)

R. 21 W.

109°00'

32°30'



ROUND MOUNTAIN ROCKHOUN AREA

LEGEND

 Collecting Area*

 Access Roads

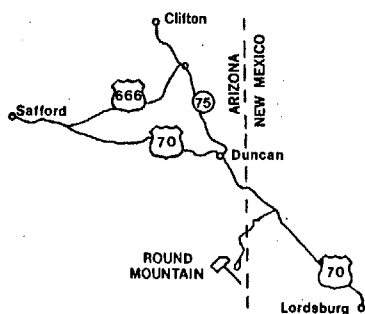
 Campsites

 Site Register

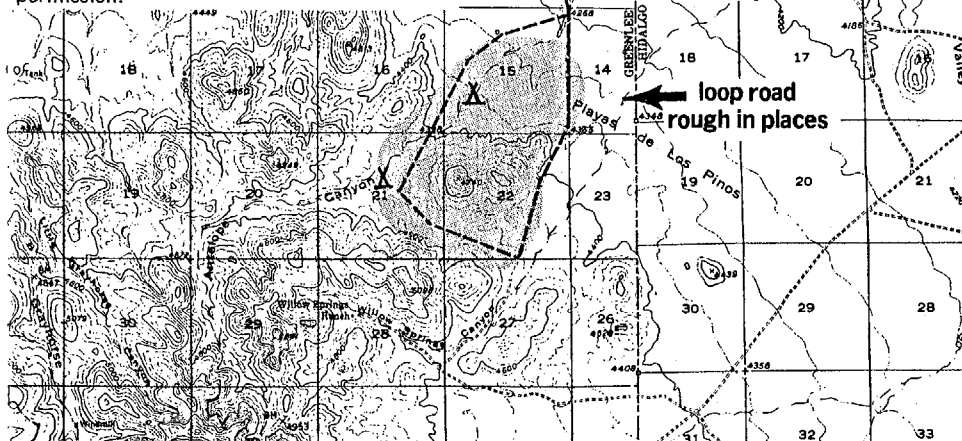
Map Scale 1 inch = 1 mile



VICINITY MAP



You may dig on public lands, subject to certain limitations: Some good digging sites on Federal lands may be staked mineral claims. Please respect the rights of these claimants, as the gemstones and minerals on these claims are their property. Severe penalties are prescribed by law for removal of materials without the owner's permission.



R32E

ROCKHOUNDING RULES

1. Restrict vehicular travel to the existing roads. Damage to vegetation and soil will result from off-road vehicular travel.

2. Travel on dirt roads is not advised in wet weather. Roads may become impassable and are very susceptible to erosion when rutted by vehicles in wet weather.

3. Leave all gates as you find them.

4. Deposit refuse in litter barrels. Do not bury it. Coyotes and other wild animals dig up buried refuse and scatter it over the countryside.

5. Please camp at the identified campsites, or at least 1/4 mile from water, to avoid conflicts with wildlife or livestock use (in accordance with state law). Avoid contamination of wells, creeks, or other water supplies.

6. Sanitary facilities are not provided. Latrines should be at least 3 to 4 feet deep and located a compatible distance from camping area and away from water or depressions where water may collect or run. Cover them completely before leaving.

7. Dumping sewage from self-contained camping units is prohibited. This should be taken care of at appropriate facilities before entering or after leaving this area.

8. Observe all signs. Respect private property and movements. The lands you travel over are used for many purposes besides recreation. Avoid driving over surface pipelines.

9. Do not molest wildlife or livestock.

10. Use firearms safely. Dense vegetation hides livestock, wildlife and other rockhounds.

11. The use of explosives for digging purposes is not allowed.

FIRE AGATE

Agate, probably the most common and variable gemstone, is a variety of silica formed by volcanic activity. A multitude of shapes and colors are caused by mineral impurities in the silica. It is these impurities which make the fire agate distinctive. Fire agate is considered a gemstone because of the play of colors beneath its surface that is formed much as a pearl is formed in the oyster.

Volcanic water seeps into cracks and crevices below the earth's surface. The impact of the water drops separate some minerals from the water; the mineral stays and the agate grows. Fire agates are said to offer all the fiery color of gem opals, are less costly, are superior in hardness, and will not fade.

BE CAREFUL WITH FIRE

Although lightning causes many fires on public land, often the most disastrous and damaging fires to resources and property are those caused by careless persons. Rangelands can be destroyed by thoughtlessness or indifference on the part of anyone - hunter, camper, local resident or traveler. It's up to all of us to protect our lands from fire. So, please crush out your smokes and drown your campfires.

HAZARDS

Rockhounding, like most other outdoor activities, is not without certain hazards.

Rattlesnakes may be found in certain areas during the warm months. Watch out for them in rock slides and around damp areas, under old buildings and ledges, etc. Prompt medical treatment is always advisable if bitten.

Rockhounds may unknowingly create hazards through careless digging. Deep or steep-sided pits or trenches should be filled upon completion of digging, as they pose a hazard to both man and beast.

ROUND MOUNTAIN ROCKHOUND AREA

VISITOR INFORMATION

Welcome to Round Mountain Rockhound Area, administered and maintained by the U.S. Bureau of Land Management.

This brochure is intended to serve as a guide for recreationists interested in rockhounding. Guidance is offered to help identify the local materials and to keep your visit safe, productive and enjoyable.

The road beyond the registry station is not regularly maintained, and use by passenger car or travel trailer is not recommended.

Water is not available. Livestock and wildlife water has been developed at several locations, but human consumption is not advisable.

Rockhounds, both as individuals and collectively as members of clubs, pride themselves on their good manners in the field. They know that maintaining their good reputation is important in order to keep the welcome mat out at the many popular "digs." Demonstrate individual and club pride by complying with the rules and practicing good rockhound ethics.

Thank you for your cooperation.

Lester K. Rosenkrantz
District Manager
Safford District

FOR FURTHER INFORMATION CONTACT

BUREAU OF LAND MANAGEMENT
425 East 4th Street
Safford, Arizona 85546

Telephone (602)428-4040