



CONTACT INFORMATION

Mining Records Curator
Arizona Geological Survey
1520 West Adams St.
Phoenix, AZ 85007
602-771-1601
<http://www.azgs.az.gov>
inquiries@azgs.az.gov

The following file is part of the

Arizona Department of Mines and Mineral Resources Mining Collection

ACCESS STATEMENT

These digitized collections are accessible for purposes of education and research. We have indicated what we know about copyright and rights of privacy, publicity, or trademark. Due to the nature of archival collections, we are not always able to identify this information. We are eager to hear from any rights owners, so that we may obtain accurate information. Upon request, we will remove material from public view while we address a rights issue.

CONSTRAINTS STATEMENT

The Arizona Geological Survey does not claim to control all rights for all materials in its collection. These rights include, but are not limited to: copyright, privacy rights, and cultural protection rights. The User hereby assumes all responsibility for obtaining any rights to use the material in excess of "fair use."

The Survey makes no intellectual property claims to the products created by individual authors in the manuscript collections, except when the author deeded those rights to the Survey or when those authors were employed by the State of Arizona and created intellectual products as a function of their official duties. The Survey does maintain property rights to the physical and digital representations of the works.

QUALITY STATEMENT

The Arizona Geological Survey is not responsible for the accuracy of the records, information, or opinions that may be contained in the files. The Survey collects, catalogs, and archives data on mineral properties regardless of its views of the veracity or accuracy of those data.

PRINTED: 03/14/2003

ARIZONA DEPARTMENT OF MINES AND MINERAL RESOURCES AZMILS DATA

PRIMARY NAME: ROSARIO MINE

ALTERNATE NAMES:

SANTA CRUZ COUNTY MILS NUMBER: 192

LOCATION: TOWNSHIP 21 S RANGE 15 E SECTION 19 QUARTER SE
LATITUDE: N 31DEG 35MIN 33SEC LONGITUDE: W 110DEG 50MIN 27SEC
TOPO MAP NAME: MOUNT WRIGHTSON - 15 MIN

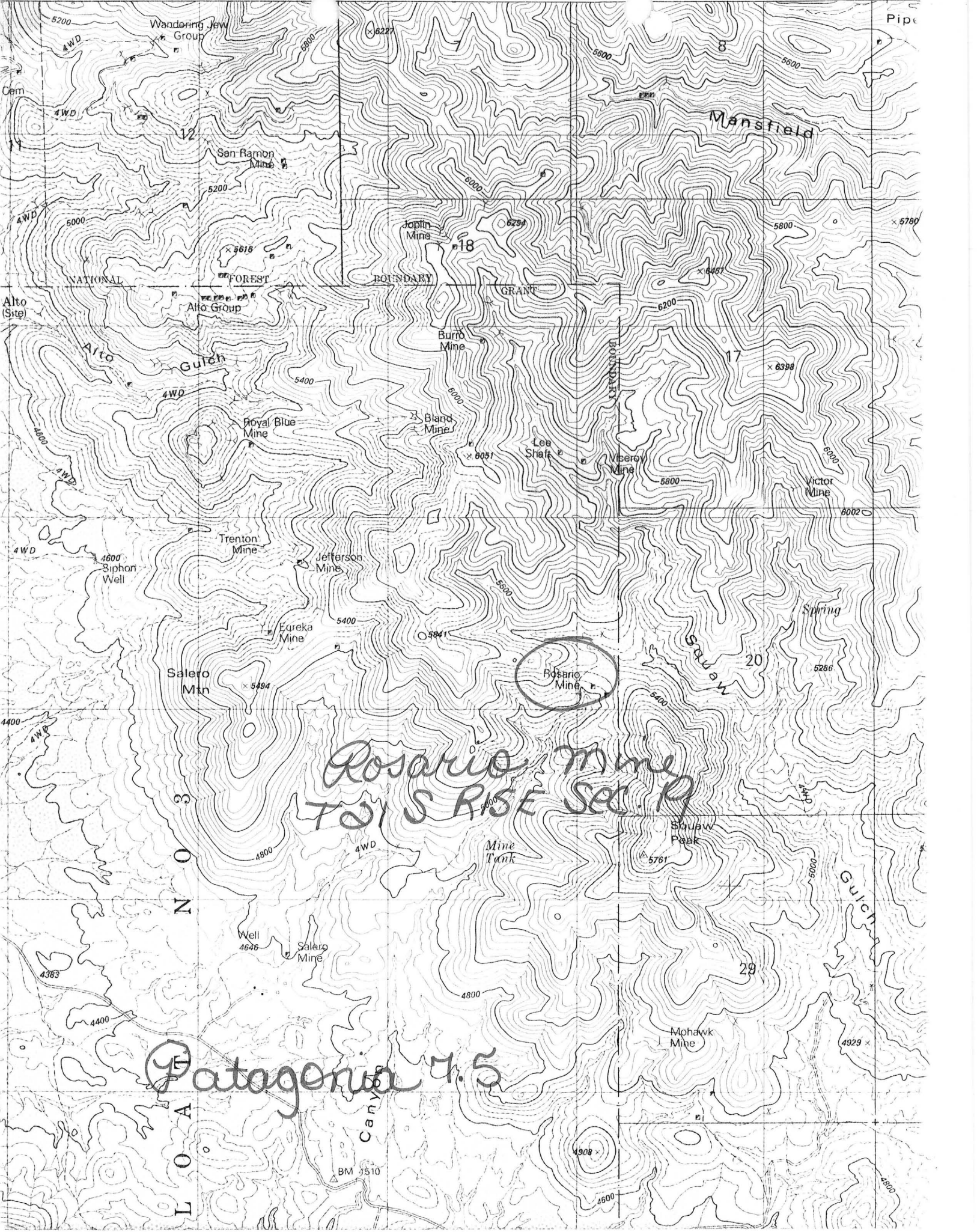
CURRENT STATUS: PAST PRODUCER

COMMODITY:

COPPER SULFIDE
SILVER
LEAD SULFIDE
ZINC SULFIDE
MANGANESE

BIBLIOGRAPHY:

USGS MT WRIGHTSON QUAD
AZBM CARD FILE SANTA CRUZ CO.
SCHRADER, F.C., 1915, USGS BULL. 582, P. 215
ADMMR ROSARIO MINE FILE



Rosario Mine
T21 S R15E SEC. 19

Patagonia 7.5

L O A

Can

BM 5510

4908

Guich

Squaw Park

Mohawk Mine

Mine Tank

Well 4646

Salero Mine

N O 33

Spring

Squaw

Trenton Mine

Jefferson Mine

Eureka Mine

Salero Mtn

Siphon Well

Alto Gulch

Alto Group

NATIONAL FOREST

San Ramon Mine

Joplin Mine

Burns Mine

Bland Mine

Lee Shaft

Viseow Mine

Victor Mine

Mansfield

Wandering Jew Group

Cem

Pipe

Alto (Site)

5780

17

20

29

BOUNDARY

GRANT

BOUNDARY

Guich

4929

4600

4600

ROSARIO MINE

9/84

SANTA CRUZ COUNTY
TYNDALL DISTRICT
T21S R15E Sec. 19

MILS Santa Cruz Index #192

USGS Bull. 582, p. 215-216

USGS PP 748, p. 11-12

See: Arizona Mining Journal, 12/1/22, p. 18

Patagonia 7.5 (included in file)

COMMODITY INFORMATION

*COMMODITIES PRESENT C10 < Cu, Pb, Zn, Mn >
 *ORE MINERALS C30 < CERUSSITE, GALENA, PSILOMELANE, SILVER BROMIDE, PHALERITE >
 *COMMODITY SUBTYPES C41 < >
 *GEN. ANALYTICAL DATA C43 < ORE VALUES IN 1915 AVERAGED ABOUT 25.00 / TON, MOSTLY IN AG WITH SOME CU. >
 *COM. INFO. COMMENTS C50 < >

* SIGNIFICANCE

	PRODUCER	NON-PRODUCER
MAJOR PRODUCTS	MAJOR < <u>AG, Pb, Zn, Mn</u> >	MAIN COMMODITIES PRESENT C11 < >
MINOR PRODUCTS	MINOR < <u>Cu</u> >	MINOR COMMODITIES PRESENT C12 < >
POTENTIAL PRODUCTS	POTEN < >	
OCCURRENCES	OCCUR < <u>Mn, Zn</u> >	OCCUR < >

*PRODUCTION

	PRODUCER	NON-PRODUCER
PRODUCTION <input checked="" type="radio"/> (circle)	PRODUCTION SIZE <input checked="" type="radio"/> <u>SM</u> <input type="radio"/> MED <input type="radio"/> LGE (circle one)	PRODUCTION <input type="radio"/> UND <input checked="" type="radio"/> NO (circle one)

*STATUS

	PRODUCER	NON-PRODUCER
	STATUS AND ACTIVITY A20 < <u>4</u> >	STATUS AND ACTIVITY A20 < <u>1</u> >

*DISCOVERER L20 < >
 *YEAR OF DISCOVERY L10 < 1904 > *NATURE OF DISCOVERY L30 < 8 > *YEAR OF FIRST PRODUCTION L40 < 1907 > *YEAR OF LAST PRODUCTION L45 < 1926 >
 *PRESENT/LAST OWNER A12 < MRS. FRANCES E. GERINI AND MRS. WILLIE JOE STEELE (1956) >
 *PRESENT/LAST OPERATOR A13 < SALERO MINING CO. (1926) >
 *EXPL./DEV. COMMENTS L110 < WORK DONE ON THE ROSARIO NO. 1 CLAIM IS VERY OLD, (PRIOR TO 1904), PROBABLY MEXICAN; OTHER PAST OPERATORS INCLUDE: ROSARIO MINING CO. (1913). >

DESCRIPTION OF DEPOSIT

*DEPOSIT TYPE(S) C40 < VEIN / SHEAR ZONE ; STOCK WORK >
 *DEPOSIT FORM/SHAPE M10 < TABULAR >
 *DEPTH TO TOP M20 < > *UNITS M21 < > *MAXIMUM LENGTH M40 < > *UNITS M41 < >
 *DEPTH TO BOTTOM M30 < > *UNITS M31 < > *MAXIMUM WIDTH M50 < 2 > *UNITS M51 < FT >
 *DEPOSIT SIZE M15 < SM M15 < MEDIUM > M15 < LARGE > (circle one) *MAXIMUM THICKNESS M60 < > *UNITS M61 < >
 *STRIKE M70 < WNW > *DIP M80 < STEEPLY TO SOUTH, OR VERTICAL >
 *DIRECTION OF PLUNGE M100 < > *PLUNGE M90 < >
 *DEP. DESC. COMMENTS M110 < VEINS ARE LINKED, FORMING A STOCK WORK; VEIN ON ROSARIO NO. 2 CLAIM RANGES IN WIDTH FROM 3 INCHES TO 2 FT.; 2 PARALLEL VEINS ON UNITED STATES NO. 2 >

DESCRIPTION OF WORKINGS

*Workings are: SURFACE M120 UNDERGROUND M130 BOTH M140 (circle one)
 *DEPTH BELOW SURFACE M160 < 110 > *UNITS M161 < FT > *OVERALL LENGTH M190 < > *UNITS M191 < >
 *LENGTH OF WORKINGS M170 < 445 > *UNITS M171 < FT > *OVERALL WIDTH M200 < > *UNITS M201 < >
 *DESC. OF WORK. COM. M220 < ROSARIO NO. 1 CLAIM DEVELOPED BY 150-FT TUNNEL AND 60-FT UPRISE; ROSARIO NO. 2 CLAIM DEVELOPED BY 110-FT SHAFT WITH 3 SHORT DRIFTS AND 25-FT SHAFT; UNITED STATES NO. 2 CLAIM WORKED BY AN 80-FT SHAFT >

GEOLOGY

*AGE OF HOST ROCK(S) K1 < LCRET > *67 MY. BY K-AR DATING METHOD (DREWES, H., 1971)
 *HOST ROCK TYPE(S) K1A < MODERATELY COARSE-GRAINED QUARTZ DIORITE >
 *AGE OF IGNEOUS ROCK(S) K2 < LCRET >
 *IGNEOUS ROCK TYPE(S) K2A < FINE-GRAINED QUARTZ MONZONITE PORPHYRY >
 *AGE OF MINERALIZATION K3 < LCRET >
 *PERT. MINERALS (NOT ORE) K4 < QUARTZ GANGUE, LIMONITE, MANGANESE AND IRON OXIDE STAINING >
 *ORE CONTROL/LOCUS K5 < SEVERAL WNW-TRENDING QUARTZ FISSURE VEINS FORMING STOCKWORK IN >
 *MAJ. REG. TRENDS/STRUCT. N5 < POST-MINERALIZATION FAULTING; NE- AND E-W TRENDING QUARTZ FISSURE >
 *TECTONIC SETTING N15 < SALERO FAULT BLOCK >
 *SIGNIFICANT LOCAL STRUCT. N70 < INDIVIDUAL VEINS APPEAR TO BE A STOCKWORK OF QUARTZ VEINLETS, PRINCIPALLY >
 *SIGNIFICANT ALTERATION N75 < SURFACE OXIDATION EXCEEDING DEPTHS OF 110 FT. >
 *PROCESS OF CONC./ENRICH. N80 < OXIDATION AND SECONDARY ENRICHMENT >
 *FORMATION AGE N30 < >
 *FORMATION NAME N30A < >
 *SECOND FM AGE N35 < >
 *SECOND FM NAME N35A < >
 *IGNEOUS UNIT AGE N50 < LCRET >
 *IGNEOUS UNIT NAME N50A < JOSEPHINE CANYON DIORITE >
 *SECOND IG. UNIT AGE N55 < >
 *SECOND IG. UNIT NAME N55A < >
 *GEOLOGY COMMENTS N85 < FISSURE FILLING CONSISTS OF BRECCIATED DIORITE AND QUARTZ, HIGHLY STAINED WITH MANGANESE AND IRON OXIDES AND LEAD CARBONATE >

GENERAL COMMENTS

GENERAL COMMENTS GEN < >

Of Mines And Men



Arizona PAY DIRT for April 1978