



CONTACT INFORMATION

Mining Records Curator
Arizona Geological Survey
1520 West Adams St.
Phoenix, AZ 85007
602-771-1601
<http://www.azgs.az.gov>
inquiries@azgs.az.gov

The following file is part of the

Arizona Department of Mines and Mineral Resources Mining Collection

ACCESS STATEMENT

These digitized collections are accessible for purposes of education and research. We have indicated what we know about copyright and rights of privacy, publicity, or trademark. Due to the nature of archival collections, we are not always able to identify this information. We are eager to hear from any rights owners, so that we may obtain accurate information. Upon request, we will remove material from public view while we address a rights issue.

CONSTRAINTS STATEMENT

The Arizona Geological Survey does not claim to control all rights for all materials in its collection. These rights include, but are not limited to: copyright, privacy rights, and cultural protection rights. The User hereby assumes all responsibility for obtaining any rights to use the material in excess of "fair use."

The Survey makes no intellectual property claims to the products created by individual authors in the manuscript collections, except when the author deeded those rights to the Survey or when those authors were employed by the State of Arizona and created intellectual products as a function of their official duties. The Survey does maintain property rights to the physical and digital representations of the works.

QUALITY STATEMENT

The Arizona Geological Survey is not responsible for the accuracy of the records, information, or opinions that may be contained in the files. The Survey collects, catalogs, and archives data on mineral properties regardless of its views of the veracity or accuracy of those data.

05/10/1999

ARIZONA DEPARTMENT OF MINES AND MINERAL RESOURCES FILE DATA

PRIMARY NAME: ROGERS WELL MILLSITE

ALTERNATE NAMES:

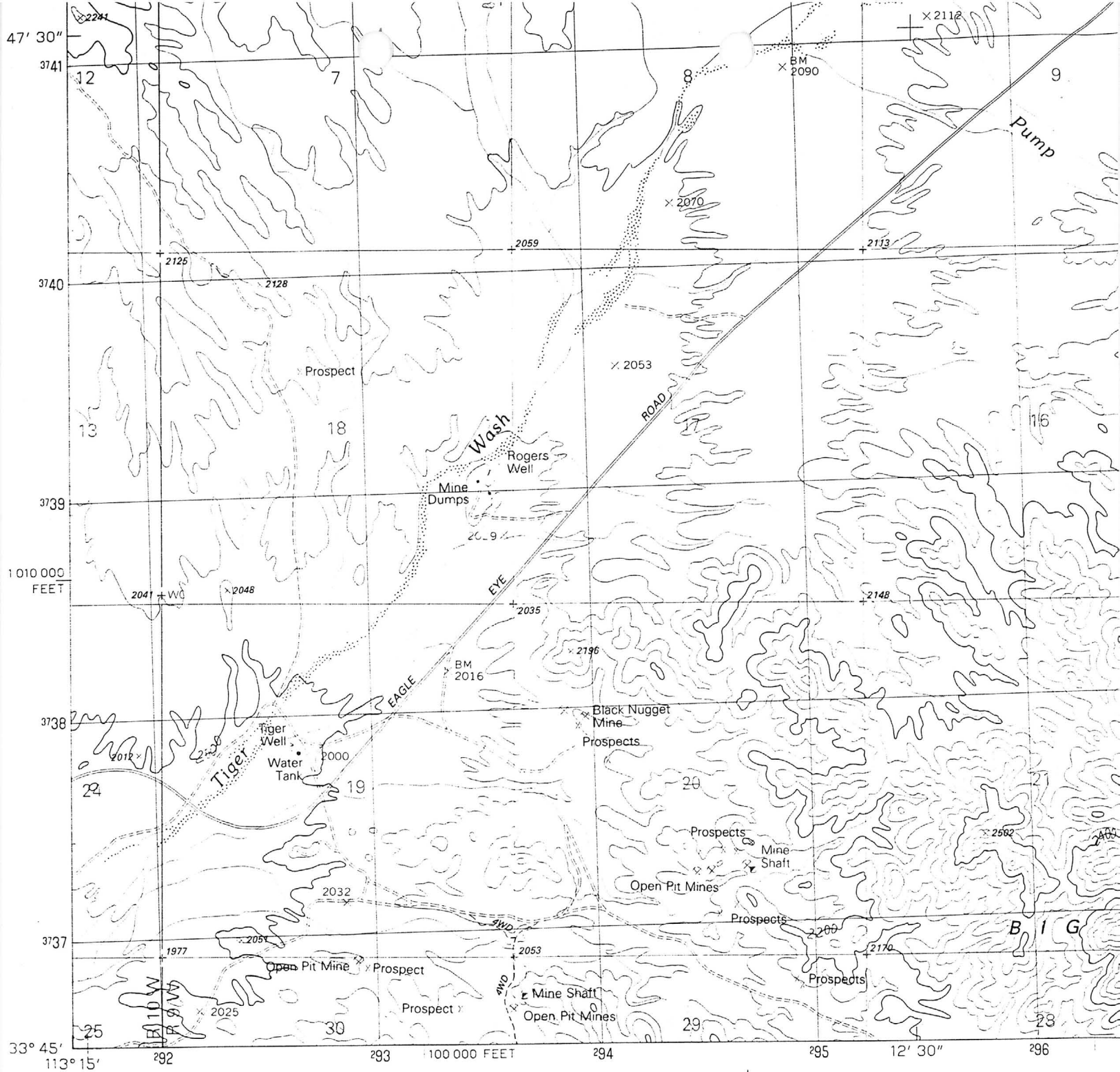
MARICOPA COUNTY MILS NUMBER: 530

LOCATION: TOWNSHIP 5 N RANGE 9 W SECTION 17 QUARTER SW
LATITUDE: N 33DEG 46MIN 16SEC LONGITUDE: W 113DEG 13MIN 36SEC
TOPO MAP NAME: AGUILA - 15 MIN

CURRENT STATUS: PAST PRODUCER

COMMODITY:
MILL GRAVITY

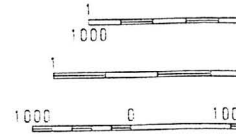
BIBLIOGRAPHY:
ADMMR ROGERS WELL MILLSITE FILE



PRODUCED BY THE UNITED STATES GEOLOGICAL SURVEY
 CONTROL BY USGS, NOS/NOAA
 COMPILED FROM AERIAL PHOTOGRAPHS TAKEN 1951 AND 1960
 FIELD CHECKED 1962
 LIMITED REVISION FROM AERIAL PHOTOGRAPHS TAKEN 1984
 FIELD CHECKED 1986 MAP EDITED 1990
 PROJECTION TRANSVERSE MERCATOR
 GRID: 1000-METER UNIVERSAL TRANSVERSE MERCATOR ZONE 12
 10,000-FOOT STATE GRID TICKS ARIZONA, CENTRAL ZONE
 UTM GRID DECLINATION 1'13" WEST
 1990 MAGNETIC NORTH DECLINATION 12'30" EAST
 VERTICAL DATUM NATIONAL GEODETIC VERTICAL DATUM OF 1929
 HORIZONTAL DATUM 1927 NORTH AMERICAN DATUM
 To place on the predicted North American Datum of 1983,
 move the projection lines as shown by dashed corner ticks
 (2 meters south and 69 meters east)
 There may be private inholdings within the boundaries of any
 Federal and State Reservations shown on this map
 No distinction made between houses, barns, and other buildings
 Public Land Survey System is shown as published in 1962 and
 verified or supplemented in 1986

PROVISIONAL MAP
 Produced from original
 manuscript drawings. Informa-
 tion shown as of date of
 field check. T

TIGER WELL
 7.5' 1990



FOR