



CONTACT INFORMATION

Mining Records Curator
Arizona Geological Survey
1520 West Adams St.
Phoenix, AZ 85007
602-771-1601
<http://www.azgs.az.gov>
inquiries@azgs.az.gov

The following file is part of the

Arizona Department of Mines and Mineral Resources Mining Collection

ACCESS STATEMENT

These digitized collections are accessible for purposes of education and research. We have indicated what we know about copyright and rights of privacy, publicity, or trademark. Due to the nature of archival collections, we are not always able to identify this information. We are eager to hear from any rights owners, so that we may obtain accurate information. Upon request, we will remove material from public view while we address a rights issue.

CONSTRAINTS STATEMENT

The Arizona Geological Survey does not claim to control all rights for all materials in its collection. These rights include, but are not limited to: copyright, privacy rights, and cultural protection rights. The User hereby assumes all responsibility for obtaining any rights to use the material in excess of "fair use."

The Survey makes no intellectual property claims to the products created by individual authors in the manuscript collections, except when the author deeded those rights to the Survey or when those authors were employed by the State of Arizona and created intellectual products as a function of their official duties. The Survey does maintain property rights to the physical and digital representations of the works.

QUALITY STATEMENT

The Arizona Geological Survey is not responsible for the accuracy of the records, information, or opinions that may be contained in the files. The Survey collects, catalogs, and archives data on mineral properties regardless of its views of the veracity or accuracy of those data.

PRINTED: 06/21/2002

ARIZONA DEPARTMENT OF MINES AND MINERAL RESOURCES AZMILS DATA

PRIMARY NAME: ROBY AND SONS

ALTERNATE NAMES:

YAVAPAI COUNTY MILS NUMBER: 949C

LOCATION: TOWNSHIP 8 N RANGE 2 W SECTION 16 QUARTER C
LATITUDE: N 34DEG 02MIN 10SEC LONGITUDE: W 112DEG 28MIN 12SEC
TOPO MAP NAME: COPPEROPOLIS - 7.5 MIN

CURRENT STATUS: EXP PROSPECT

COMMODITY:
GOLD

BIBLIOGRAPHY:

USGS COPPEROPOLIS QUAD
ADMMR WICKENBURG CORRES FILE WICKENBURG MINES
P 26
ADMMR ROBY & SONS FILE

06/02/86

ARIZONA DEPARTMENT OF MINES AND MINERAL RESOURCES FILE DATA

PRIMARY NAME: ROBY AND SONS

ALTERNATE NAMES:

YAVAPAI COUNTY MILS NUMBER: 949C

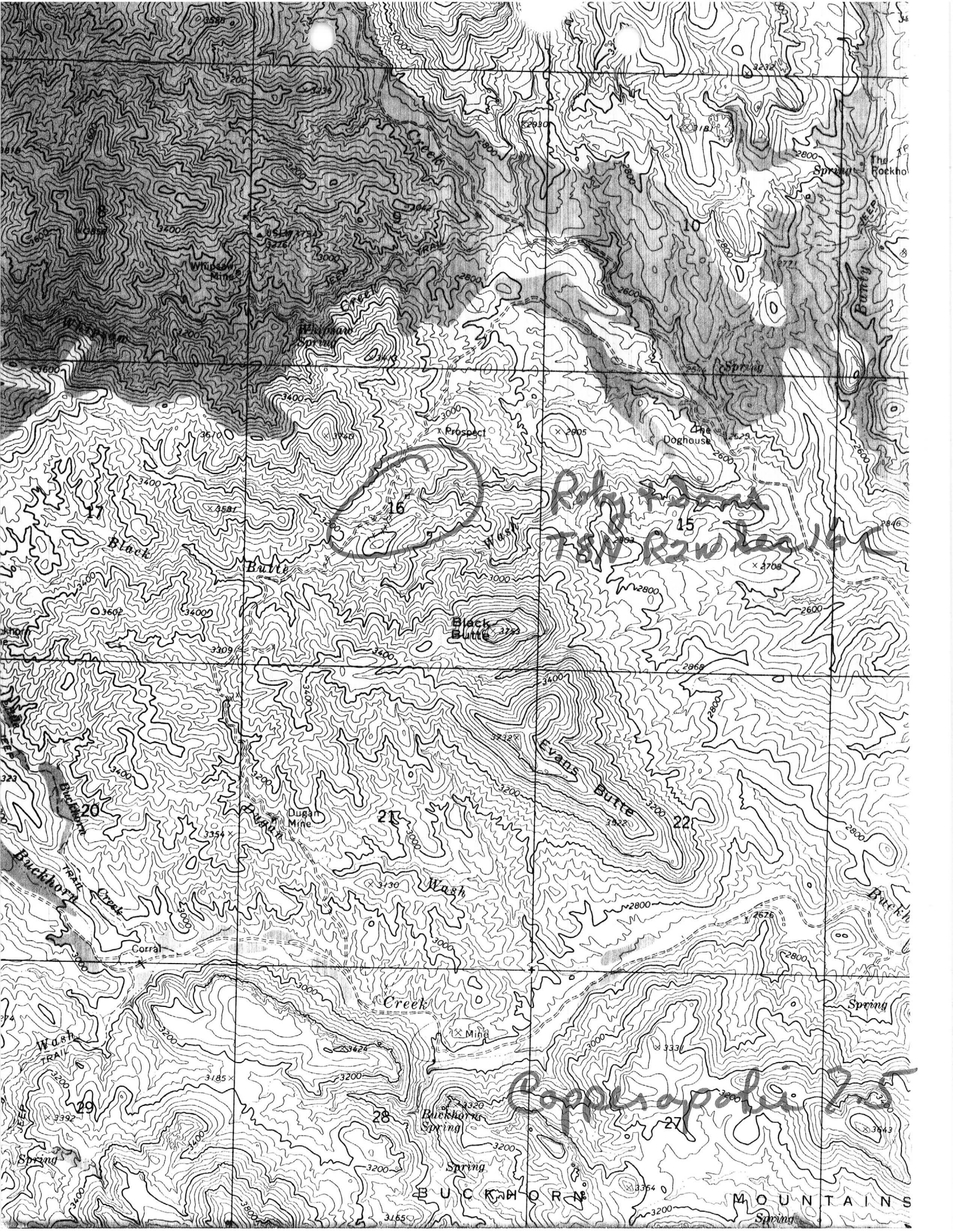
LOCATION: TOWNSHIP 8 N RANGE 2 W SECTION 16 QUARTER C
LATITUDE: N 34DEG 02MIN 10SEC LONGITUDE: W 112DEG 28MIN 12SEC
TOPO MAP NAME: COPPEROPOLIS - 7.5 MIN

CURRENT STATUS: EXP PROSPECT

COMMODITY:
GOLD

BIBLIOGRAPHY:

USGS COPPEROPOLIS QUAD
ADMMR WICKENBURG CORRES FILE WICKENBURG MINES
P 26
ADMMR ROBY & SONS FILE



Roly + ...
T&W R2W ...

Copperopolis 75

BUCKHORN MOUNTAINS

- REFERENCE 1 F1 < US&M-ABGMT F1 ATA
- REFERENCE 2 F2 < MILS LOCATION DATA
- REFERENCE 3 F3 < THE MINES OF WICKENBURG, 1907-08. Published by Wickenburg Businessman and Miner
- REFERENCE 4 F4 <

Mils - Roby + Sons # 949C

No file

Wickenburg Mines p. 26

U.S. CRIB-SITE FORM

RECORD IDENTIFICATION

RECORD NUMBER B10 < > RECORD TYPE B20 < X, I, M > DEPOSIT NUMBER B40 < >
 REPORT DATE G1 < 8, 1, 1, 1 > INFORMATION SOURCE B30 < 1, 2, > FILE LINK IDENT. B50 < US&M-004 025 1693 >
YR. MO.
 REPORTER(SUPERVISOR) G2 < ROTH, FRANCES A. > (DEWITT, ED >
(last, first, middle initial) (last, first, middle initial)
 REPORTER AFFILIATION G5 < ABGMT > SITE NAME A10 < ROBEY MINE >
 SYNONYMS A11 < ROBY, ROBY AND SONS, ROBEY AND SONS >

LOCATION

MINING DISTRICT/AREA A30 < CASTLE CREEK DISTRICT >
 COUNTY A60 < YAVAPAI > STATE A50 < A.Z. > COUNTRY A40 < U.S. >
 PHYSIOGRAPHIC PROV A63 < 1, 2, V >
 DRAINAGE AREA A62 < 1, 5, 0, 7, 0, 1, 0, 2, V >
 QUADRANGLE NAME A90 < COPPEROPOLIS > LAND STATUS A64 < 1, 0, V, >
(, 1, 9, 6, 9,) QUADRANGLE SCALE A100 < 2, 4, 0, 0, 0 >
 SECOND QUAD NAME A92 < > SECOND QUAD SCALE A91 < >
 ELEVATION A107 < 3, 0, 4, 0, V, F, T >

UTM ACCURACY GEODETIC
 NORTHING A120 < 3, 7, 6, 6, 9, 8, 0 > ACCURATE (circle) ESTIMATED EST < > LATITUDE A70 < > N
 EASTING A130 < 3, 6, 4, 3, 8, 0 > LONGITUDE A80 < > W
 ZONE NUMBER A110 < 1, 1, 2 >

CADASTRAL
 TOWNSHIP(S) A77 < 0, 0, 8, N, > RANGE(S) A78 < 0, 0, 2, W, >
 SECTION(S) A79 < 16 >
 SECTION FRACTION(S) A76 < C >
 MERIDIAN(S) A81 < GILA AND SALT RIVER >

POSITION FROM NEAREST PROMINENT LOCALITY A82 < 0.5 MILES NORTH WEST OF BLACK BUTTE >
 LOCATION COMMENTS A83 < LOCATION MEASURED TO CENTER OF SHAFT. A GROUP OF WORKINGS INCLUDING AN ADIT FORM A LINE TO THE SOUTHWEST. ADDITIONAL WORKINGS SCATTERED IN AREA >

* ESSENTIAL INFORMATION
 + ESSENTIAL SOMETIMES OR HIGHLY RECOMMENDED

