



CONTACT INFORMATION

Mining Records Curator
Arizona Geological Survey
1520 West Adams St.
Phoenix, AZ 85007
602-771-1601
<http://www.azgs.az.gov>
inquiries@azgs.az.gov

The following file is part of the

Arizona Department of Mines and Mineral Resources Mining Collection

ACCESS STATEMENT

These digitized collections are accessible for purposes of education and research. We have indicated what we know about copyright and rights of privacy, publicity, or trademark. Due to the nature of archival collections, we are not always able to identify this information. We are eager to hear from any rights owners, so that we may obtain accurate information. Upon request, we will remove material from public view while we address a rights issue.

CONSTRAINTS STATEMENT

The Arizona Geological Survey does not claim to control all rights for all materials in its collection. These rights include, but are not limited to: copyright, privacy rights, and cultural protection rights. The User hereby assumes all responsibility for obtaining any rights to use the material in excess of "fair use."

The Survey makes no intellectual property claims to the products created by individual authors in the manuscript collections, except when the author deeded those rights to the Survey or when those authors were employed by the State of Arizona and created intellectual products as a function of their official duties. The Survey does maintain property rights to the physical and digital representations of the works.

QUALITY STATEMENT

The Arizona Geological Survey is not responsible for the accuracy of the records, information, or opinions that may be contained in the files. The Survey collects, catalogs, and archives data on mineral properties regardless of its views of the veracity or accuracy of those data.

10/20/94

ARIZONA DEPARTMENT OF MINES AND MINERAL RESOURCES FILE DATA

PRIMARY NAME: ROBBERS ROOST

ALTERNATE NAMES:

COCHISE COUNTY MILS NUMBER: 924

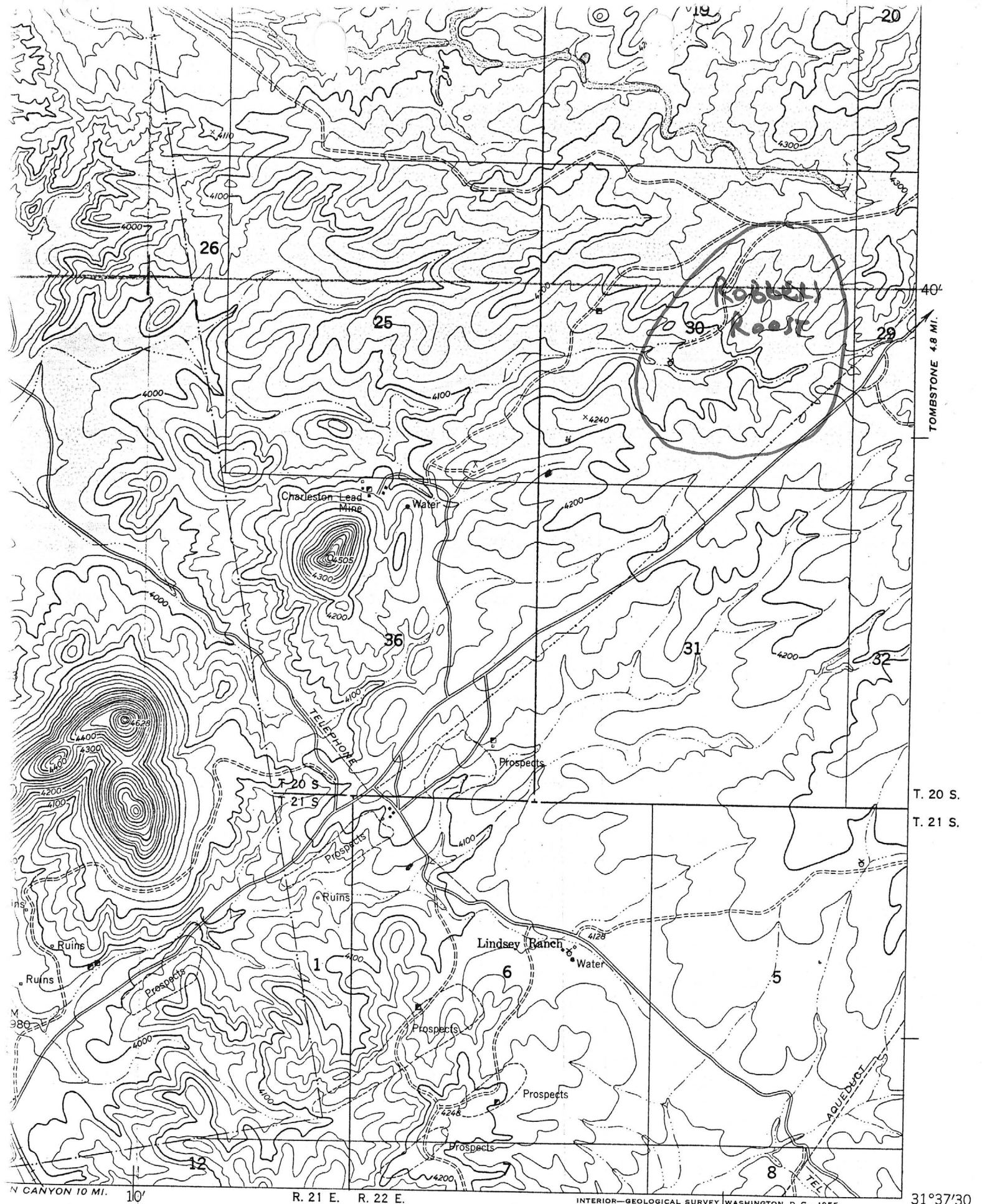
LOCATION: TOWNSHIP 20 S RANGE 22 E SECTION 30 QUARTER SE
LATITUDE: N 31DEG 39MIN 45SEC LONGITUDE: W 110DEG 08MIN 00SEC
TOPO MAP NAME: FAIRBANKS - 7.5 MIN

CURRENT STATUS: EXP PROSPECT

COMMODITY:
COPPER

BIBLIOGRAPHY:

ADMMR ROBBERS ROOST FILE
AGS FALL FIELDTRIP GUIDEBOOK 1988, TOMBSTONE
SUMMARY, P. 3



TOMBSTONE 4.8 MI.

T. 20 S.
T. 21 S.

31°37'30"
110°07'30"

FAIRBANKS 75

ROAD CLASSIFICATION

Heavy-duty 4 LANE 16 LANE Light-duty
Medium-duty 4 LANE 16 LANE

(TOMBSTONE)

Robbers Roost file
By Ken A. Phillips

Santa Cruz County

In a JABA news release of April 14, 1997 by JABA president Donald A. Sharpe, it was reported, "The Downey Project is adjacent to JABA's Robber's Roost porphyry copper project, southwest of Tombstone, Arizona. The Downey has potential for silver-lead-zinc mineralization zonally arranged on the east side of Robber's Roost. One hole drilled to a depth of 1,515 feet intercepted short zones of sub-economic silver mineralization, and the property was returned to its owners"

From: AGS 88 An Field Trip Guide Book

Tombstone Summary
October 17, 1988
Page 3 of 3

Abrigo and Martin at Bisbee may be similar to those suspected beneath Tombstone. This deep potential is presently being tested by Santa Fe Pacific Mining, who is drilling diamond drill holes as deeply as 3,000 feet.

Multiple porphyry copper centers are thought to occur associated with Laramide granodioritic to quartz monzonitic plutons, within the caldera complex. One such center, confirmed by deep drilling by ASARCO in 1973-74, occurs at the Robbers Roost, where intense phyllic alteration and breccia pipe emplacement are exposed by erosion. Here too, the hydrothermal system is superimposed on the Paleozoic sedimentary sequence, hidden beneath the Uncle Sam quartz latite tuffs, Silver Bell type andesites, and rhyolites of the Bronco volcanics. Silver, lead, zinc, mantos and copper replacement bodies are to be expected in this environment rather than ore grade igneous hosted copper porphyrys.

Chalcocite at Casabel 2,000'?