



## **CONTACT INFORMATION**

Mining Records Curator  
Arizona Geological Survey  
1520 West Adams St.  
Phoenix, AZ 85007  
602-771-1601  
<http://www.azgs.az.gov>  
[inquiries@azgs.az.gov](mailto:inquiries@azgs.az.gov)

The following file is part of the

Arizona Department of Mines and Mineral Resources Mining Collection

## **ACCESS STATEMENT**

These digitized collections are accessible for purposes of education and research. We have indicated what we know about copyright and rights of privacy, publicity, or trademark. Due to the nature of archival collections, we are not always able to identify this information. We are eager to hear from any rights owners, so that we may obtain accurate information. Upon request, we will remove material from public view while we address a rights issue.

## **CONSTRAINTS STATEMENT**

The Arizona Geological Survey does not claim to control all rights for all materials in its collection. These rights include, but are not limited to: copyright, privacy rights, and cultural protection rights. The User hereby assumes all responsibility for obtaining any rights to use the material in excess of "fair use."

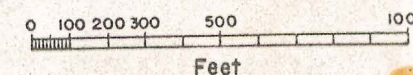
The Survey makes no intellectual property claims to the products created by individual authors in the manuscript collections, except when the author deeded those rights to the Survey or when those authors were employed by the State of Arizona and created intellectual products as a function of their official duties. The Survey does maintain property rights to the physical and digital representations of the works.

## **QUALITY STATEMENT**

The Arizona Geological Survey is not responsible for the accuracy of the records, information, or opinions that may be contained in the files. The Survey collects, catalogs, and archives data on mineral properties regardless of its views of the veracity or accuracy of those data.



# MINERAL SURVEY No. 4486 ARIZONA



Sec. 3

Sec. 2

Sec. 2

Sec. 1

Sec. 11

Sec. 12

NE 1/4 Sec. 10

NW 1/4 Sec. 12

SE 1/4 Sec. 10

SW 1/4 Sec. 11

SE 1/4 Sec. 11

SW 1/4 Sec. 12

Sec. 10

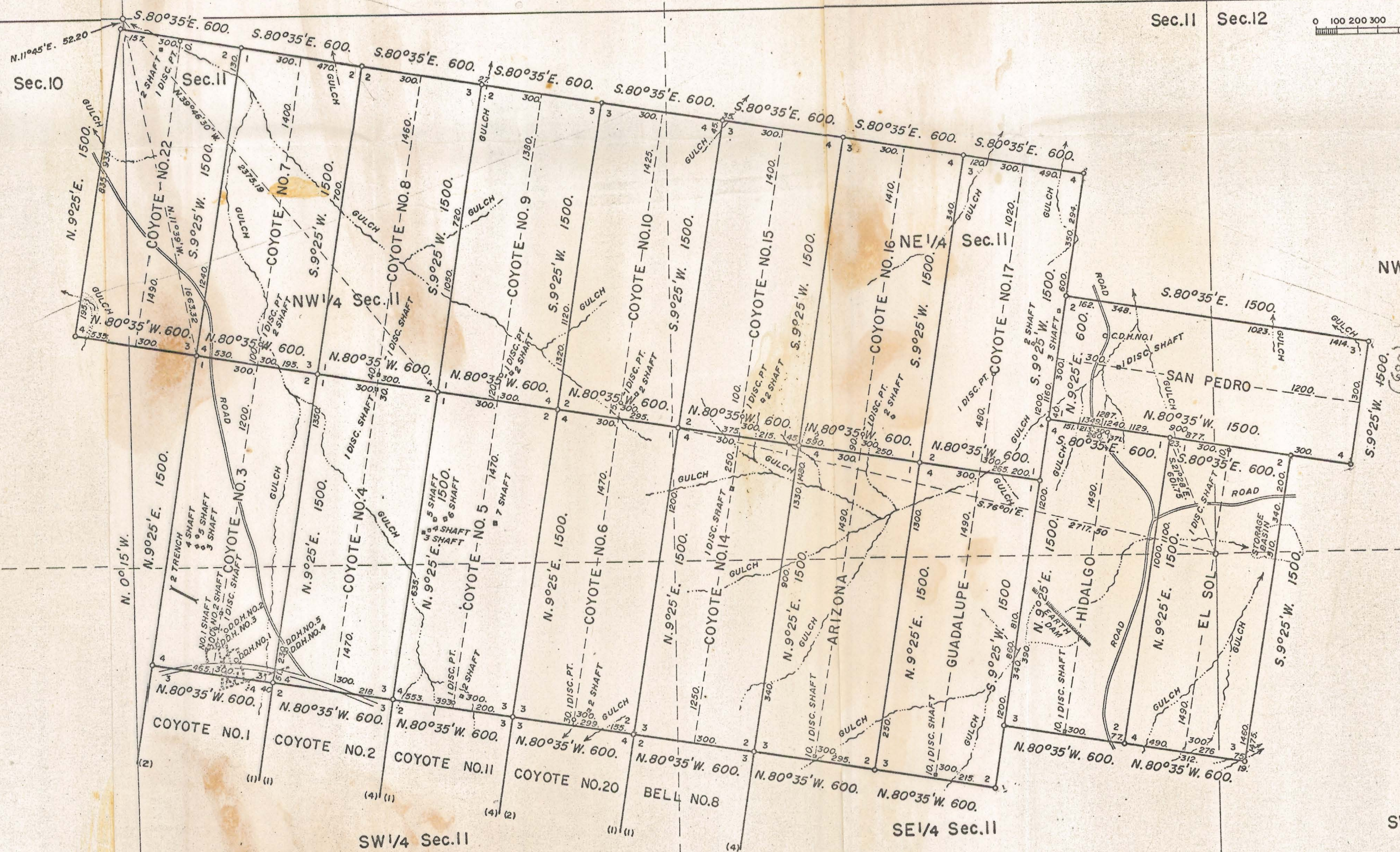
Sec. 11

T. 16 S., R. 8 E., G. & S. R. Mer.

Sec. 11

Sec. 12

Roadside Mine





# MINERAL SURVEY No. 4486 ARIZONA

CLAIM OF  
EDWIN A. STONE

KNOWN AS THE  
COYOTE NOS. 1, 2, 3, 4, 5, 6, 7, 8, 9, 10,  
11, 14, 15, 16, 17, 20, AND 22, BELL NOS. 6,  
7, AND 8, SAN PEDRO, EL SOL,  
HIDALGO, GUADALUPE, ARIZONA,  
ZORRA, LA ESTRELLA, BOULDER,  
LOS ALAMOS, TORTUGA, AND  
AMMION LODES

SITUATE IN  
Secs. 10, 11, 12, 14, and 15, T. 16 S., R. 8 E., G. & S. R. M.  
PIMA COUNTY  
Coyote Mining District  
Arizona Land District  
Lat. 32° 02' 30" N., Long. 111° 30' 30" W.,  
at Cor. No. 2 Bell No. 6

0 100 200 300 500 1000  
Feet  
Magnetic Declination 13° 30' E.

By Robert Lenon, Mineral Surveyor

UNITED STATES DEPARTMENT OF THE INTERIOR  
BUREAU OF LAND MANAGEMENT  
Phoenix, Arizona, FEB. 25, 1960

I hereby certify that this plat of Mineral Survey  
No. 4486, Arizona, is strictly conformable to the field  
notes of said survey which have been examined and  
approved.

*Lester S. Mann*  
Office Cadastral Engineer.

*Roadside*





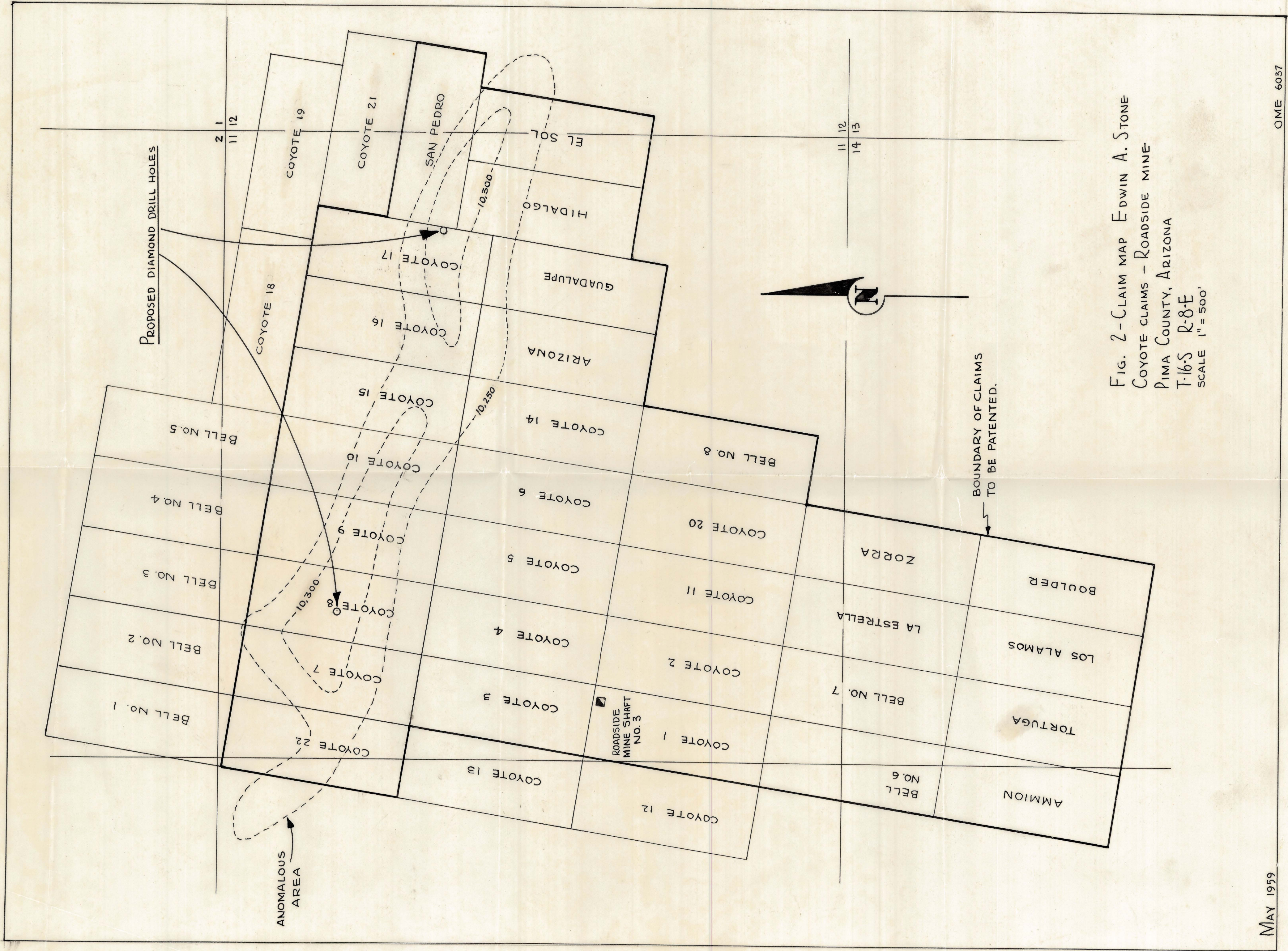
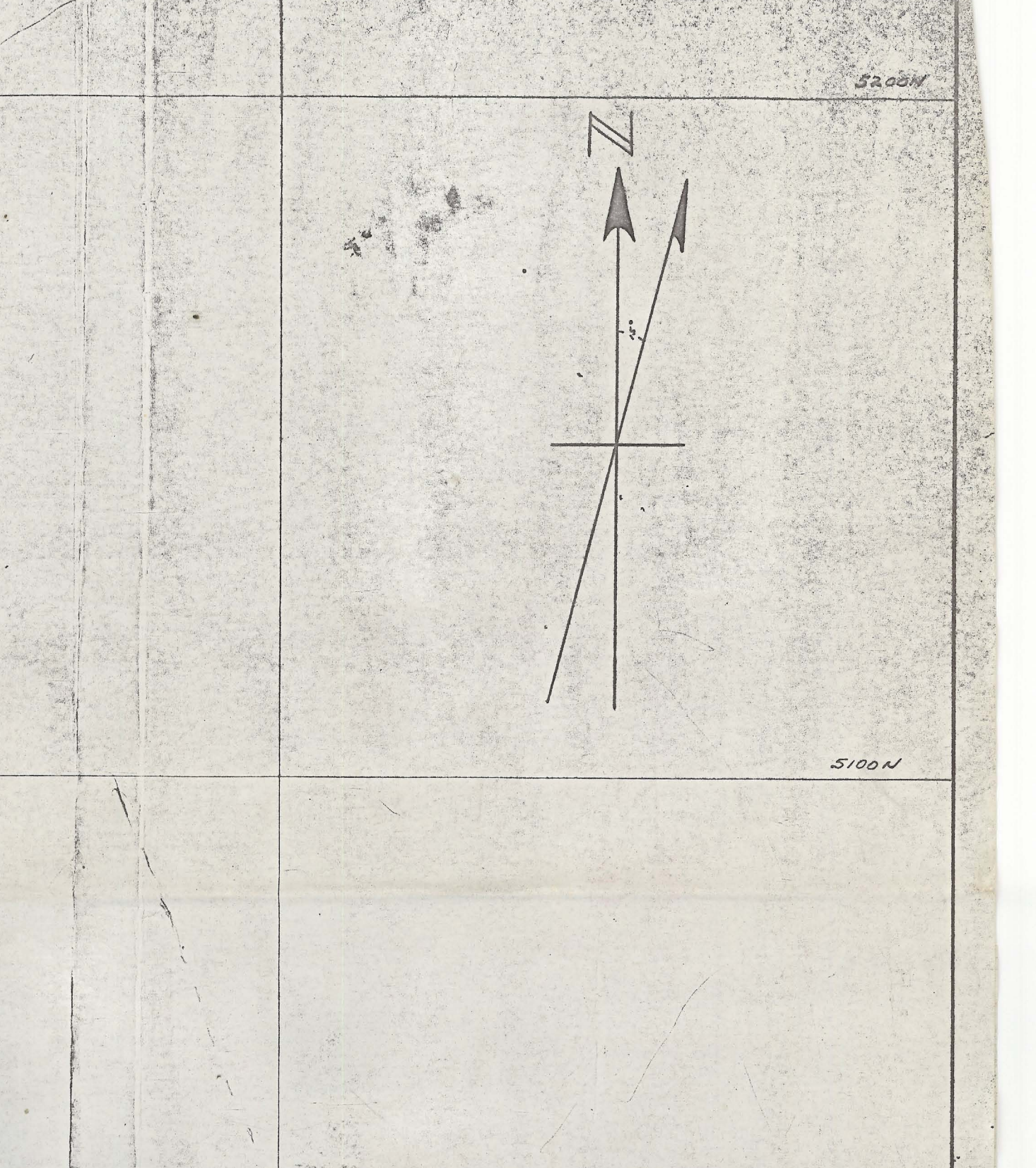
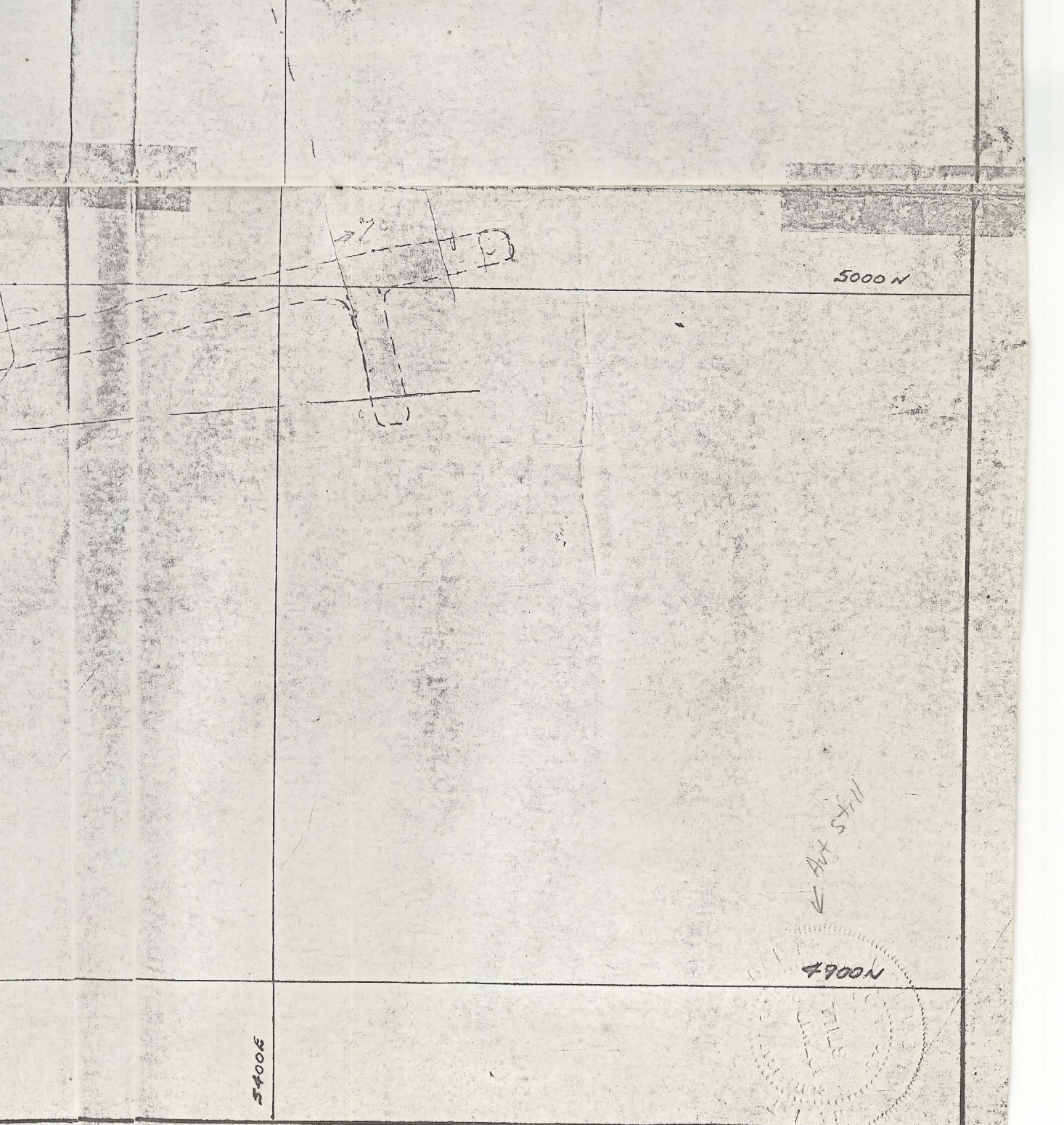


FIG. 2-CLAIM MAP EDWIN A. STONE  
 COYOTE CLAIMS - ROADSIDE MINE  
 PIMA COUNTY, ARIZONA  
 T-16-S R-8-E  
 SCALE 1" = 500'



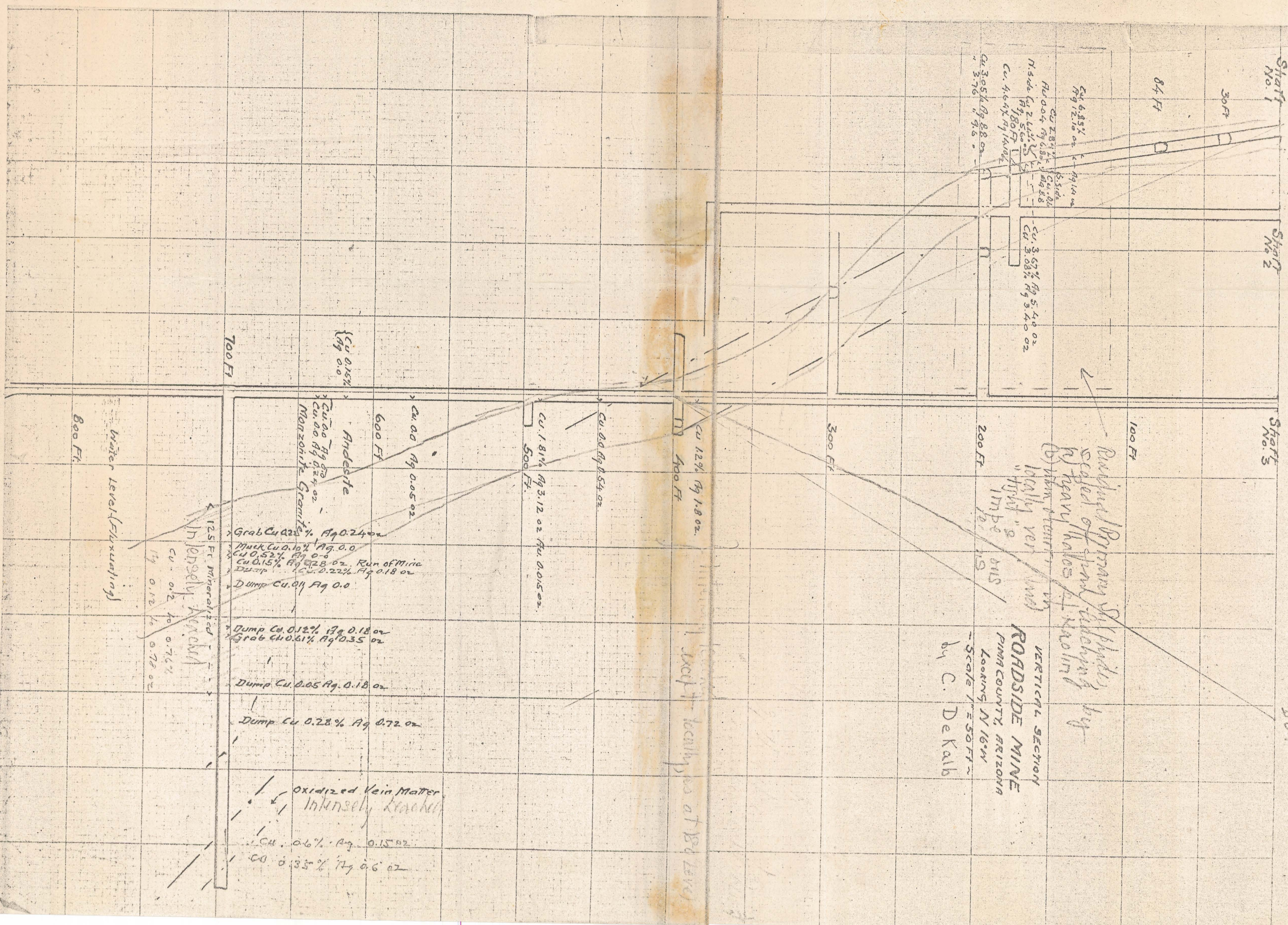


NOTE:  
SOLID DRIFT LINES FROM OLD MAPS,  
DOTTED OUTLINES, MINERALIZATION LIMITS  
OF FAULTS, LARGELY INFERRED FROM DE KARS  
REPORT. 0- 928.  
WORKINGS IN MINERALIZED MATERIAL, AND  
MINERALIZATION LIMITS, SHOWN IN RED.





green the oxidized zone



Shaft No. 1  
30 ft  
84 ft  
Cu 6.83% Ag 12.10 oz  
Cu 2.81% Ag 6.80 oz  
N side Cu 2.41% Ag 5.01 oz  
Cu 4.64% Ag 14.00 oz  
Cu 3.05% Ag 8.80 oz  
Cu 3.76% Ag 9.60 oz

Shaft No. 2  
100 ft  
300 ft  
400 ft  
500 ft  
600 ft  
700 ft  
800 ft

Shaft No. 3  
100 ft  
300 ft  
400 ft  
500 ft  
600 ft  
700 ft  
800 ft

Vertical Section  
ROADSIDE MINE  
PIMA COUNTY, ARIZONA  
Looking N 16 W  
Scale 1" = 50 ft  
by C. DeKalb

Run of Ore  
Scalped off and  
by heavy hoists  
locally very  
"light" ore  
100 ft  
150 ft  
200 ft  
250 ft  
300 ft  
350 ft  
400 ft  
450 ft  
500 ft  
550 ft  
600 ft  
650 ft  
700 ft  
750 ft  
800 ft  
850 ft  
900 ft  
950 ft  
1000 ft

Cu 0.15% Ag 0.00  
Andesite  
Cu 0.00 Ag 0.00  
Cu 0.00 Ag 0.00  
Monzonite Granite

Cu 0.00 Ag 0.05 oz  
600 ft

Cu 1.81% Ag 3.12 oz  
500 ft

Cu 0.00 Ag 0.54 oz  
400 ft

Cu 1.22% Ag 1.80 oz  
300 ft

Cu 0.12% Ag 0.18 oz  
200 ft

Cu 0.01% Ag 0.00  
100 ft

Cu 0.05% Ag 0.18 oz  
50 ft

Cu 0.28% Ag 0.72 oz  
0 ft

Cu 0.6% Ag 0.15 oz  
Cu 0.35% Ag 0.60 oz

Grab Cu 0.22% Ag 0.24 oz  
Muck Cu 0.10% Ag 0.00  
Cu 0.52% Ag 0.00  
Cu 0.15% Ag 0.28 oz Run of Mine  
Dump Cu 0.22% Ag 0.18 oz  
Dump Cu 0.01 Ag 0.00

Dump Cu 0.12% Ag 0.18 oz  
Grab Cu 0.61% Ag 0.35 oz

Dump Cu 0.05 Ag 0.18 oz

Dump Cu 0.28% Ag 0.72 oz

Oxidized Vein Matter  
Intensely Leached

Cu 0.6% Ag 0.15 oz  
Cu 0.35% Ag 0.60 oz

125 ft mineralized  
Intensely Leached  
Cu 0.12% Ag 0.18 oz  
Ag 0.12% Ag 0.78 oz

Water level (fluctuating)  
800 ft