



CONTACT INFORMATION

Mining Records Curator
Arizona Geological Survey
1520 West Adams St.
Phoenix, AZ 85007
602-771-1601
<http://www.azgs.az.gov>
inquiries@azgs.az.gov

The following file is part of the

Arizona Department of Mines and Mineral Resources Mining Collection

ACCESS STATEMENT

These digitized collections are accessible for purposes of education and research. We have indicated what we know about copyright and rights of privacy, publicity, or trademark. Due to the nature of archival collections, we are not always able to identify this information. We are eager to hear from any rights owners, so that we may obtain accurate information. Upon request, we will remove material from public view while we address a rights issue.

CONSTRAINTS STATEMENT

The Arizona Geological Survey does not claim to control all rights for all materials in its collection. These rights include, but are not limited to: copyright, privacy rights, and cultural protection rights. The User hereby assumes all responsibility for obtaining any rights to use the material in excess of "fair use."

The Survey makes no intellectual property claims to the products created by individual authors in the manuscript collections, except when the author deeded those rights to the Survey or when those authors were employed by the State of Arizona and created intellectual products as a function of their official duties. The Survey does maintain property rights to the physical and digital representations of the works.

QUALITY STATEMENT

The Arizona Geological Survey is not responsible for the accuracy of the records, information, or opinions that may be contained in the files. The Survey collects, catalogs, and archives data on mineral properties regardless of its views of the veracity or accuracy of those data.

PRINTED: 03/14/2003

ARIZONA DEPARTMENT OF MINES AND MINERAL RESOURCES AZMILS DATA

PRIMARY NAME: RINCON PEAK CLAY

ALTERNATE NAMES:

PIMA COUNTY MILS NUMBER: 1160

LOCATION: TOWNSHIP 16 S RANGE 17 E SECTION 28 QUARTER SE
LATITUDE: N 32DEG 00MIN 42SEC LONGITUDE: W 110DEG 36MIN 16SEC
TOPO MAP NAME: RINCON PEAK - 7.5 MIN

CURRENT STATUS: RAW PROSPECT

COMMODITY:
CLAY

BIBLIOGRAPHY:

ADMMR RINCON PEAK CLAY FILE
MOHAN, JOHN, 1979, CERAMIC MATERIALS IN
SOUTHERN ARIZONA, P. 8 GEO FILE
JANDERS, CAVID J., 1978, COMPARATIVE SEDIMENT-
OLOGY, STRATIGRAPHY, AND ECONOMIC POTENTIAL
OF TWO TERTIARY LACUSTRINE DEPOSITS IN ARIZ., AZ
ST UNIV. MASTER THESIS, (ADMMR GEOLOGY FILE)

12/29/92

ARIZONA DEPARTMENT OF MINES AND MINERAL RESOURCES FILE DATA

PRIMARY NAME: RINCON PEAK CLAY

ALTERNATE NAMES:

PIMA COUNTY MILS NUMBER: 1160

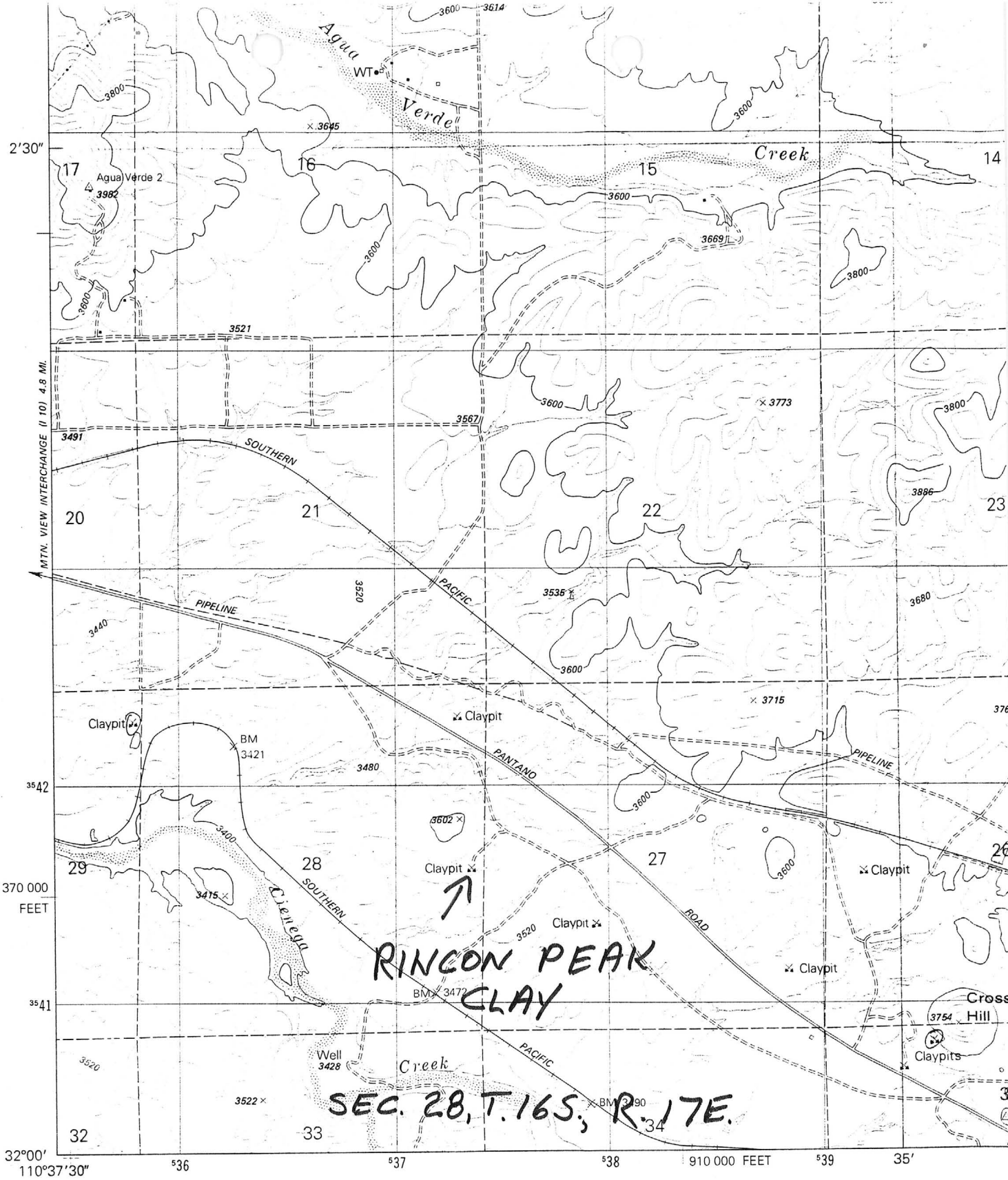
LOCATION: TOWNSHIP 16 S RANGE 17 E SECTION 28 QUARTER SE
LATITUDE: N 32DEG 00MIN 42SEC LONGITUDE: W 110DEG 36MIN 16SEC
TOPO MAP NAME: RINCON PEAK - 7.5 MIN

CURRENT STATUS: RAW PROSPECT

COMMODITY:
CLAY

BIBLIOGRAPHY:

ADMMR RINCON PEAK CLAY FILE
MOHAN, JOHN, 1979, CERAMIC MATERIALS IN
SOUTHERN ARIZONA, P. 8 GEO FILE



Mapped, edited, and published by the Geological Survey

Control by USGS and NOS/NOAA

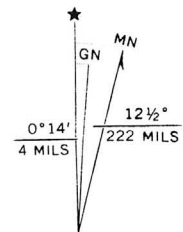
Topography by photogrammetric methods from aerial photographs taken 1975. Field checked 1976
Map edited 1981

Projection and 10,000-foot grid ticks: Arizona coordinate system, central zone (transverse Mercator)
1000-meter Universal Transverse Mercator grid, zone 12
1927 North American Datum

To place on the predicted North American Datum 1983
move the projection lines 7 meters south and
61 meters east as shown by dashed corner ticks

Where omitted, land lines have not been established

RINCON
PEAK
ARIZ
7 1/2'



UTM GRID AND 1981 MAGNETIC NORTH DECLINATION AT CENTER OF SHEET

(MOUNT FAGANI)
3847 / NW