



CONTACT INFORMATION

Mining Records Curator
Arizona Geological Survey
1520 West Adams St.
Phoenix, AZ 85007
602-771-1601
<http://www.azgs.az.gov>
inquiries@azgs.az.gov

The following file is part of the

Arizona Department of Mines and Mineral Resources Mining Collection

ACCESS STATEMENT

These digitized collections are accessible for purposes of education and research. We have indicated what we know about copyright and rights of privacy, publicity, or trademark. Due to the nature of archival collections, we are not always able to identify this information. We are eager to hear from any rights owners, so that we may obtain accurate information. Upon request, we will remove material from public view while we address a rights issue.

CONSTRAINTS STATEMENT

The Arizona Geological Survey does not claim to control all rights for all materials in its collection. These rights include, but are not limited to: copyright, privacy rights, and cultural protection rights. The User hereby assumes all responsibility for obtaining any rights to use the material in excess of "fair use."

The Survey makes no intellectual property claims to the products created by individual authors in the manuscript collections, except when the author deeded those rights to the Survey or when those authors were employed by the State of Arizona and created intellectual products as a function of their official duties. The Survey does maintain property rights to the physical and digital representations of the works.

QUALITY STATEMENT

The Arizona Geological Survey is not responsible for the accuracy of the records, information, or opinions that may be contained in the files. The Survey collects, catalogs, and archives data on mineral properties regardless of its views of the veracity or accuracy of those data.

PRINTED: 06/21/2002

ARIZONA DEPARTMENT OF MINES AND MINERAL RESOURCES AZMILS DATA

PRIMARY NAME: RILLITO LIMESTONE NOB

ALTERNATE NAMES:

PIMA COUNTY MILS NUMBER: 1163

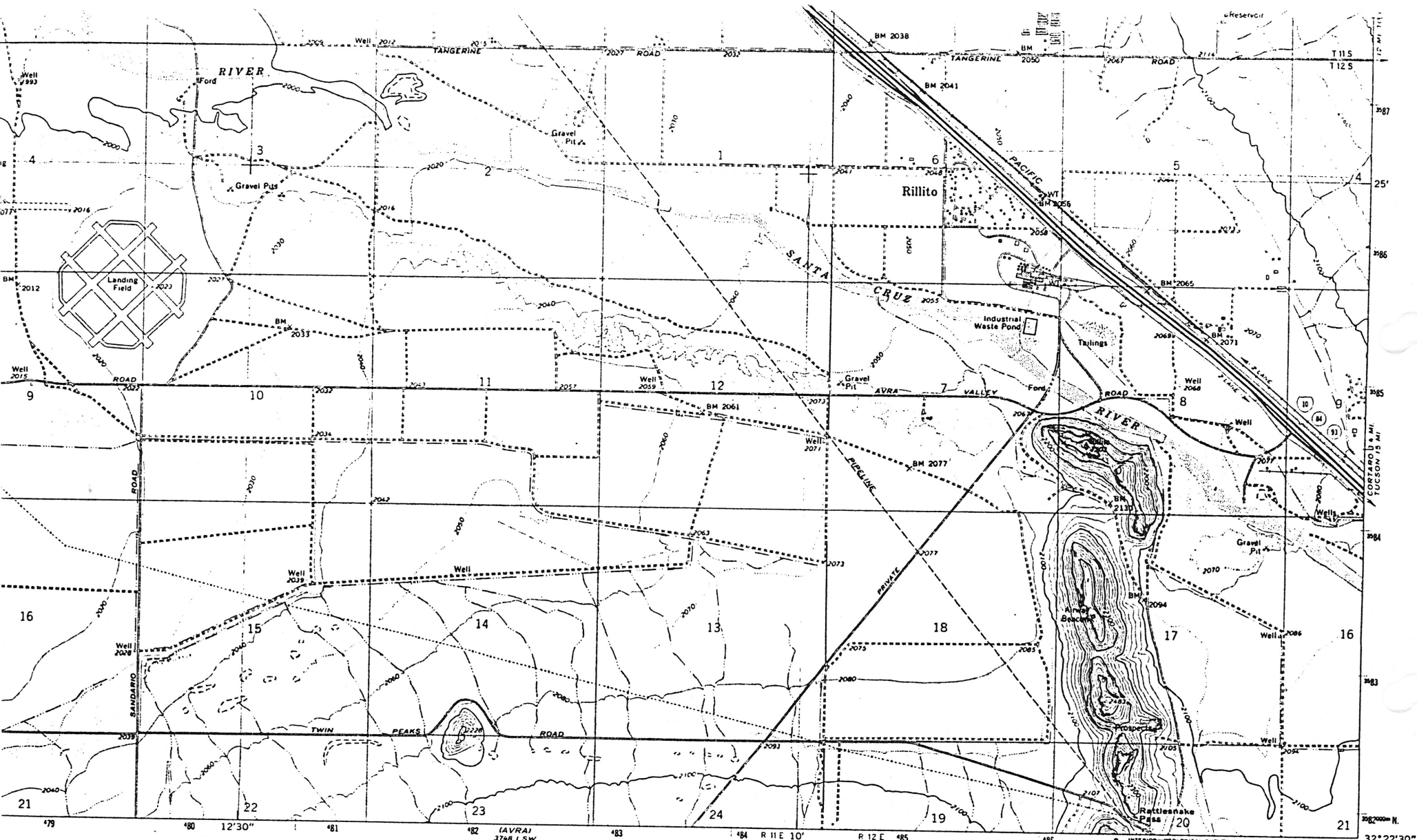
LOCATION: TOWNSHIP 12 S RANGE 11 E SECTION 14 QUARTER SW
LATITUDE: N 32DEG 22MIN 51SEC LONGITUDE: W 111DEG 11MIN 33SEC
TOPO MAP NAME: MARANA 7.5 MIN

CURRENT STATUS: EXP PROSPECT

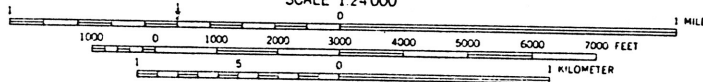
COMMODITY:
CALCIUM LIMESTONE

BIBLIOGRAPHY:

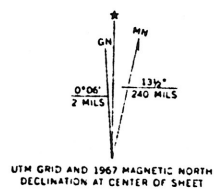
ADMMR RILLITO LIMESTONE NOB FILE
MC KITTRICK, M.A., 1988, SURFICIAL GEOLOGY OF
THE TUCSON METROPOLITAN AREA: AZ GEOL SUR
OPEN FILE RPT 88-18, 12 SHEETS, SHEET "E"
MARANA, AZ 7.5 MIN QUADRANGLE
DEPOSIT EXTENDS INTO SEC 23, T12S, R11E



SCALE 1:24 000



CONTOUR INTERVAL 20 FEET
 DOTTED LINES REPRESENT 10-FOOT CONTOURS
 DATUM IS MEAN SEA LEVEL



UTM GRID AND 1967 MAGNETIC NORTH
 DECLINATION AT CENTER OF SHEET

THIS MAP COMPLIES WITH NATIONAL MAP ACCURACY STANDARDS
 FOR SALE BY U.S. GEOLOGICAL SURVEY



QUADRANGLE LOCATION

ROAD CLASSIFICATION

- Heavy-duty —————
- Medium-duty - - - - -
- Unimproved dirt - - - - -
- Interstate Route (thick solid line with 'X' marks)
- State Route (thin solid line with 'X' marks)
- Light-duty —————
- Unimproved dirt - - - - -
- Interstate Route (thick solid line with 'X' marks)
- State Route (thin solid line with 'X' marks)

MARANA, ARIZ.

Property: Rillito Area

Location: Pima County, Az Twp 12S Range 11E
Section 14 & 23

The deposit is a small limestone nob approximately 4 miles north of the current Arizona Portland Cement quarry. The limestone showing is quite small with approximately 750,000 tons above the alluvial valley. There is no way of telling how much limestone is present without drilling, but chances of there being 20MM tons in an economically feasible pit are slim.

The deposit is approximately four miles west of the town of Rillito, Arizona where rail, electricity and gas are available. Haulage distance to Tucson would be 15 miles, with Phoenix being 110 miles.

This is a small 20 acre, 200 ft thick outcrop of Harquahala (Naco) limestone, striking N10W and dipping 85-45° east. The block is located just west of the northern tip of the Tucson mountains. This block is probably related to the isolated Paleozoic block of Escabrosa currently being mined at the Twin Peaks Quarry 1.75 miles to the south.

This limestone and the Twin Peaks Quarry limestone may have been implaced along high-angle thrust faults, which would indicate limestone reserves at depth. The Twin Peaks Quarry is located in a Paleozoic block made up of the Escabrosa and the Harquahala Formations. The quarry itself is in the Escabrosa.

Sample Values:

<u>Sample No</u>	<u>CaO%</u>	<u>MgO%</u>
A23986	52.9	.61

Recommendations: Because of its proximity to the Arizona Portland Cement Plant, who has its secondary quarry in the Silver Bell area near this limestone nob, and its small size, no further work is recommended.