



CONTACT INFORMATION

Mining Records Curator
Arizona Geological Survey
1520 West Adams St.
Phoenix, AZ 85007
602-771-1601
<http://www.azgs.az.gov>
inquiries@azgs.az.gov

The following file is part of the

Arizona Department of Mines and Mineral Resources Mining Collection

ACCESS STATEMENT

These digitized collections are accessible for purposes of education and research. We have indicated what we know about copyright and rights of privacy, publicity, or trademark. Due to the nature of archival collections, we are not always able to identify this information. We are eager to hear from any rights owners, so that we may obtain accurate information. Upon request, we will remove material from public view while we address a rights issue.

CONSTRAINTS STATEMENT

The Arizona Geological Survey does not claim to control all rights for all materials in its collection. These rights include, but are not limited to: copyright, privacy rights, and cultural protection rights. The User hereby assumes all responsibility for obtaining any rights to use the material in excess of "fair use."

The Survey makes no intellectual property claims to the products created by individual authors in the manuscript collections, except when the author deeded those rights to the Survey or when those authors were employed by the State of Arizona and created intellectual products as a function of their official duties. The Survey does maintain property rights to the physical and digital representations of the works.

QUALITY STATEMENT

The Arizona Geological Survey is not responsible for the accuracy of the records, information, or opinions that may be contained in the files. The Survey collects, catalogs, and archives data on mineral properties regardless of its views of the veracity or accuracy of those data.

01/10/97

ARIZONA DEPARTMENT OF MINES AND MINERAL RESOURCES FILE DATA

PRIMARY NAME: REYMERT

ALTERNATE NAMES:

ALASKA SHAFT
AUSTRALIA
DENOON PROPERTY
DEVOUX PROPERTY

PINAL COUNTY MILS NUMBER: 183

LOCATION: TOWNSHIP 2 S, RANGE 11 E SECTION 22 QUARTER E2
LATITUDE: N 33DEG 14MIN 12²⁰SEC LONGITUDE: W 111DEG 12MIN 10SEC
TOPO MAP NAME: MINERAL MTN - 7.5 MIN

CURRENT STATUS: PAST PRODUCER

COMMODITY:

AG
MN
CU
PB
ZN
SI SILICA FLUX

BIBLIOGRAPHY:

SCHMIDT, EBERHARD, GEOLOGY OF THE MINERAL MTN
QUAD PINAL CO. AZ., UOFA THESIS 1967
ADMMR REYMERT MINE FILE
ROMSLO, T. & S. RAVITZ AZ MANGANESE-SILVER
ORES USBM RI 4097, 1947, P. 10-13
FARNHAM, L. & OTHERS, MANGANESE DEPOSITS OF
EASTERN AZ USBM IC 7990, 1961, P. 143-144
ADMMR U FILE, PINAL AG3
USAEC PRELIM. RECONN. REPORT 172-488, 1953
P. 14
DUNNING, CHARLES H., SILVER FROM SPANISH
MISSIONS TO SPACE AGE MISSILES, 1966, P. 106
AZBM BULL 129, P. 86
SEE: ADMMR OKLAHOMA GROUP FILE (SILVER BAR
MINE REPORT, P. 12)

479

480

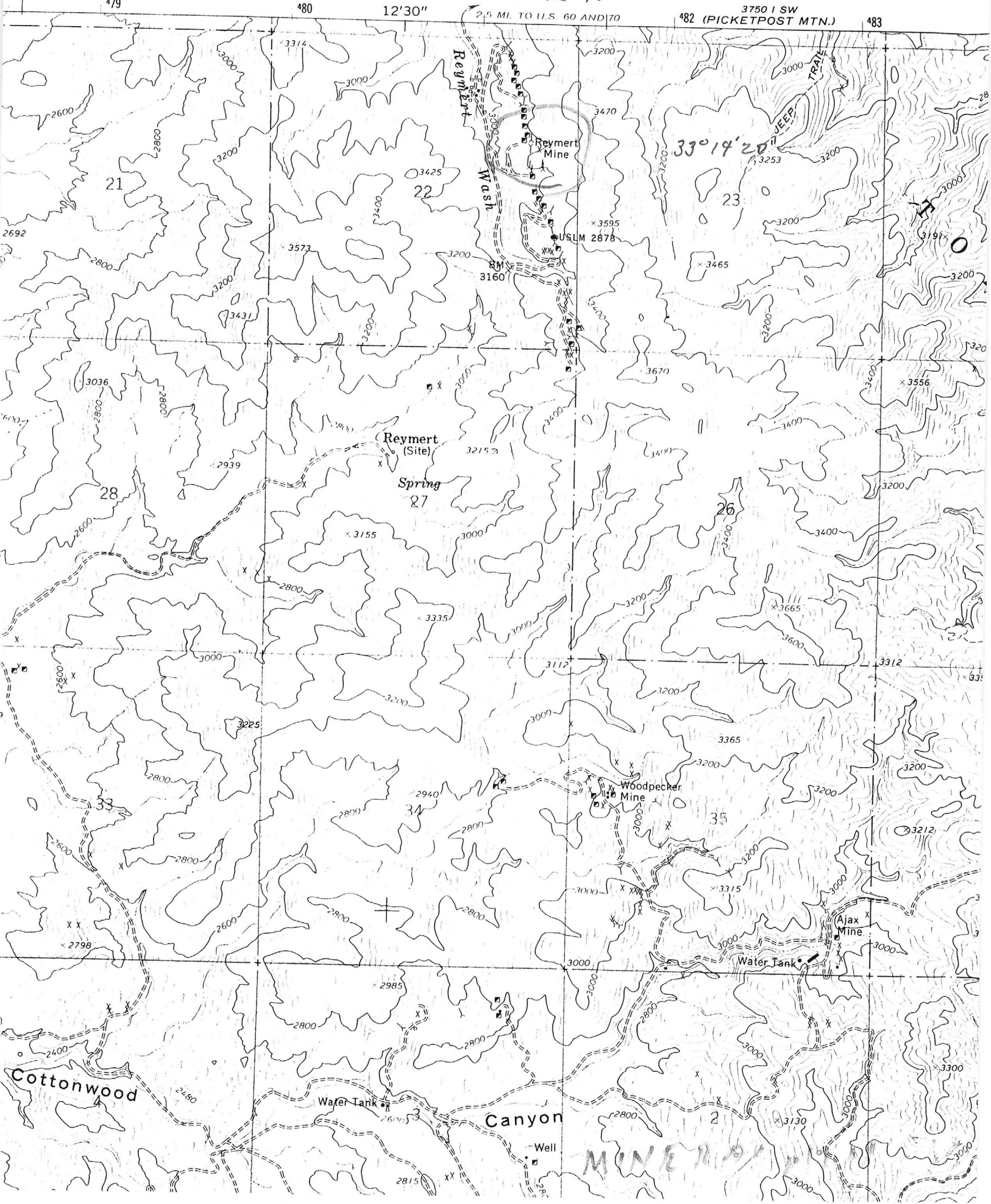
12'30"

111° 12' 10"

2.5 MI. TO U.S. 60 AND 70

3750 I SW
482 (PICKETPOST MTN.)

483



Cottonwood

Canyon

MINE ROAD

Arizona Department of Mines and Mineral Resources

INFORMATION FROM MINE CARDS IN MUSEUM

ARIZONA

PINAL COUNTY

Superior
~~Raymert Mine~~

Raymert

MILS #183

4- AKA's

Raymert mine (file)

MM 6271 Galena

MM N 020 Cuprite

MM ~~N 021~~ Quartz

M 910 Fornicite

ABSTRACTED FROM ADMMR ACTIVE MINES DIRECTORY, 1988

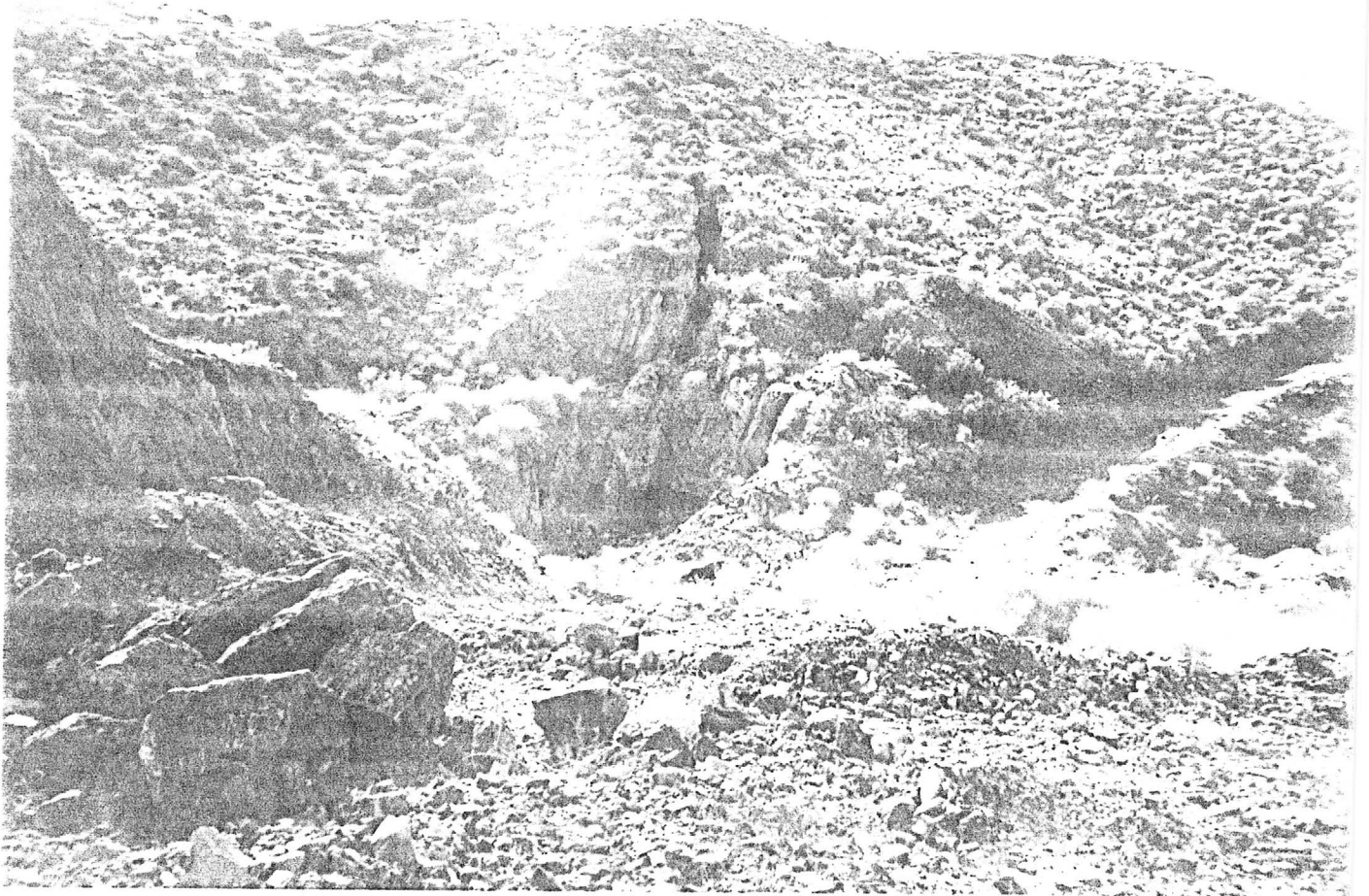
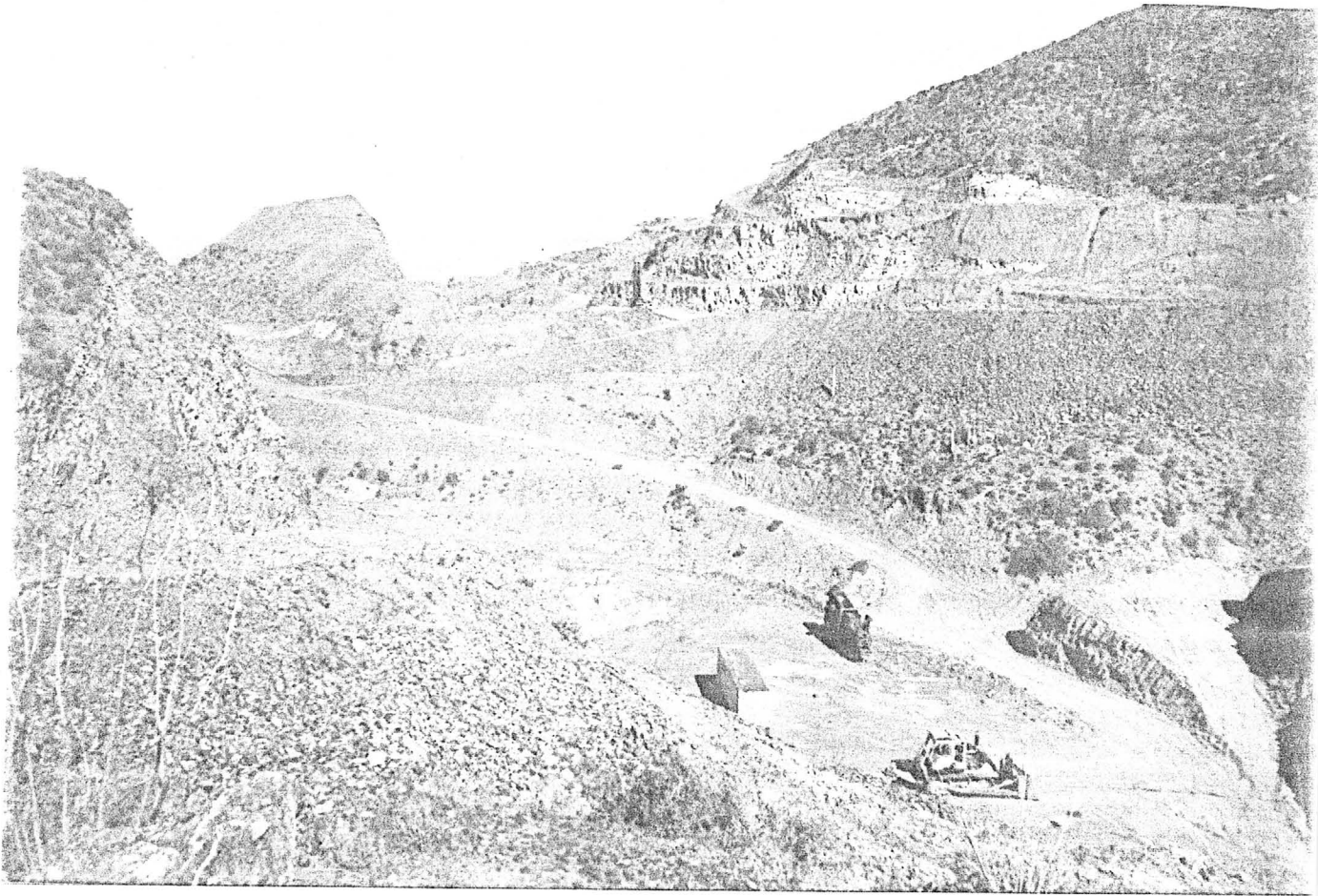
TRIPLE NICHOL INC.

R.R. 1, Box N 123, Globe - Phone 425-7006 - Employees 75.

President Monty Nichols

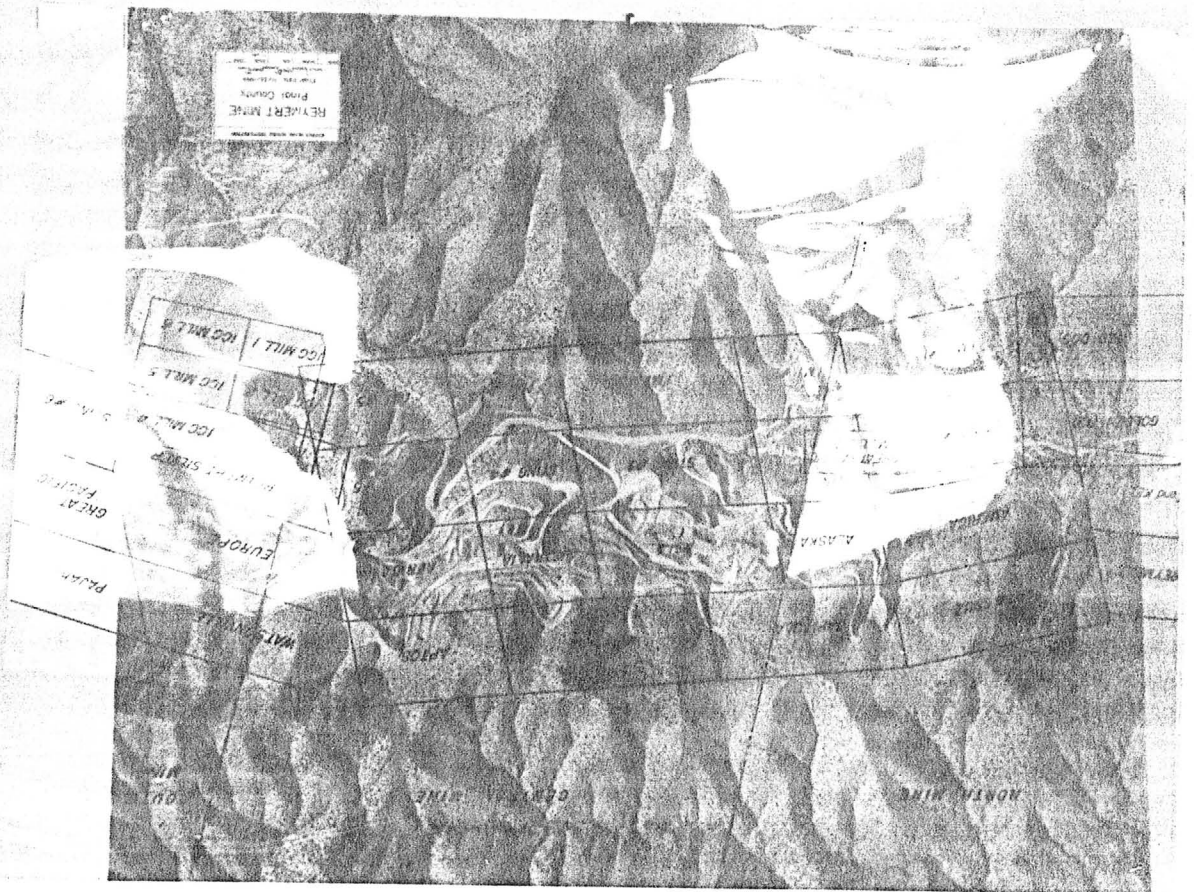
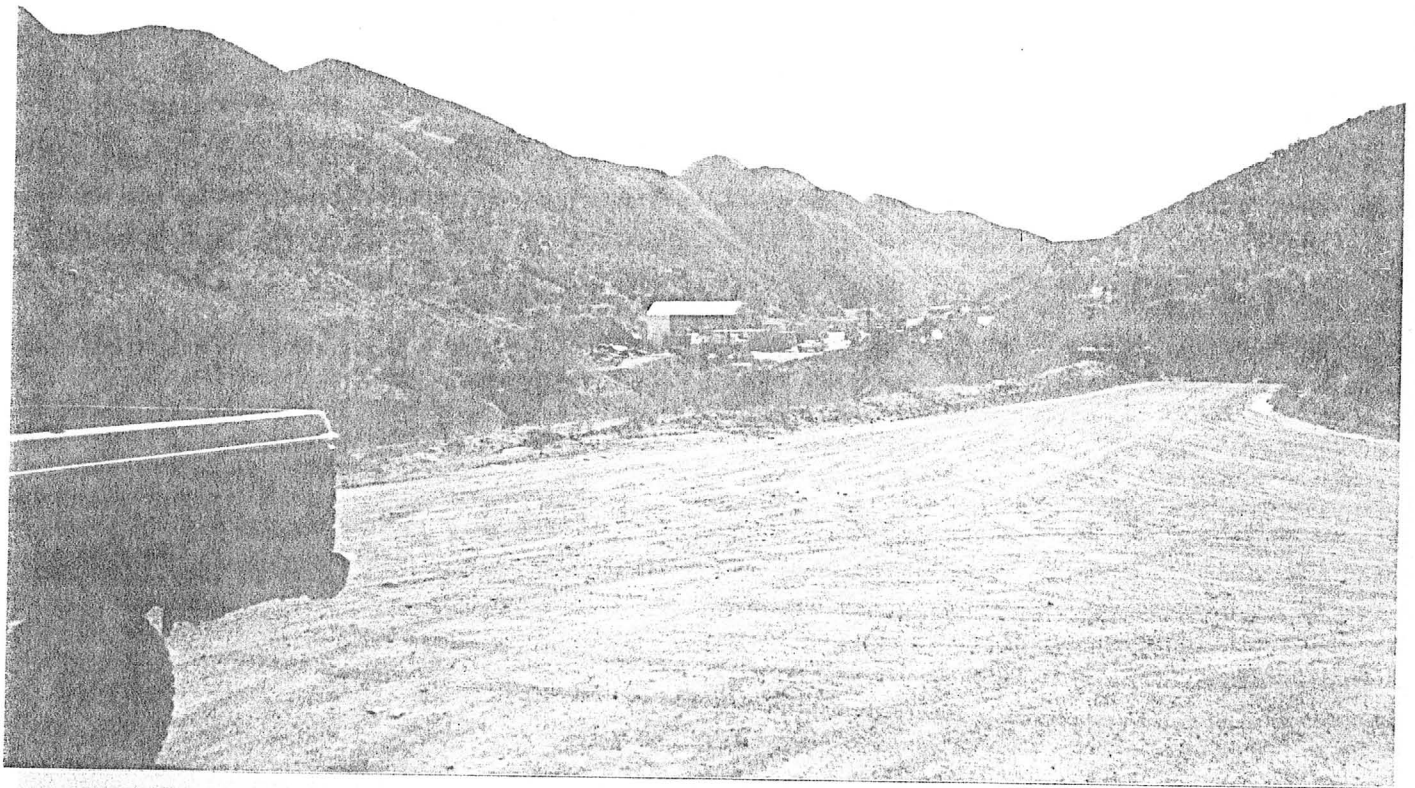
Copper Hill Mine TIN R15E Sec. 15
Silica flux for copper smelters - Northwest of Globe.

Reymert Mine T2S R11E Sec. 22
Silver bearing silica flux for copper smelters - West of Superior.



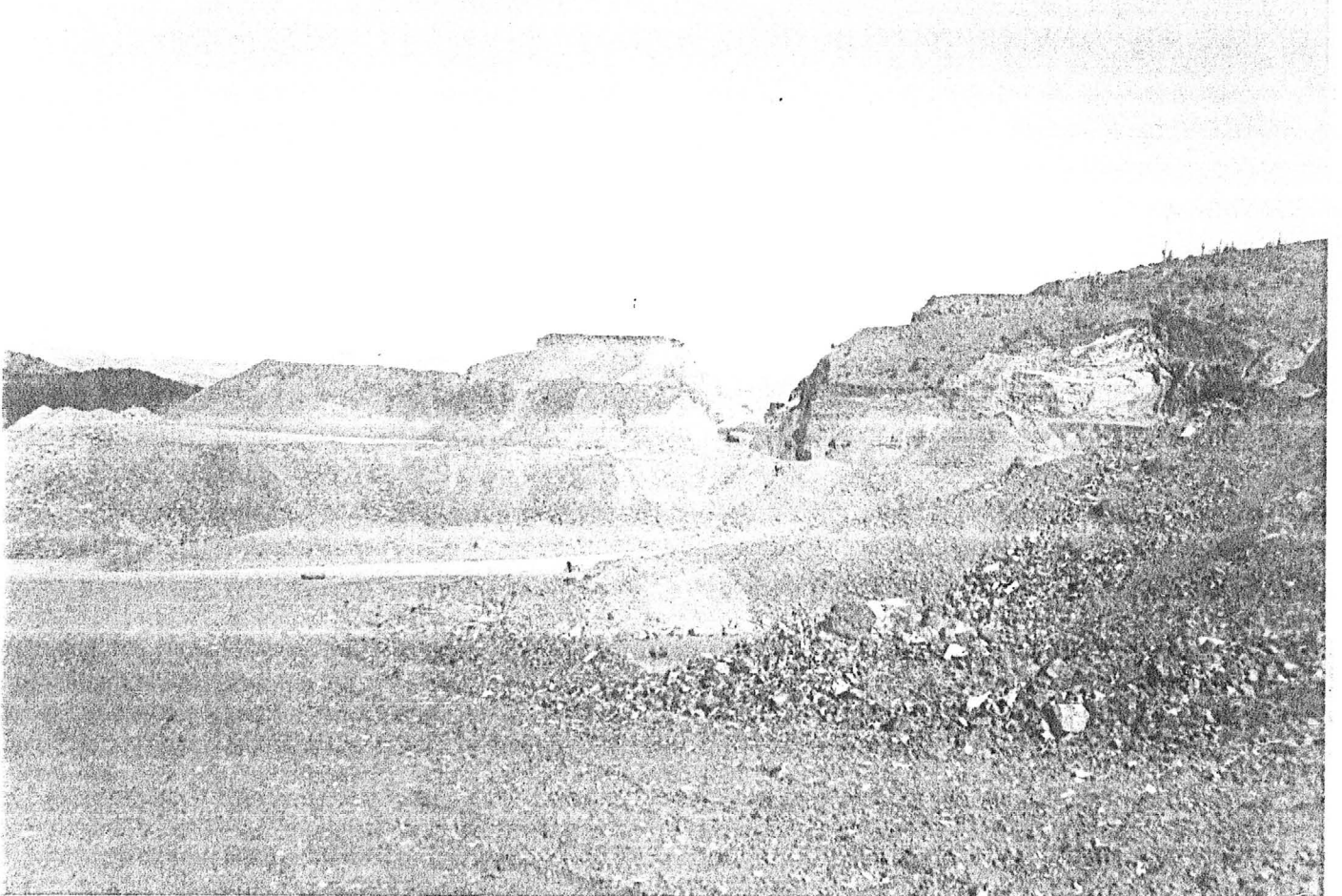
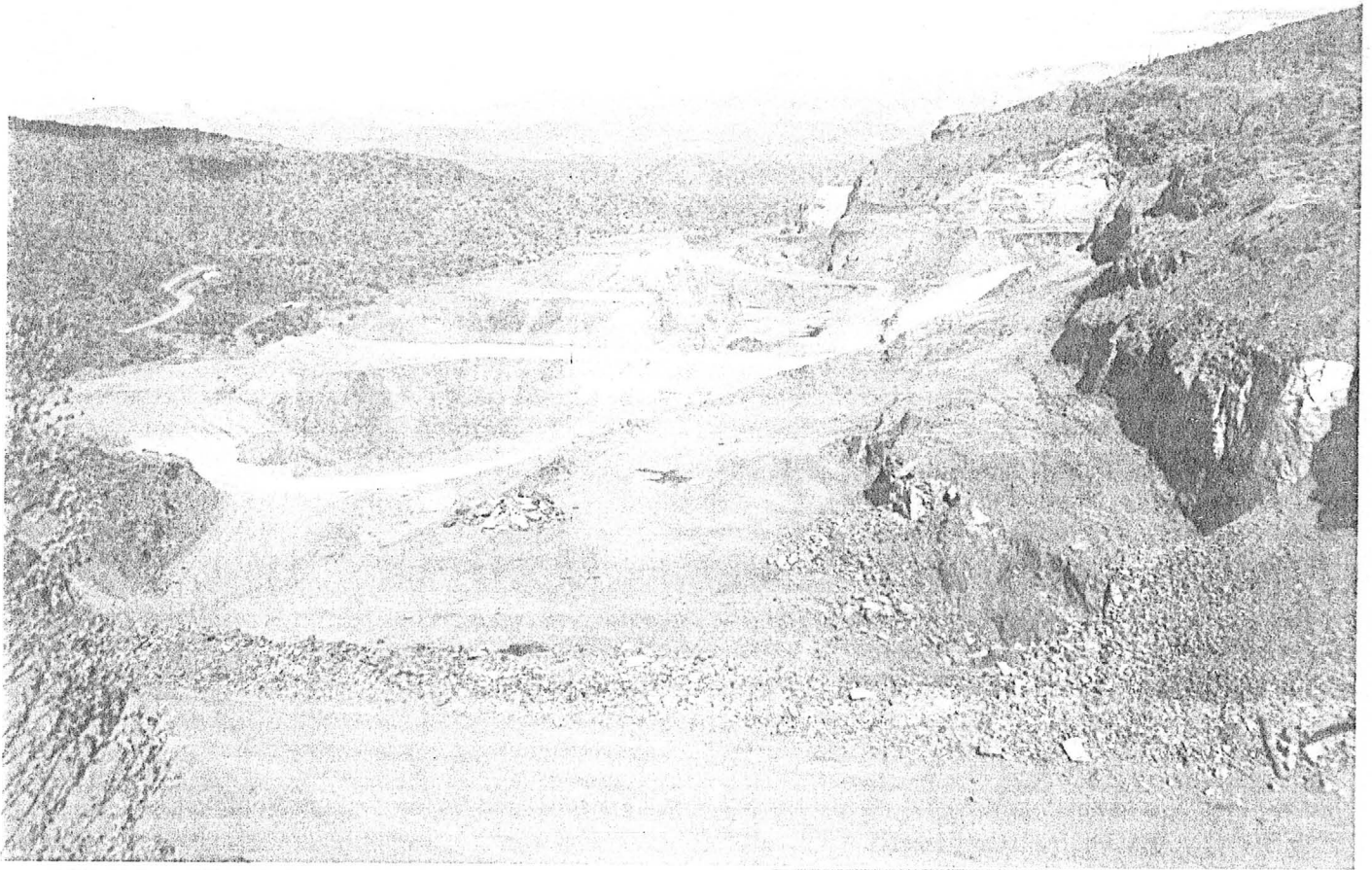
















DEPARTMENT OF MINERAL RESOURCES

STATE OF ARIZONA

FIELD ENGINEERS REPORT

Mine REYMERT MINE

Date 2/17/65

District MINERAL HILL DIST. PINAL COUNTY

Engineer Lewis A. Smith

Subject: Mine Visit and Conference with August Kaempf, Neil B. McGinnis 2/17/65.

LOCATION: Secs. 15, 22, 23, 26 and 27, T2S, R11E.

ACCESS: Travel 5.2 miles from Superior via Hwy 60-70, thence south on a graded dirt road for 1 3/4 - 2 miles to old camp.

OWNERS: Reymert Mining Co. (51 percent controlled by DeVaux Estate).

AGENT: Neil B. McGinnis, Secretary and Treasurer, McGinnis, Neil B., Equipment Co., 500 S. Central Ave., Phoenix, Arizona (PH 258-5391).

LESSEE: Phelps Dodge Corp., Douglas, Arizona (P.O. Box 872).

CONSULTANT for Reymert Mining Co., Charles P. Field, 3051 Sagehen Court, Indian Ridge Terrace, Tucson, Arizona.

PRODUCTION: 175,000 tons of ore running 15.5 ounces of silver to the ton with 1 1/2 - 4 percent Mn. Most of this was shipped to smelters at Superior and Miami, about 10,000 tons being classed as manganiferous ore averaging 2.5 percent Mn. According to U.S. Bur. of Mines, RI 4097, (July 1947) p 13-14, the Reymert produced 2,284,000 ounces of silver up to 1945. A very small production was made since.

HISTORY: The Reymert was discovered in 1885 by John Reymert. Production began shortly afterward and continued, intermittently up to 1950. Shortly after 1886 the Reymert was controlled by a Mr. Van Dyke, of Milwaukee, Wisc., and operated continuously until 1891. During part of this interval some of the ore was treated by chloridization and pan-amalgamation. In 1912, Gunn Thompson interests obtained a purchase-option and during 1912-1913 the 410-foot Alaska shaft was sunk, and they continued exploration until 1919-1920. During this period an affiliate of Thompson's, Lincoln Issues Co., and Magma Copper Company put down several drill holes.

In 1925 W. Forbach et al leased the property, and intermittently operated the mine until the middle of 1944, when Norman De Vaux (who died in 1964) acquired 51 percent of the stock in the Reymert Extension Mining Company, Inc.

In early 1964, Phelps Dodge Corporation took a lease-option on the property and since then has drilled two diamond holes. The first was drilled at an incline angle of 56 deg. E and reached a little over 2200 feet. The second was completed in February 1965 and reached 1882 feet and is vertical. Sprague-Henwood Drilling Co. of Salt Lake City, Utah, did the drilling. The first hole was figured to reach 3000 feet but tool trouble caused its abandonment. Both holes were stopped in diabase.

PLANS: According to Neil McGinnis, Phelps Dodge plans to sink a third hole to 3000, or more feet. This time they plan to drill the first 2000 feet by churn drill and case the hole. Then they will proceed deeper by diamond drill.

RESERVES: G. M. Colvocoresses estimated (1945) reserves of 300,000 to 500,000 tons that would contain 8-10 oz. silver per ton and 3-5 percent Mn.

ABSTRACTED FROM ADMMR ACTIVE MINES DIRECTORY, 1989

Penal County

TRIPLE NICHOL INC.

R.R. 1, Box N 123, Globe, 85501 - Phone 425-7006 - Employees 75.

President Monty Nichols

Reymert Mine

T2S R11E Sec. 22
Silver bearing silica flux for copper smelters - West of Superior.

ARIZONA DEPARTMENT OF MINES AND MINERAL RESOURCES

VERBAL INFORMATION SUMMARY

Information from: Jeff Vickers, President

Company: GeoResources, Inc.
Address: P.O. Box 1505
City, State ZIP: Williston, North Dakota
Phone: 701-572-2020

MINE: Reymert

ADMMR Mine File: Reymert Mine
County: Pinal
AzMILS Number: 183

SUMMARY

Jeff Vickers reported his company, GeoResources, owns both the 7 patented claims and the 14 unpatented claims which comprise the Reymert mine.

He is attempting to assemble details of the production of smelter flux by Triple Nichol Contracting for Inspiration and subsequently Cyprus. He has compared our mine file data to that he believes he has and is getting ours copied and will copy those he has which we do not.

Cyprus is no longer producing smelter flux from the property due to the low silver price.

Instead of closing their operating plan with the Forest Service and reclaiming the unpatented claims, they have modified the plan to hold the operation on a care and maintenance basis.

Ken A. Phillips, Chief Engineer Date: December 11, 1992

STATE OF ARIZONA
DEPARTMENT OF MINERAL RESOURCES
MINERAL BUILDING, FAIRGROUNDS
PHOENIX, ARIZONA 85007



May 2, 1966

Mr. Ralph G. Applegate
624 Post Street
San Francisco, Calif.

Dear Sir:

The last activity at the Reymert Mine was in February, 1965, when Phelps Dodge Corporation completed drilling two deep holes on the Reymert. The holes did not give satisfactory results.

One hole (1) was sunk 2,200 feet, but did not reach the mineralized zone, since attempts to wedge the hole in that direction were unsuccessful. The second hole (2) reached 1,882 feet, and was on the opposite side of the mineralized zone. Here, also, attempts to wedge the hole over to the mineralized area failed. Neither hole had mineralization of much consequence. Since then the mine has not been active and much equipment was moved off, for safe keeping.

Mr. Neil B. McGinnis, Secretary & Treasurer, is still active, but stated that he had not received your last letter and that he had corresponded with you several times before.

Mr. Norman de Vaux, who controlled the property, died about a year ago in Florida.

Hoping this will help, I remain,

Very truly yours

Lewis A. Smith
Field Engineer

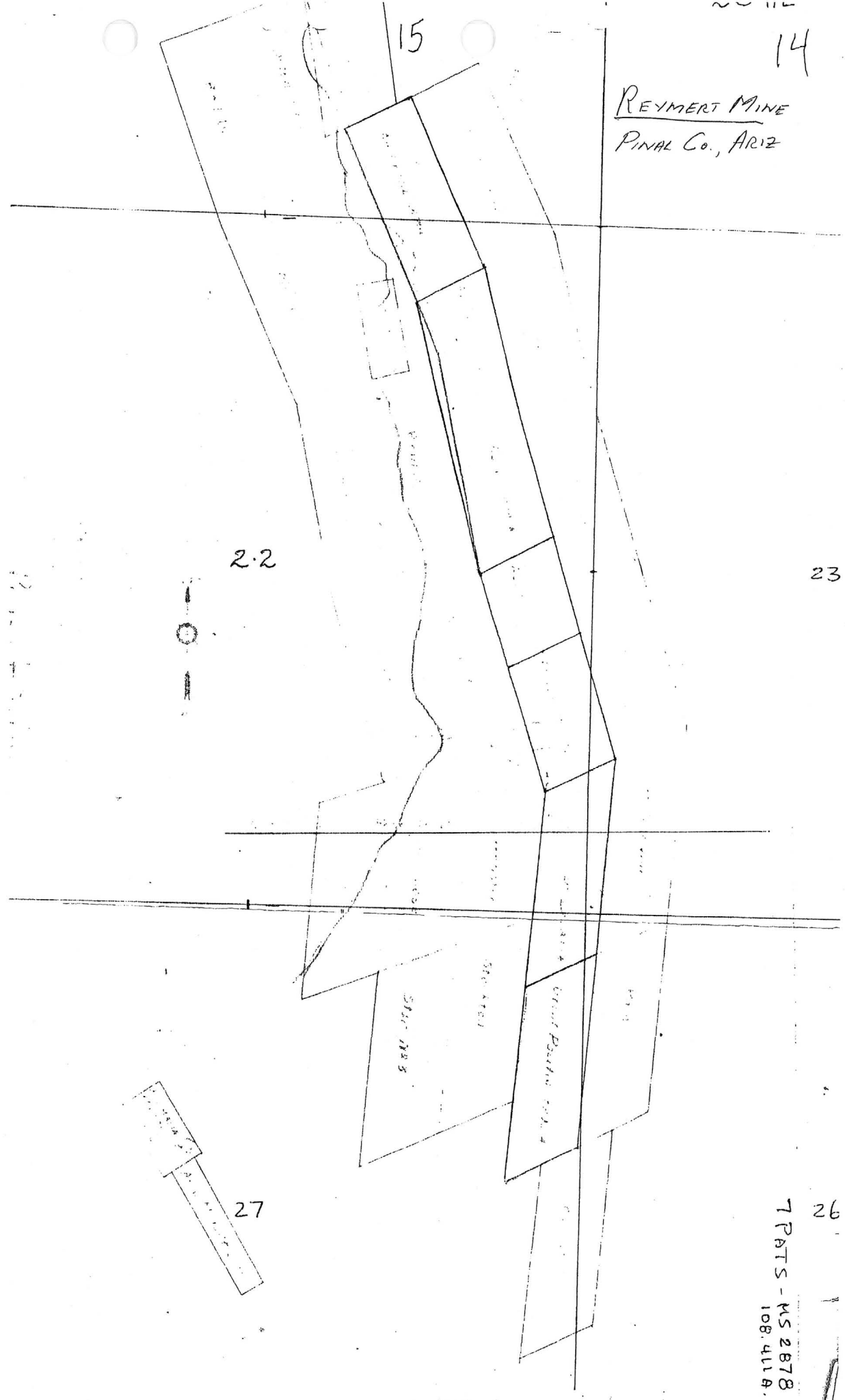
LAS:lm

C
O
P
Y

14

REYMERT MINE
PINAL Co., ARIZ

15



22

23

27

26

7 PATS - MS 2878
108,411A.

REYMERT

PINAL COUNTY

NJN WR 2/20/87: Janice Coggin (c) reports that Inspiration Consolidated Mines (file) now owns the Reymert (file) Pinal County. The property is producing 6 oz ton Ag material for the Inspiration smelter. Inspiration has done drilling for additional reserves although Mrs. Coggin was unaware of their exact reserve figures.

NJN WR 4/17/87: Contacted Nichols Development Corporation (card) of Globe. They report they are mining 1000 tons per week at the Reymert Mine (file) Pinal County. The material is just crushed, no other processing, before being sent to the Inspiration smelter as flux. The Department engineers were invited to visit the property.

REYMERT MINE

PINAL COUNTY

KAP WR 2/10/84: In the company of Jack Pursley a visit was made to the Reymert Mine. The mine is currently active. A separate report has been written.

KAP WR 9/14/84: John Robertson, Phelps Dodge Corporation, New Cornelia Mine, Ajo, Arizona reported that Phelps Dodge had an option on, and drilled the Reymert Mine (f) Pinal County in 1962.

NJN WR 9/14/84: It was reported that K and D Engineering has a pilot mill project at the Reymert Mine (f) Pinal County to provide an upgraded flux product for Inspiration's smelter.

(low grade Mn stockpile - not slag)

KAP WR 5/17/85: Jesse Patten and Mr. Tanner visited the office to learn about leaching gold. They report that the "slag" at the Reymert Millsite, Pinal Co. runs 0.35 oz/ton gold and 4 or 5 oz/ton silver and is very porous and breaks easily. They had a leach test run by someone whose name they have forgotten and now want to build a pilot heap pad for about 5 to 10 tons to see if they can extract the gold. I suggested that the first thing they should do is cut some representative samples and have them assayed by a registered assayer. They displayed a lack of confidence in registered assayers which I tried to dispell. That aside, I explained the cyanide leaching process and its variations to them as best I could and pointed out the most pertinent sections of our "Cyanide Book" for them to read and/or make copies.

MG WR 7/26/85: The Canadian Mines Handbook, 1985-86, reports Plexus Resources Corp., 780, 175 SW Temple St., Salt Lake City, Utah 84101, has a royalty interest in the Reymert mine (Pinal Co) company to receive royalty payments up to \$620,000 to be paid \$500/mo until Aug 1, 1984, then \$2,500/mo or 3.5% net smelter return. Reserves suitable for open pit: 936,000 tons averaging 4.48 oz Ag/ton.

REYMERT MINE

PINAL COUNTY

MG WR 9/24/82: Mr. Dick Wilber of the Tucson Citizen reports that the Reymert mine in Pinal County, owned by Plexus Resources of Salt Lake City, Utah, has been optioned to Inspiration Consolidated Copper Company.

RRB WR 12/3/82: It was reported that the Inspiration Development Company is trying to develop the Reymert Mine, Pinal County for flux for the Inspiration smelter and ASARCO's smelter at Hayden.

MG WR 12/31/82: It is reported that the Inspiration Mines Co. (Subsidiary of Inspiration Consolidated Copper Co.) began mining in about June 1982, silver-bearing siliceous flux ore from the Reymert Mine, Pinal County.

MG WR 2/11/83: Visited the Reymert Mine, Pinal County. Inspiration drove two 10 x 12-ft. declines on the property during 1982. These declines, the upper and the lower, are in the SE $\frac{1}{4}$ NE $\frac{1}{4}$, Sec. 22, T2S R11E. Production of siliceous flux was chiefly from the Blue Vein, a subsidiary structure to the Main Vein. The Blue Vein assayed 4-10 oz. Ag/ton. The vein also assays up to about one percent fluorine, occurring as fluorite. Since fluorine is harmful to the Inspiration smelting process and is also deleterious to the production of sulfuric acid, Inspiration ceased mining at the Reymert. According to Mr. David Chapman, the project manager, some long-hole drilling may be done in February or March 1983.

NJN WR 2/4/83: Don Guest reported that Geology Resources owned by Todd H Spargo, produced 100,000 oz. of silver during 1976-77 at the Reymert Mine, Pinal County.

NJN WR 12/9/83: David S. Cook, Inspiration Mines, Box 1559, Claypool, AZ 85532, visited and reported Inspiration is drilling for reserves at the Reymert Mine. Triple N. Enterprises (Monty Nichols) has mined over 10,000 tons of flux there in the last 1 $\frac{1}{2}$ years.

MARK

4015 N 15TH AV

MARK V, INC. BUSINESS CONSULTANTS - 6125 EAST INDIAN SCHOOL RD. - P. O. BOX 143 - SCOTTSDALE, ARIZONA 85252 - (602) 945-5579

BUSINESS CONSULTANTS

Handwritten: Hugh Olmstead
12 AUGUST 1969
602-425-6359
globe

Handwritten: 602-9473

To - BOARD OF DIRECTORS - REYMART SILVER MINES
FROM - THEO. X. TERHAAR, SECRETARY

THE ARIZONA DEPARTMENT OF MINERAL RESOURCES
MAINTAINS A PUBLIC RECORD OF THE ACCURACY
OF THE CONTENTS OF THESE DOCUMENTS.

A MEETING OF THE BOARD OF DIRECTORS OF THE
REYMART SILVER MINES HAS BEEN CALLED FOR
SATURDAY, AUGUST 23, 1969 AT 10 A.M. IN THE
MORNING, IN THE OFFICE OF THE SECRETARY -
6125 EAST INDIAN SCHOOL ROAD, SCOTTSDALE,
ARIZONA - SUITE 1008.

Handwritten: Reymart
Extension
Silver
mine

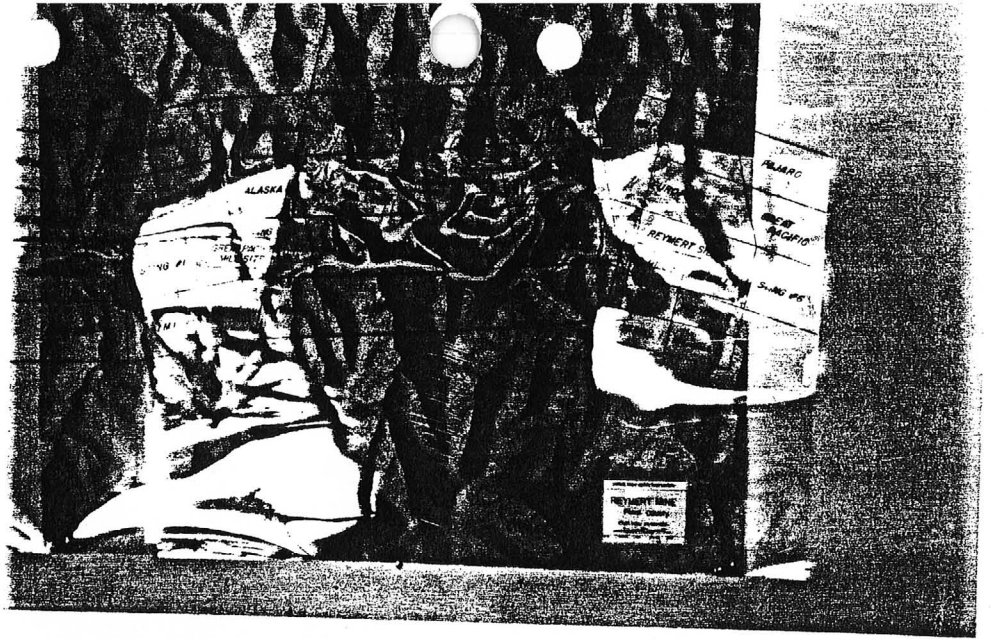
Handwritten: Geo
Holand Hill
John

AUTHORIZED MORTGAGE BROKER FOR
The Prudential Insurance Company of America

JACKSON DIGGS
REALTOR

WE 5-3978
606 SO. WINDSOR BLVD.
LOS ANGELES, CALIF. 90005

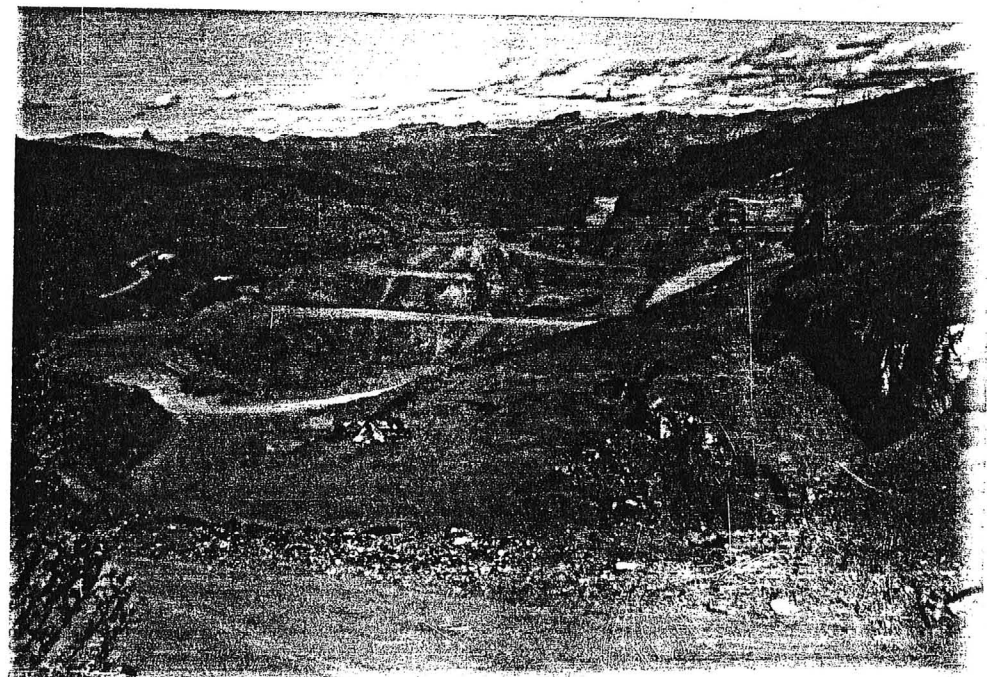
Reymert Mine
Photo in office
2/2/89



Reymert Mine
Looking southeast
2/2/89



Reymert Mine
Looking north
2/2/89



(Originals in photo file)

* GENERAL REFERENCES

- REFERENCE 1 F1 < USBM-ABGMT PRODUCTION FILE DATA >
 REFERENCE 2 F2 < USBM DISTRICT SHEET # 597 SE, 1/2, T, 25, R, 11E >
 REFERENCE 3 F3 < ABGMT CLIPPINGS FILE DATA >
 REFERENCE 4 F4 < ARIZONA DEPARTMENT OF MINERAL RESOURCES FILE DATA >

L110 < USBM-ABGMT LISTS AS PAST OPERATORS REYMERT EXTENSION SILVER MINE (1946), JAMES TODD, W.J. FALBACH, W. FALBACH AND A. HABSTATT (1935), REYMERT MINING CO. (1930), JACKSON, DIGGS, COOLEY AND HICKS (1927) >

- F5 < USBM FILE DATA CLUSTER # 899 >
 F6 < FARNHAM, L., USBM I.C. # 7990, p. 143-144 >
 F7 < ROMSLO, T. AND RAVITZ, S., USBM R.I. 4097, 1947, p. 10-13 >
 C30 < CERARGYRITE ARGENTITE, FLUORITE >
 M10 < IN PLACES WIDEN INTO LENSES >

U.S. CRIB-SITE FORM

RECORD IDENTIFICATION

RECORD NUMBER B10 < _____ > RECORD TYPE B20 < X, I, M > DEPOSIT NUMBER B40 < _____ >
 REPORT DATE G1 < 82, 10, 3 > INFORMATION SOURCE B30 < L, 2 > FILE LINK IDENT. B50 < USBM-00402, 1043 >
 REPORTER(SUPERVISOR) G2 < LARABA, PETER > < GEST, DON >
 (last, first, middle initial) (last, first, middle initial)
 REPORTER AFFILIATION G5 < ABGMT > SITE NAME A10 < REYMERT MINE >
 SYNONYMS A11 < ALASKA SHAFT >

LOCATION

MINING DISTRICT/AREA A30 < MINERAL HILL DISTRICT >
 COUNTY A60 < PINAL > STATE A60 < AZ > COUNTRY A40 < U.S. >
 PHYSIOGRAPHIC PROV A63 < L, 2 >
 DRAINAGE AREA A62 < L5050100 > LAND STATUS A64 < O, 1, 2, 3, 4, 5, 6, 7, 8, 9 >
 QUADRANGLE NAME A90 < MINERAL MOUNTAIN (1964) > QUADRANGLE SCALE A100 < 24000 >
 SECOND QUAD NAME A92 < PICKETPOST MOUNTAIN (1948) > SECOND QUAD SCALE A91 < 24000 >
 ELEVATION A107 < 3200 FT >

UTM ACCURACY GEODETTIC
 NORTHING A120 < 3678210 > ACCURATE ACC (circle) ESTIMATED EST < _____ > LATITUDE A70 < _____ N >
 EASTING A130 < 481260 > LONGITUDE A80 < _____ W >
 ZONE NUMBER A110 < 112 >

CADASTRAL

TOWNSHIP(S) A77 < 002 S, 11 E > RANGE(S) A78 < 011 E, 11 E >
 SECTION(S) A79 < 22, 27 > 26 15
 SECTION FRACTION(S) A76 < E 1/2 OF SECTION 22 AND 27 >
 MERIDIAN(S) A81 < GILA AND SALT RIVER >

POSITION FROM NEAREST PROMINENT LOCALITY A82 < 5.1 MILES N-NE OF MINERAL MOUNTAIN (ELV 3351) >
 LOCATION COMMENTS A83 < THE REYMERT MINE IS A GROUP OF SEVEN CONTINUOUS CLAIMS THAT RUN N-S ALONG THE EAST EDGE OF SECTIONS 22 AND 27 >

* ESSENTIAL INFORMATION
 * ESSENTIAL SOMETIMES OR HIGHLY RECOMMENDED

COMMODITIES PRESENT C10 (C, U, MAG, MAU, MPR, MIM, WAD, PSILOME, W, T, ZOLUSITE)
ORE MINERALS C30 (QUARTZ, WAD, PSILOME)
COMMODITY SUBTYPES C41
GEN. ANALYTICAL DATA C43
COM. INFO. COMMENTS C50

SIGNIFICANCE
PRODUCER
MAJOR PRODUCTS (C, U, MAG, MAU, MPR, MIM, WAD, PSILOME, W, T, ZOLUSITE)
MINOR PRODUCTS (C, U, MAG, MAU, MPR, MIM, WAD, PSILOME, W, T, ZOLUSITE)
POTENTIAL PRODUCTS (C, U, MAG, MAU, MPR, MIM, WAD, PSILOME, W, T, ZOLUSITE)
OCCURRENCES (C, U, MAG, MAU, MPR, MIM, WAD, PSILOME, W, T, ZOLUSITE)
NON-PRODUCER
MAIN COMMODITIES PRESENT C11
MINOR COMMODITIES PRESENT C12
OCCURRENCES

*PRODUCTION
PRODUCER
PRODUCTION (YES) (circle) PRODUCTION SIZE SML (MED) LGE (circle one)
NON-PRODUCER
PRODUCTION UND NO (circle one)

STATUS
EXPLORATION OR DEVELOPMENT
PRODUCER
NON-PRODUCER
STATUS AND ACTIVITY A20 (H)
STATUS AND ACTIVITY A20 (L)

DISCOVERER L20 (JOHN REYMERT)
YEAR OF DISCOVERY L10 (1885) NATURE OF DISCOVERY L30 (B) YEAR OF FIRST PRODUCTION L40 (1887) YEAR OF LAST PRODUCTION L45 (1960)
PRESENT/LAST OWNER A12 (REYMERT EXTENSION SILVER MINES INC. (PRESENT))
PRESENT/LAST OPERATOR A13
EXPL./DEV. COMMENTS L110 (7 CONTINUOUS PATENTED CLAIMS AMERICA ALASKA, ASIA, AUSTRALIA, AFRICA, EUROPE, AND GREAT PACIFIC. THE MINE PRODUCED MANGANESE-BEARING SILVER ORE.)

SHEAR ZONE / VEIN DESCRIPTION OF DEPOSIT
DEPOSIT TYPE(S) C40 (MINERALIZED SHEAR-FISSURE ZONE)
DEPOSIT FORM/SHAPE M10 (TABULAR)
DEPTH TO TOP M20 UNITS M21 MAXIMUM LENGTH M40 (6, 000) UNITS M41 (FT)
DEPTH TO BOTTOM M30 UNITS M31 MAXIMUM WIDTH M50 (100) UNITS M51 (FT)
DEPOSIT SIZE M15 (SMALL) M15 (MEDIUM) M15 (LARGE) (circle one) MAXIMUM THICKNESS M60 UNITS M61
STRIKE M70 (N-S) DIP M80 (90 TO 75 EAST)
DIRECTION OF PLUNGE M100 PLUNGE M90
DEP. DESC. COMMENTS M110 (THE ZONE CUTS SCHIST AND IS COMPOSED OF BANDS OF QUARTZ AND BARITE. THE MANGANIFEROUS CALCITES AND SIDERITE ARE CRYSTALLINE AND

DESCRIPTION OF WORKINGS
Workings are: SURFACE M120 UNDERGROUND (M130) BOTH M140 (circle one)
DEPTH BELOW SURFACE M160 (410) UNITS M161 (FT)
LENGTH OF WORKINGS M170 (300) UNITS M171 (FT)
DESC. OF WORK. COM. M220 (TWO MAIN SHAFTS, THE ALASKA SHAFT AND AN OTHER ONE ABOUT 2,000 FEET TO THE SOUTH, LATERAL WORK DONE INCLUDES A FEW TUNNELS)
OVERALL LENGTH M190 UNITS M191
OVERALL WIDTH M200 UNITS M201
OVERALL AREA M210 UNITS M211

GEOLOGY
AGE OF HOST ROCK(S) K1 (PREC.)
HOST ROCK TYPE(S) K1A (SCHIST)
AGE OF IGNEOUS ROCK(S) K2
IGNEOUS ROCK TYPE(S) K2A
AGE OF MINERALIZATION K3 (TERT.)
PERT. MINERALS (NOT ORE) K4 (SIDERITE, CRYSTALLIZED QUARTZ, BARITE, CALCITE)
ORE CONTROL/LOCUS K5 (FISSURE VEIN, NNW TRENDS)
MAJ. REG. TRENDS/STRUCT. N5
TECTONIC SETTING N15
SIGNIFICANT LOCAL STRUCT. N70 (TRANSVERSE FAULTS AND NARROWING AND SWELLING OF THE ZONE)
SIGNIFICANT ALTERATION N75
PROCESS OF CONC./ENRICH. N80
FORMATION AGE N30 (PE)
FORMATION NAME N30A (PINAL SCHIST)
SECOND FM AGE N35
SECOND FM NAME N35A
IGNEOUS UNIT AGE N50
IGNEOUS UNIT NAME N50A
SECOND IG. UNIT AGE N55
SECOND IG. UNIT NAME N55A
GEOLOGY COMMENTS N85 (MINERALIZATION ASSOCIATED WITH TERTIARY INTRUSION + VOLCANISM. 15.8-17.4 MY QUARTZ LATITE EXPOSED 1/2 MILE SOUTH OF MINE WORKINGS)

GENERAL COMMENTS
GENERAL COMMENTS GEN

DO NOT COPY

Information from "Red" Williams, Dept. of Mineral Resources, Field Engineer

William Sloan, chief engineer for Iron King, (Shattuck Denn Corp.) has been examining the Reymert. The Reymert is owned by Norman DeVaux, et al, of Superior.
LAS Memo 1-25-63

7 patented claims owned by Ted Terhaar, 503 N. Brown, Scottsdale, Arizona.
From conversation with Pinal County assessor's office by KAP 7/6/73. Taxes paid through February, 1973.

KAP WR 3/21/80: An unconfirmed report was received that the Reymert Mine, Pinal County, has also been known as DeNoon Mine.

KAP WR 5/30/80: In the company of Richard Beard, visited the Reymert Mine in Pinal County.

KAP WR 8/22/80: Kenneth H. Koenen, Geophysicist, Consultant and Contractor, 412 Kittredge Bldg, Denver, Colorado 80202, phone (303) 825-2298, and Sheridan Woolley, Consulting Engineer, 3603 S.E. Alder, Portland, Oregon 97214, were in the office to discuss their interest in the Reymert Mine, Pinal County. Mr. Koenen reported he is temporarily President of Geo-Resources Inc., P.O. Box 1505 Williston, North Dakota 58801, phone (701) 572-2020. Mr. Koenen and Mr. Woolley explained they are planning to evaluate the mine for possible insitu silver leaching. They were not familiar with the metallurgical problems that have historically plagued the ore. They plan on taking bulk samples to the Idaho Bureau of Mines for testing. They reported that Mr. R.C. Vickers is President of the company (Geo-Reserves) which owns the mine, but is unable to proceed with the project due to health problems.

KAP WR 9/12/80: Robert Peden reported that he has completed laboratory testing of the manganiferous silver ore samples which were sent to him from the Reymert Mine. He went on to say that they feel they could recover 80% of the silver content by their proprietary methodology.

DEPARTMENT OF MINERAL RESOURCES
STATE OF ARIZONA
FIELD ENGINEERS REPORT

Mine Reymert (file)

Date February 10, 1984

District

Engineer Ken A. Phillips

Subject: Pinal County

A visit was made to the Reymert Mine on the above date.

Past Activity

Two inclines have been previously run on the property. The portal of the lower incline is located in footwall country rock, but appears to curve onto the vein in Pinal schist. This lower incline was driven to the south. Portal is 12' x 14', timbered and is in good condition. The schist is fractured and jointed at the portal, some fractures are cemented with vein material. A second incline has been run to the north on the vein. The portal is located about 25' uphill from the first, is also timbered, and measures 9' x 10'. The property has had recent drilling as boxes of core were piled at the portal of the lower incline.

Current Activity

Mine is active. Inspiration Mines Incorporated is the leasee and Nichols Development Co. of Globe is the operator. There are 5 to 7 men working. Two sites are being mined alternatively to produce silica - silver and lime - silver flux for the Inspiration Smelter. The "Blue Vein" currently produces the silica-silver bearing material.

Two sites are being worked alternately to produce two stockpiles, one of a high lime-silver smelter flux material, the second of a high silica-silver flux material. Total combined production for the two stockpiles is at a rate of about 300 tons per day during mining. Once a substantial stockpile is accumulated, a portable crusher will be brought in and 75 tons per day of the lime-silver and 125 tons of the silica-silver will be crushed to minus 5/8" and shipped to the Inspiration Smelter. Fines from the crushing operation might in the near future be screened out and agglomerated also for smelter flux.

Mining is carried out by open trenching along the vein with a D-8 Cat dozer with a ripper. As the vein outcrops on the side of a hill at the mining sites, a high back is benched in about 15 foot benches. The vein (7'-12' wide) is then ripped (drilled and shot when necessary) along the strike and dozed into a pile, loaded and trucked to the stockpiles. Plans are to continue to cut back additional benches and continue surface trenching for an additional 25 feet of depth at the "Blue Vein" site. At that point they will be as close as is safe to the backs of old stopes. Mining will then move to another segment of the vein similarly suited for open trenching.

Some galena is encountered which runs as high as 60 tr.oz/ton in silver. Any significant amount of lead-silver ore is stockpiled for shipment to Asarco's El Paso lead smelter.

The silica-silver flux runs 6-12 Tr. oz Ag/ton and all the ores contain significant amounts of manganese. The deposit is known for its manganiferous silver ores.

Diamond drilling is continuing on the property.

cc: Tucson office ✓
at

check



FEB 21 1984

Office of State Mine Inspector

705 West Wing, Capitol Building
Phoenix, Arizona 85007
602-255-5971

Reymert Mine

NOTICE TO ARIZONA STATE MINE INSPECTOR

In compliance with Arizona Revised Statute Section 27-303*, we are submitting this written notice to the Arizona State Mine Inspector (705 West Wing, Capitol Building, Phoenix, Arizona 85007) of our intent to start stop (please circle one) a mining operation.

COMPANY NAME Nichols Development Corporation
CONTRACTED BY: Inspiration Mines, Inc.

CHIEF OFFICER Monty Nichols, Owner

COMPANY ADDRESS P.O. Box 167 Globe, Az. 85502

COMPANY TELEPHONE NUMBER 425-7006 OR 425-9673

MINE OR PLANT NAME Reymert Mine

MINE OR PLANT LOCATION (including county and nearest town, as well as directions for locating by vehicle)

Turnoff between mile post 221 + 222 approx.
5 miles west of Superior, Az.

TYPE OF OPERATION Mining PRINCIPAL PRODUCT Silica + Lime

STARTING DATE Now CLOSING DATE Unknown

DURATION OF OPERATION Unknown

PERSON SENDING THIS NOTICE Cheisty Nichols

TITLE OF PERSON SENDING THIS NOTICE Co-ordinator

DATE NOTICE SENT TO STATE MINE INSPECTOR 2-16-84

*A.R.S. Section 27-303 NOTIFICATION TO INSPECTOR OF BEGINNING OR SUSPENDING OPERATIONS: When mining operations are commenced in any mine or when operations therein are permanently suspended, the operator shall give written notice to the inspector at his office prior to commencement or suspension of operations.

Reymert Mine file
INSPIRATION MINES, INCORPORATED

P.O. BOX 1559

CLAYPOOL, ARIZONA 85532

Joe

START

December 27, 1983

Mr. James H. McCutchan
705 West Wing Capital Building
Phoenix, Arizona 85007

Dear Mr. McCutchan,

Inspiration Mines, Inc. plans to resume open cut mining activity at the Reymert Mine, west of Superior in Pinal County. Our former MSHA ID Number was 02-01730, but as this number covered the underground work which we at present do not plan to resume, this number may not be current.

We plan to resume activities after the first of the year, and our work will be carried out by Nichols Development Co. of Globe, which performed our previous open cut mining on the property during 1983. Work will entail open cut mining, drilling, blasting, loading, dozing and haulage and present plans call for installation and operation of Nichols' portable crushing and screening plant.

If further information is required, I can be reached at 473-4251 and my current office is in the Inspiration Development building opposite the DPS office in Claypool.

Sincerely,

David S. Cook

David S. Cook
Project Manager

Robert P. Peden
125 Willow Road
Menlo Park, CA 94025
(415) 327-0876

May 29, 1980

Ken A. Phillips
Dept. of Mineral Resources
Mineral Building, Fairgrounds
Phoenix, Arizona 85007

Dear Ken:

It is always nice to hear from you, and I appreciate your locating some manganese-silver ore for us to investigate.

I recommend that you ship the material via UPS. This requires a maximum shipping weight of 50 lbs. Therefore, please retain for your own use any amount which would cause the shipping weight to exceed 50 lbs. As soon as you know what the shipping costs are, please notify me and I will send you a check covering the cost. I look forward to discussing the results of my study with you when complete.

Very truly yours,

Robert P. Peden

Robert P. Peden

RPP/nh

*SAMPLES FROM ARABIAN MINE, MOHAVE CO
and REYMERT MINE, PINAL CO. Sent*

RAP

REYMERT EXTENSION SILVER MINES Inc.

May 14, 1968

Mr. Jackson Diggs
606 So. Windsor Blvd.
Los Angeles 5, Calif.

THE CALIFORNIA DEPARTMENT OF MINERAL RESOURCES
MAKES NO REPRESENTATION AS TO THE ACCURACY
OF THE CONTENTS OF THESE DOCUMENTS.

Dear Sir,

Enclosed find copies of minutes of meetings on the Reymert.

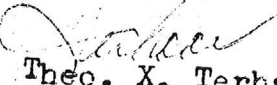
Note that you were elected to the board of directors. We felt that this was right and necessary. You are probably the largest stockholder plus the fact that most of the stockholders are in California and we feel they should have representation on the Board of Directors.

I sincerely hope that this is satisfactory to you, I do realize that it would be expensive for you to attend all board meetings, however I feel that by keeping in close contact with you this would not be necessary until such time as something very important comes up.

You will note that the board is meeting the 25th, at that time I expect that we will have two proposals of some kind but do not know at this time just what they will be.

Thank you.

Sincerely,


Theo. X. Terhaar
Secy.

Notes from Directors' Meeting

May 11, 1968

Officers elected:

Fred Wade	President
P. Coe	Vice President
T. X. Terhaar	Secretary-Treasurer

THE ARIZONA DEPARTMENT OF MINERAL RESOURCES
Does not warrant the accuracy
of the contents of these documents.

Reported that Corporation fees had been brought up through 1966 and postage and printing on Meeting Notice had been paid for by Mr. Wade. 1967 Corporation fees had been paid for by Mr. Terhaar.

New set of By-Laws to be drawn up for approval of the Board of Directors.

Mr. Tountas informs us that a group he represents will be making the Board an offer for operation of the mine within the next two weeks.

Mr. Smith also is working on a contract which he hopes to present to the Board at that time.

Directors will meet again on May 25th at 10 A.M.

4831 N. 117 St

REYMERT EXTENSION SILVER MINE

THE ARIZONA DEPARTMENT OF MINERAL RESOURCES
MAKES NO REPRESENTATION AS TO THE ACCURACY
OF THE CONTENTS OF THESE DOCUMENTS.

Special Stockholders Meeting

Date: May 11, 1968

Time: 1. P. M.

Place: Terhaar Accounting Service - 101 N. Brown, Scottsdale, Arizona

Meeting called to order by Fred Wade, V.P.

Introduction of all parties present.

Mr. Wade explained purpose of the meeting - to reactivate Reymert Extension Silver Mine and to fill vacancies on the Board of Directors.

Present at meeting and number of shares represented including proxies:			
Wade	103,136	Tountas	17,850
Smith	495,900	Coe	50
Anderson (McGinnis)	23,000	Van Marel	50
Terhaar	100	Loulan	50
Cross	200		
		Total Shares	640,336 Quorum

Minutes of Directors' meeting of April 1, 1968 read and approved.

After some discussion it was decided that under the Articles of Incorporation the two remaining Directors would appoint persons to fill Director vacancies until the annual meeting of the Corporation which is the first Monday in October.

Mr. Wade asked for nominations and with this nominated Terhaar, Willoughby and Diggs.

Mr. Tountas nominated Coe, Van Marel and Loulan.

Mr. Wade and Mr. Smith then appointed the following to bring the Board of Directors to seven members:

- Terhaar - Diggs - Willoughby - Coe - Van Marel

Motion was made by Tountas to have the stockholders approve the appointments for the record, seconded by Smith. Vote was called for and was unanimous to ratify the action of the Board.

Wade called for any other business to be brought before the stockholders' meeting.

Mr. Tountas recommended that the Board of Directors draw up a set of By-Laws and that a statutory agent be appointed.

Motion made and seconded to adjourn the meeting - approved.

THEODORE X TERHAAR
Secretary

DIRECTORS MEETING

Date: June 17, 1968
Time: 1:00 P.M.

Place: 101 N. Brown - Scottsdale
Present: Wade - Smith - Terhaar - VanMarel - Coe
Absent: Willoughby - Diggs

THE ARIZONA DEPARTMENT OF MINERAL RESOURCES
WARRANTS REPRESENTATION AS TO THE ACCURACY
OF THE CONTENTS OF THESE DOCUMENTS.

Meeting called to order by President Wade

Clifton Smith gave resume of meeting with Inspiration Copper as follows:

1. \$1,200,000.00 was price asked - \$500,000.00 offered by Inspiration - Ultimate Agreed Price \$1,000,000.00
2. Payment of \$500.00 minimum royalty per month. Still unsettled is 7½% pay value royalty v/s 10% net Smolton Royalty with limitation on credits. Either way will carry \$1.00 minimum per ton.
3. By end of second year they are to diamond drill 5,000 feet or pay \$50,000.00. Same for 3rd. and 4th. year.
4. End of 5th. year, pay option balance of \$1,000,000.00 or renegotiate for new lease and terms.
5. Inspiration to do all assessment work and pay taxes on mine.

President Wade then reported Inspiration sent crew to mine to check claims and did the assessment work up to date in the amount of \$1,400.00 and Wade filed the assessment claim this morning.

The \$1,400.00 assessment work will be charged back to us by Inspiration.

Inspiration to pay us advance royalty of \$3,000.00 and royalty payments to start in 6 months. Assessment work will be deducted from the \$3,000.00 after we figure what we need for operating expenses for 6 months. Balance of assessment work will be deducted from monthly royalties spread over a period of time.

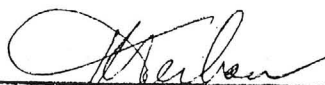
Inspiration wants us to settle with Mr. Scel because they will not gamble on closing deal unless they are certain there will be no litigation from other sources.

Hugh Albrecht
Mr. McDonald
602
4732411

Wade reported on discussion with Mr. Seel

Motion by Mr. Van Marel seconded by Coe that Wade, Smith and Terhaar be appointed to deal with Mr. Seel and be given full authority to arrive at and make settlement with Mr. Seel according to their best judgment.
Motion carried.

Motion to Adjourn - carried.



Theo. X. Terhaar - Sec'y.

THE ARIZONA DEPARTMENT OF MINERAL RESOURCES
MAKES NO REPRESENTATION AS TO THE ACCURACY
OF THE CONTENTS OF THESE DOCUMENTS.

REYMERT MINE

No Not Reproduce

PINAL COUNTY
MINERAL HILL DIST.

Conference with August Kaempf, Superior 10/21/64

August Kaempf, who has been representing Norman DeVaux (who owned 53% of the stock), said that DeVaux died early in September. He also stated that a conference with Mr. Walker, geologist for Phelps Dodge revealed that the test hole at the Reymert was now down 2200 feet and that the hole so far had apparently not shown much. During the late summer the project had been down for several weeks after reaching 1850 feet, because of a lost string of tools or bit. The hole was finally wedged past the tools. It is planned to change the hole inclination somewhat by further wedging, according to Kaempf. Sprague-Henwood Drilling Co., Salt Lake City, is still on the job. The core is now about 3/4-inch.

MEMO LAS 10/21/64

DEPARTMENT OF MINERAL RESOURCES

STATE OF ARIZONA

FIELD ENGINEERS REPORT

Mine Reymert Mine

Date March 25, 1964

District Mineral Hill District, Pinal Co.

Engineer Lewis A. Smith

Subject: Conference with August Kaempf at Superior.

Mr. Kaempf reported that Sprague-Henwood Drilling Company, Salt Lake City, Utah, are diamond drilling a test hole for Phelps Dodge Corp. under an option agreement with Norman DeVaux, owner. Mr. Kaempf is temporarily representing Mr. DeVaux, who is now in Florida. "Pete" Walker is the Phelps Dodge geologist in charge and Elmer Winters is the drill boss. The hole, according to Kaempf, will possibly be sunk as much as 3000 feet, and is on about a 56 degree incline. The core is approximately 3 inches in diameter. The hole was temporarily halted at 200 feet, because of bit trouble, but it is calculated to resume by Friday. At 200 feet the hole encountered a highly brecciated white quartz zone that has proven to be very difficult to drill. Walker, according to Kaempf, said that they were exploring for copper. No one was on the ground so no visit was made.

The earlier ore shipments were composed of manganiferous silver ore that was sent to Magma and Hayden smelters for flux. During the 1940's James Todd, Phoenix, lessee, shipped several thousand tons of siliceous silver ore to International Smelter, Miami, as flux. This latter ore averaged about 10 oz. silver. More recent sampling in mid-1962, showed about this grade and the sampling parties did not consider this sufficient and withdrew. Mr. DeVaux thinks that there is a chance for deep copper mineralization.

DEPARTMENT OF MINERAL RESOURCES

STATE OF ARIZONA

FIELD ENGINEERS REPORT

Mine Reymert Mine

Date June 25, 1962

District Mineral Hill District - Pinal County

Engineer Lewis A. Smith

Subject: Interview with August Kaempf, of Superior

Mr. Kaempf said that Andy Sinbad, of Apache Junction, and a man by the name of Carrey, of Cincinnati, Ohio did some work in February, but came up with no more than 12 ounces silver. This was not considered satisfactory so that the proposition fell through. The silica was less than 52 percent.

TODD, JAS. (LESSEE)

SMITH, W. C. , Mgr.
HOLEMAN, C. L., Supt.

MINE - REYMERT MINE - 13 $\frac{1}{2}$ miles west of Superior.

NAME OF MINE: REYMERT

COUNTY: PINAL E

DISTRICT: _____

METALS: AG

OPERATOR AND ADDRESS:

MINE STATUS

<u>DATE:</u>	<u>OPERATOR AND ADDRESS:</u>	<u>DATE:</u>	<u>MINE STATUS</u>
5/1/44	Walter Smith, Coolidge	5/1/44	Shipping
11/44	W. J. Folback, Superior	11/44	Operations Planned
2/45	Norman DeVaux & Bennett, Globe	2/45	Repairing road
		3/15/45	Reconditioning main workings.
		5/46	Idle
		11/46	Shipping
3/47	Frank Carrow, Globe	3/47	Shipping

DEPARTMENT OF MINERAL RESOURCES

News Items

Date 5/22

Mine REYMURT
 Location 8 MI. S OF SUPERIOR
 Owner W.J. FORBACH
 Address SUPERIOR
 LEASING FROM
 Operating Co. REYMURT MINING Co.
 Address
 Pres. RUMORED THAT MIAMI
 Genl. Mgr. COPPER Co. HAS OPTIONED
 Mine Supt. BUT BUT DOUBTFUL IF
 Mill Supt. THEY EXERCISE IT.
 Principal Metals Ag
 Men Employed 50
 Production Rate SHIPPING 400 TONS A WEEK
 Mill, Type & Capacity 1/2 TO MAGMA
 1/2 TO INTERNATIONAL
 Power, Amt. & Type

Signed

J.C.

(Over)

Simon, M.C.C.

DEPARTMENT OF MINERAL RESOURCES

News Items

Date 5/7/46

Mine Reymurt
 Location six miles S of Superior
 Owner
 Address
 Operating Co.
 Address
 Pres.
 Genl. Mgr. Frank Corrow
 Mine Supt.
 Mill Supt.
 Principal Metals Ag 12-15g
 Men Employed closed 2 weeks ago
 Production Rate because of price of Ag
 Mill, Type & Capacity
 Power, Amt. & Type

Signed

(Over)

DEPARTMENT OF MINERAL RESOURCES
STATE OF ARIZONA
FIELD ENGINEERS REPORT

Mine REYMERT MINE

Date June 11th, 1942

District

Engineer FRED H. PERKINS

Subject:

Reymert Lease

Jas. Todd, Lessee, 66 N. County Club Drive, Phoenix.
W. C. Smith, Manager, Coolidge, Arizona.
C. L. Holeman, Supt., P. O. Box 783, Superior, Arizona.

P. O. Box 783, Superior, Arizona

Reymert Mine

Located $13\frac{1}{2}$ miles West of Superior

1941 Production Silver only. From June 1, 1941 to January 1, 1942 produced 6855 tons.

Average value 10 oz. silver

Average of 33 men employed

1942 Production for January, February, and March 1675 tons and approximately 2500 April and May, to June 10, approximately 2500 tons.

Average men employed for above period-20.

Average value of ore 20 ozs.

Average width of vein 4 feet.

They have a contract with Smelter at Miami for 1000 tons per month but because of the silica content in the ore will take all they can get out. Silica runs about 65%.

This mine is mined through a 300 ft. incline shaft, about 80 degrees. There is 1025 ft. of drift.



M111116-111116
1-15-42 P.17

Edwin A. Stone 6-8-38

Reymert Mine-copy of Summary with Report

The Reymert property is located near Superior, Arizona. It comprises 7 patented mining claims laid out with parallel endlines on the outcrop of the Continental or Reymert ledge.

The chain of ownership is unbroken and titles should be clear.

Topography and transportation introduce no problems, but water requirements above that pumped from the mine involves establishment of pipe lines and pumping plants. The Alaska is said to make 50 gallons per minute.

The Reymert property has produced about 80,000 tons of ore to date, having an aggregate value of approximately \$866,905.

The ore contains about 20% lime and 42% silica. Metallurgically, it is refractory; it requires roasting and cyanidation for recovery of the silver values.

The vein is a very prominent fissure vein composed of the minerals calcite, quartz, barite, Mn oxides, Fe oxides, and small amounts of fluorite and some unknown silver mineral. The vein strikes across the schist country-rock nearly at right angles to the schistosity. Where the vein crosses diorite intrusive or encounters diorite in depth, it tends to narrow, split up, and apparently becomes low grade. Faulting has resulted in a strike/slip of about 280 feet to the left along the vein. Cross-faults are of little importance, and offsets on them are to the right.

The mineralization occurred in three main periods. First, fissure filling with black calcite, second reopening and fissure filling with quartz, third reopening and fissure filling with quartz and barite and the introduction of the main silver values. The nature and texture of the vein filling indicate it to be of epithermal type.

Information is not available as to whether enrichment took place or not. The values become low with depth wherever information is available.

Preliminary sampling over the main part of the vein indicates the following ore reserves:

29,817 tons of probable ore of 11.1 oz Ag grade
 71,786 tons of possible ore of 11.91 oz Ag grade
 92,918 tons of possible ore of 8.15 oz Ag grade;
 the latter being less adequately sampled than previously indicated possible ore.

If the property is considered attractive enough for further work, it is recommended that the indicated ore blocks be thoroughly sampled.

RESERVE MINE. W. C. Smith, Lessee, Coolidge, Arizona.

This property is located about 10 miles from Superior. The principal value is silver but the production is important for the 65% SiO_2 content. The vein is about 4 feet wide and the composition persistent.

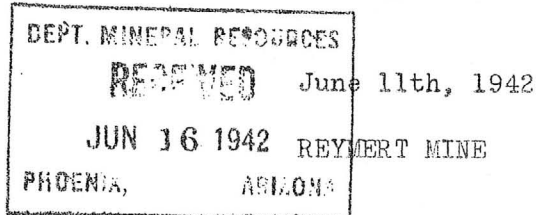
A production rate of 1200 tons per month was maintained for the first half of 1942. The entire production was shipped to the Miami smelter with whom a 1000 ton permonth contract was executed.

Like the Hardy and Ash Peak mines the ore is not a copper bearing ore, but is nevertheless of utmost importance in copper production.

from COPPER REPORT NO. 2, DECEMBER 23, 1942, by Earl F. Hastings, for
COPPER BRANCH, WAR PRODUCTION BOARD.

SURVEY OF OPERATING MINE

By: Fred H. Perkins



Reymert Lease

Jas. Todd, Lessee, 66 N. Country Club Drive, *Phoenix*
W. C. Smith, Manager, Coolidge, Arizona
C. L. Holeman, Supt. P. O. Box 783, Superior, Arizona

P. O. Box 783, Superior, Arizona

Reymert Mine

Located $13\frac{3}{4}$ miles West of Superior

1941 Production Silver only. From June 1, 1941 to January 1, 1942 produced 6855 tons.

Average value 10 oz. silver

Average of 33 men employed

1942 Production for January, February, and March 1675 tons and approximately 2500 April and May, to June 10, approximately 2500 tons.

Average men employed for above period 20.

Average value of ore 20 ozs.

Average width of vein 4 feet.

They have a contract with Smelter at Miami for 1000 tons per month but because of the silica content in the ore will take all they can get out. Silica runs about 65%.

This mine is mined through a 300 ft. incline shaft, about 80 degrees. There is 1025 ft. of drift.

TAKEN FROM THE REPORT OF THE GOVERNOR OF ARIZONA 1893 pp 28-29

Manganese ores occur abundantly. Such material will some day play an important part in the reduction of certain classes of silver ores which abound in Arizona. Notable instances of their occurrence in the mines of silver ores are the Lucky Cuss, of Tombstone, and the Reymert, northwest of Florence, and other contain manganese in workable quantities.

Partial

304xxx

March 14, 1944

File No. BDD

War Price and Rationing Board
No. 81.7.1
137 North Second Avenue
Phoenix, Arizona

Gentlemen:

Mrs. Rae Tod of the Reymert Lease is shipping fluxing ore to Miami smelter from this serialized mine. Mrs. Tod is supervising this operation during Major Tod's absence as C.O. of the Gunnery Field at Ajo. It is essential that she make two round trips per month to properly conduct this work.

This department recommends issuance of necessary gas ration to carry on war essential work.

Yours very truly,

George A. Ballam
Assistant to the Director

GAB:LP

DEPARTMENT OF MINERAL RESOURCES

REPORT TO OPA ON ACTIVE MINING PROJECT

Date..... February 20, 1945.....

Name of Mine..... Reymart.....

Owner or Operator..... Reymart Lease, a Co-partnership
Norman DeVaux, Dominion Hotel, Globe;
Address..... or Box 21, Superior.....

Mine Location..... About 10 miles south of Superior, Arizona.....

Filing Information

File System.....

File No.....

This chart to be used for gallons of gasoline required per month.

PRESENT OPERATIONS: (check X)

Production..........; Development..........; Financing.....; Sale of mine.....;

Experimental (sampling)..........; Owner's occasional trip..........;

Other (specify).....

PRODUCTION: Past and Future.

Tons

Approx. tons last 3 months Idle.....

Approx. present rate per 3 months 1,000.....

Anticipated rate next 3 months 1,500.....

If in distant future check (X) here

EQUIPMENT OPERATED:

Type	Quantity or Horse Power	Miles or Hours Per Month	Gallons Required Per Month
Personal Cars
2 Light or Service Trucks	<u>150</u>	<u>1,000 mi.</u>	<u>60</u>
Ore Hauling Trucks
Compressors	<u>100</u>	<u>200 hrs.</u>	<u>700</u>
Caterpillar bulldozer	<u>65</u>	<u>100 "</u>	<u>200</u>
Other Mine or Mill Eqpt.
Hoist & pump	<u>150</u>	<u>225 "</u>	<u>550</u>
PRODUCT PRODUCED OR CONTEMPLATED: Name metals or minerals.			<u>1,510</u>

Flux for copper smelting. Mn. & Ag

REMARKS:

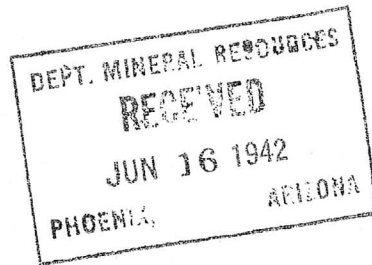
Recommend 1500 gallons per month. An established going concern.

ARIZONA DEPARTMENT OF MINERAL RESOURCES

By.....
Field Engineer

SURVEY ON OPERATING MINE

By: Fred H. Perkins



June 11, 1942

TODD LEASE on REYMENT MINE

Problems:

If they have any problems Mr. Holeman would not acknowledge it.

Priorities O.K. Granted a 0 quota.

No labor troubles or scarcity of labor.

No mining problem, so they claim, though I noticed they had 2 compressors; one Diesel and one gasoline driven.

GEOLOGY: The deposit lies in a composite-shear-fissure zone cutting Precambrian Pinal schists that include thin bedded sericitis-quartz wider bedded quartz-mica schists and limited amphibolitic varieties. The schist bedding locally has N-S strike with local variations toward the NE. They dip steeply or are about vertical. (East of the mineralized zone the schists are intimately sheeted (1 inch to 5 inches between the sheets) This sheeting trends east to the Northeast and is clear cut, could be confused with schistosity in places). The mineralized zone ranges from 20 to 100 feet in width and trends about N 10-20 degrees west and dips from 75 deg E to vertical. The main production was obtained from comparatively narrow oblong shoots ranging from 3-20 feet in width and from a few tens of feet to several hundred feet in length. The ore was mined through the 410-foot Alaska shaft (North) and the 400-foot (South) shaft. These are approximately 2000 feet apart. The mineralized zone has been estimated to be 5400 feet long. On the north end, as far as could be observed, the zone terminates in a sharp and straight gully that probably follows a fault. On the south end the zone narrows and the ore tends to horsetail. The ore shoots lie in portions of the mineralized zone that lie along the two walls and are separated by comparatively low-grade mineralization or barren but mineralized schist. Ore has been reported to be present down to the 400-foot shaft at the Alaska. Several thousand feet of exploratory lateral work was done including a few tunnels, the longest open one (over 300 feet) extending south from the collar of the "South" shaft. Several workings and an open cut lie between the two shafts. The ore shoots appear to have been controlled by transverse faults and narrowing and swelling of the mineralized zone. Near the Alaska shaft a nearly vertical fault and a flat dipping fault cross the mineralized zone. The flat fault dips NW and N border of the stopes, north of the shaft appear to follow it downward. The nearly vertical fault is, also, mineralized and the stopes south of the shaft taper off to the south from it. The projected faults could have intersected, but such a contact is now removed by erosion. At the "South" shaft the vein width of the zone is 4-12 feet, 1000 feet south of the "South" shaft the zone narrowed and appears to "horsetail" somewhat, with wider barren zones in between. Where observed the mineralized zone is composed of bands of barite, manganiferous calcite, dense white quartz, siderite, wad, psilomelane (very local) sparse pyrolusite, spongy, crustified quartz and iron oxides. The close banding may be controlled by shearing but this was relatively open permitting crystal development. The barite bands range up to 6 inches wide and are composed of platy crystals. Quartz in some bands is dense, reddish and very fine grained but in others is spongy, crustified in combs, or in loose aggregates. The manganiferous calcites and siderite are crystalline and in places widen into lenses. The silver is said to be most prevalent in the ferruginous and manganiferous quartz or calcite. The silver is reportedly present as cerargyrite and argentite. No other appreciable metallic minerals are reported. The U.S. Bureau of Mines RI 4097 p 7 (1947) reports fluorite, also. They also report that dikes of basic rocks and rhyolite have intruded the schists in the area. The width of the mineral bands varies considerably from place to place.

The U. S. Bureau of Mines RI 4097 (1947) p11 shows an analysis of the ore (15 ton sample): Mn-4.75%; Cu-0.05%; Pb-0.80%; Zn-0.70%; Fe-4.95%; BaO-8.2%; CaO-8.7%; Insol-60.8% (SiO₂-51.3%); S-1.25%; P-0.70%; MgO-0.3%; with 0.005 oz Au and 16.35 Ag per ton. The lead and zinc is probably oxidized and not recognizable.

Metallurgical results are shown in RI 4097.

References:- U. S. Bureau of Mines RI 4097 (1947) pp 3,5,7,10 and 13.

" " " " " /C 7990 (1961) pp 143, 144.

Fred H. Perkins, Arizona Department of Mineral Resources June 11, 1942.

DEPARTMENT OF MINERAL RESOURCES
STATE OF ARIZONA
MINE OWNER'S REPORT

Date 11/8/39

1. Mine Aurora Mine - 25, 11E
2. Location Pinal County
3. Mining District & County Mineral Hill
4. Former name
5. Owner Aurora Mining Co.
6. Address (Owner) None
7. Operator (see John Korats)
8. Address (Operator) 316½ E. Polk St.
Phoenix, Ariz.
9. President, Owing Co.
- 9A. President, Operating Co.
10. Gen. Mgr.
14. Principal Minerals Gold
11. Mine Supt.
15. Production Rate
12. Mill Supt.
16. Mill: Type & Cap.
13. Men Employed
17. Power: Amt. & Type
18. Operations: Present Assessment work done. Finished Oct. 4, 1939.
19. Operations: Planned Plan to start shipping when certain problems settled.
20. Number Claims, Title, etc. 5 claims - other claims located by Company dropped.
21. Description: Topography & Geography Low rolling Country.
22. Mine Workings: Amt. & Condition 50 ft. crosscut tunnel then drifts 100 ft. and 75 ft.
(with 100 ft. winze on 100 ft. drift) Other tunnel 80 ft. on
stringer. Other shallow workings on ore.

23. Geology & Mineralization Quartz vein in schist near Reymert mine.

24. Ore: Positive & Probable, Ore Dumps, Tailings Have shipped 4 cars of ore, made money
won 1st. two cars--even on 3rd and lost money on 4th, due to poor
sorting.

24A. Dimensions and Value of Ore body

25. Mine, Mill Equipment & Flow-Sheet None

26. Road Conditions, Route Good road-- $\frac{1}{4}$ miles before reaching Reymert mine--out from Superior

27. Water Supply Good--by wells in canyon

28. Brief History

29. Special Problems, Reports Filed Company failed to do assessment work. 4 of stockholders did do it.
Question of next step to protect their rights referred to attorney.
Company has not paid corporation taxes.

30. Remarks

31. If property for sale: Price, terms and address to negotiate.

32. Signature.....(Signed).....John Kovats.....

33. Use additional sheets if necessary.

DEPARTMENT OF MINERAL RESOURCES
STATE OF ARIZONA
MINE OWNER'S REPORT

Date 11/8/39

1. Mine Aurora Mine - 25, 11E
2. Location Pinal County
3. Mining District & County Mineral Hill
4. Former name
5. Owner Aurora Mining Co.
6. Address (Owner) None
7. Operator (see John Korats)
8. Address (Operator) 316½ E. Polk St.
Phoenix, Ariz.
9. President, Owing Co.
- 9A. President, Operating Co.
10. Gen. Mgr.
14. Principal Minerals Gold
11. Mine Supt.
15. Production Rate
12. Mill Supt.
16. Mill: Type & Cap.
13. Men Employed
17. Power: Amt. & Type
18. Operations: Present Assessment work done. Finished Oct. 4, 1939.
19. Operations: Planned Plan to start shipping when certain problems settled.
20. Number Claims, Title, etc. 5 claims - other claims located by Company dropped.
21. Description: Topography & Geography Low rolling Country.
22. Mine Workings: Amt. & Condition 50 ft. crosscut tunnel then drifts 100 ft. and 75 ft.
(with 100 ft. winze on 100 ft. drift) Other tunnel 80 ft. on
stringer. Other shallow workings on ore.

23. Geology & Mineralization Quartz vein in schist near Reymert mine.

24. Ore: Positive & Probable, Ore Dumps, Tailings Have shipped 4 cars of ore, made money on 1st. two cars--even on 3rd and lost money on 4th, due to poor sorting.

24A. Dimensions and Value of Ore body

25. Mine, Mill Equipment & Flow-Sheet None

26. Road Conditions, Route Good road--1 1/4 miles before reaching Reymert mine--out from Superior

27. Water Supply Good--by wells in canyon

28. Brief History

29. Special Problems, Reports Filed Company failed to do assessment work. 4 of stockholders did do it. Question of next step to protect their rights referred to attorney. Company has not paid corporation taxes.

30. Remarks

31. If property for sale: Price, terms and address to negotiate.

32. Signature.....(Signed).....John Kovats.....

REYMERT MINE

DO NOT COPY

PINAL COUNTY

Information from "Red" Williams, Dept. of Mineral Resources, Field Engineer

William Sloan, chief engineer for Iron King, (Shattuck Denn Corp.) has been examining the Reymert. The Reymert is owned by Norman DeVaux, et al, of Superior.
LAS Memo 1-25-63

7 patented claims owned by Ted Terhaar, 503 N. Brown, Scottsdale, Arizona. From conversation with Pinal County assessor's office by KAP 7/6/73. Taxes paid through February, 1973.

KAP WR 3/21/80: An unconfirmed report was received that the Reymert Mine, Pinal County, has also been known as DeNoon Mine.

KAP WR 5/30/80: In the company of Richard Beard, vited the Remert Mine in Pinal County.

KAP WR 8/22/80: Kenneth H. Koenen, Geophysicist, Consultant and Contractor, 412 Kittredge Bldg, Denver, Colorado 80202, phone (303) 825-2298, and Sheridan Woolley, Consulting Engineer, 3603 S.E. Alder, Portland, Oregon 97214, were in the office to discuss their interest in the Reymert Mine, Pinal County. Mr. Koenen reported he is temporarily President of Geo-Resources Inc., P.O. Box 1505 Williston, North Dakota 58801, phone (701) 572-2020. Mr. Koenen and Mr. Woolley explained they are planning to evaluate the mine for possible insitu silver leaching. They were not familiar with the metallurgical problems that have historically plagued the ore. They plan on taking bulk samples to the Idaho Bureau of Mines for testing. They reported that Mr. R.C. Vickers is President of the company (Geo-Reserves) which owns the mine, but is unable to proceed with the project due to health problems.

KAP WR 9/12/80: Robert Peden reported that he has completed laboratory testing of the manganiferous silver ore samples which were sent to him from the Reymert Mine. He went on to say that they feel they could recover 80% of the silver content by their proprietary methodology.

REYMERT

PINAL COUNTY

NJN WR 2/20/87: Janice Coggin (c) reports that Inspiration Consolidated Mines (file) now owns the Reymert (file) Pinal County. The property is producing 6 oz ton Ag material for the Inspiration smelter. Inspiration has done drilling for additional reserves although Mrs. Coggin was unaware of their exact reserve figures.

NJN WR 4/17/87: Contacted Nichols Development Corporation (card) of Globe. They report they are mining 1000 tons per week at the Reyment Mine (file) Pinal County. The material is just crushed, no other processing, before being sent to the Inspiration smelter as flux. The Department engineers were invited to visit the property.

REYMERT MINE

PINAL COUNTY

KAP WR 2/10/84: In the company of Jack Pursley a visit was made to the Reymert Mine. The mine is currently active. A separate report has been written.

KAP WR 9/14/84: John Robertson, Phelps Dodge Corporation, New Cornelia Mine, Ajo, Arizona reported that Phelps Dodge had an option on, and drilled the Reymert Mine (f) Pinal County in 1962.

NJN WR 9/14/84: It was reported that K and D Engineering has a pilot mill project at the Reymert Mine (f) Pinal County to provide an upgraded flux product for Inspiration's smelter.

(low grade Mn stockpile - not slag)

KAP WR 5/17/85: Jesse Patten and Mr. Tanner visited the office to learn about leaching gold. They report that the "slag" at the Reymert Millsite, Pinal Co. runs 0.35 oz/ton gold and 4 or 5 oz/ton silver and is very porous and breaks easily. They had a leach test run by someone whose name they have forgotten and now want to build a pilot heap pad for about 5 to 10 tons to see if they can extract the gold. I suggested that the first thing they should do is cut some representative samples and have them assayed by a registered assayer. They displayed a lack of confidence in registered assayers which I tried to dispell. That aside, I explained the cyanide leaching process and its variations to them as best I could and pointed out the most pertinent sections of our "Cyanide Book" for them to read and/or make copies.

MG WR 7/26/85: The Canadian Mines Handbook, 1985-86, reports Plexus Resources Corp., 780, 175 SW Temple St., Salt Lake City, Utah 84101, has a royalty interest in the Reymert mine (Pinal Co) company to receive royalty payments up to \$620,000 to be paid \$500/mo until Aug 1, 1984, then \$2,500/mo or 3.5% net smelter return. Reserves suitable for open pit: 936,000 tons averaging 4.48 oz Ag/ton.

REYMERT MINE

PINAL COUNTY

MG WR 9/24/82: Mr. Dick Wilber of the Tucson Citizen reports that the Reymert mine in Pinal County, owned by Plexus Resources of Salt Lake City, Utah, has been optioned to Inspiration Consolidated Copper Company.

RRB WR 12/3/82: It was reported that the Inspiration Development Company is trying to develop the Reymert Mine, Pinal County for flux for the Inspiration smelter and ASARCO's smelter at Hayden.

MG WR 12/31/82: It is reported that the Inspiration Mines Co. (Subsidiary of Inspiration Consolidated Copper Co.) began mining in about June 1982, silver-bearing siliceous flux ore from the Reymert Mine, Pinal County.

MG WR 2/11/83: Visited the Reymert Mine, Pinal County. Inspiration drove two 10 x 12-ft. declines on the property during 1982. These declines, the upper and the lower, are in the SE $\frac{1}{4}$ NE $\frac{1}{4}$, Sec. 22, T2S R11E. Production of siliceous flux was chiefly from the Blue Vein, a subsidiary structure to the Main Vein. The Blue Vein assayed 4-10 oz. Ag/ton. The vein also assays up to about one percent fluorine, occurring as fluorite. Since fluorine is harmful to the Inspiration smelting process and is also deleterious to the production of sulfuric acid, Inspiration ceased mining at the Reymert. According to Mr. David Chapman, the project manager, some long-hole drilling may be done in February or March 1983.

NJN WR 2/4/83: Don Guest reported that Geology Resources owned by Todd H Spargo, produced 100,000 oz. of silver during 1976-77 at the Reymert Mine, Pinal County.

NJN WR 12/9/83: David S. Cook, Inspiration Mines, Box 1559, Claypool, AZ 85532, visited and reported Inspiration is drilling for reserves at the Reymert Mine. Triple N. Enterprises (Monty Nichols) has mined over 10,000 tons of flux there in the last 1 $\frac{1}{2}$ years.

MARK

4015 N 15TH AV.

MARK V. INC. BUSINESS CONSULTANTS - 6125 EAST INDIAN SCHOOL RD. · P. O. BOX 143 · SCOTTSDALE, ARIZONA 85252 · (602) 945-5579

BUSINESS CONSULTANTS

Hugh Olnstead
602-425-6359
at globe.
12 AUGUST 1969

602 9473

TO - BOARD OF DIRECTORS - REYMAR~~T~~ SILVER MINES
FROM - THEO. X. TERHAAR, SECRETARY

THE ARIZONA DEPARTMENT OF MINERAL RESOURCES
MAINTAINS RESPONSIBILITY TO THE ACCURACY
OF THE CONTENTS OF THESE DOCUMENTS.

A MEETING OF THE BOARD OF DIRECTORS OF THE
REYMAR SILVER MINES HAS BEEN CALLED FOR
SATURDAY, AUGUST 23, 1969 AT 10 A.M. IN THE
MORNING, IN THE OFFICE OF THE SECRETARY -
6125 EAST INDIAN SCHOOL ROAD, SCOTTSDALE,
ARIZONA - SUITE 1008.

*Reymart
& Extension
Silver
mine*

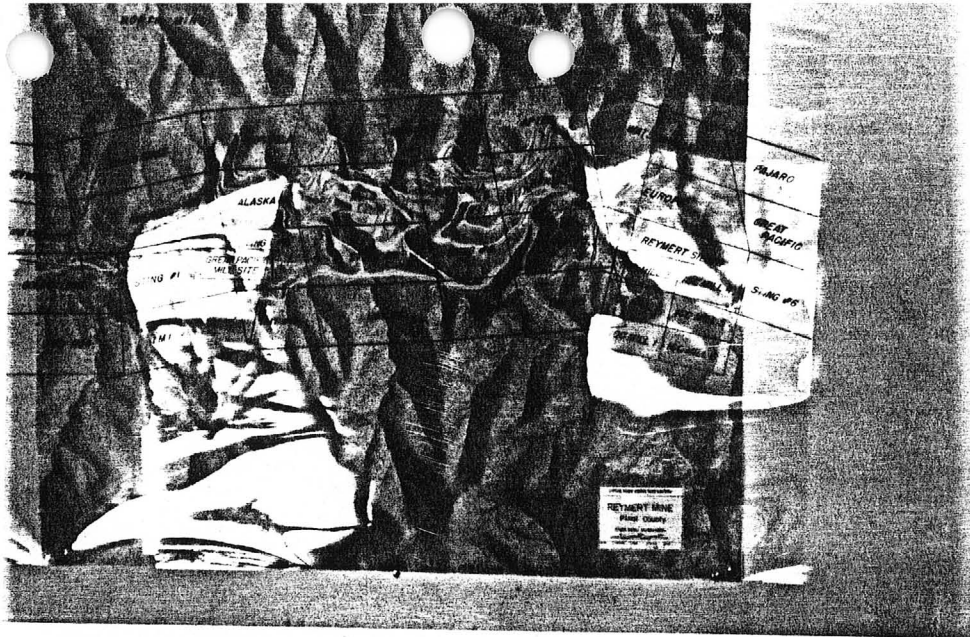
*Geo
Holland Hill
Phoenix*

AUTHORIZED MORTGAGE BROKER FOR
The Prudential Insurance Company of America

JACKSON DIGGS
REALTOR

WE 5-3978
606 SO. WINDSOR BLVD.
LOS ANGELES, CALIF. 90005

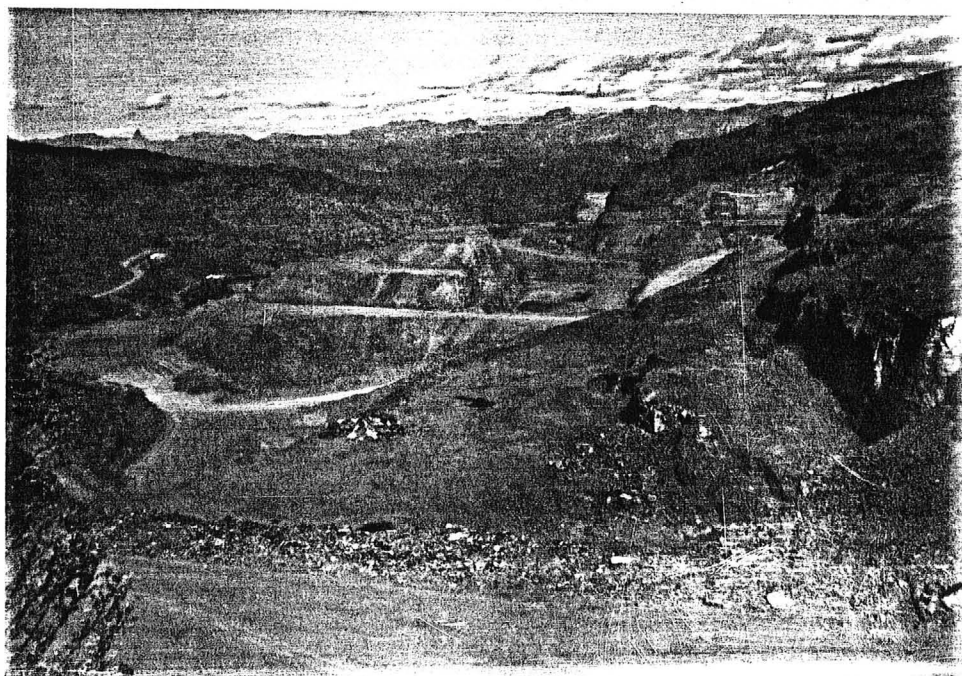
Reymert Mine
Photo in office
2/2/89



Reymert Mine
Looking southeast
2/2/89



Reymert Mine
Looking north
2/2/89



(Originals in photo file)

COMMODITIES PRESENT C10 <CU, MAG, MAU, MPR, MM, WAD, PSILOME, NE, TROLUSITE>
 ORE MINERALS C30 <SILVER, QUARTZ, MAGNETITE, WAD, PSILOME, NE, TROLUSITE>
 COMMODITY SUBTYPES C41 <>
 GEN. ANALYTICAL DATA C43 <>
 COM. INFO. COMMENTS C50 <>

SIGNIFICANCE

MAJOR PRODUCTS	PRODUCER	NON-PRODUCER
MINOR PRODUCTS	MAJOR <AG, B, C, D, E, F, G, H, I, J, K, L, M, N, O, P, Q, R, S, T, U, V, W, X, Y, Z>	MAIN COMMODITIES PRESENT C11 <>
POTENTIAL PRODUCTS	MINOR <C, D, E, F, G, H, I, J, K, L, M, N, O, P, Q, R, S, T, U, V, W, X, Y, Z>	MINOR COMMODITIES PRESENT C12 <>
OCCURRENCES	POTEN <P, B, M, N, O, P, Q, R, S, T, U, V, W, X, Y, Z>	OCCUR <>

*PRODUCTION

PRODUCTION	PRODUCER	NON-PRODUCER
YES (circle)	PRODUCTION SIZE SML (MED) LGE (circle one)	PRODUCTION UND NO (circle one)

EXPLORATION OR DEVELOPMENT

STATUS	PRODUCER	NON-PRODUCER
	STATUS AND ACTIVITY A20 <H>	STATUS AND ACTIVITY A20 <L>

DISCOVERER L20 <JOHN REYMERT>
 YEAR OF DISCOVERY L10 <1985> NATURE OF DISCOVERY L30 YEAR OF FIRST PRODUCTION L40 <1987> YEAR OF LAST PRODUCTION L45 <1960>
 PRESENT/LAST OWNER A12 <REYMERT EXTENSION SILVER MINES INC. (PRESENT)>
 PRESENT/LAST OPERATOR A13 <>
 EXPL./DEV. COMMENTS L110 <7 CONTINUOUS PATENTED CLAIMS AMERICA, ALASKA, ASIA, AUSTRALIA, AFRICA, EUROPE AND GREAT PACIFIC. THE MINE PRODUCED MANGANESE-BEARING SILVER ORE.>

DESCRIPTION OF DEPOSIT

DEPOSIT TYPE(S) C40	<SHEAR ZONE / VEIN MINERALIZED SHEAR-FISSURE ZONE>		
DEPOSIT FORM/SHAPE M10	<TABULAR>		
DEPTH TO TOP M20	UNITS M21 <>	MAXIMUM LENGTH M40 <6,000>	UNITS M41 <FT>
DEPTH TO BOTTOM M30	UNITS M31 <>	MAXIMUM WIDTH M50 <100>	UNITS M51 <FT>
DEPOSIT SIZE M15	SMALL (M15) MEDIUM (M15) LARGE (M15) (circle one)	MAXIMUM THICKNESS M60 <>	UNITS M61 <>
STRIKE M70	<N-S>	DIP M80 <90 TO 75 EAST>	UNITS M61 <>
DIRECTION OF PLUNGE M100	<>	PLUNGE M90 <>	UNITS M61 <>
DEP. DESC. COMMENTS M110	<THE ZONE CUTS SCHIST AND IS COMPOSED OF BANDS OF QUARTZ AND BARITE. THE MANGANESE-FERROUS CALCITES AND SIDERITE ARE CRYSTALLINE AND>		

DESCRIPTION OF WORKINGS

Workings are: SURFACE M120 UNDERGROUND (M130) BOTH M140 (circle one)	OVERALL LENGTH M190 <>	UNITS M191 <>
DEPTH BELOW SURFACE M160 <410>	OVERALL WIDTH M200 <>	UNITS M201 <>
LENGTH OF WORKINGS M170 <300>	OVERALL AREA M210 <>	UNITS M211 <>
DESC. OF WORK. COM. M220	<TWO MAIN SHAFTS, THE ALASKA SHAFT AND AN OTHER ONE ABOUT 2,000 FEET TO THE SOUTH. LATERAL WORK DONE INCLUDES A FEW TUNNELS.>	

GEOLOGY

*AGE OF HOST ROCK(S) K1 <PREL. >
 *HOST ROCK TYPE(S) K1A <SCHIST >
 *AGE OF IGNEOUS ROCK(S) K2 <>
 *IGNEOUS ROCK TYPE(S) K2A <>
 *AGE OF MINERALIZATION K3 <TERT. >
 *PERT. MINERALS (NOT ORE) K4 <SIDERITE, CRUSTIFIED QUARTZ, BARITE, CALCITE >
 *ORE CONTROL/LOCUS K5 <FISSURE VEIN, NNW TRENDING >
 *MAJ. REG. TRENDS/STRUCT. N5 <>
 *TECTONIC SETTING N15 <>
 *SIGNIFICANT LOCAL STRUCT. N70 <TRANSVERSE FAULTS AND NARROWING AND SWELLING OF THE ZONE >
 *SIGNIFICANT ALTERATION N75 <>
 *PROCESS OF CONC./ENRICH. N80 <>
 *FORMATION AGE N30 <PE. >
 *FORMATION NAME N30A <PINAL SCHIST >
 *SECOND FM AGE N35 <>
 *SECOND FM NAME N35A <>
 *IGNEOUS UNIT AGE N50 <>
 *IGNEOUS UNIT NAME N50A <>
 *SECOND IG. UNIT AGE N55 <>
 *SECOND IG. UNIT NAME N55A <>
 *GEOLOGY COMMENTS N85 <MINERALIZATION ASSOCIATED WITH TERTIARY INTENSION + VOLCANISM. 15.8-12.4 MY QUARTZ LATITE EXPOSED 1/2 MILE SOUTH OF MINE WORKINGS >

GENERAL COMMENTS

GENERAL COMMENTS GEN <>

REYMERT EXTENSION SILVER MINES Inc.

May 14, 1968

Mr. Jackson Diggs
606 So. Windsor Blvd.
Los Angeles 5, Calif.

THE CALIFORNIA DEPARTMENT OF MINERAL RESOURCES
MAKES NO REPRESENTATION AS TO THE ACCURACY
OF THE CONTENTS OF THESE DOCUMENTS.

Dear Sir,

Enclosed find copies of minutes of meetings on the Reymert.

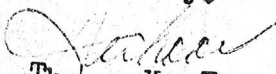
Note that you were elected to the board of directors. We felt that this was right and necessary. You are probably the largest stockholder plus the fact that most of the stockholders are in California and we feel they should have representation on the Board of Directors.

I sincerely hope that this is satisfactory to you, I do realize that it would be expensive for you to attend all board meetings, however I feel that by keeping in close contact with you this would not be necessary until such time as something very important comes up.

You will note that the board is meeting the 25th, at that time I expect that we will have two proposals of some kind but do not know at this time just what they will be.

Thank you.

Sincerely,


Theo. X. Terhaar
Secy.

Notes from Directors' Meeting

May 11, 1968

Officers elected:

Fred Wade	President
P. Coe	Vice President
T. X. Terhaar	Secretary-Treasurer

THE ARIZONA DEPARTMENT OF MINERAL RESOURCES
MAINTAINS THE ACCURACY OF THE CONTENTS OF THESE DOCUMENTS.

Reported that Corporation fees had been brought up through 1966 and postage and printing on Meeting Notice had been paid for by Mr. Wade. 1967 Corporation fees had been paid for by Mr. Terhaar.

New set of By-Laws to be drawn up for approval of the Board of Directors.

Mr. Tountas informs us that a group he represents will be making the Board an offer for operation of the mine within the next two weeks.

Mr. Smith also is working on a contract which he hopes to present to the Board at that time.

Directors will meet again on May 25th at 10 A.M.

4831 N. 11th St

REYMERT EXTENSION SILVER MINE

THE ARIZONA DEPARTMENT OF MINERAL RESOURCES
MAKES NO REPRESENTATION AS TO THE ACCURACY
OF THE CONTENTS OF THESE DOCUMENTS.

Special Stockholders Meeting

Date: May 11, 1968

Time: 1. P. M.

Place: Terhaar Accounting Service - 101 N. Brown, Scottsdale, Arizona

Meeting called to order by Fred Wade, V.P.

Introduction of all parties present.

Mr. Wade explained purpose of the meeting - to reactivate Reymert Extension Silver Mine and to fill vacancies on the Board of Directors.

Present at meeting and number of shares represented including proxies:

Wade	103,136	Tountas	17,850
Smith	495,900	Coe	50
Anderson (McGinnis)	23,000	Van Marel	50
Terhaar	100	Loulan	50
Cross	200		
		Total Shares	640,336 Quorum

Minutes of Directors' meeting of April 1, 1968 read and approved.

After some discussion it was decided that under the Articles of Incorporation the two remaining Directors would appoint persons to fill Director vacancies until the annual meeting of the Corporation which is the first Monday in October.

Mr. Wade asked for nominations and with this nominated Terhaar, Willoughby and Diggs.

Mr. Tountas nominated Coe, Van Marel and Loulan.

Mr. Wade and Mr. Smith then appointed the following to bring the Board of Directors to seven members:

- Terhaar - Diggs - Willoughby - Coe - Van Marel

Motion was made by Tountas to have the stockholders approve the appointments for the record, seconded by Smith. Vote was called for and was unanimous to ratify the action of the Board.

Wade called for any other business to be brought before the stockholders' meeting.

Mr. Tountas recommended that the Board of Directors draw up a set of By-Laws and that a statutory agent be appointed.

Motion made and seconded to adjourn the meeting - approved.

THEODORE X TERHAAR
Secretary

DIRECTORS MEETING

Date: June 17, 1968
Time: 1:00 P.M.

Place: 101 N. Brown - Scottsdale
Present: Wade - Smith - Terhaar - VanMarel - Coe
Absent: Willoughby - Diggs

THE ARIZONA DEPARTMENT OF MINERAL RESOURCES
MAKES NO REPRESENTATION AS TO THE ACCURACY
OF THE CONTENTS OF THESE DOCUMENTS.

Meeting called to order by President Wade

Clifton Smith gave resume of meeting with Inspiration Copper as follows:

1. \$1,200,000.00 was price asked - \$500,000.00 offered by Inspiration - Ultimate Agreed Price \$1,000,000.00
2. Payment of \$500.00 minimum royalty per month. Still unsettled is $7\frac{1}{2}\%$ pay value royalty v/s 10% net Smolton Royalty with limitation on credits. Either way will carry \$1.00 minimum per ton.
3. By end of second year they are to diamond drill 5,000 feet or pay \$50,000.00. Same for 3rd. and 4th. year.
4. End of 5th. year, pay option balance of \$1,000,000.00 or renegotiate for new lease and terms.
5. Inspiration to do all assessment work and pay taxes on mine.

President Wade then reported Inspiration sent crew to mine to check claims and did the assessment work up to date in the amount of \$1,400.00 and Wade filed the assessment claim this morning.

The \$1,400.00 assessment work will be charged back to us by Inspiration.

Inspiration to pay us advance royalty of \$3,000.00 and royalty payments to start in 6 months. Assessment work will be deducted from the \$3,000.00 after we figure what we need for operating expenses for 6 months. Balance of assessment work will be deducted from monthly royalties spread over a period of time.

Inspiration wants us to settle with Mr. Seel because they will not gamble on closing deal unless they are certain there will be no litigation from other sources.

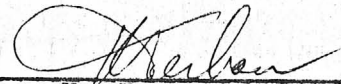
Almeria
Hugh Almeria
Mr McDonald
602
4732411

Wade reported on discussion with Mr. Seel

Motion by Mr. Van Marel seconded by Coe that Wade, Smith and Terhaar be appointed to deal with Mr. Seel and be given full authority to arrive at and make settlement with Mr. Seel according to their best judgment.

Motion carried.

Motion to Adjourn - carried.



Theo. X. Terhaar - Sec'y.

THE ARIZONA DEPARTMENT OF MINERAL RESOURCES
MAKES NO REPRESENTATION AS TO THE ACCURACY
OF THE CONTENTS OF THESE DOCUMENTS.

REYMERT MINE

No Not Reproduce

PINAL COUNTY
MINERAL HILL DIST.

Conference with August Kaempf, Superior 10/21/64

August Kaempf, who has been representing Norman DeVaux (who owned 53% of the stock), said that DeVaux died early in September. He also stated that a conference with Mr. Walker, geologist for Phelps Dodge revealed that the test hole at the Reymert was now down 2200 feet and that the hole so far had apparently not shown much. During the late summer the project had been down for several weeks after reaching 1850 feet, because of a lost string of tools or bit. The hole was finally wedged past the tools. It is planned to change the hole inclination somewhat by further wedging, according to Kaempf. Sprague-Henwood Drilling Co., Salt Lake City, is still on the job. The core is now about 3/4-inch.

MEMO LAS 10/21/64

DEPARTMENT OF MINERAL RESOURCES

STATE OF ARIZONA

FIELD ENGINEERS REPORT

Mine Reymert Mine

Date March 25, 1964

District Mineral Hill District, Pinal Co.

Engineer Lewis A. Smith

Subject: Conference with August Kaempf at Superior.

Mr. Kaempf reported that Sprague-Henwood Drilling Company, Salt Lake City, Utah, are diamond drilling a test hole for Phelps Dodge Corp. under an option agreement with Norman DeVaux, owner. Mr. Kaempf is temporarily representing Mr. DeVaux, who is now in Florida. "Pete" Walker is the Phelps Dodge geologist in charge and Elmer Winters is the drill boss. The hole, according to Kaempf, will possibly be sunk as much as 3000 feet, and is on about a 56 degree incline. The core is approximately 3 inches in diameter. The hole was temporarily halted at 200 feet, because of bit trouble, but it is calculated to resume by Friday. At 200 feet the hole encountered a highly brecciated white quartz zone that has proven to be very difficult to drill. Walker, according to Kaempf, said that they were exploring for copper. No one was on the ground so no visit was made.

The earlier ore shipments were composed of manganiferous silver ore that was sent to Magma and Hayden smelters for flux. During the 1940's James Todd, Phoenix, lessee, shipped several thousand tons of siliceous silver ore to International Smelter, Miami, as flux. This latter ore averaged about 10 oz. silver. More recent sampling in mid-1962, showed about this grade and the sampling parties did not consider this sufficient and withdrew. Mr. DeVaux thinks that there is a chance for deep copper mineralization.

TODD, JAS. (LESSEE)

SMITH, W. C., Mgr.
HOLEMAN, C. L., Supt.

MINE - REYMERT MINE - 13½ miles west of Superior.

NAME OF MINE: REYMERT:

COUNTY: PINAL E

DISTRICT: _____

METALS: AG

OPERATOR AND ADDRESS:

MINE STATUS

DATE:	OPERATOR AND ADDRESS:	DATE:	MINE STATUS
5/1/44	Walter Smith, Coolidge	5/1/44	Shipping
11/44	W. J. Forbach, Superior	11/44	Operations Planned
2/45	Norman DeVaux & Bennett, Globe	2/45	Repairing road
		3/15/45	Reconditioning main workings.
		5/46	Idle
		11/46	Shipping
3/47	Frank Carrow, Globe	3/47	Shipping

DEPARTMENT OF MINERAL RESOURCES

News Items

Date 5/22

Mine REYMURT

Location 8 MI. S OF SUPERIOR

Owner W.J. FORBACH

Address SUPERIOR

LEASING FROM

Operating Co. REYMURT MINING CO.

Address

Pres. RUMORED THAT MIAMI

Genl. Mgr. COPPER CO. HAS OPTIONED

Mine Supt. BUT BUT DOUBTFUL IF

Mill Supt. THEY EXERCISE IT.

Principal Metals Ag

Men Employed 50

Production Rate SHIPPING 400 TONS A WEEK

Mill, Type & Capacity 1/2 TO MAGMA
1/2 TO INTERNATIONAL

Power, Amt. & Type

Signed JFC

(Over)

Simon, M Co.

DEPARTMENT OF MINERAL RESOURCES

News Items

Date 5/7/46

Mine Reymurt

Location six-miles S of Superior

Owner

Address

Operating Co.

Address

Pres.

Genl. Mgr. Frank Corrow

Mine Supt.

Mill Supt.

Principal Metals Ag 12-15%

Men Employed closed 2 weeks ago
because of price of Ag

Production Rate

Mill, Type & Capacity

Power, Amt. & Type

Signed

(Over)

DEPARTMENT OF MINERAL RESOURCES
STATE OF ARIZONA
FIELD ENGINEERS REPORT

Mine REYMERT MINE

Date June 11th, 1942

District

Engineer FRED H. PERKINS

Subject:

Reymert Lease

Jas. Todd, Lessee, 66 N. County Club Drive, Phoenix.
W. C. Smith, Manager, Coolidge, Arizona.
C. L. Holeman, Supt., P. O. Box 783, Superior, Arizona.

P. O. Box 783, Superior, Arizona

Reymert Mine

Located $13\frac{1}{2}$ miles West of Superior

1941 Production Silver only. From June 1, 1941 to January 1,
1942 produced 6855 tons.

Average value 10 oz. silver

Average of 33 men employed

1942 Production for January, February, and March
1675 tons and approximately 2500 April and May,
to June 10, approximately 2500 tons.

Average men employed for above period-20.

Average value of ore 20 ozs.

Average width of vein 4 feet.

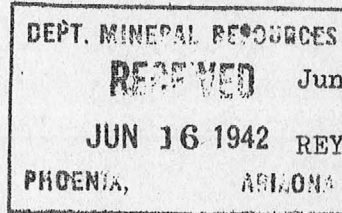
They have a contract with Smelter at Miami for
1000 tons per month but because of the silica
content in the ore will take all they can get
out. Silica runs about 65%.

This mine is mined through a 300 ft. incline shaft,
about 80 degrees. There is 1025 ft. of drift.



SURVEY OF OPERATING MINE

By: Fred H. Perkins



RD

Reymert Lease

Jas. Todd, Lessee, 66 N. Country Club Drive, *Phoenix*
W. C. Smith, Manager, Coolidge, Arizona
C. L. Holeman, Supt. P. O. Box 783, Superior, Arizona

P. O. Box 783, Superior, Arizona

Reymert Mine

Located $13\frac{1}{2}$ miles West of Superior

1941 Production Silver only. From June 1, 1941 to
January 1, 1942 produced 6855 tons.

Average value 10 oz. silver

Average of 33 men employed

1942 Production for January, February, and March
1675 tons and approximately 2500 April and May,
to June 10, approximately 2500 tons.

Average men employed for above period 20.

Average value of ore 20 ozs.

Average width of vein 4 feet.

They have a contract with Smelter at Miami for
1000 tons per month but because of the silica
content in the ore will take all they can get
out. Silica runs about 65%.

This mine is mined through a 300 ft. incline
shaft, about 80 degrees. There is 1025 ft. of
drift.

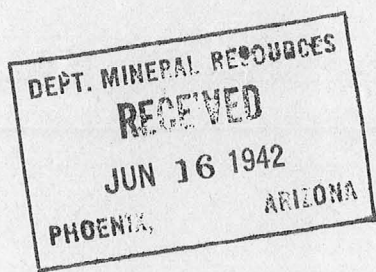
TAKEN FROM THE REPORT OF THE GOVERNOR OF ARIZONA 1893 pp 28-29

Manganese ores occur abundantly. Such material will some day play an important part
in the reduction of certain classes of silver ores which abound in Arizona. Notable
instances of their occurrence in the mines of silver ores are the Lucky Cuss, of
Tombstone, and the Reymert, northwest of Florence, and other contain manganese in
workable quantities.

Partial

SURVEY ON OPERATING MINE

By: Fred H. Perkins



June 11, 1942

TODD LEASE on REYMENT MINE

Problems:

If they have any problems Mr. Holeman would not acknowledge it.

Priorities O.K. Granted a 0 quota.

No labor troubles or scarcity of labor.

No mining problem, so they claim, though I noticed they had 2 compressors; one Diesel and one gasoline driven.

Reymert Mine-copy of Summary with Report

The Reymert property is located near Superior, Arizona. It comprises 7 patented mining claims laid out with parallel endlines on the outcrop of the Continental or Reymert ledge.

The chain of ownership is unbroken and titles should be clear.

Topography and transportation introduce no problems, but water requirements above that pumped from the mine involves establishment of pipe lines and pumping plants. The Alaska is said to make 50 gallons per minute.

The Reymert property has produced about 80,000 tons of ore to date, having an aggregate value of approximately \$866,905.

The ore contains about 20% lime and 42% silica. Metallurgically, it is refractory; it requires roasting and cyanidation for recovery of the silver values.

The vein is a very prominent fissure vein composed of the minerals calcite, quartz, barite, Mn oxides, Fe oxides, and small amounts of fluorite and some unknown silver mineral. The vein strikes across the schist country-rock nearly at right angles to the schistosity. Where the vein crosses diorite intrusive or encounters diorite in depth, it tends to narrow, split up, and apparently becomes low grade. Faulting has resulted in a strike/slip of about 280 feet to the left along the vein. Cross-faults are of little importance, and offsets on them are to the right.

The mineralization occurred in three main periods. First, fissure filling with black calcite, second reopening and fissure filling with quartz, third reopening and fissure filling with quartz and barite and the introduction of the main silver values. The nature and texture of the vein filling indicate it to be of epithermal type.

Information is not available as to whether enrichment took place or not. The values become low with depth wherever information is available.

Preliminary sampling over the main part of the vein indicates the following ore reserves:
29,817 tons of probable ore of 11.1 oz Ag grade
71,786 tons of possible ore of 11.91 oz Ag grade
92,918 tons of possible ore of 8.15 oz Ag grade;
the latter being less adequately sampled than previously indicated possible ore.

If the property is considered attractive enough for further work, it is recommended that the indicated ore blocks be thoroughly sampled.

from COPPER REPORT NO. [REDACTED] DECEMBER 23, 1942, by EARL F. [REDACTED] HASTINGS for
Copper Branch, War Production Board.

17.

REYBERT MINE. W. C. Smith, Lessee, Coolidge, Arizona.

This property is located about 10 miles from Superior. The principal value is silver but the production is important for the 65% SiO_2 content. The vein is about 4 feet wide and the composition persistent.

A production rate of 1200 tons per month was maintained for the first half of 1942. The entire production was shipped to the Miami smelter with whom a 1000 ton per month contract was executed.

Like the Hardy and Ash Peak mines the ore is not a copper bearing ore, but is nevertheless of utmost importance in copper production.

from COPPER REPORT NO. 2, DECEMBER 23, 1942, by Earl F. Hastings, for
COPPER BRANCH, WAR PRODUCTION BOARD.

GEOLOGY: The deposit lies in a composite-shear-fissure zone cutting Precambrian Pinal schists that include thin bedded sericitic-quartz wider bedded quartz-mica schists and limited amphibolitic varieties. The schist bedding locally has N-S strike with local variations toward the NE. They dip steeply or are about vertical. (East of the mineralized zone the schists are intimately sheeted (1 inch to 5 inches between the sheets) This sheeting trends east to the Northeast and is clear cut, could be confused with schistosity in places). The mineralized zone ranges from 20 to 100 feet in width and trends about N 10-20 degrees west and dips from 75 deg E to vertical. The main production was obtained from comparatively narrow oblong shoots ranging from 3-20 feet in width and from a few tens of feet to several hundred feet in length. The ore was mined through the 410-foot Alaska shaft (North) and the 400-foot (South) shaft. These are approximately 2000 feet apart. The mineralized zone has been estimated to be 5400 feet long. On the north end, as far as could be observed, the zone terminates in a sharp and straight gully that probably follows a fault. On the south end the zone narrows and the ore tends to horsetail. The ore shoots lie in portions of the mineralized zone that lie along the two walls and are separated by comparatively low-grade mineralization or barren but mineralized schist. Ore has been reported to be present down to the 400-foot shaft at the Alaska. Several thousand feet of exploratory lateral work was done including a few tunnels, the longest open one (over 300 feet) extending south from the collar of the "South" shaft. Several workings and an open cut lie between the two shafts. The ore shoots appear to have been controlled by transverse faults and narrowing and swelling of the mineralized zone. Near the Alaska shaft a nearly vertical fault and a flat dipping fault cross the mineralized zone. The flat fault dips NW and N border of the stopes, north of the shaft appear to follow it downward. The nearly vertical fault is, also, mineralized and the stopes south of the shaft taper off to the south from it. The projected faults could have intersected, but such a contact is now removed by erosion. At the "South" shaft the vein width of the zone is 4-12 feet, 1000 feet south of the "South" shaft the zone narrowed and appears to "horsetail" somewhat, with wider barren zones in between. Where observed the mineralized zone is composed of bands of barite, manganiferous calcite, dense white quartz, siderite, wad, psilomelane (very local) sparse pyrolusite, spongy, crustified quartz and iron oxides. The close banding may be controlled by shearing but this was relatively open permitting crystal development. The barite bands range up to 6 inches wide and are composed of platy crystals. Quartz in some bands is dense, reddish and very fine grained but in others is spongy, crustified in combs, or in loose aggregates. The manganiferous calcites and siderite are crystalline and in places widen into lenses. The silver is said to be most prevalent in the ferruginous and manganiferous quartz or calcite. The silver is reportedly present as cerargyrite and argentite. No other appreciable metallic minerals are reported. The U.S. Bureau of Mines RI 4097 p 7 (1947) reports fluorite, also. They also report that dikes of basic rocks and rhyolite have intruded the schists in the area. The width of the mineral bands varies considerably from place to place.

The U. S. Bureau of Mines RI 4097 (1947) p11 shows an analysis of the ore (15 ton sample): Mn-4.75%; Cu-0.05%; Pb-0.80%; Zn-0.70%; Fe-4.95%; BaO-8.2%; CaO-8.7%; Insol-60.8% (SiO₂-51.3%); S-1.25%; P-0.70%; MgO-0.3%; with 0.005 oz Au and 16.35 Ag per ton. The lead and zinc is probably oxidized and not recognizable.

Metallurgical results are shown in RI 4097.

References:- U. S. Bureau of Mines RI 4097 (1947) pp 3,5,7,10 and 13.

" " " " " " IC 7990 (1961) pp 143, 144.

Fred H. Perkins, Arizona Department of Mineral Resources June 11, 1942.

DEPARTMENT OF MINERAL RESOURCES

STATE OF ARIZONA
FIELD ENGINEERS REPORT

Mine REYMERT MINE Date 2/17/65
District MINERAL HILL DIST. PINAL COUNTY Engineer Lewis A. Smith
Subject: Mine Visit and Conference with August Kaempf, Neil B. McGinnis 2/17/65.

LOCATION: Secs. 15, 22, 23, 26 and 27, T2S, R11E.

ACCESS: Travel 5.2 miles from Superior via Hwy 60-70, thence south on a graded dirt road for 1 3/4 - 2 miles to old camp.

OWNERS: Reymert Mining Co. (51 percent controlled by DeVaux Estate).

AGENT: Neil B. McGinnis, Secretary and Treasurer, McGinnis, Neil B., Equipment Co., 500 S. Central Ave., Phoenix, Arizona (PH 258-5391).

LESSEE: Phelps Dodge Corp., Douglas, Arizona (P.O. Box 872).

CONSULTANT for Reymert Mining Co., Charles P. Field, 3051 Sagehen Court, Indian Ridge Terrace, Tucson, Arizona.

PRODUCTION: 175,000 tons of ore running 15.5 ounces of silver to the ton with 1 1/2 - 4 percent Mn. Most of this was shipped to smelters at Superior and Miami, about 10,000 tons being classed as manganiferous ore averaging 2.5 percent Mn. According to U.S. Bur. of Mines, RI 4097, (July 1947) p 13-14, the Reymert produced 2,284,000 ounces of silver up to 1945. A very small production was made since.

HISTORY: The Reymert was discovered in 1885 by John Reymert. Production began shortly afterward and continued, intermittently up to 1950. Shortly after 1886 the Reymert was controlled by a Mr. Van Dyke, of Milwaukee, Wisc., and operated continuously until 1891. During part of this interval some of the ore was treated by chloridization and pan-amalgamation. In 1912, Gunn Thompson interests obtained a purchase-option and during 1912-1913 the 410-foot Alaska shaft was sunk, and they continued exploration until 1919-1920. During this period an affiliate of Thompson's, Lincoln Issues Co., and Magma Copper Company put down several drill holes.

In 1925 W. Forbach et al leased the property, and intermittently operated the mine until the middle of 1944, when Norman De Vaux (who died in 1964) acquired 51 percent of the stock in the Reymert Extension Mining Company, Inc.

In early 1964, Phelps Dodge Corporation took a lease-option on the property and since then has drilled two diamond holes. The first was drilled at an incline angle of 56 deg. E and reached a little over 2200 feet. The second was completed in February 1965 and reached 1882 feet and is vertical. Sprague-Henwood Drilling Co. of Salt Lake City, Utah, did the drilling. The first hole was figured to reach 3000 feet but tool trouble caused its abandonment. Both holes were stopped in diabase.

PLANS: According to Neil McGinnis, Phelps Dodge plans to sink a third hole to 3000, or more feet. This time they plan to drill the first 2000 feet by churn drill and case the hole. Then they will proceed deeper by diamond drill.

RESERVES: G. M. Colvocoresses estimated (1945) reserves of 300,000 to 500,000 tons that would contain 8-10 oz. silver per ton and 3-5 percent Mn.

DEPARTMENT OF MINERAL RESOURCES
STATE OF ARIZONA
FIELD ENGINEERS REPORT

Mine REYMERT MINE

Date June 11th, 1942

District

Engineer FRED H. PERKINS

Subject:

Reymert Lease

Jas. Todd, Lessee, 66 N. County Club Drive, Phoenix.
W. C. Smith, Manager, Coolidge, Arizona.
C. L. Holeman, Supt., P. O. Box 783, Superior, Arizona.

P. O. Box 783, Superior, Arizona

Reymert Mine

Located $13\frac{1}{2}$ miles West of Superior

1941 Production Silver only. From June 1, 1941 to January 1,
1942 produced 6855 tons.

Average value 10 oz. silver

Average of 33 men employed

1942 Production for January, February, and March
1675 tons and approximately 2500 April and May,
to June 10, approximately 2500 tons.

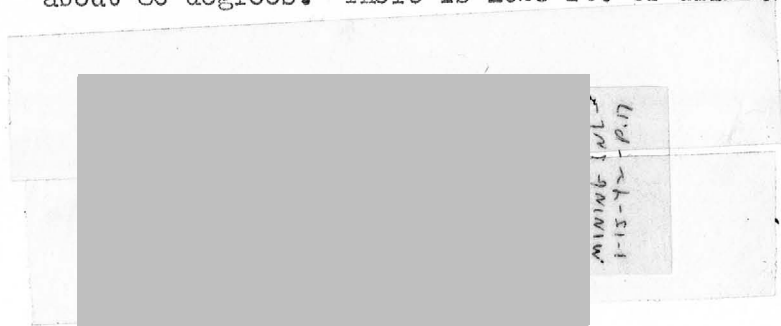
Average men employed for above period-20.

Average value of ore 20 ozs.

Average width of vein 4 feet.

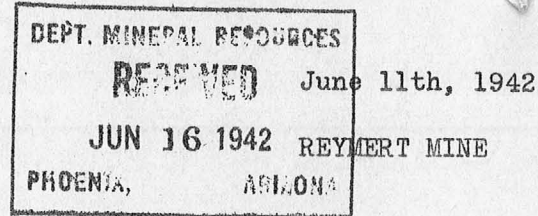
They have a contract with Smelter at Miami for
1000 tons per month but because of the silica
content in the ore will take all they can get
out. Silica runs about 65%.

This mine is mined through a 300 ft. incline shaft,
about 80 degrees. There is 1025 ft. of drift.



SURVEY OF OPERATING MINE

By: Fred H. Perkins



Reymert Lease

Jas. Todd, Lessee, 66 N. Country Club Drive, Phoenix
W. C. Smith, Manager, Coolidge, Arizona
C. L. Holeman, Supt. P. O. Box 783, Superior, Arizona
P. O. Box 783, Superior, Arizona

Reymert Mine

Located $13\frac{1}{2}$ miles West of Superior

1941 Production Silver only. From June 1, 1941 to January 1, 1942 produced 6855 tons.

Average value 10 oz. silver

Average of 33 men employed

1942 Production for January, February, and March 1675 tons and approximately 2500 April and May, to June 10, approximately 2500 tons.

Average men employed for above period 20.

Average value of ore 20 ozs.

Average width of vein 4 feet.

They have a contract with Smelter at Miami for 1000 tons per month but because of the silica content in the ore will take all they can get out. Silica runs about 65%.

This mine is mined through a 300 ft. incline shaft, about 80 degrees. There is 1025 ft. of drift.

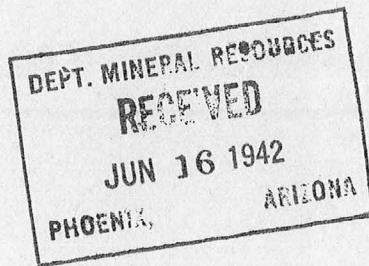
TAKEN FROM THE REPORT OF THE GOVERNOR OF ARIZONA 1893 pp 28-29

Manganese ores occur abundantly. Such material will some day play an important part in the reduction of certain classes of silver ores which abound in Arizona. Notable instances of their recurrence in the mines of silver ores are the Lucky Cuss, of Tombstone, and the Reymert, northwest of Florence, and other contain manganese in workable quantities.

Partial

SURVEY ON OPERATING MINE

By: Fred H. Perkins



June 11, 1942

TODD LEASE on REYMENT MINE

Problems:

If they have any problems Mr. Holeman would not acknowledge it.

Priorities O.K. Granted a 0 quota.

No labor troubles or scarcity of labor.

No mining problem, so they claim, though I noticed they had 2 compressors; one Diesel and one gasoline driven.

STATE OF ARIZONA
DEPARTMENT OF MINERAL RESOURCES
MINERAL BUILDING, FAIRGROUNDS
PHOENIX, ARIZONA 85007



May 2, 1966

Mr. Ralph G. Applegate
624 Post Street
San Francisco, Calif.

Dear Sir:

The last activity at the Reymert Mine was in February, 1965, when Phelps Dodge Corporation completed drilling two deep holes on the Reymert. The holes did not give satisfactory results.

One hole (1) was sunk 2,200 feet, but did not reach the mineralized zone, since attempts to wedge the hole in that direction were unsuccessful. The second hole (2) reached 1,882 feet, and was on the opposite side of the mineralized zone. Here, also, attempts to wedge the hole over to the mineralized area failed. Neither hole had mineralization of much consequence. Since then the mine has not been active and much equipment was moved off, for safe keeping.

Mr. Neil B. McGinnis, Secretary & Treasurer, is still active, but stated that he had not received your last letter and that he had corresponded with you several times before.

Mr. Norman de Vaux, who controlled the property, died about a year ago in Florida.

Hoping this will help, I remain,

Very truly yours

Lewis A. Smith
Field Engineer

LAS:lm

C
O
P
Y

304xxx

March 14, 1944

File No. BDD

War Price and Rationing Board
No. 81.7.1
137 North Second Avenue
Phoenix, Arizona

Gentlemen:

Mrs. Rae Tod of the Reymert Lease is shipping fluxing ore to Miami smelter from this serialized mine. Mrs. Tod is supervising this operation during Major Tod's absence as C.O. of the Gunnery Field at Ajo. It is essential that she make two round trips per month to properly conduct this work.

This department recommends issuance of necessary gas ration to carry on war essential work.

Yours very truly,

George A. Ballam
Assistant to the Director

GAB:LP

DEPARTMENT OF MINERAL RESOURCES

REPORT TO OPA ON ACTIVE MINING PROJECT

Date..... February 20, 1945.....

Name of Mine..... Reymart.....

Owner or Operator..... Reymart Lease, a Co-partnership
Norman DeVaux, Dominion Hotel, Globe;

Address..... or Box 21, Superior.....

Filing Information

File System.....

File No.....

This chart to be used for gallons of gasoline required per month.

Mine Location..... About 10 miles south of Superior, Arizona.....

PRESENT OPERATIONS: (check X)

Production..........; Development..........; Financing.....; Sale of mine.....;

Experimental (sampling)..........; Owner's occasional trip..........;

Other (specify).....

PRODUCTION: Past and Future.

Tons

Approx. tons last 3 months..... Idle.....

Approx. present rate per 3 months..... 1,000.....

Anticipated rate next 3 months..... 1,500.....

If in distant future check (X) here.....

EQUIPMENT OPERATED:

Type	Quantity or Horse Power	Miles or Hours Per Month	Gallons Required Per Month
Personal Cars
2x Light or Service Trucks	150	1,000 mi.	60
Ore Hauling Trucks
Compressors	100	200 hrs.	700
Caterpillar bulldozer	65	100 "	200
Other Mine or Mill Eqpt.
Hoist & pump	150	225 "	550
PRODUCT PRODUCED OR CONTEMPLATED: Name metals or minerals.			<u>1,510</u>

Flux for copper smelting. Mn. & Ag

REMARKS:

Recommend 1500 gallons per month. An established going concern.

ARIZONA DEPARTMENT OF MINERAL RESOURCES

By..... *S. original*
S. original
Field Engineer

25 11E

14

REYMERT MINE
PINAL Co., ARIZ

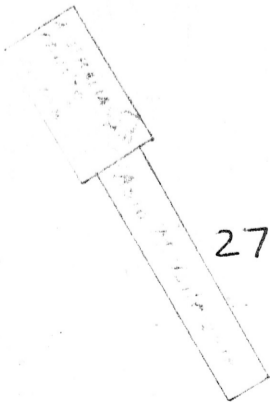
15

2.2

23



Pinal Co. Arizona



27

26

7 PATS - MS 2878
108,411 A.

